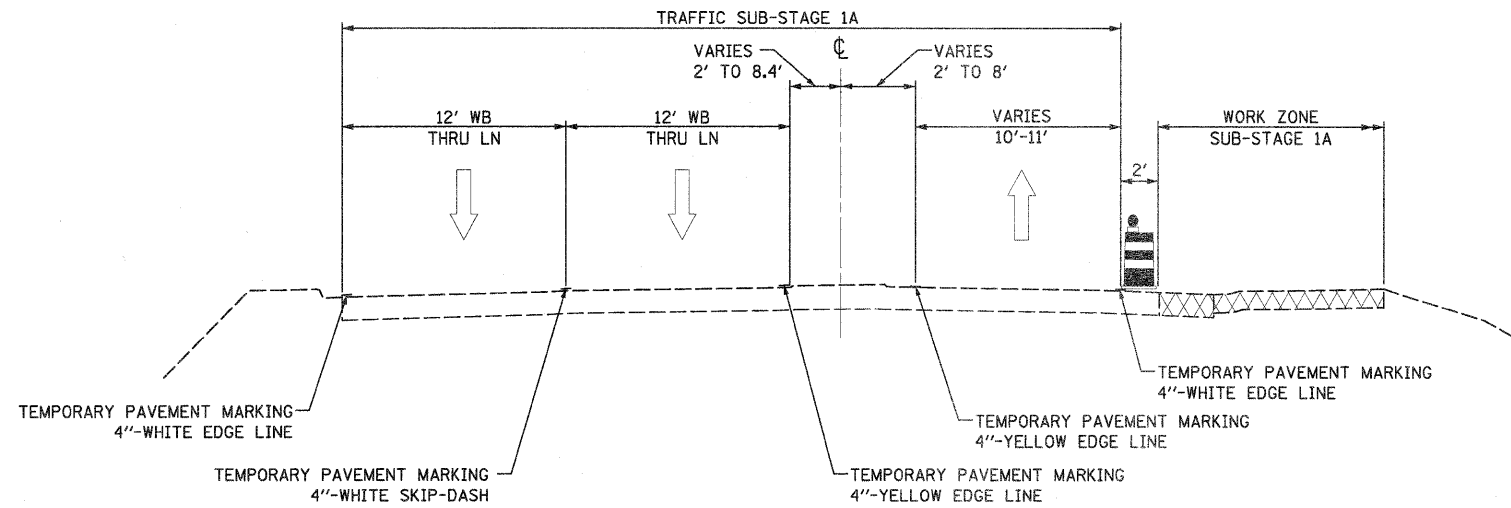
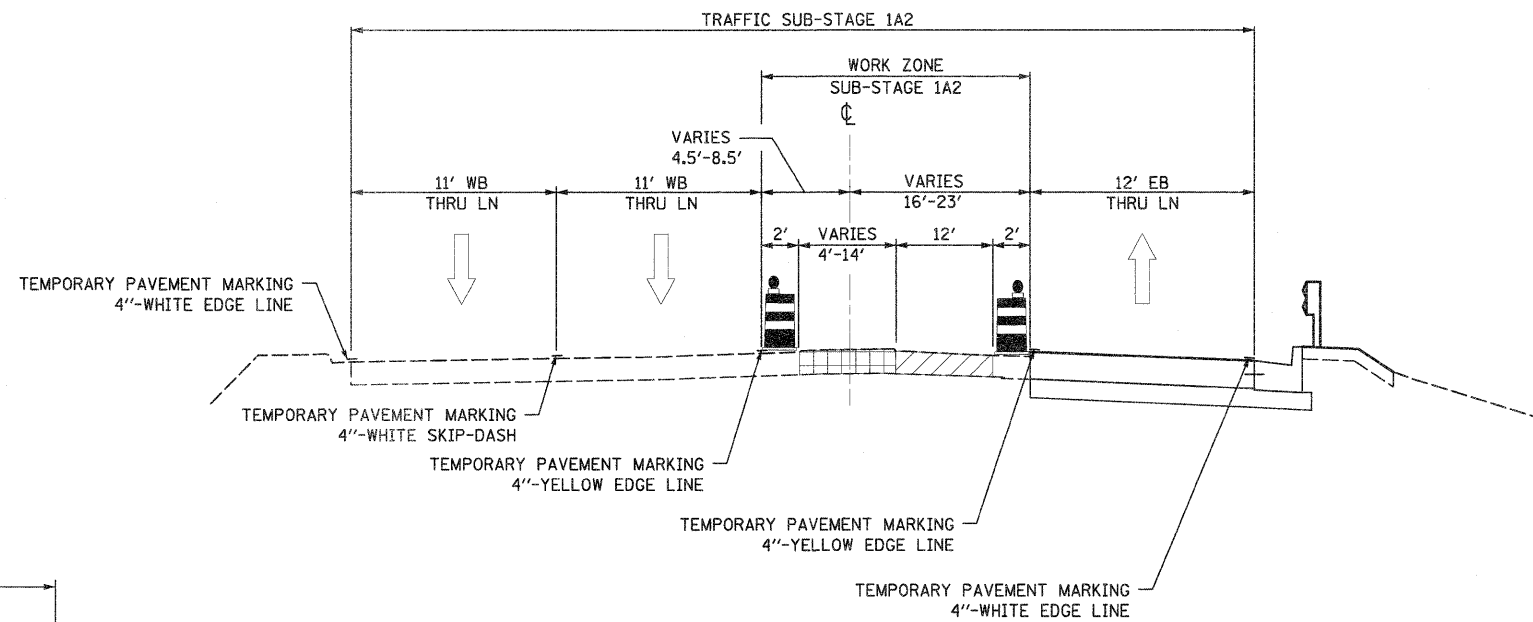


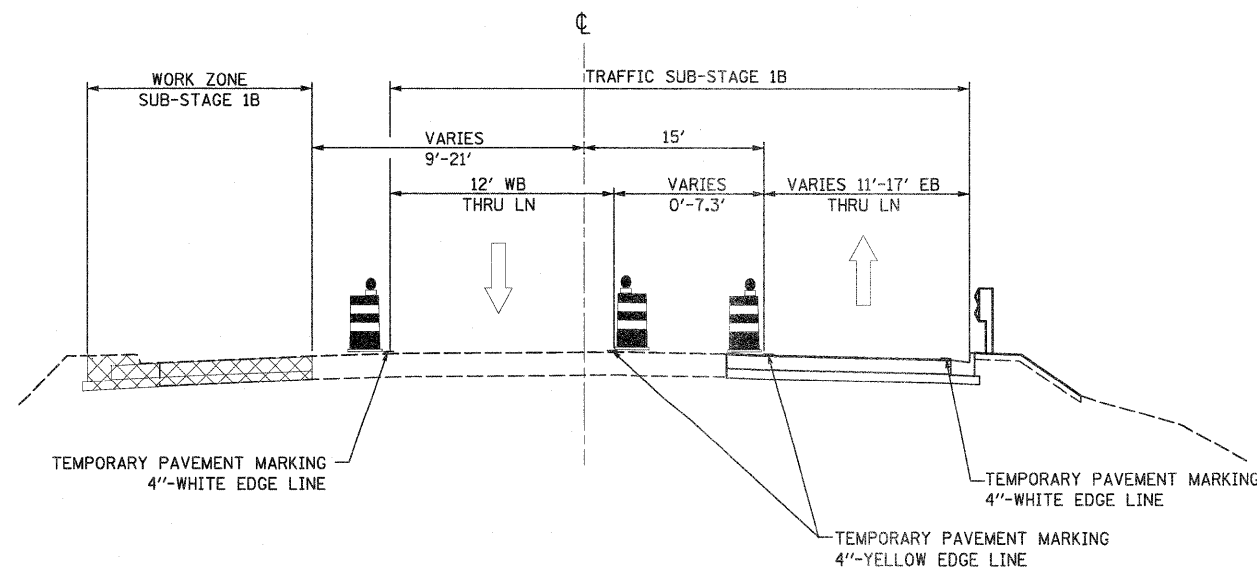
HARRISON AVENUE
STA. 37+00.00 - STA. 41+39.40



HARRISON AVENUE
STA. 37+95.55 - STA. 41+30.00



HARRISON AVENUE
STA. 37+95.55 - STA. 41+12.64



FILE NAME = D201500-sh-t-staging02_tjpc0107.dgn	USER NAME = TERRA	DESIGNED - BCB	REVISED -	STATE OF ILLINOIS DEPARTMENT OF TRANSPORTATION	MAINTENANCE OF TRAFFIC STAGE I TYPICAL SECTIONS	F.A. RTE. 742	SECTION 34R	COUNTY WINNEBAGO	TOTAL SHEETS 491	SHEET NO. 97	
PLT SCALE = 10,0000' / IN.	CHECKED - DPA	REVISIED -	REVISIED -			CONTRACT NO. 64515					
PLDT DATE = 1/16/2012	DATE - 01/17/12	REVISIED -	REVISIED -			ILLINOIS FED. AID PROJECT					
						SCALE:	SHEET NO. OF SHEETS	STA. TO STA.			