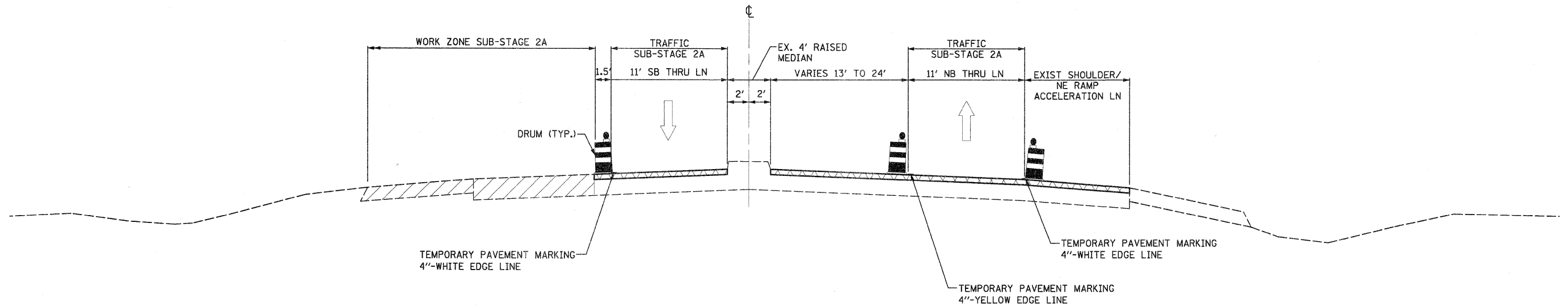
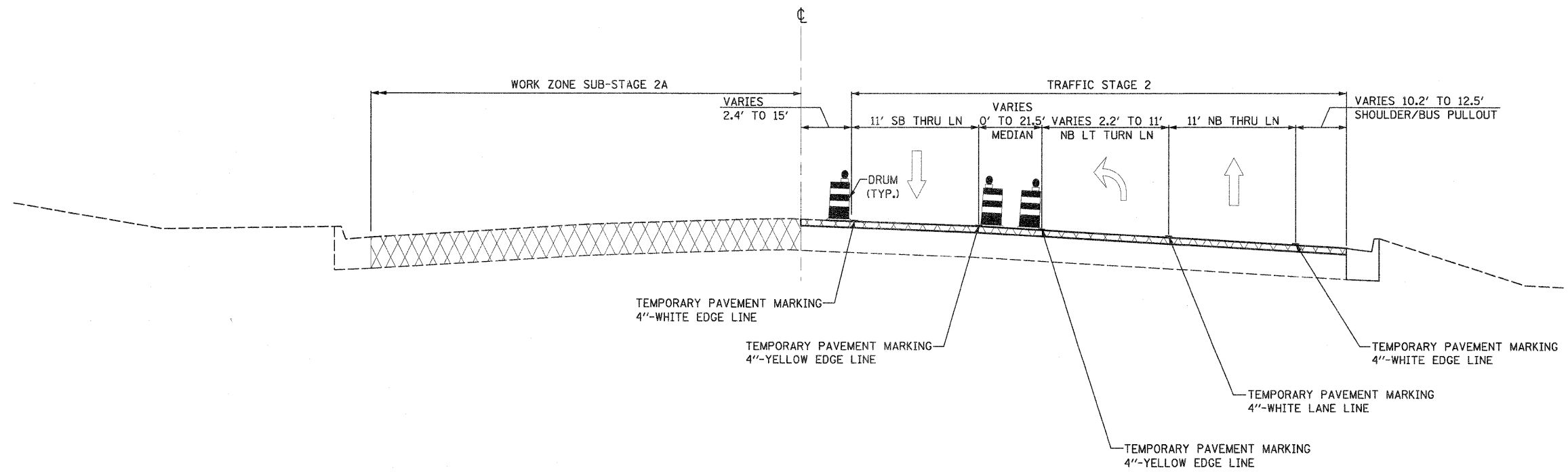


IL ROUTE 2  
 STA. 253+78.00 - STA. 262+95.00



IL ROUTE 2  
 STA. 266+34.11 - STA. 269+20.00



FILE NAME = 0201500-sh-t-staging02_typical10.dgn	USER NAME = TERRA	DESIGNED - BCB	REVISED -	<b>STATE OF ILLINOIS DEPARTMENT OF TRANSPORTATION</b>	<b>MAINTENANCE OF TRAFFIC STAGE II TYPICAL SECTIONS</b>			F.A. RTE. 742	SECTION 34R	COUNTY WINNEBAGO	TOTAL SHEETS 491	SHEET NO. 100
	PLOT SCALE = 10.0000' / IN.	DRAWN - CVM	REVISED -		SCALE:	SHEET NO.	OF	SHEETS	STA.	TO STA.	CONTRACT NO. 64515	
	PLOT DATE = 1/16/2012	CHECKED - DPA	REVISED -								ILLINOIS FED. AID PROJECT	
		DATE - 01/17/12	REVISED -									