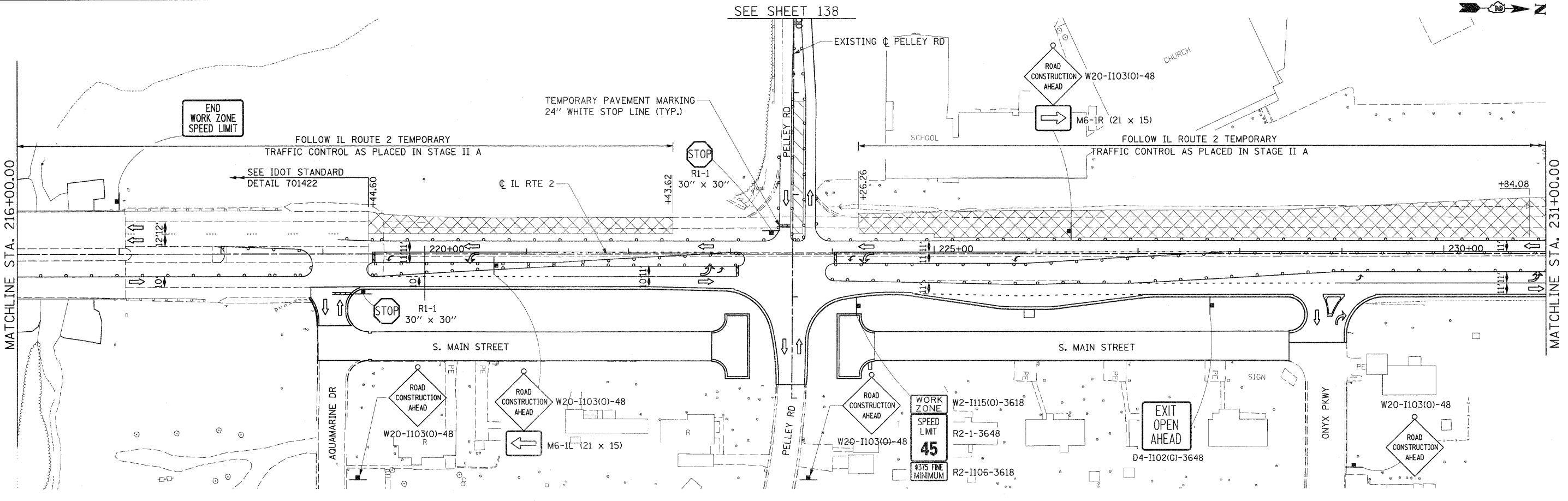
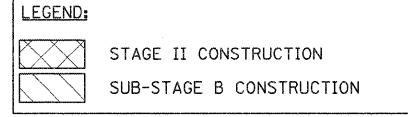
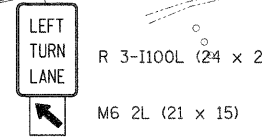
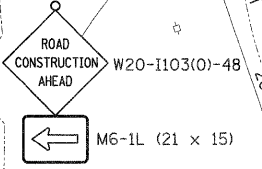
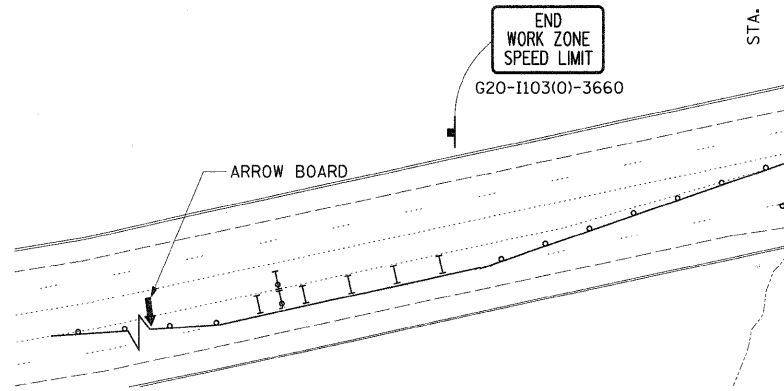
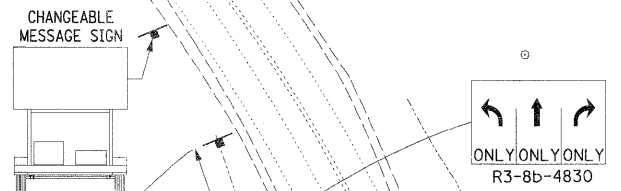
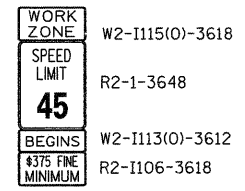
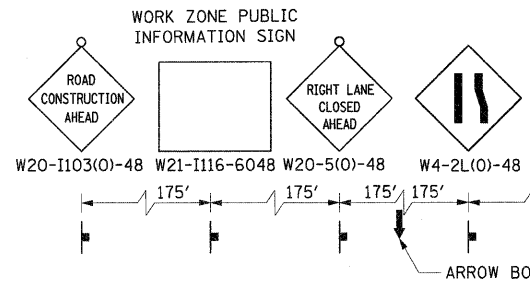
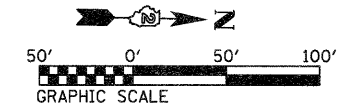


THE NORTHBOUND AND SOUTHBOUND IL RTE 2 LANE CLOSURES FROM THE SOUTH PROJECT LIMIT TO STA. 263+00 SHALL BE PAID ON A LUMP SUM BASIS AS TRAFFIC CONTROL AND PROTECTION, STANDARD 701422.

NOTE:
PLACE MESSAGE BOARD FROM BEGINNING OF STAGE 2B AND KEEP IN PLACE FOR 2 WEEKS



FILE NAME = D201500-sht-staging27.dgn

USER NAME = TERRA

PLOT SCALE = 50.0000' / IN.

PLOT DATE = 1/16/2012

DESIGNED - KJC
DRAWN - CBC
CHECKED - DPA
DATE - 01/17/12

REVISED -
REVISED -
REVISED -
REVISED -

**STATE OF ILLINOIS
DEPARTMENT OF TRANSPORTATION**

**MAINTENANCE OF TRAFFIC PLAN
STAGE II AND SUB-STAGE B**

SCALE: 1" = 50' SHEET NO. 1 OF 9 SHEETS STA. TO STA. 231+00.00

F.A. RTE.	SECTION	COUNTY	TOTAL SHEETS	SHEET NO.
742	34R	WINNEBAGO	491	139

CONTRACT NO. 64515
ILLINOIS FED. AID PROJECT