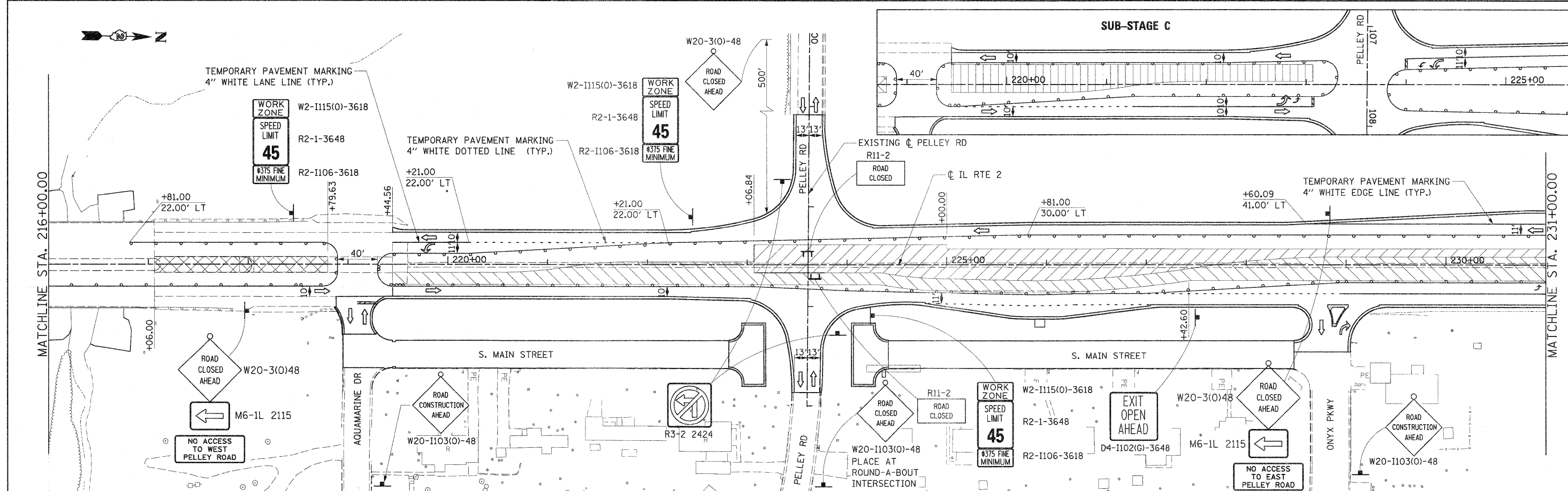
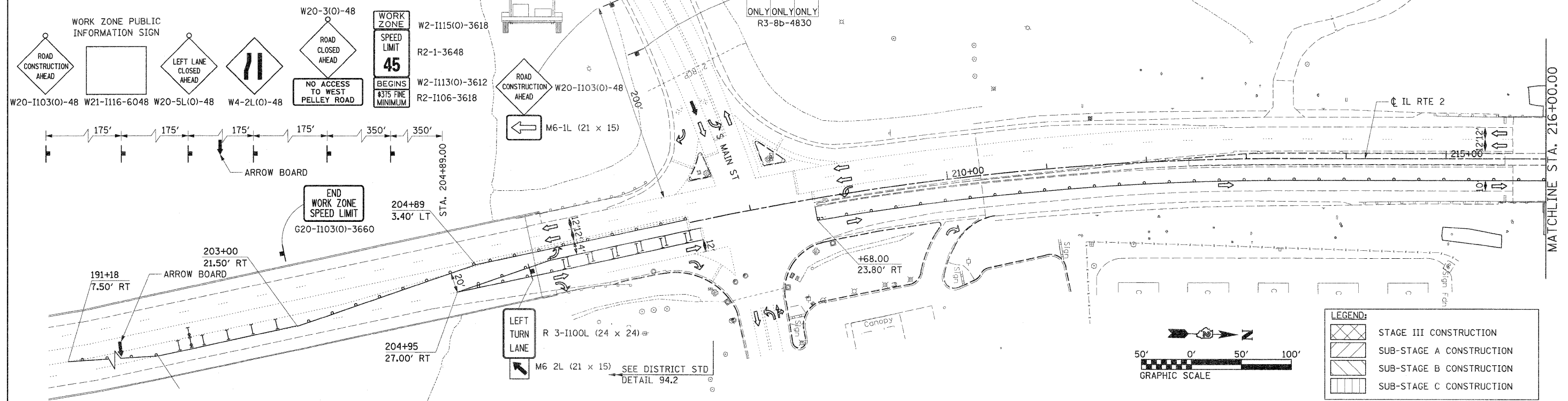


**NOTE:**  
THE NORTHBOUND AND SOUTHBOUND IL 2 LANE CLOSURES FROM THE SOUTH PROJECT LIMIT TO STA. 263+00 SHALL BE PAID ON A LUMP SUM BASIS FOR ALL CONSTRUCTION STAGES AS TRAFFIC CONTROL AND PROTECTION, STANDARD 701422

**NOTE:**  
PLACE MESSAGE BOARD FROM BEGINNING OF STAGE 2B AND KEEP IN PLACE FOR 2 WEEKS



FILE NAME = D281528-eh-t-staging35.dgn	USER NAME = TERRA	DESIGNED - BCB	REVISED -	<b>STATE OF ILLINOIS DEPARTMENT OF TRANSPORTATION</b>	<b>MAINTENANCE OF TRAFFIC PLAN STAGE III</b>			F.A. RTE. 742	SECTION 34R	COUNTY WINNEBAGO	TOTAL SHEETS 491	SHEET NO. 148
PLOT SCALE = 50.0000' / IN.					SCALE: 1" = 50'			SHEET NO. 1 OF 7 SHEETS STA. TO STA. 231+00.00			CONTRACT NO. 64515	
PLOT DATE = 1/16/2012					DATE - 01/17/12			ILLINOIS FED. AID PROJECT				
DRAWN - CBC					CHECKED - DPA							