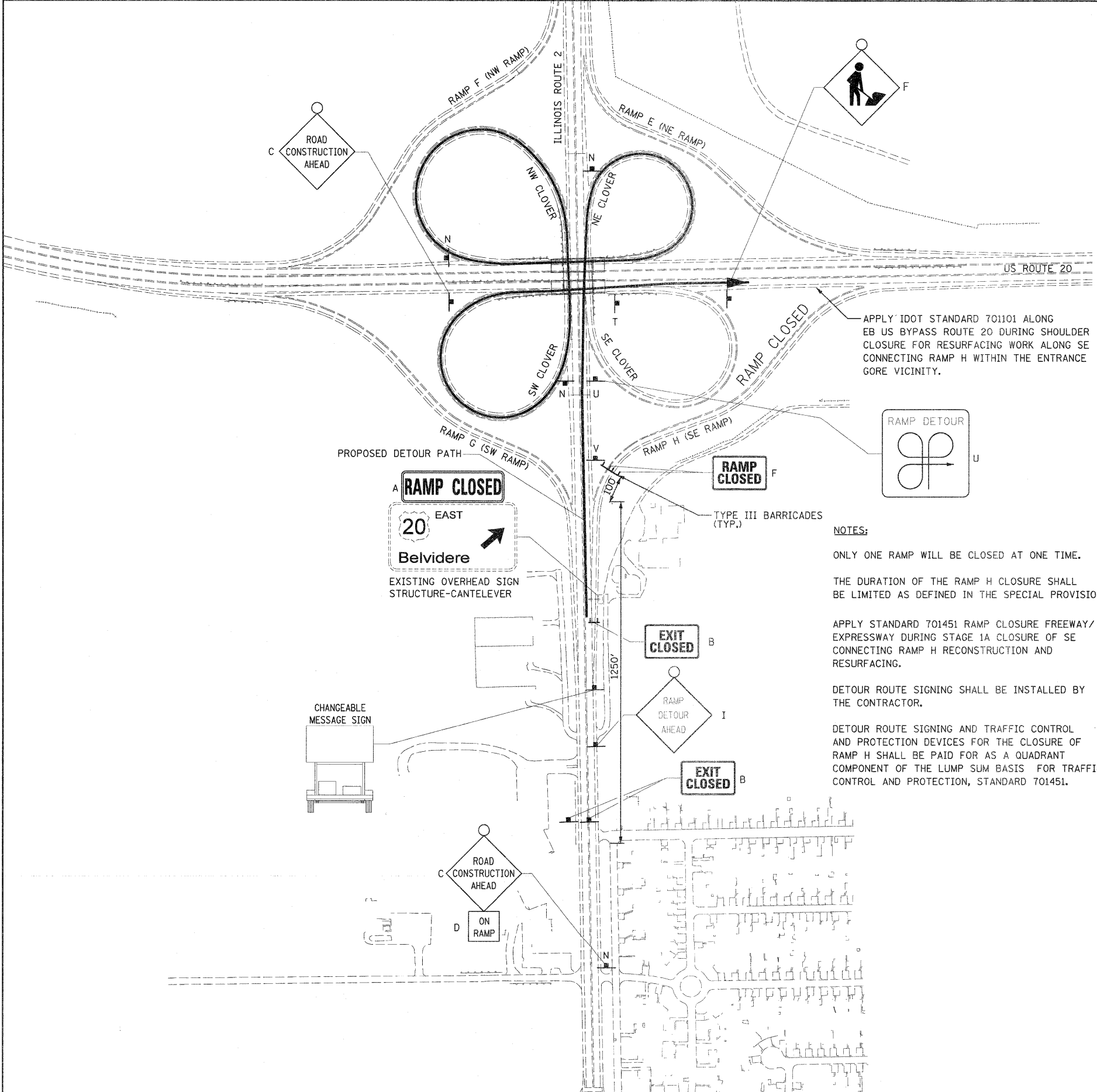


TRAFFIC CONTROL PLAN FOR RAMP H (SE RAMP) CLOSURE



LEGEND:

- A. **RAMP CLOSED** (SEE TEMPORARY SIGN DETAILS SHEET # 49)
- B. **EXIT CLOSED** E5-2a-4836
- C. **ROAD CONSTRUCTION AHEAD** W20-1103(O)-48
- D. **ON RAMP** W13-4-1818
- E. **ROAD CLOSED** R11-2
- F. **RAMP CLOSED**
- G. **ROAD CONSTRUCTION AHEAD** W21-1a(O)-48
- H. **TO** M4-5-3015
- I. **RAMP DETOUR AHEAD** 48"
- J. **TO** M4-5-3015
- K. **TO** M4-5-3015
- L. **TO** M4-5-3015
- M. **TO** M4-5-3015
- N. **TO** M4-5-3015
- O. **TO** M4-5-3015
- P. **TO** M4-5-3015
- Q. **TO** M4-5-3015
- R. **TO** M4-5-3015
- S. **TO** M4-5-3015
- T. **END DETOUR** M4-8a
- U. **SPECIAL SIGN (AA)**
- V. **TO** M4-5-3015

APPLY IDOT STANDARD 701101 ALONG EB US BYPASS ROUTE 20 DURING SHOULDER CLOSURE FOR RESURFACING WORK ALONG SE CONNECTING RAMP H WITHIN THE ENTRANCE GORE VICINITY.

NOTES:

- ONLY ONE RAMP WILL BE CLOSED AT ONE TIME.
- THE DURATION OF THE RAMP H CLOSURE SHALL BE LIMITED AS DEFINED IN THE SPECIAL PROVISIONS.
- APPLY STANDARD 701451 RAMP CLOSURE FREEWAY/ EXPRESSWAY DURING STAGE 1A CLOSURE OF SE CONNECTING RAMP H RECONSTRUCTION AND RESURFACING.
- DETOUR ROUTE SIGNING SHALL BE INSTALLED BY THE CONTRACTOR.
- DETOUR ROUTE SIGNING AND TRAFFIC CONTROL AND PROTECTION DEVICES FOR THE CLOSURE OF RAMP H SHALL BE PAID FOR AS A QUADRANT COMPONENT OF THE LUMP SUM BASIS FOR TRAFFIC CONTROL AND PROTECTION, STANDARD 701451.