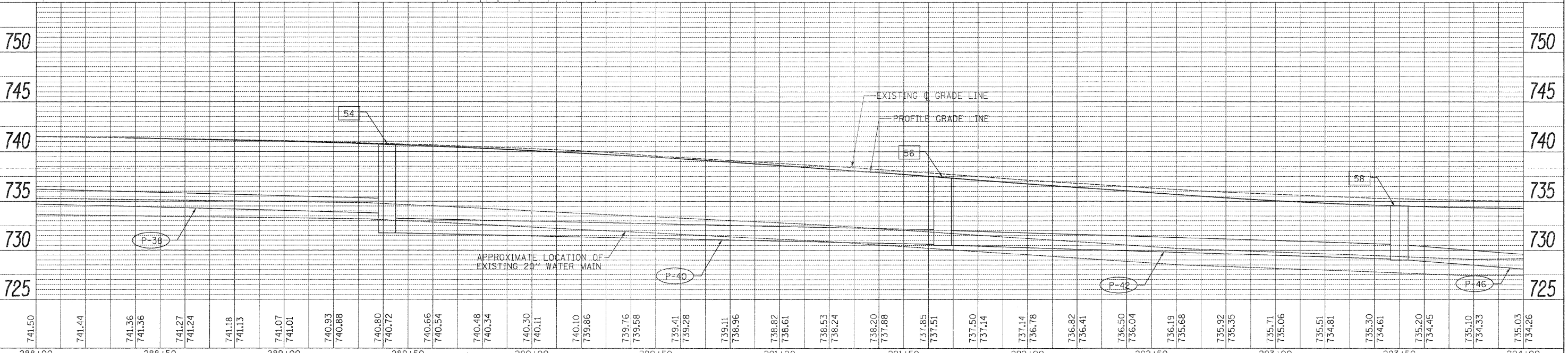
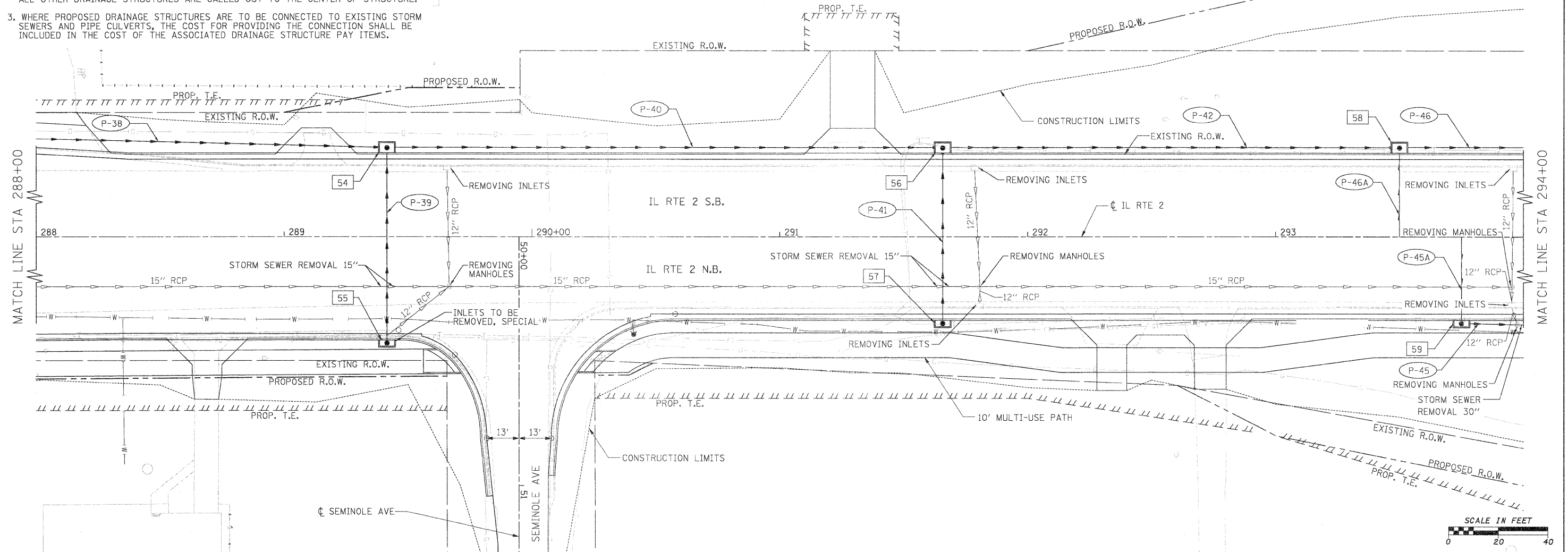


NOTE:

1. CONTRACTOR SHALL HAVE OPTION OF PLACING STANDARD MANHOLES IN LIEU OF FLAT SLAB TOPS WHERE CONDITIONS PERMIT.
2. RIM ELEVATIONS & OFFSETS FOR DRAINAGE STRUCTURES CONSTRUCTED IN CONJUNCTION WITH GUTTER OR CURB & GUTTER ARE CALLED OUT TO THE EDGE OF PAVEMENT. ALL OTHER DRAINAGE STRUCTURES ARE CALLED OUT TO THE CENTER OF STRUCTURE.
3. WHERE PROPOSED DRAINAGE STRUCTURES ARE TO BE CONNECTED TO EXISTING STORM SEWERS AND PIPE CULVERTS, THE COST FOR PROVIDING THE CONNECTION SHALL BE INCLUDED IN THE COST OF THE ASSOCIATED DRAINAGE STRUCTURE PAY ITEMS.

| | | |
|---------------|----------|------|
| PLAN | SURVEYED | DATE |
| NOTE BOOK NO. | ALIGNED | |
| | CHECKED | |
| | BY | |
| | DATE | |

| | | |
|---------------|----------|------|
| PROFILE | SURVEYED | DATE |
| NOTE BOOK NO. | PLOTTED | |
| | CHECKED | |
| | BY | |
| | DATE | |



| | | | | | | | | | | | | | | | | |
|-------------|--------------------|----------------|-----------|---|--|--|--|--|---------------------------|-------------|----------------|--------------------|-------------|------------------|------------------|---------------|
| FILE NAME = | USER NAME = #USER# | DESIGNED - GE | REVISED - | STATE OF ILLINOIS DEPARTMENT OF TRANSPORTATION | | | | FAP 742 (IL 2) PROPOSED DRAINAGE PLAN AND PROFILE | | | | F.A.P. RTE. 742 | SECTION 34R | COUNTY WINNEBAGO | TOTAL SHEETS 491 | SHEET NO. 206 |
| #FILE# | | DRAWN - GE | REVISED - | | | | | SCALE: 1" = 20' | SHEET NO. 13 OF 30 SHEETS | STA. 288+00 | TO STA. 294+00 | CONTRACT NO. 64515 | | | | |
| | | CHECKED - SL | REVISED - | | | | | | | | | | | | | |
| | | DATE - 05/2011 | REVISED - | | | | | | | | | | | | | |