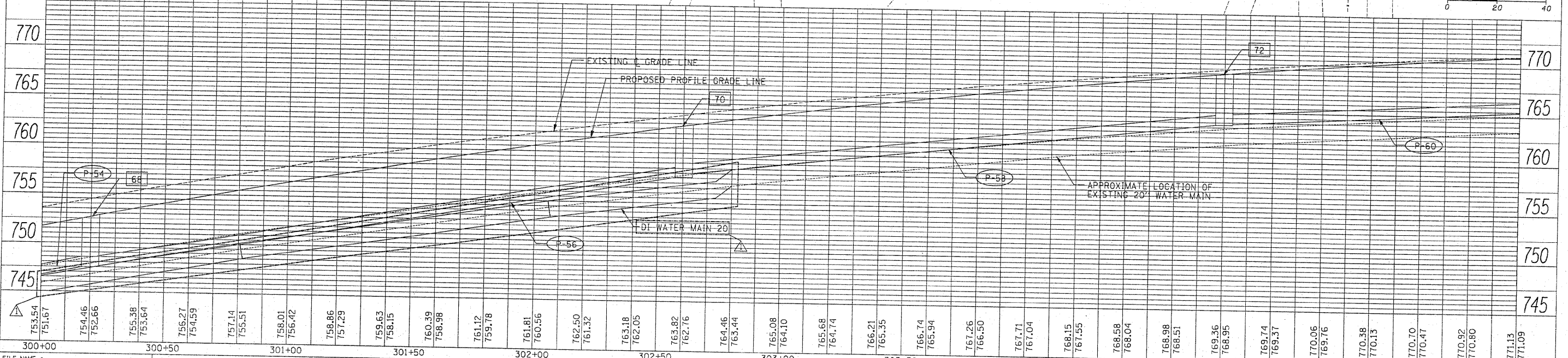
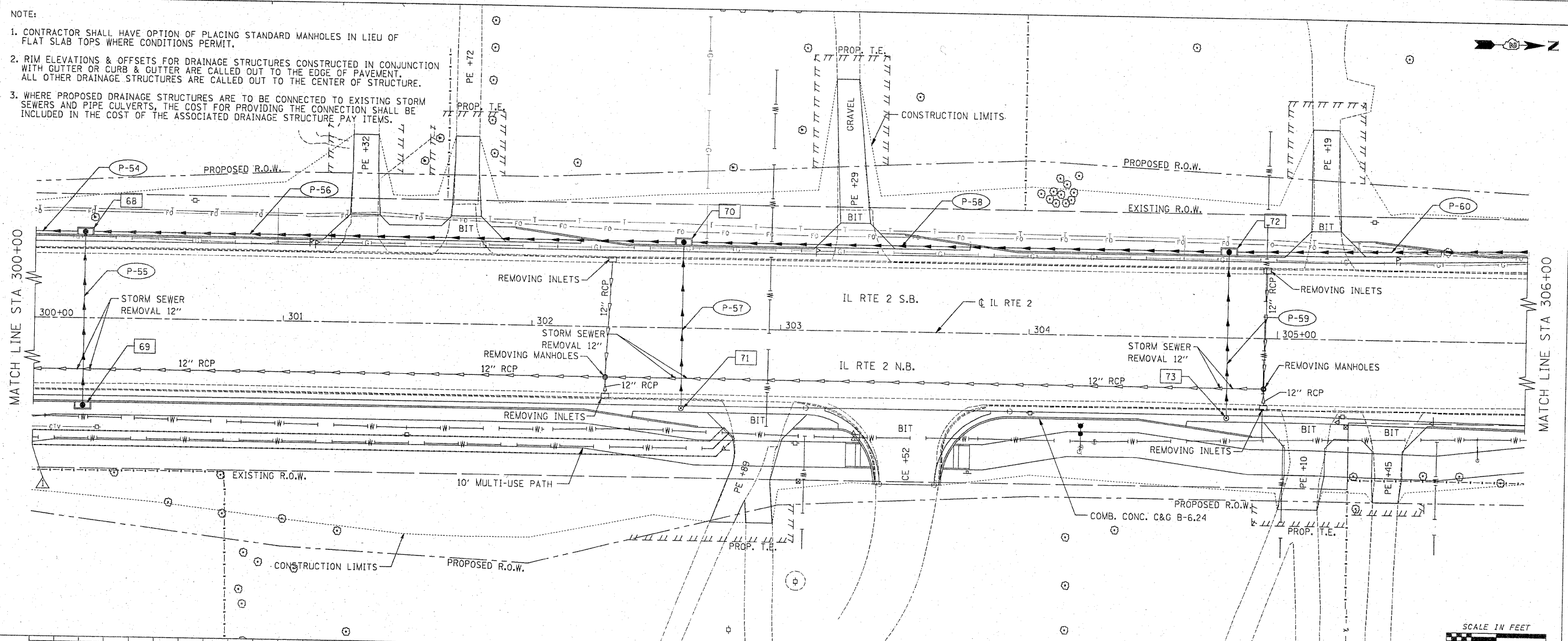


NOTE:

1. CONTRACTOR SHALL HAVE OPTION OF PLACING STANDARD MANHOLES IN LIEU OF FLAT SLAB TOPS WHERE CONDITIONS PERMIT.
2. RIM ELEVATIONS & OFFSETS FOR DRAINAGE STRUCTURES CONSTRUCTED IN CONJUNCTION WITH GUTTER OR CURB & GUTTER ARE CALLED OUT TO THE EDGE OF PAVEMENT. ALL OTHER DRAINAGE STRUCTURES ARE CALLED OUT TO THE CENTER OF STRUCTURE.
3. WHERE PROPOSED DRAINAGE STRUCTURES ARE TO BE CONNECTED TO EXISTING STORM SEWERS AND PIPE CULVERTS, THE COST FOR PROVIDING THE CONNECTION SHALL BE INCLUDED IN THE COST OF THE ASSOCIATED DRAINAGE STRUCTURE PAY ITEMS.

DATE	
BY	
REVISIONS	
NO.	
DATE	
BY	
REVISIONS	
NO.	
DATE	
BY	
REVISIONS	
NO.	
DATE	
BY	
REVISIONS	
NO.	
DATE	
BY	
REVISIONS	
NO.	

DATE	
BY	
REVISIONS	
NO.	
DATE	
BY	
REVISIONS	
NO.	
DATE	
BY	
REVISIONS	
NO.	
DATE	
BY	
REVISIONS	
NO.	



FILE NAME = E:\1003\Plan Sheets\POP 15.dgn	USER NAME = Plotted by Fred 576	DESIGNED - GE	REVISED - 03/26/2012	STATE OF ILLINOIS DEPARTMENT OF TRANSPORTATION FAP 742 (IL 2) PROPOSED DRAINAGE PLAN AND PROFILE	<table border="1"> <tr><td>F.A.P. RTE.</td><td>SECTION</td><td>COUNTY</td><td>TOTAL SHEETS</td><td>SHEET NO.</td></tr> <tr><td>742</td><td>34R</td><td>WINNEBAGO</td><td>491</td><td>208</td></tr> <tr><td colspan="4"></td><td>CONTRACT NO. 64515</td></tr> </table>	F.A.P. RTE.	SECTION	COUNTY	TOTAL SHEETS	SHEET NO.	742	34R	WINNEBAGO	491	208					CONTRACT NO. 64515
F.A.P. RTE.	SECTION	COUNTY	TOTAL SHEETS			SHEET NO.														
742	34R	WINNEBAGO	491			208														
						CONTRACT NO. 64515														
	PLT SCALE = 20.0000' / IN.	CHECKED - SL	REVISED -																	
	PLT DATE = 3/27/2012	DATE - 05/2011	REVISED -																	
				SCALE: 1" = 20'	SHEET NO. 15 OF 30 SHEETS	STA. 300+00 TO STA. 306+00	(ILLINOIS) FED. AID PROJECT													