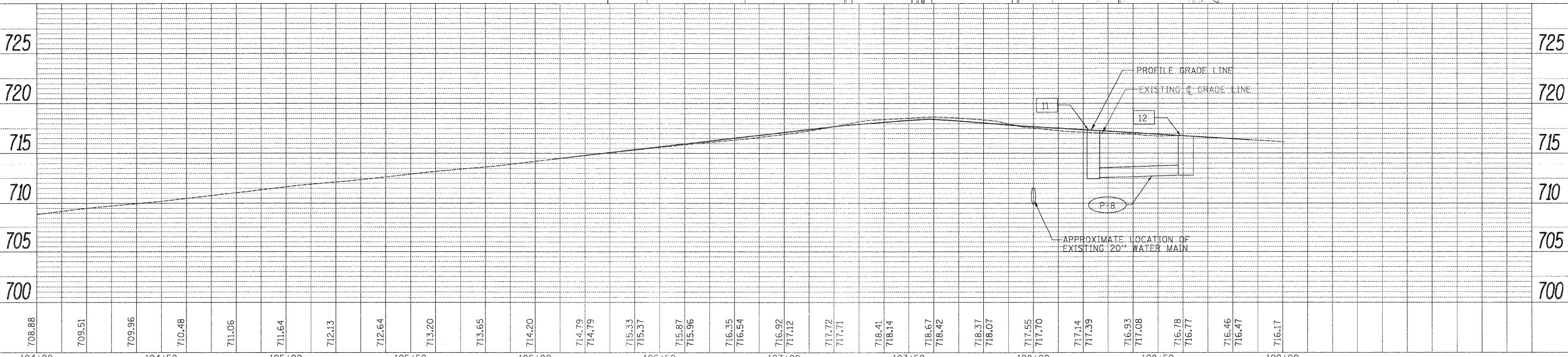
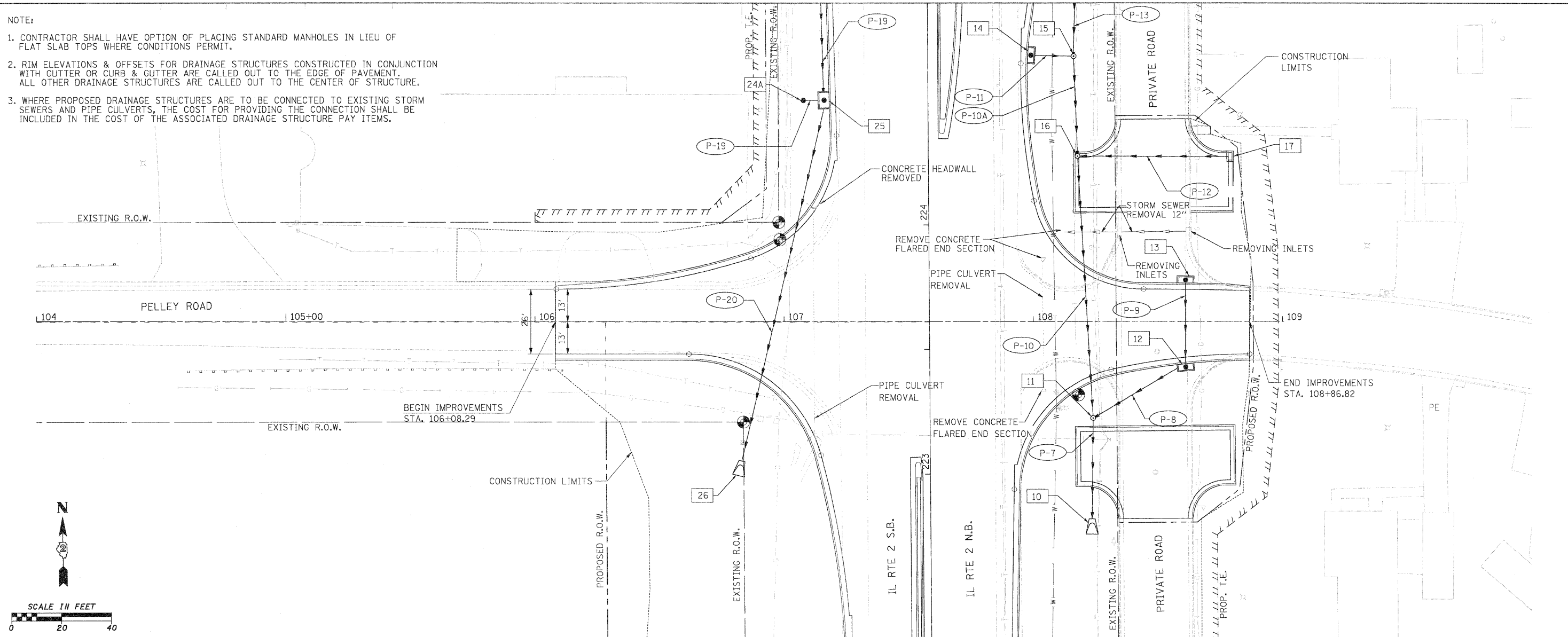


NOTE:

1. CONTRACTOR SHALL HAVE OPTION OF PLACING STANDARD MANHOLES IN LIEU OF FLAT SLAB TOPS WHERE CONDITIONS PERMIT.
2. RIM ELEVATIONS & OFFSETS FOR DRAINAGE STRUCTURES CONSTRUCTED IN CONJUNCTION WITH GUTTER OR CURB & GUTTER ARE CALLED OUT TO THE EDGE OF PAVEMENT. ALL OTHER DRAINAGE STRUCTURES ARE CALLED OUT TO THE CENTER OF STRUCTURE.
3. WHERE PROPOSED DRAINAGE STRUCTURES ARE TO BE CONNECTED TO EXISTING STORM SEWERS AND PIPE CULVERTS, THE COST FOR PROVIDING THE CONNECTION SHALL BE INCLUDED IN THE COST OF THE ASSOCIATED DRAINAGE STRUCTURE PAY ITEMS.

PLAN	DATE
BY	
REVISIONS	
NO.	DESCRIPTION

PROFILE	DATE
BY	
REVISIONS	
NO.	DESCRIPTION



FILE NAME =	USER NAME = #USER#	DESIGNED - GE	REVISED -	STATE OF ILLINOIS DEPARTMENT OF TRANSPORTATION	PELLEY ROAD PROPOSED DRAINAGE PLAN AND PROFILE	F.A.P. RTE.	SECTION	COUNTY	TOTAL SHEETS	SHEET NO.	
#FILE#	PLOT SCALE = #SCALE#	DRAWN - GE	REVISED -			742	34R	WINNEBAGO	491	215	
	PLOT DATE = #DATE#	CHECKED - SL	REVISED -			CONTRACT NO. 64515					
		DATE - 05/2011	REVISED -			ILLINOIS FED. AID PROJECT					