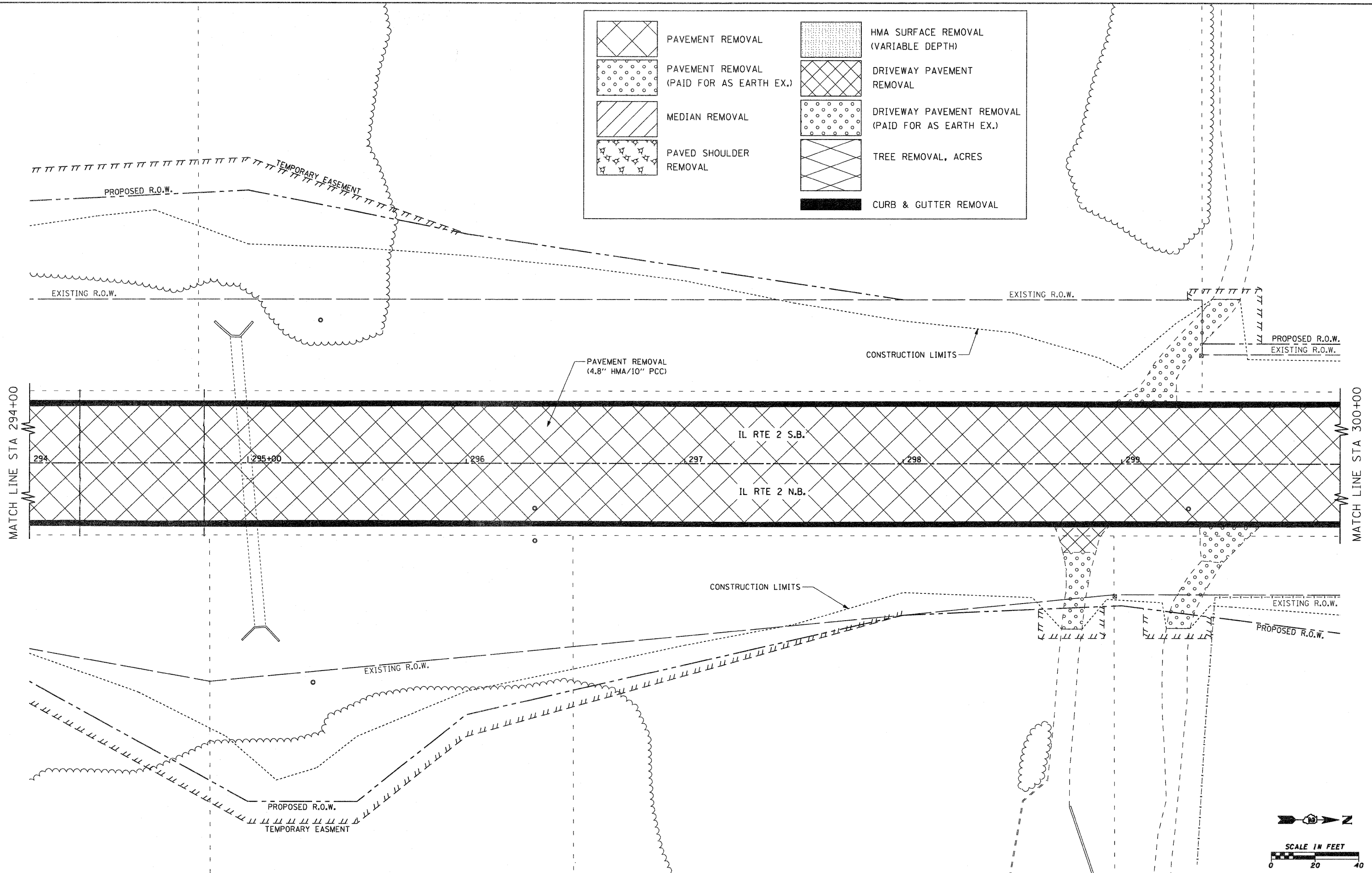
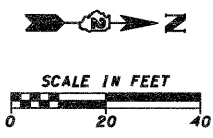


	PAVEMENT REMOVAL		HMA SURFACE REMOVAL (VARIABLE DEPTH)
	PAVEMENT REMOVAL (PAID FOR AS EARTH EX.)		DRIVEWAY PAVEMENT REMOVAL
	MEDIAN REMOVAL		DRIVEWAY PAVEMENT REMOVAL (PAID FOR AS EARTH EX.)
	PAVED SHOULDER REMOVAL		TREE REMOVAL, ACRES
			CURB & GUTTER REMOVAL



MATCH LINE STA 294+00

MATCH LINE STA 300+00



FILE NAME =	USER NAME = p2tp	DESIGNED -	REVISED -	<b>STATE OF ILLINOIS DEPARTMENT OF TRANSPORTATION</b>	<b>FAP 742 (IL 2) REMOVAL PLAN</b>	F.A.P. RTE.	SECTION	COUNTY	TOTAL SHEETS	SHEET NO.	
gn\2010\trans\bl\201\dgn\removal plans	12\001500 REM IL2 14.dgn	DRAWN -	REVISED -			742	34R	WINNEBAGO	491	237	
	PLOT SCALE = 20.0000' / IN.	CHECKED -	REVISED -			CONTRACT NO. 64515					
	PLOT DATE = 1/26/2012	DATE -	REVISED -			ILLINOIS FED. AID PROJECT					
				SCALE: 1" = 20'		SHEET NO. OF SHEETS		STA. 294+00.00 TO STA. 300+00.00			