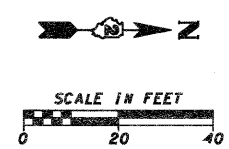
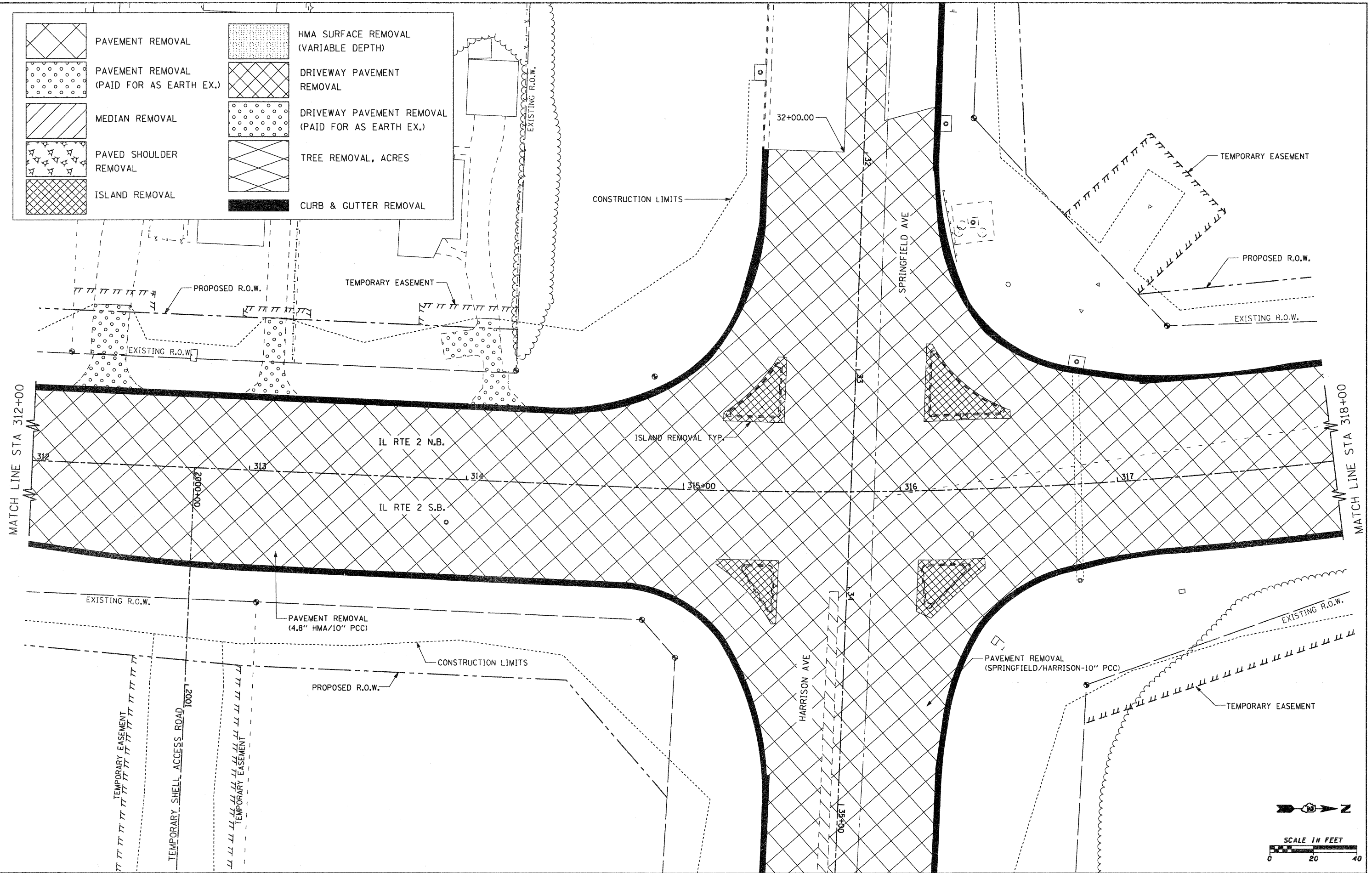


	PAVEMENT REMOVAL		HMA SURFACE REMOVAL (VARIABLE DEPTH)
	PAVEMENT REMOVAL (PAID FOR AS EARTH EX.)		DRIVEWAY PAVEMENT REMOVAL
	MEDIAN REMOVAL		DRIVEWAY PAVEMENT REMOVAL (PAID FOR AS EARTH EX.)
	PAVED SHOULDER REMOVAL		TREE REMOVAL, ACRES
	ISLAND REMOVAL		CURB & GUTTER REMOVAL



FILE NAME = g:\2010\trans\bl8t001\dgn\removal plans	USER NAME = pstp	DESIGNED -	REVISED -	STATE OF ILLINOIS DEPARTMENT OF TRANSPORTATION	FAP 742 (IL 2) REMOVAL PLAN	F.A.P. RTE. 742	SECTION 34R	COUNTY WINNEBAGO	TOTAL SHEETS 491	SHEET NO. 240		
	12\001500 REM IL2 17.dgn	DRAWN -	REVISED -			SCALE: 1" = 20'	SHEET NO. OF SHEETS	STA. 312+00.00 TO STA. 318+00.00	CONTRACT NO. 64515			
	PLOT SCALE = 20,0000' / IN.	CHECKED -	REVISED -			ILLINOIS FED. AID PROJECT						
	PLOT DATE = 1/26/2012	DATE -	REVISED -									