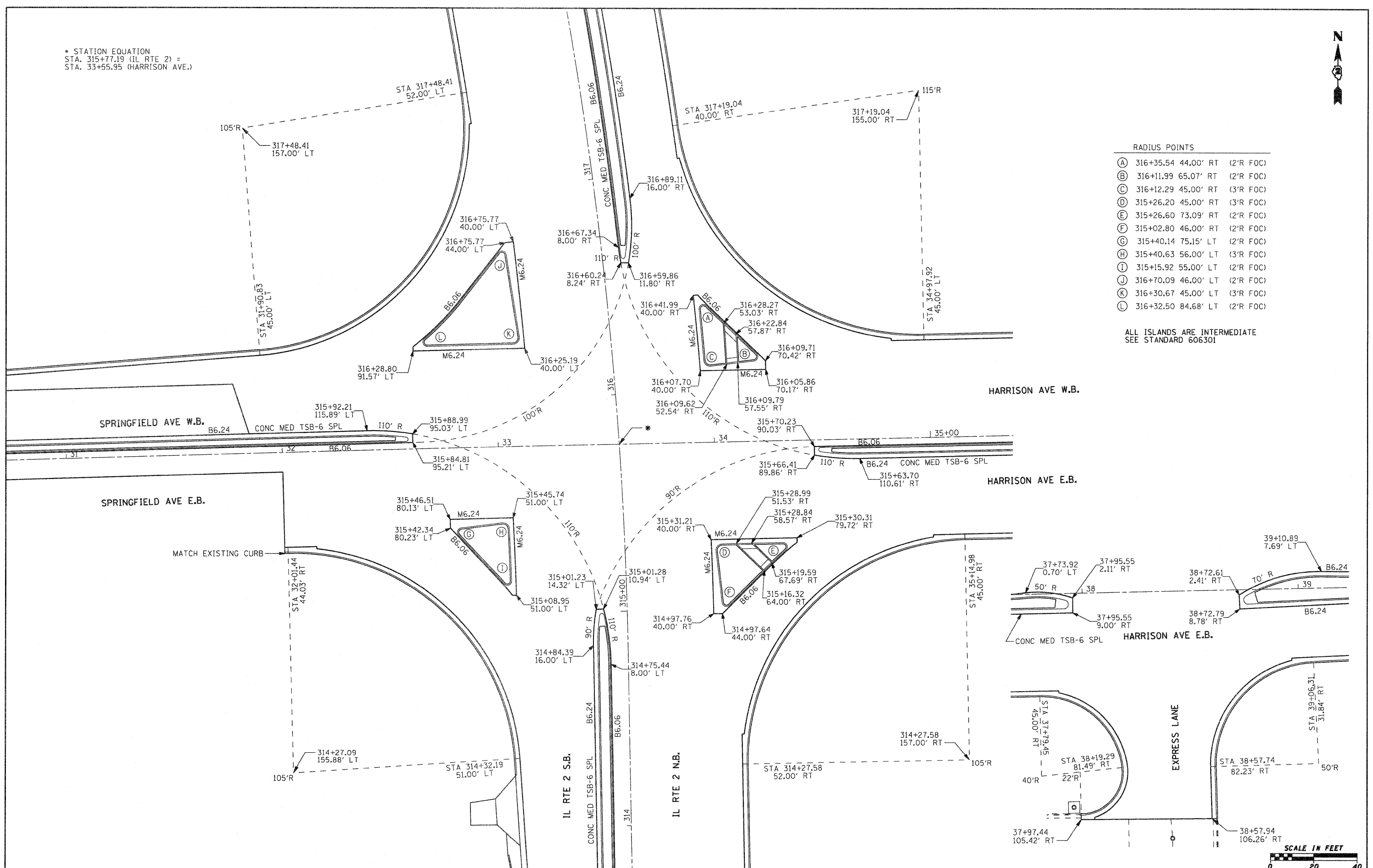


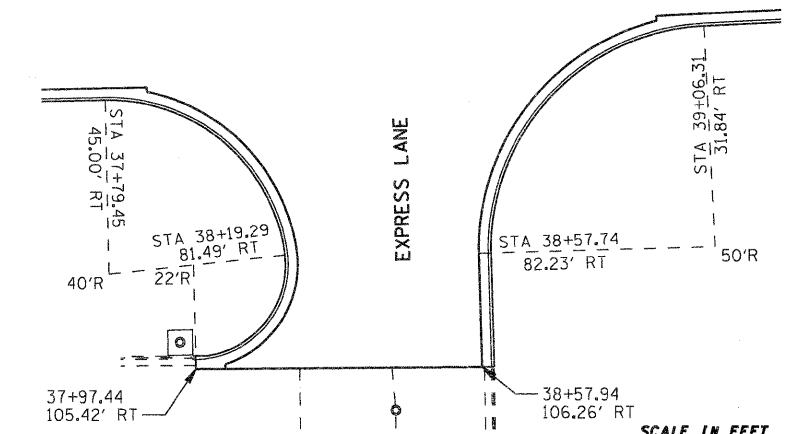
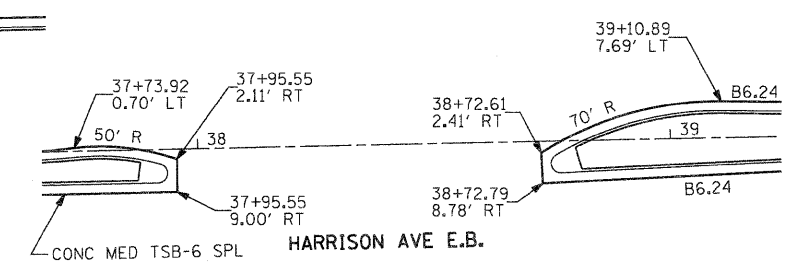
\* STATION EQUATION  
 STA. 315+77.19 (IL RTE 2) =  
 STA. 33+55.95 (HARRISON AVE.)



RADIUS POINTS

(A)	316+35.54	44.00' RT	(2'R FOC)
(B)	316+11.99	65.07' RT	(2'R FOC)
(C)	316+12.29	45.00' RT	(3'R FOC)
(D)	315+26.20	45.00' RT	(3'R FOC)
(E)	315+26.60	73.09' RT	(2'R FOC)
(F)	315+02.80	46.00' RT	(2'R FOC)
(G)	315+40.14	75.15' LT	(2'R FOC)
(H)	315+40.63	56.00' LT	(3'R FOC)
(I)	315+15.92	55.00' LT	(2'R FOC)
(J)	316+70.09	46.00' LT	(2'R FOC)
(K)	316+30.67	45.00' LT	(3'R FOC)
(L)	316+32.50	84.68' LT	(2'R FOC)

ALL ISLANDS ARE INTERMEDIATE  
 SEE STANDARD 606301



FILE NAME = gr\2010\trans\bl8\001\dgn\elevations\Harr	USER NAME = petp Harrison Layout Detail.dgn	DESIGNED - DRAWN -	REVISED - REVISED -	<b>STATE OF ILLINOIS DEPARTMENT OF TRANSPORTATION</b>		<b>FAP 742 (IL 2) INTERSECTION DETAIL SPRINGFIELD &amp; HARRISON AVENUE</b>		F.A.P. RTE. 742	SECTION 34R	COUNTY WINNEBAGO	TOTAL SHEETS 491	SHEET NO. 251
PLOT SCALE = 20.0000' / IN. PLOT DATE = 1/26/2012		CHECKED - DATE -	REVISED - REVISED -					SCALE: 1" = 20'		SHEET NO. OF SHEETS	STA. TO STA.	CONTRACT NO. 64515 ILLINOIS FED. AID PROJECT