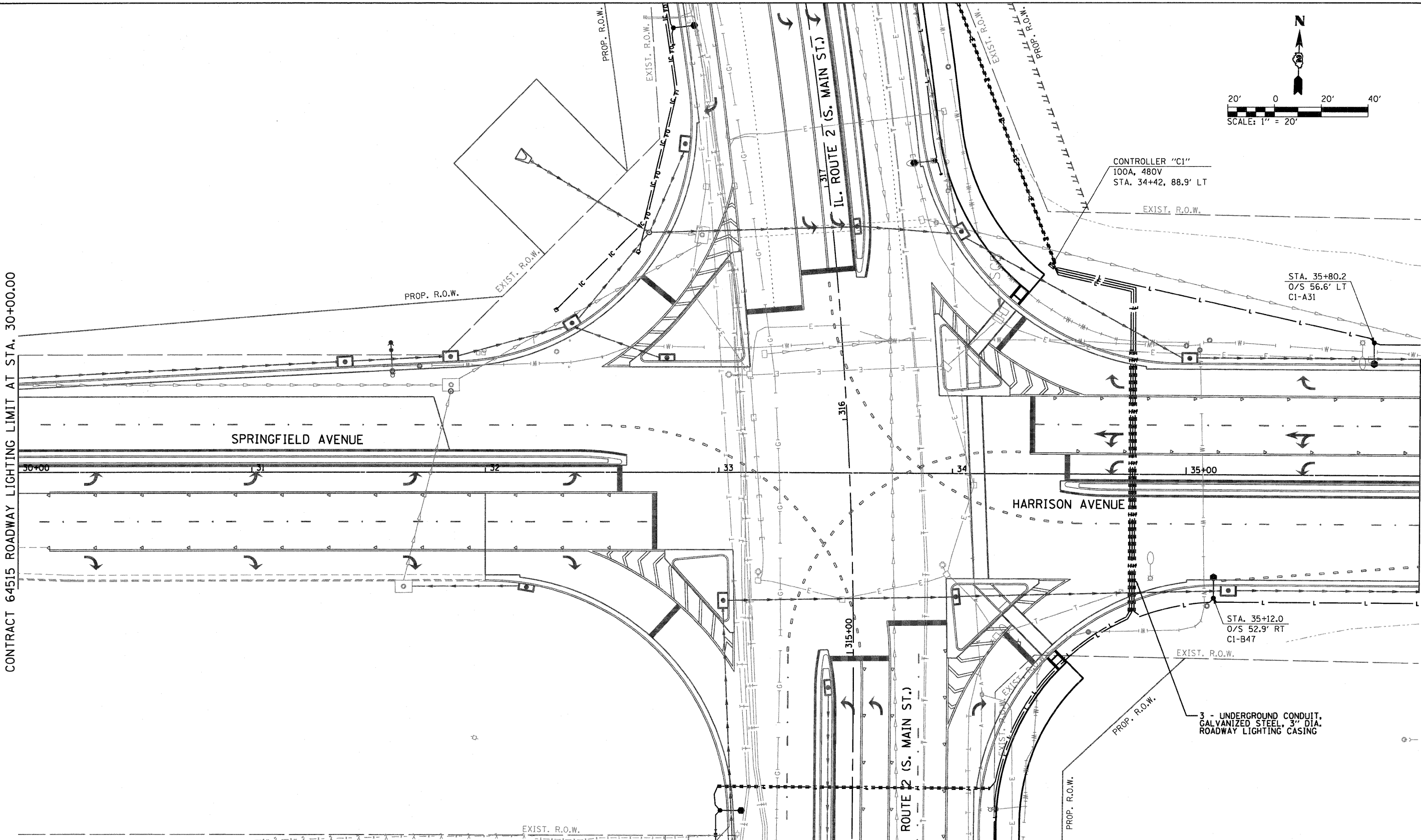


CONTRACT 64515 ROADWAY LIGHTING LIMIT AT STA. 30+00.00

MATCH LINE 36+00.00

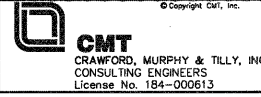


**LEGEND**

- EXISTING ROADWAY LIGHTPOLE AND LUMINAIRE TO BE REMOVED, SALVAGE
- PROPOSED DECORATIVE LIGHT POLE AND LUMINAIRE ALUMINUM, 40 FT. M.H., PULSE START METAL HALIDE, HORIZONTAL MOUNT 400 WATT (SEE NOTE 13 ON SHEET 301)
- IC — PROPOSED UNDERGROUND CONDUIT, HDPE SDR-11, 1 1/2" DIA. WITH PULL STRING AND TRACER WIRE
- ◆ PROPOSED UTILITY POLE (BY OTHERS)
- PROPOSED LIGHTING CONTROLLER, 100 AMP, 480V
- HH = PROPOSED HANDHOLE PER IDOT STD 814001
- CHH = PROPOSED HANDHOLE, COMPOSITE CONCRETE TYPE AS INDICATED
- — — — — PROPOSED UNDERGROUND CONDUIT, GALVANIZED STEEL, BORED AND PULLED, SIZE AND CONDUCTORS AS INDICATED.
- L — PROPOSED UNIT DUCT, 600V, 2-1C NO.6, 1/C NO.6 GROUND, (XLP-TYPE USE), 1 1/4" DIA. POLYETHYLENE
- FO — PROPOSED UNDERGROUND CONDUIT, COLLABLE NONMETALLIC CONDUIT, 2" DIA. WITH PULL STRING AND TRACER WIRE
- — — — — PROPOSED UNDERGROUND CONDUIT, GALVANIZED STEEL, SIZE AND CONDUCTORS AS INDICATED

**NOTES:**

1. REFER TO ROADWAY LIGHTING NOTES ON SHEET 301.



USER NAME = Jason Dove	DESIGNED - AS	REVISED - 04/17/2012
FILE NAME: D264515-sht-light109.dgn	DRAWN - JWD	REVISED -
PLOT SCALE = 20.0000' / in.	CHECKED - AB	REVISED -
PLOT DATE = 4/18/2012 - 6:15:11 PM	DATE - 01/25/2012	REVISED -

**STATE OF ILLINOIS  
DEPARTMENT OF TRANSPORTATION**

<b>ROADWAY LIGHTING PLAN</b>			
<b>SPRINGFIELD AVENUE / HARRISON AVENUE</b>			
SCALE: 1" = 20'	SHEET 9	OF 20 SHEETS	STA. 30+00 TO STA. 36+00

F.A.P. RTE.	SECTION	COUNTY	TOTAL SHEETS	SHEET NO.
742	34R	WINNEBAGO	491	309
CONTRACT NO. 64515				
ILLINOIS FED. AID PROJECT				

DIRECTORY = L:\RCDK\FORD\1126084\A\en\A\CADD\_Sheets\0264515\_Missouri.dwg