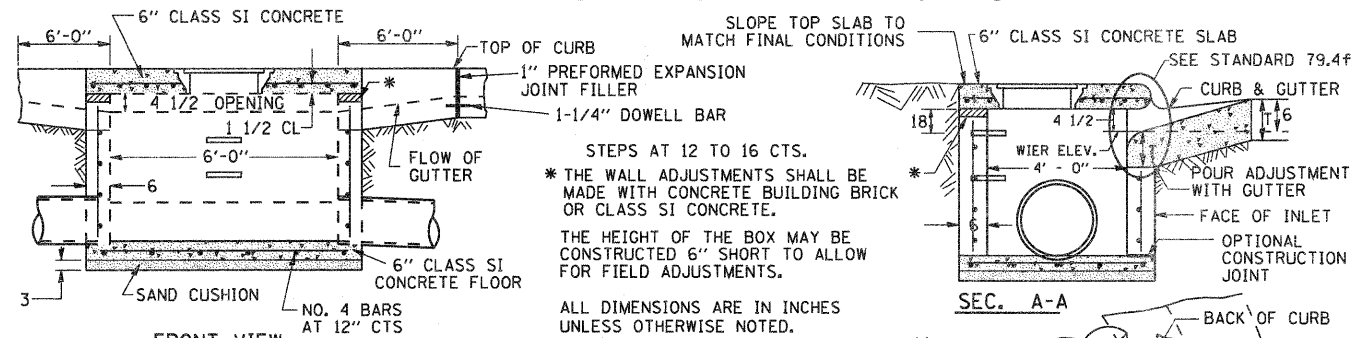


INLET SPECIAL NO. 3



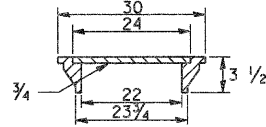
STEPS AT 12 TO 16 CTS.
 * THE WALL ADJUSTMENTS SHALL BE MADE WITH CONCRETE BUILDING BRICK OR CLASS SI CONCRETE.
 THE HEIGHT OF THE BOX MAY BE CONSTRUCTED 6" SHORT TO ALLOW FOR FIELD ADJUSTMENTS.
 ALL DIMENSIONS ARE IN INCHES UNLESS OTHERWISE NOTED.

NOTES

STEPS SHALL BE OMITTED WHEN DEPTH OF INLET IS LESS THAN 5 FOOT
 THE INLET SHALL BE CAST IN PLACE OR PRECAST.
 EXCEPT AS NOTED HEREON INLET SPECIAL NO. 3 SHALL BE CONSTRUCTED IN ACCORDANCE WITH SECTION 602 OF THE STANDARD SPECIFICATIONS.
 THE CONTRACT UNIT PRICE EACH FOR INLET SPECIAL NO. 3 SHALL INCLUDE THE COST OF FURNISHING AND INSTALLING THE FRAME, LID, REINFORCEMENT BARS, FLOOR AND TOP SLABS, CAST IRON STEPS (IF USED).
 THE CURB AND GUTTER WILL BE PAID FOR SEPARATELY AND WILL BE MEASURED THROUGH THE INLET.
 THE CURB AND GUTTER ADJACENT TO AND 6 FOOT ON EITHER SIDE OF THE INLET SHALL BE CONSTRUCTED AS SHOWN WITH NO ADDITIONAL COMPENSATION FOR THE TRANSITION.
 ALL PIPE UNDERDRAIN CONNECTIONS WHEN SPECIFIED SHALL BE DONE IN ACCORDANCE WITH ART. 601 OF THE STANDARD SPECIFICATIONS. THIS WORK WILL BE PAID FOR AT THE CONTRACT UNIT PRICE PER (FOOT) FOR PIPE UNDERDRAINS (SPECIAL) OF THE DIAMETER SPECIFIED WHICH PRICE SHALL INCLUDE THE CAT OR CA16 AND THE CONNECTION TO THE INLET.

SEE STANDARD 602701 FOR DETAILS OF STEPS. 1" PREFORMED EXPANSION JOINTS AS SHOWN SHALL BE PROVIDED ON EACH SIDE OF INLET. CLASS SI CONCRETE OR PRECAST CONCRETE SHALL BE USED THROUGHOUT. THE SIDE WALLS MAY BE BUILT AS PRECAST SEGMENTAL SECTIONS. REINFORCEMENT FOR INLET SPECIAL NO. 3 SHALL BE ACCORDING TO DISTRICT STANDARD 79.4g

LIGHT WEIGHT MANHOLE CASTING

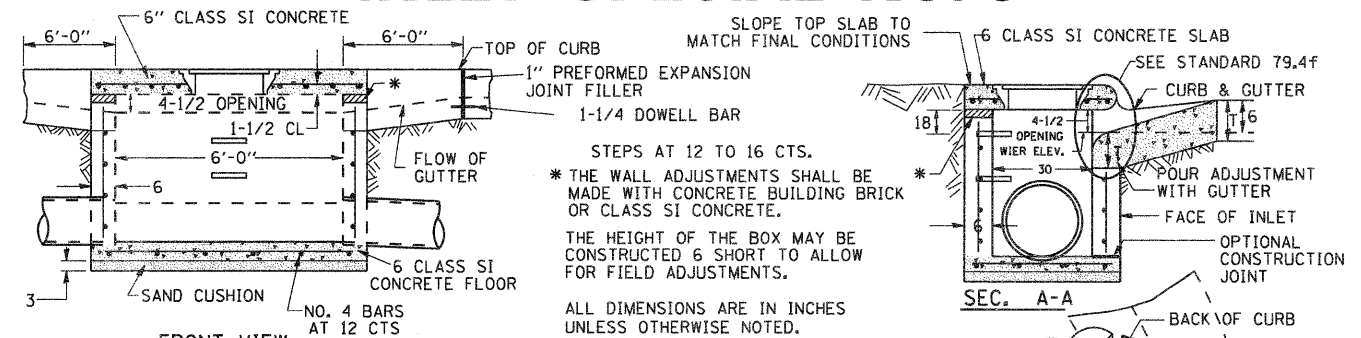


TOTAL WEIGHT 160 LBS.

REVISED - 10-3-11

INLET SPECIAL NO. 3 79.4

INLET SPECIAL NO. 5



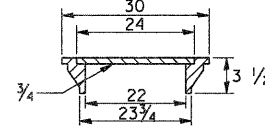
STEPS AT 12 TO 16 CTS.
 * THE WALL ADJUSTMENTS SHALL BE MADE WITH CONCRETE BUILDING BRICK OR CLASS SI CONCRETE.
 THE HEIGHT OF THE BOX MAY BE CONSTRUCTED 6" SHORT TO ALLOW FOR FIELD ADJUSTMENTS.
 ALL DIMENSIONS ARE IN INCHES UNLESS OTHERWISE NOTED.

NOTES

STEPS SHALL BE OMITTED WHEN DEPTH OF INLET IS LESS THAN 5 FOOT
 THE INLET SHALL BE CAST IN PLACE OR PRECAST.
 EXCEPT AS NOTED HEREON INLET SPECIAL NO. 5 SHALL BE CONSTRUCTED IN ACCORDANCE WITH SECTION 602 OF THE STANDARD SPECIFICATIONS.
 THE CONTRACT UNIT PRICE EACH FOR INLET SPECIAL NO. 5 SHALL INCLUDE THE COST OF FURNISHING AND INSTALLING THE FRAME, LID, REINFORCEMENT BARS, FLOOR AND TOP SLABS, CAST IRON STEPS (IF USED).
 THE CURB AND GUTTER WILL BE PAID FOR SEPARATELY AND WILL BE MEASURED THROUGH THE INLET.
 THE CURB AND GUTTER ADJACENT TO AND 6 FOOT ON EITHER SIDE OF THE INLET SHALL BE CONSTRUCTED AS SHOWN WITH NO ADDITIONAL COMPENSATION FOR THE TRANSITION.
 ALL PIPE UNDERDRAIN CONNECTIONS WHEN SPECIFIED SHALL BE DONE IN ACCORDANCE WITH ART. 601 OF THE STANDARD SPECIFICATIONS. THIS WORK WILL BE PAID FOR AT THE CONTRACT UNIT PRICE PER (FOOT) FOR PIPE UNDERDRAINS (SPECIAL) OF THE DIAMETER SPECIFIED WHICH PRICE SHALL INCLUDE THE CAT OR CA16 AND THE CONNECTION TO THE INLET.

SEE STANDARD 602701 FOR DETAILS OF STEPS. 1" PREFORMED EXPANSION JOINTS AS SHOWN SHALL BE PROVIDED ON EACH SIDE OF INLET. CLASS SI CONCRETE OR PRECAST CONCRETE SHALL BE USED THROUGHOUT. THE SIDE WALLS MAY BE BUILT AS PRECAST SEGMENTAL SECTIONS. REINFORCEMENT FOR INLET SPECIAL NO. 5 SHALL BE ACCORDING TO DISTRICT STANDARD 79.4g

LIGHT WEIGHT MANHOLE CASTING

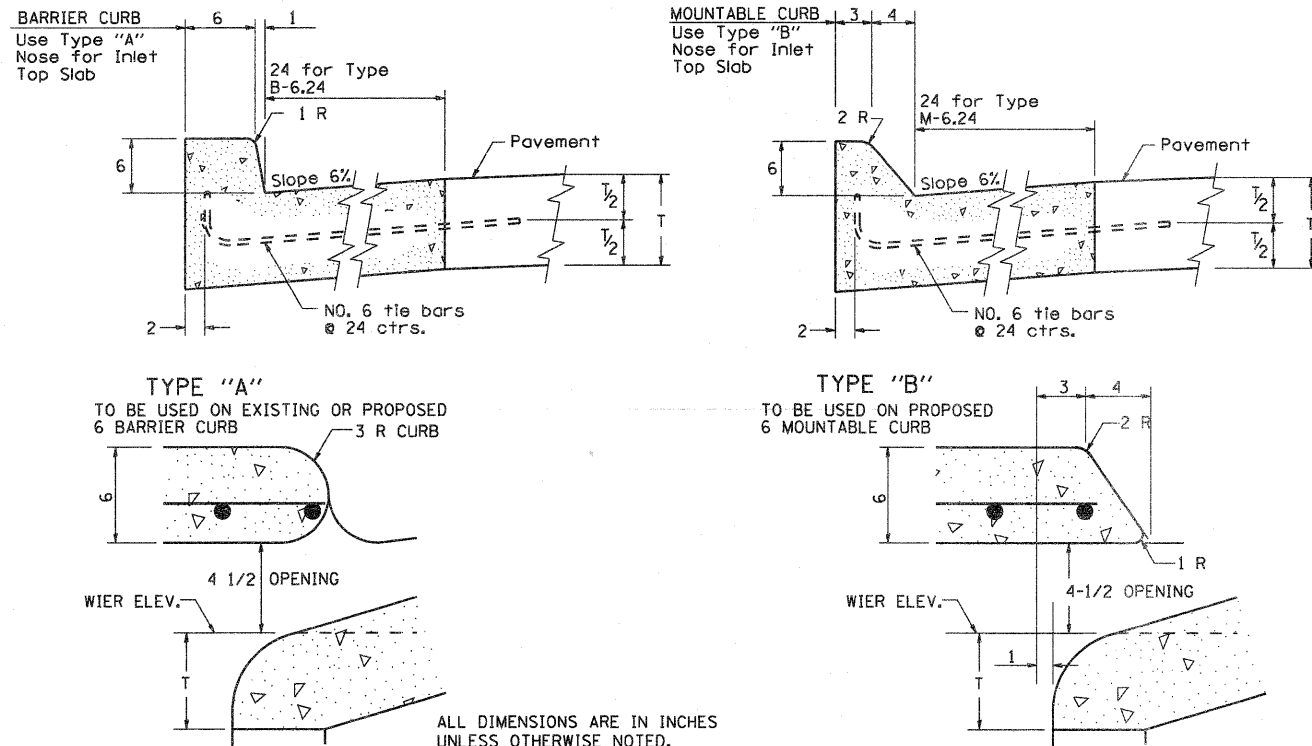


TOTAL WEIGHT 160 LBS.

REVISED - 10-4-11

INLET SPECIAL NO. 5 79.4b

NOSE TYPE FOR INLET TOP SLAB

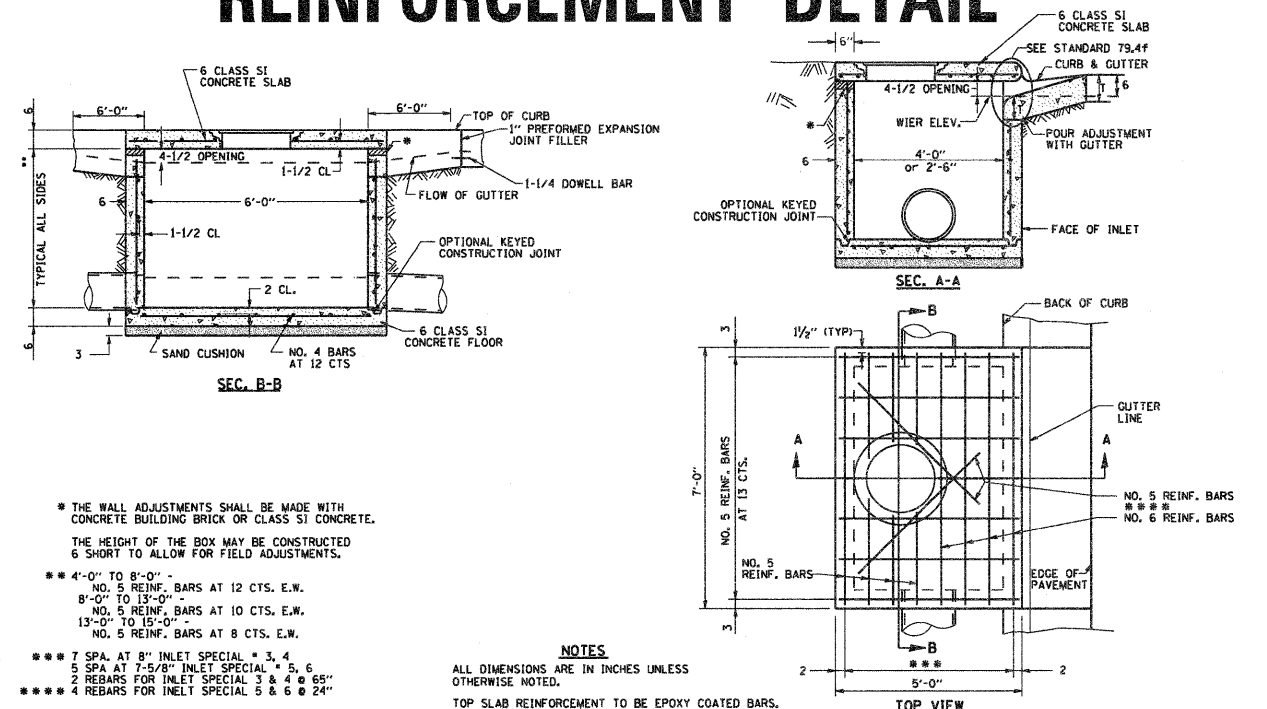


ALL DIMENSIONS ARE IN INCHES UNLESS OTHERWISE NOTED.

REVISED - 10-5-11

NOSE TYPE FOR INLET TOP SLAB 79.4f

INLET SPECIAL NO. 3, 4, 5, 6 REINFORCEMENT DETAIL



* THE WALL ADJUSTMENTS SHALL BE MADE WITH CONCRETE BUILDING BRICK OR CLASS SI CONCRETE.
 THE HEIGHT OF THE BOX MAY BE CONSTRUCTED 6" SHORT TO ALLOW FOR FIELD ADJUSTMENTS.
 ** 4'-0" TO 8'-0" - NO. 5 REINF. BARS AT 12 CTS. E.W.
 8'-0" TO 13'-0" - NO. 5 REINF. BARS AT 10 CTS. E.W.
 13'-0" TO 15'-0" - NO. 5 REINF. BARS AT 8 CTS. E.W.
 *** SPA. AT 8" INLET SPECIAL * 3, 4
 5 SPA AT 7.5/8" INLET SPECIAL * 5, 6
 2 REBARS FOR INLET SPECIAL 3 & 4 @ 65"
 ***** 4 REBARS FOR INLET SPECIAL 5 & 6 @ 24"

NOTES
 ALL DIMENSIONS ARE IN INCHES UNLESS OTHERWISE NOTED.
 TOP SLAB REINFORCEMENT TO BE EPOXY COATED BARS.

REVISED - 10-5-11
 REVISED -
 REVISED -
 REVISED -

REGION 2 / DISTRICT 2 STANDARD

F.A. RTE.	SECTION	COUNTY	TOTAL SHEETS	SHEET NO.
742	34R	WINNEBAGO	491	337
CONTRACT NO. 64515				

FED. ROAD DIST. NO. [] ILLINOIS FED. AID PROJECT

INLET SPECIAL NO. 3, 4, 5, 6 REINFORCEMENT DETAIL 79.4g

PLOT DATE = 1/17/2012