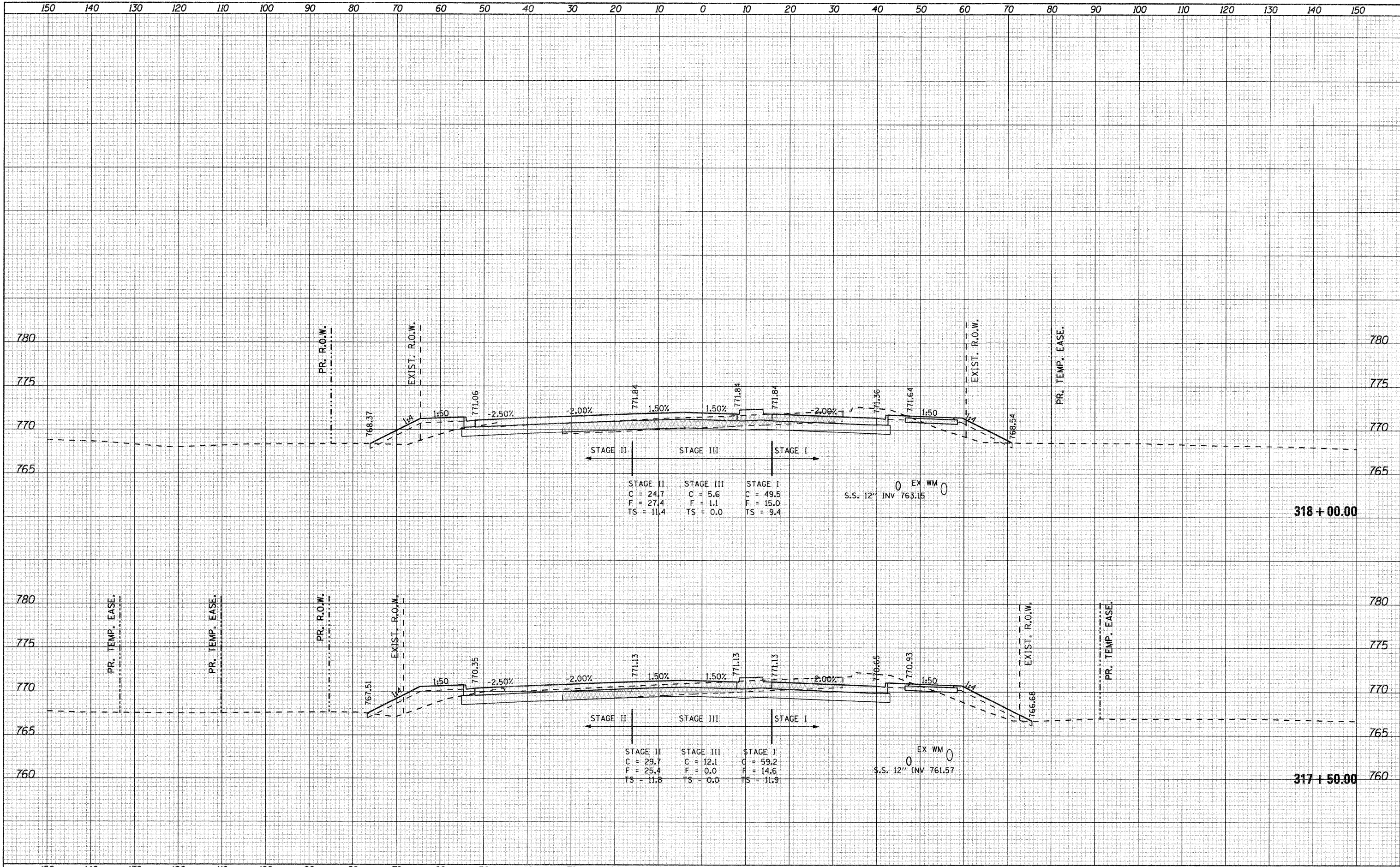


| | | |
|---------------|----|------|
| FINAL SURVEY | BY | DATE |
| SURVEYED | | |
| PLOTTED | | |
| NOTE BOOK | | |
| AREAS CHECKED | | |
| NO. | | |

| | | |
|-----------------|----|------|
| ORIGINAL SURVEY | BY | DATE |
| SURVEYED | | |
| PLOTTED | | |
| NOTE BOOK | | |
| AREAS CHECKED | | |
| NO. | | |



FILE NAME = g:\2010\trans\101001\dgn\cross sections\001500\001500_SHT_IL2.dgn
 USER NAME = pstp
 PLOT SCALE = 10.0000' / IN.
 PLOT DATE = 1/23/2012

DESIGNED -
 DRAWN -
 CHECKED -
 DATE -

REVISED -
 REVISED -
 REVISED -
 REVISED -

**STATE OF ILLINOIS
 DEPARTMENT OF TRANSPORTATION**

FAP 742 (IL2)

SCALE: SHEET NO. OF SHEETS STA. 317+50.00 TO STA. 318+00.00

| | | | | |
|--------------------|----------------|---------------------|---------------------------|------------------|
| F.A.P. RTE. 742 | SECTION 34R | COUNTY WINNEBAGO | TOTAL SHEETS 491 | SHEET NO. 438 |
| CONTRACT NO. 64515 | | | ILLINOIS FED. AID PROJECT | |