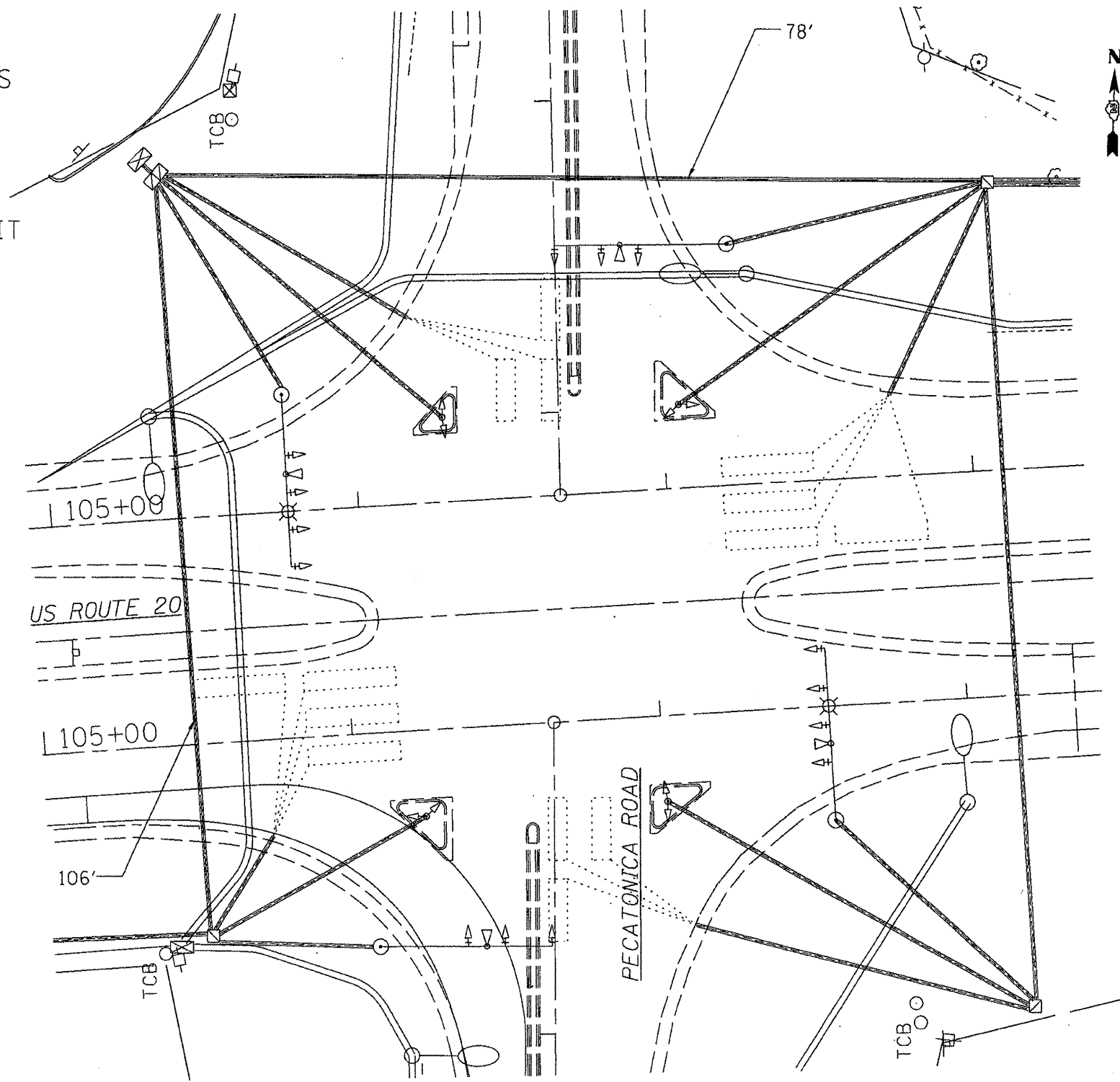


NOTE:

1. MODIFY 14 EXISTING MAST ARM MOUNTED BACKPLATES
2. INSTALL FAR ADVANCE DETECTION
3. REMOVE FLASHING BEACONS AND CONTROLLERS AND REPLACE WITH SOLAR POWER FLASHING BEACONS ON EXISTING SIGN POSTS
4. REMOVE SERVICE AND REPLACE WITH A METERED SERVICE AT CONTROLLER
5. INSTALL DETECTOR WIRE IN EXISTING CONDUIT



FILE NAME =	USER NAME = h11k1	DESIGNED -	REVISED -
\\d2s3rv2\users\HILLKLV\Projects\us 20	plc and winn 2011\64115.dgn	DRAWN -	REVISED -
	PLOT SCALE = 42.485' / in.	CHECKED -	REVISED -
	PLOT DATE = Wed Mar 14 10:36:01 2012	DATE -	REVISED -

STATE OF ILLINOIS  
DEPARTMENT OF TRANSPORTATION

US 20 AT PECATONICA RD  
PLAN SHEET

SCALE: \_\_\_\_\_ SHEET NO. \_\_\_\_\_ OF \_\_\_\_\_ SHEETS STA. \_\_\_\_\_ TO STA. \_\_\_\_\_

F.A.P. RTE.	SECTION	COUNTY	TOTAL SHEETS	SHEET NO.
301	(17, 40M-3)	WINNEBAGO	19	4
CONTRACT NO. 64B15			ILLINOIS FED. AID PROJECT	