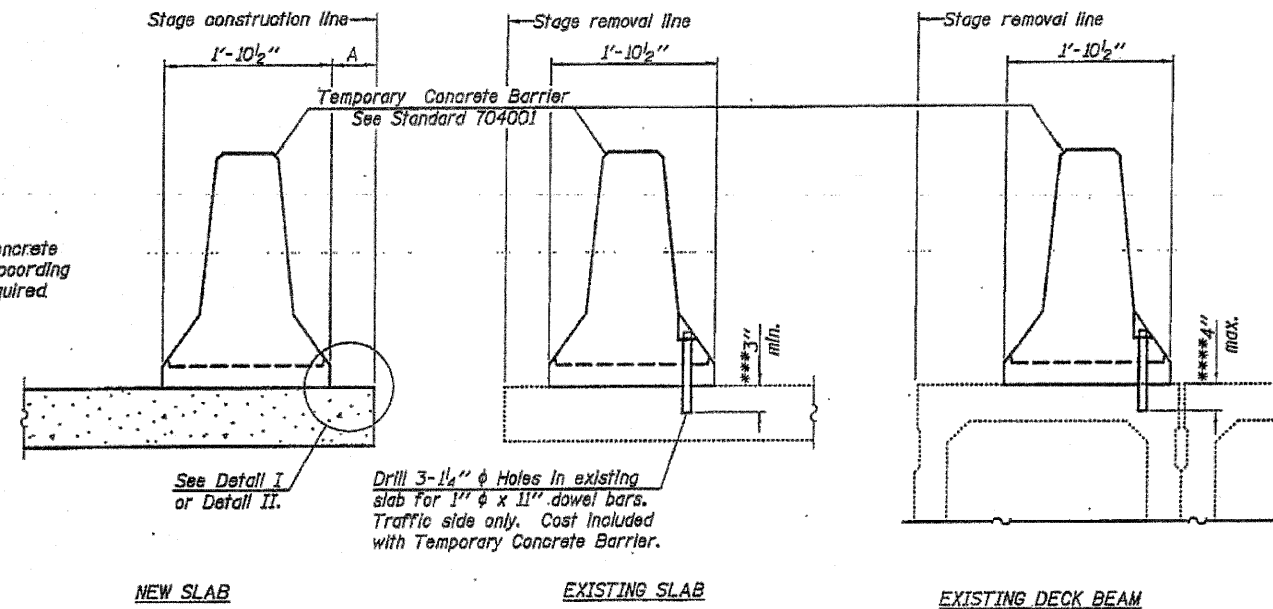


When "A" is 3'-6" or less, the temporary concrete barrier shall be anchored to the new slab according to Detail I or Detail II. No anchorage is required when "A" is greater than 3'-6".



SECTIONS THRU SLAB OR DECK BEAM

NOTES

Detail I - With Bar Splice or Couplers:
Connect one (1) 1" x 7" x "W" steel P to the top layer of couplers with 2-5/8" φ bolts screwed to coupler at approximate C of each barrier panel.

Detail II - With Extended Reinforcement Bars:
Connect one (1) 1" x 7" x "W" steel P to the concrete slab or concrete wearing surface with 2-5/8" φ Expansion Anchors or cast in place Inserts spaced between the top layer of reinforcement at approximate C of each barrier panel.

Cost of anchorage is included with Temporary Concrete Barrier. The 1" x 7" x "W" plate shall not be removed until stage II construction forms and all reinforcement bars are in place and the concrete is ready to be placed.

*** Dimension shown is minimum required embedment into concrete. If hot-mix asphalt wearing surface is present, minimum embedment shall be in addition to wearing surface depth.

**** If existing deck beam is to remain in place after stage construction, embedment shall only be into wearing surface and not into existing deck beam concrete.

FILE NAME =	USER NAME = 10003	DESIGNED -	REVISED -	STATE OF ILLINOIS DEPARTMENT OF TRANSPORTATION	TEMPORARY CONCRETE BARRIER FOR STAGE CONSTRUCTION SN 004-0013	F.A. RTE.	SECTION	COUNTY	TOTAL SHEET	
C:\Joint Repair_64H75\64H75_Plan.dgn		DRAWN -	REVISED -			1042	(1B, 1BR, 1BR-2R)M	BOONE	31	23
PLOT SCALE = 1/8" = 1' / 1"		CHECKED -	REVISED -			SHEET NO. OF SHEETS		CONTRACT NO. 64H75		
PLOT DATE = Thu Apr 05 08:49:18 2012		DATE -	REVISED -			SCALE: _____	SHEET NO. _____ OF _____ SHEETS	STA. _____ TO STA. _____	FED. ROAD DIST. NO. [ILLINOIS] FED. AID PROJECT	