

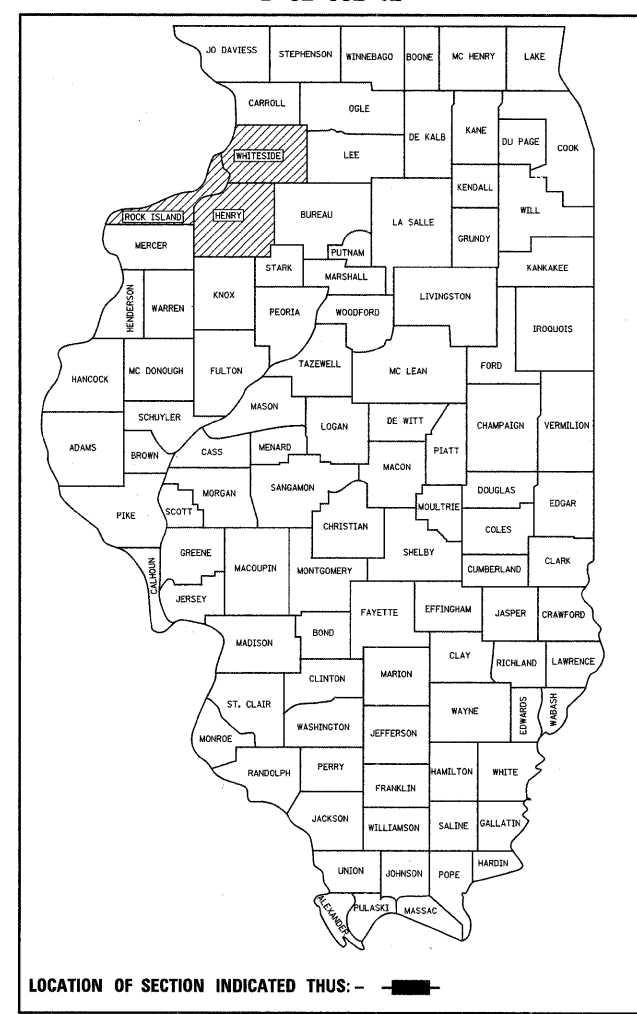
PROJECT ENGINEER - REBECCA MARRUFFO

SQUAD LEADER - PAUL DREZEN (815) - 284 - 5915

F.A.I. RTE.	SECTION	COUNTY	TOTAL SHEETS	SHEET NO.
*	D2 SAFETY 2012-2	**	151	1
FED. ROAD DIST. NO.		ILLINOIS	CONTRACT NO. 64H77	

* 74, 80, 88 & 280
 ** HENRY / ROCK ISLAND / WHITESIDE

D-92-052-12

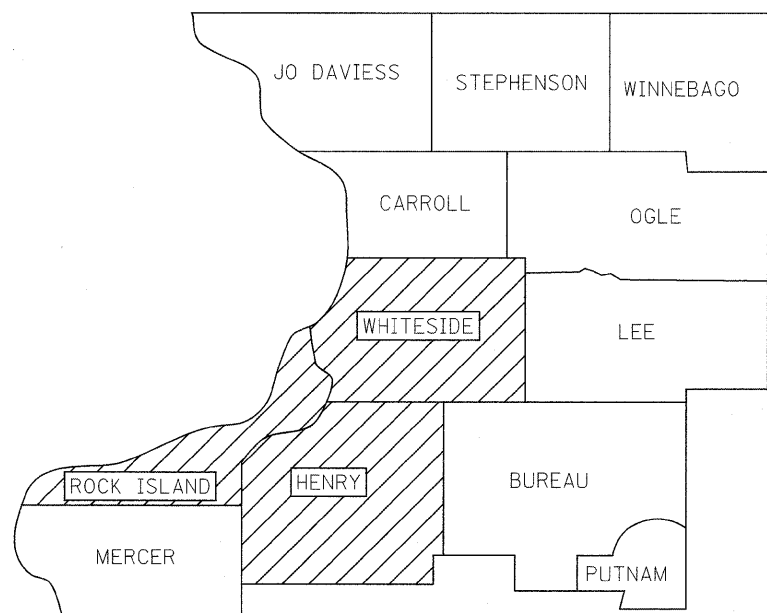


STATE OF ILLINOIS
 DEPARTMENT OF TRANSPORTATION
 DIVISION OF HIGHWAYS

PROPOSED
 HIGHWAY PLANS

FAI ROUTE 74,80, 88 & 280 (VARIOUS LOCATIONS)
 SECTION D2 SAFETY 2012-2
 PROJECT: HSIP-000S(903)

HENRY, ROCK ISLAND AND WHITESIDE COUNTIES
 C-92-134-12

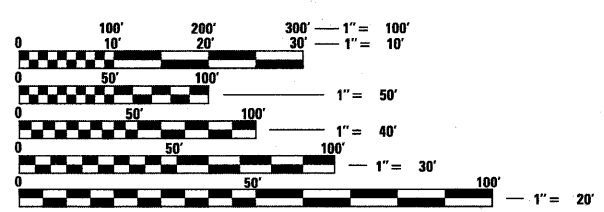


INDEX

- 1 COVER SHEET
- 2 - 3 SUMMARY OF QUANTITIES
- 4 GENERAL NOTES
- 5 TYPICAL SECTIONS
- 6 - 17 SCHEDULE OF QUANTITIES
- 18 EARTHWORK SCHEDULE
- 19 - 30 EXISTING HORIZONTAL & VERTICAL CONTROL
- 31 - 33 LOCATION MAP DETAILS
- 34 - 93 PLAN & PROFILE
- 94 - 114 BRIDGE PIER CRASH WALL DETAILS
- 115 DELINEATOR AND POST ORIENTATION (37.4)
- 116 TRAFFIC CONTROL TYPICAL WEAVE (39.1)
- 117 - 118 TRAFFIC BARRIER TERMINAL, TYPE 6B (SPECIAL) (90.1)
- 119 - 151 CROSS SECTIONS

STATE STANDARDS

- 280001-06 TEMPORARY EROSIONS CONTROL SYSTEMS
- 542526-03 INLET BOX TYPE 24 (600) F
- 601001-04 SUBSURFACE DRAINS
- 601101-01 CONCRETE HEADWALL FOR PIPE DRAIN
- 602401-03 MANHOLE TYPE A
- 604036-02 GRATE TYPE 8
- 630001-10 STEEL PLATE BEAM GUARDRAIL
- 630301-05 SHOULDER WIDENING FOR TYPE 1 (SPECIAL) GUARDRAIL TERMINALS
- 631011-08 TRAFFIC BARRIER TERMINAL, TYPE 2
- 635001-01 DELINEATORS
- 635006-03 REFLECTOR AND TERMINAL MARKER PLACEMENT
- 635011-02 REFLECTOR MARKER AND MOUNTING DETAILS
- 643001 SAND MODULE IMPACT ATTENUATORS
- 701101-02 OFF-RD OPERATIONS, MULTILANE, 15' (4.5 M) TO 24" (600 mm) FROM PAVEMENT EDGE
- 701106-02 OFF-RD OPERATIONS, MULTILANE, MORE THAN 15' (4.5 M) AWAY
- 701400-05 APPROACH TO LANE CLOSURE, FREEWAY/EXPRESSWAY
- 701406-06 LANE CLOSURE, FREEWAY/EXPRESSWAY, DAY OPERATIONS ONLY
- 701411-08 LANE CLOSURE, MULTILANE, AT ENTRANCE OR EXIT RAMP, FOR SPEEDS ≥ 45 MPH
- 701426-04 LANE CLOSURE, MULTILANE, INTERMITTANT OR MOVING OPER., SPEEDS ≥ 45 mph
- 701456-02 PARTIAL EXIT RAMP CLOSURE FREEWAY/EXPRESSWAY
- 701901-02 TRAFFIC CONTROL DEVICES
- 000001-04 STANDARD SYMBOLS, ABBREVIATIONS, & PATTERNS
- 001001 AREAS OF REINFORCEMENT BARS
- 001006 DECIMAL OF AN INCH & OF A FOOT



FULL SIZE PLANS HAVE BEEN PREPARED USING STANDARD ENGINEERING SCALES. REDUCED SIZED PLANS WILL NOT CONFORM TO STANDARD SCALES. IN MAKING MEASUREMENTS ON REDUCED PLANS, THE ABOVE SCALES MAY BE USED.

J.U.L.I.E.
 JOINT UTILITY LOCATION INFORMATION FOR EXCAVATION
 1-800-892-0123
 OR 811

CONTRACT NO. 64H77

GROSS LENGTH = 373,375 FT. = 70.72 MILE
 NET LENGTH = 12,418 FT. = 2.35 MILE

STATE OF ILLINOIS
 DEPARTMENT OF TRANSPORTATION
 DIVISION OF HIGHWAYS

SUBMITTED May 1 20 12
Eric S. Thukuba
 DEPUTY DIRECTOR OF HIGHWAYS, REGION ENGINEER

May 11 20 12
John D. Baccanelli P.E. Ia
 Acting ENGINEER OF DESIGN AND ENVIRONMENT

May 11 20 12
William R. Frey Ia
 Acting DIRECTOR OF HIGHWAYS, CHIEF ENGINEER

PRINTED BY THE AUTHORITY
 OF THE STATE OF ILLINOIS