

F.A.P. RTE.	SECTION	COUNTY	TOTAL SHEETS	SHEET NO.
557	(128)I	DEKALB	7	1
		ILLINOIS	CONTRACT NO. 66C12	

STATE OF ILLINOIS
DEPARTMENT OF TRANSPORTATION
DIVISION OF HIGHWAYS
**PROPOSED
HIGHWAY PLANS**

FAP ROUTE 557 (IL 72)
SECTION (128)I

**MICRO-SURFACING (JOINT REPAIR)
DEKALB COUNTY**

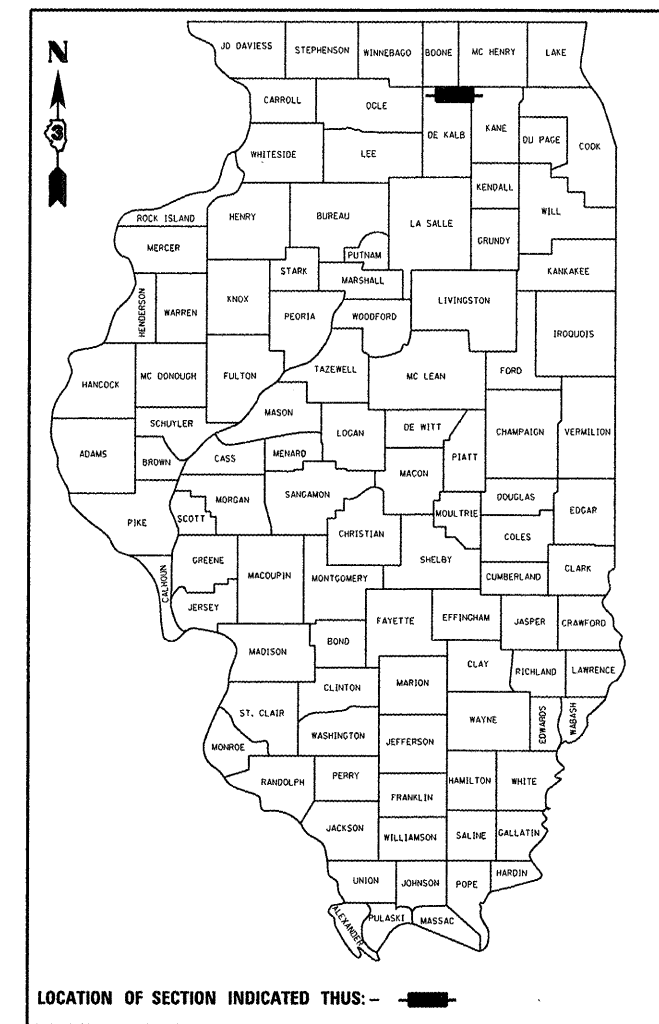
C-93-104-12

- INDEX OF SHEETS
- 1 COVER SHEET
 - 2 GENERAL NOTES
 - 3 SUMMARY OF QUANTITIES
 - 4 TYPICAL SECTION
 - 5 SCHEDULES
 - 6 LOCATION MAP
 - 7 DETAIL

LIST OF ILLINOIS DOT HIGHWAY STANDARDS

000001-06	STANDARD SYMBOLS, ABBREVIATIONS AND PATTERNS
001006	DECIMAL OF AN INCH AND OF A FOOT
701201-04	LANE CLOSURE, 2L, 2W, DAY ONLY, FOR SPEEDS ≥ 45 MPH
701311-03	LANE CLOSURE, 2L, 2W, MOVING OPERATIONS - DAY ONLY
701336-06	LANE CLOSURE, 2L, 2W, WORK AREAS IN SERIES, FOR SPEEDS ≥ 45 MPH
701901-02	TRAFFIC CONTROL DEVICES
780001-03	TYPICAL PAVEMENT MARKINGS

D-93-053-12



**FUNCTIONAL CLASSIFICATION
OTHER PRINCIPAL ARTERIAL**

2011 ADT = 5300
P.V. = 89.62% S.U. = 4.72% M.U. = 5.66%

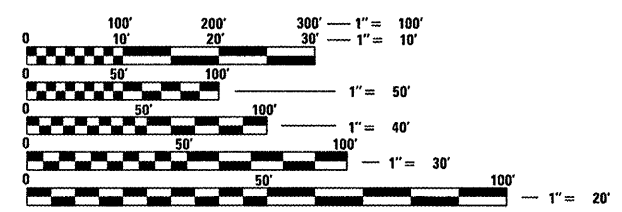
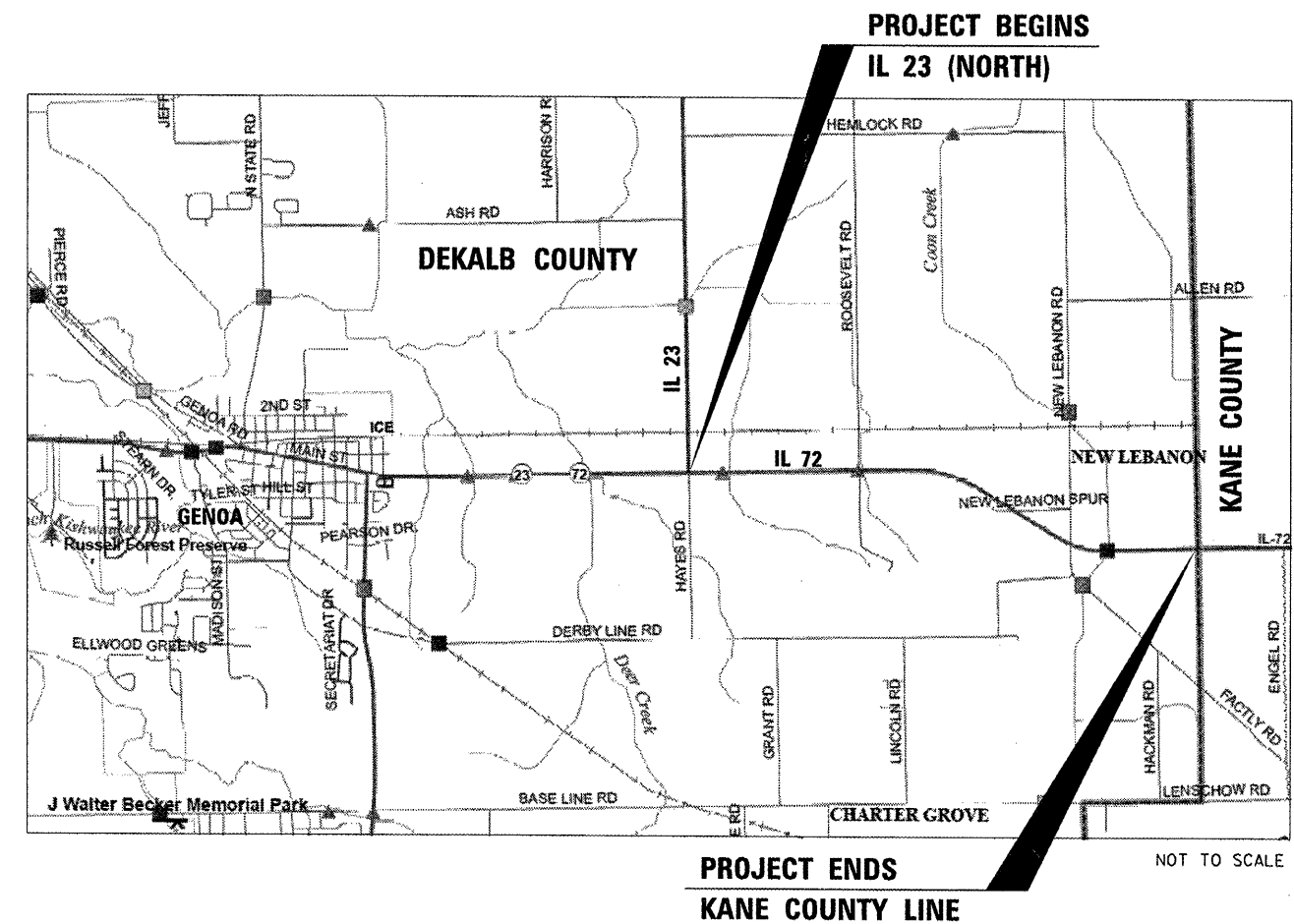
STATE OF ILLINOIS
DEPARTMENT OF TRANSPORTATION
DIVISION OF HIGHWAYS

SUBMITTED March 27 20 12
Eric S. Therkildsen
DEPUTY DIRECTOR OF HIGHWAYS, REGION ENGINEER

May 11 20 12
John D. Baranzelli, P.E.
ENGINEER OF DESIGN AND ENVIRONMENT

May 11 20 12
William R. Frey, Jr.
DIRECTOR OF HIGHWAYS, CHIEF ENGINEER

**PRINTED BY THE AUTHORITY
OF THE STATE OF ILLINOIS**



FULL SIZE PLANS HAVE BEEN PREPARED USING STANDARD ENGINEERING SCALES. REDUCED SIZED PLANS WILL NOT CONFORM TO STANDARD SCALES. IN MAKING MEASUREMENTS ON REDUCED PLANS, THE ABOVE SCALES MAY BE USED.

J.U.L.I.E.
JOINT UTILITY LOCATION INFORMATION FOR EXCAVATION
1-800-892-0123
OR 811

DISTRICT 3 NO. (815) 434-6131
PROJECT ENGINEER: CRAIG REED, P.E.
UNIT CHIEF: RUTH SCHWANKE
TOWNSHIP(S): GENOA
CONTRACT NO. 66C12

GROSS LENGTH = 16,579.2 FT. = 3.14 MILES
NET LENGTH = 13,939.2 FT. = 2.64 MILES