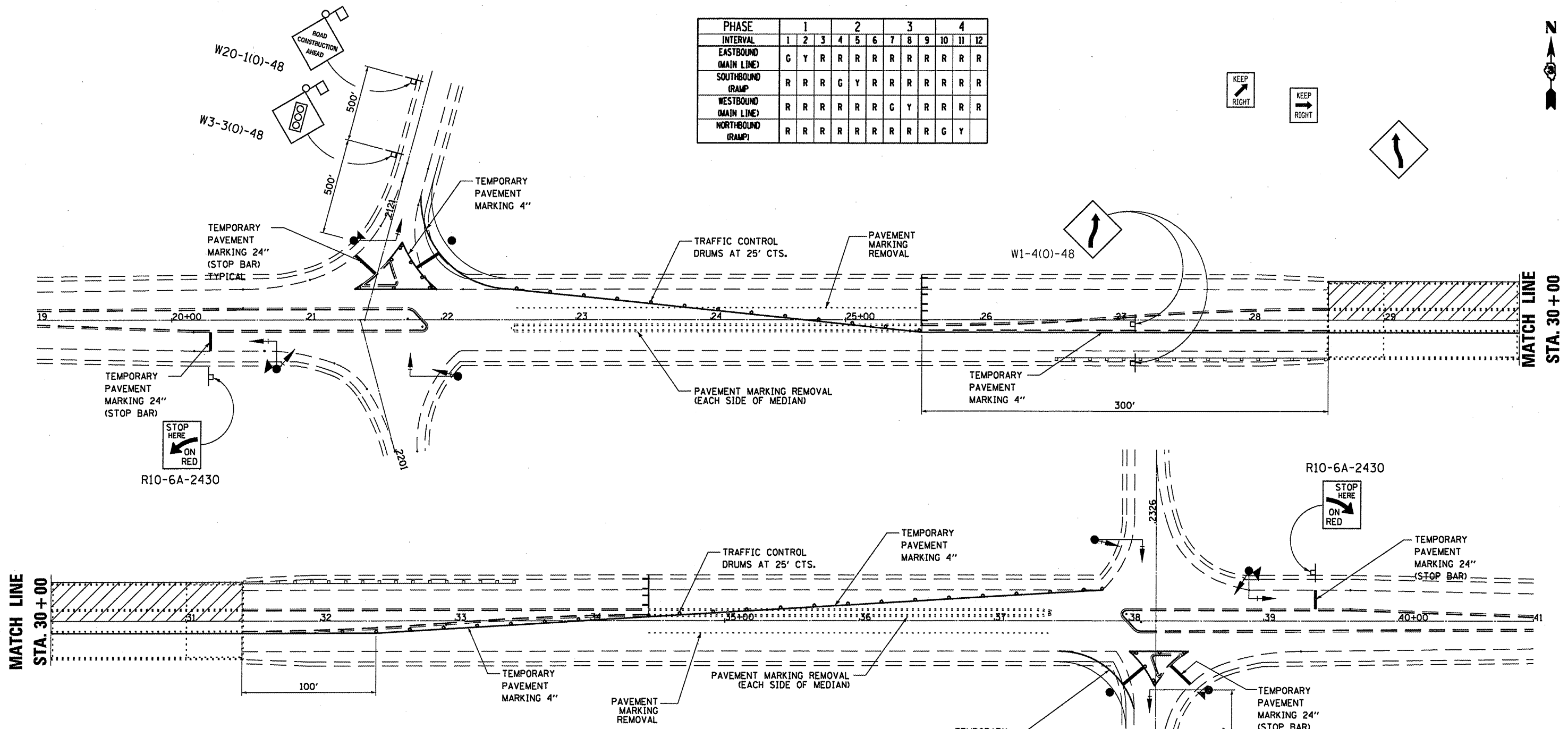


PHASE	1			2			3			4		
INTERVAL	1	2	3	4	5	6	7	8	9	10	11	12
EASTBOUND (MAIN LINE)	G	Y	R	R	R	R	R	R	R	R	R	R
SOUTHBOUND (RAMP)	R	R	R	G	Y	R	R	R	R	R	R	R
WESTBOUND (MAIN LINE)	R	R	R	R	R	R	R	G	Y	R	R	R
NORTHBOUND (RAMP)	R	R	R	R	R	R	R	R	R	R	G	Y



SYMBOLS

- WORK AREA
- SIGN
- TYPE III BARRICADE
- UTILITY POLE
- TRAFFIC SIGNAL WITH BACK PLATE
- MICROWAVE DETECTOR
- DRUM WITH STEADY BURNING BI-DIRECTIONAL LIGHT

GENERAL NOTES

This Detail is used where, at any time, any vehicle, equipment, workers, or their activities will encroach on one lane of a bridge. Traffic signals and a positive barrier are required.

See traffic Control and Protection, Standard 701321 for advanced signing details.

Traffic signals shall be operational only when all traffic controls are in place. When traffic signals are not in operation, flaggers shall be used and traffic control shall conform to Standard 701201.

Existing or temporary pavement markings shall be on both sides of open lane from stop bar to stop bar.

FILE NAME =	USER NAME = carpentardj	DESIGNED - RLW	REVISED -	STATE OF ILLINOIS DEPARTMENT OF TRANSPORTATION	TRAFFIC CONTROL STAGING DETAILS FOR STAGE I CONSTRUCTION	F.A.S. RTE. =	SECTION	COUNTY	TOTAL SHEETS	SHEET NO.	
os:\pwr\work\pwidot\carpentardj\d0299254	D366C16-shit-details.dgn	DRAWN - RLW	REVISED -			2247	106-1HB-211-2	BUREAU	22	7	
PLOT SCALE = 1/8" = 1'-0"	CHECKED -	REVISED -	SCALE:			SHEET 1 OF 2 SHEETS	STA.	TO STA.	ILLINOIS FED. AID PROJECT		
PLOT DATE = 4/5/2012	DATE -	REVISED -	CONTRACT NO. 66C16								