

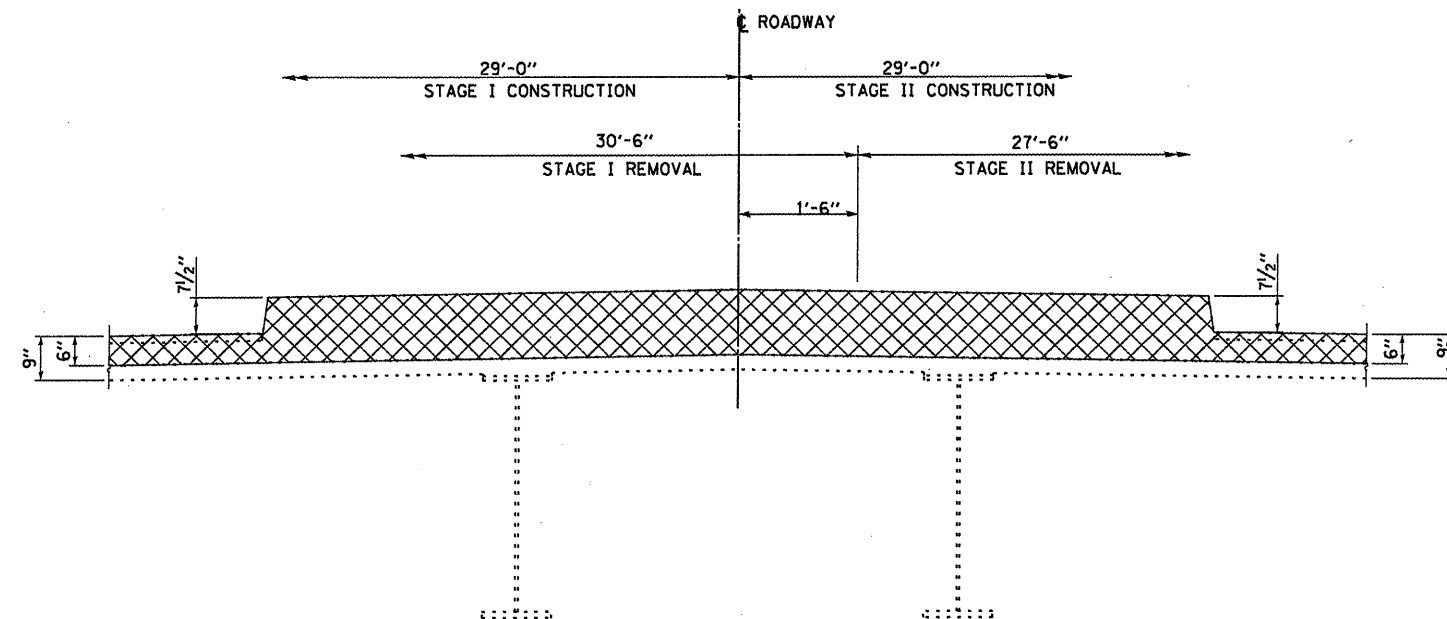
**SECTION AT  
W. APPR. BENT**

**SECTION AT W. ABUT.**

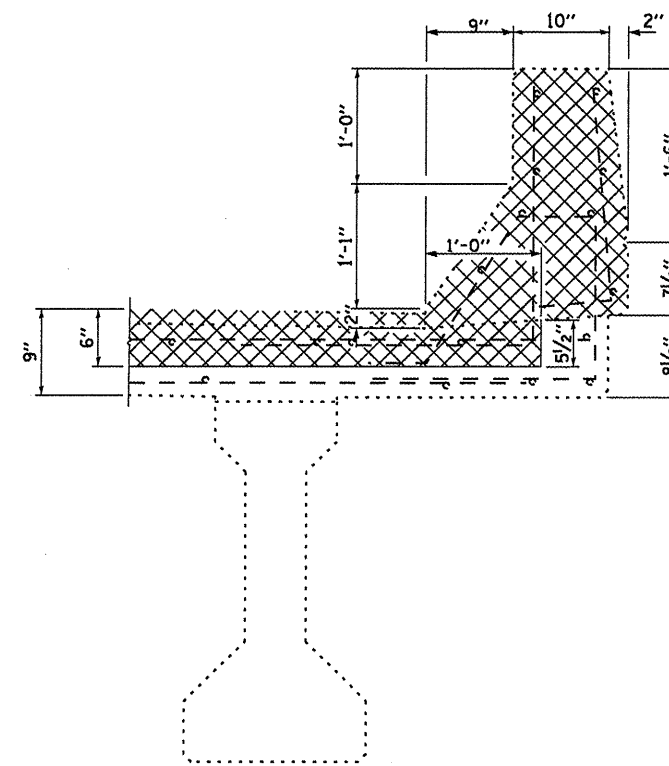
**SECTION AT E. ABUT.**

**SECTION AT  
E. APPR. BENT**

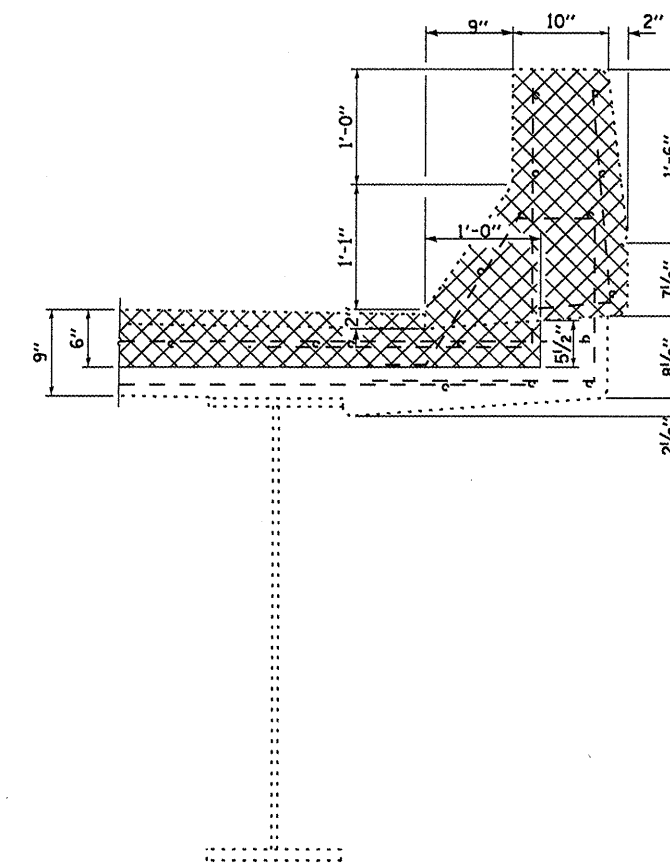
- CONCRETE REMOVAL & REPLACEMENT**  
**EXPANSION JOINT REMOVAL & REPLACEMENT**
- HMA SURFACE REMOVAL & REPLACEMENT**  
**WATERPROOFING REMOVAL & REPLACEMENT**



**SECTION AT MEDIAN  
AT EXPANSION JOINTS  
LOOKING EAST**



**CURB SECTION  
SPANS 1 & 4  
AT EXPANSION JOINTS**



**CURB SECTION  
SPANS 2 & 3  
AT EXPANSION JOINTS**

FILE NAME =	USER NAME = carpernterdj	DESIGNED - RLW	REVISED -	<b>STATE OF ILLINOIS DEPARTMENT OF TRANSPORTATION</b>	<b>EXISTING SUPERSTRUCTURE DETAILS FOR STRUCTURE NO. 006-0069</b>	F.A.S. RTE. 2247	SECTION 106-1HB-211-2	COUNTY BUREAU	TOTAL SHEETS 22	SHEET NO. 13
ci:\pw_work\pwidot\carpernterdj\d0299254\366C16-shr-details.dgn	DRAWN - RLW	REVISED -	SCALE: SHEET 3 OF 12 SHEETS STA. 28+98.21 TO STA. 31+43.29			CONTRACT NO. 66C16		ILLINOIS FED. AID PROJECT		
PLOT SCALE = 100.0000' / 1"	CHECKED -	REVISED -								
PLOT DATE = 4/5/2012	DATE -	REVISED -								