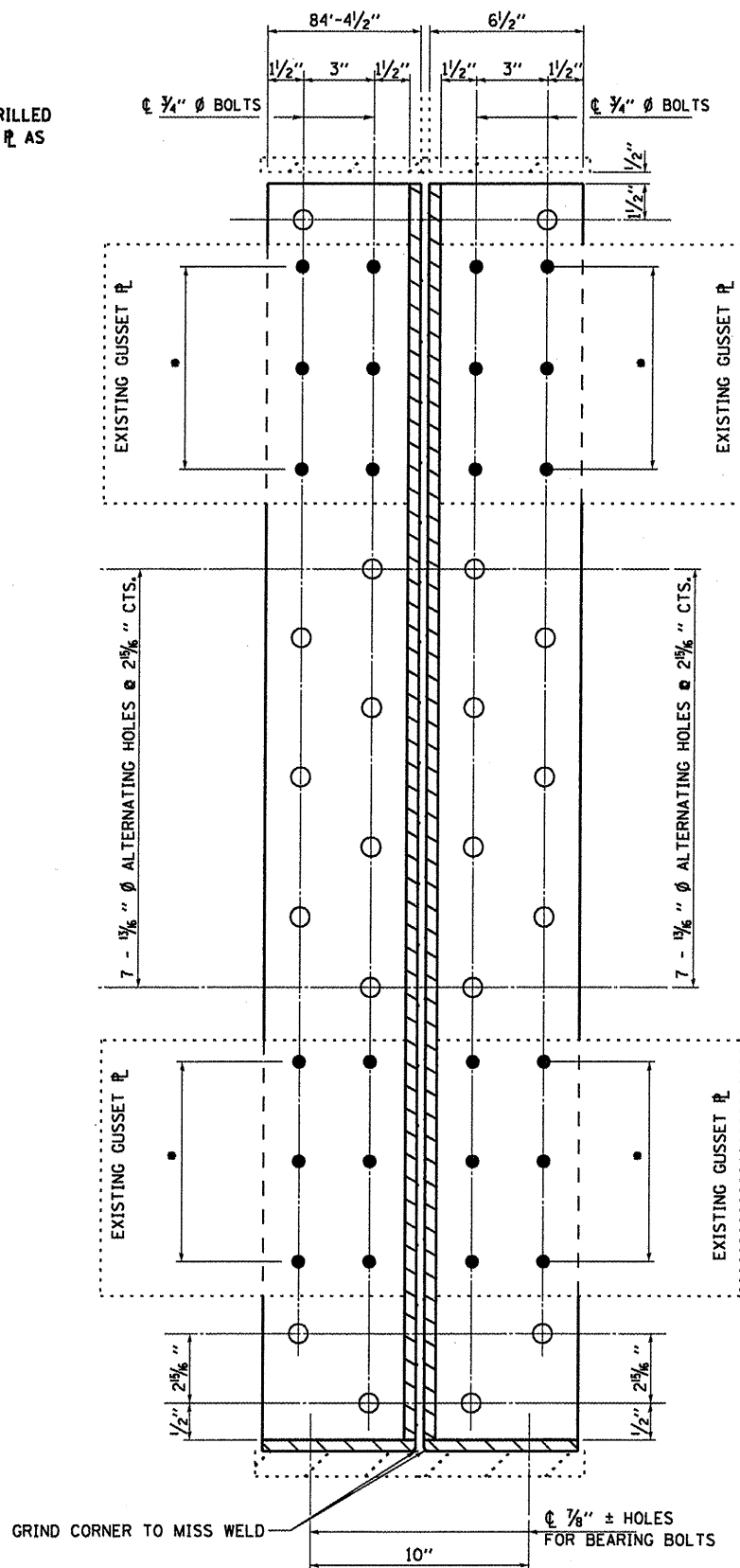
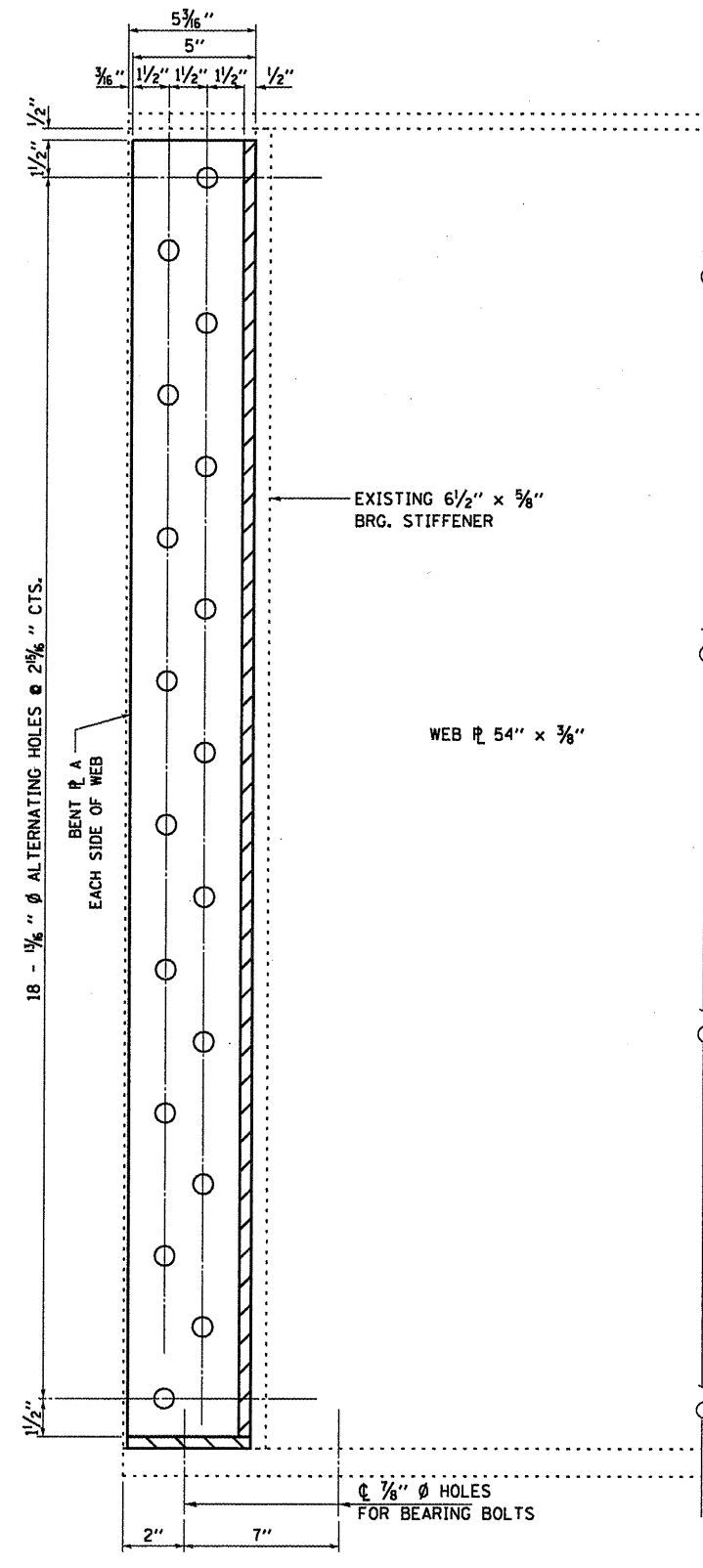


END GIRDER ELEVATION
EXTERIOR GIRDER

• HOLES TO BE FIELD DRILLED
USE EXISTING GUSSET PLATE AS
TEMPLATE.



END GIRDER ELEVATION
INTERIOR GIRDER



SIDE GIRDER ELEVATION

BILL OF MATERIAL

Item	Unit	Total
STRUCTURAL STEEL REPAIR	Pound	2400

FILE NAME =	USER NAME = carpentardj	DESIGNED - RLW	REVISED -
c:\pvc\work\pvidot\carpentardj\d0299254\	D366C16-shd-detaills.dgn	DRAWN - RLW	REVISED -
	PLOT SCALE = 100.0000' / 1"	CHECKED -	REVISED -
	PLOT DATE = 4/5/2012	DATE -	REVISED -

STATE OF ILLINOIS
DEPARTMENT OF TRANSPORTATION

STRUCTURAL STEEL REPAIR DETAILS
FOR STRUCTURE NO. 006-0069

SCALE: SHEET 9 OF 12 SHEETS STA. 28+98.21 TO STA. 31+43.29

F.A.S. RTE. 2247	SECTION 106-1HB-211-2	COUNTY BUREAU	TOTAL SHEETS 22	SHEET NO. 19
CONTRACT NO. 66C16			ILLINOIS FED. AID PROJECT	