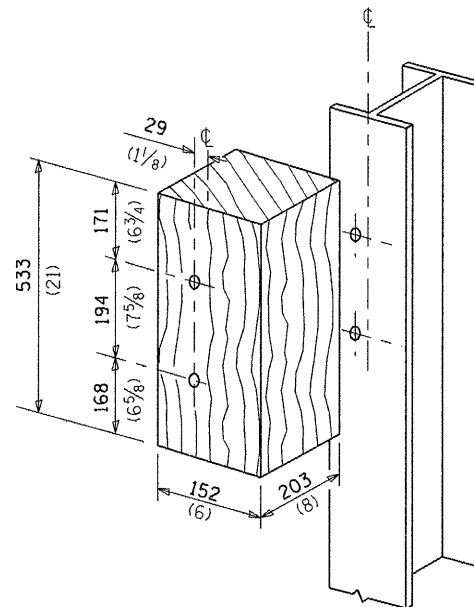
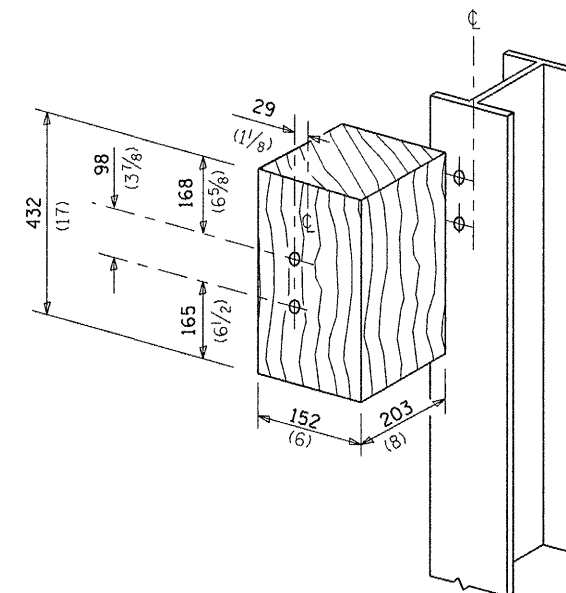


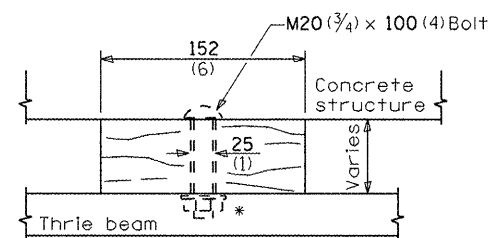
MODIFIED THICKNESS WOOD BLOCKOUT DETAIL



POSTS 1-11 WOOD BLOCKOUT DETAIL

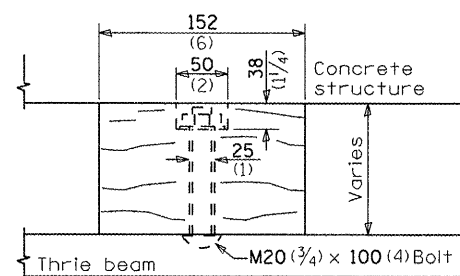


POST 12 WOOD BLOCKOUT DETAIL

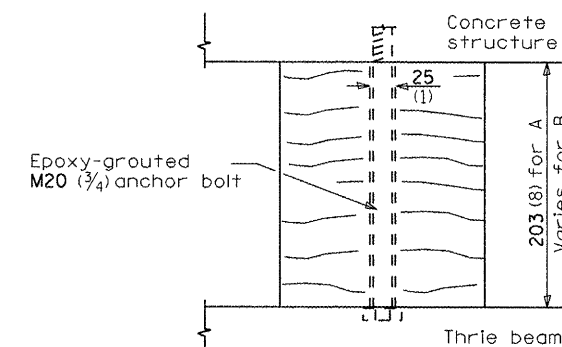


WOOD BLOCKOUT D

Bolt to thrie beam with M20 (3/4) by 100 (4) bolt, washer & nut. Reverse direction of insertion. *



WOOD BLOCKOUT C



WOOD BLOCKOUT A & B

FILE NAME =	USER NAME = quigleyml	DESIGNED -	REVISED -
as:\pw_work\p\dot\quigleyml\d0300564\036618-sht-details.dgn		DRAWN -	REVISED -
	PLOT SCALE = 100.0000 ' / 1"	CHECKED -	REVISED -
	PLOT DATE = 3/26/2012	DATE -	REVISED -

**STATE OF ILLINOIS
DEPARTMENT OF TRANSPORTATION**

**PRE-MGS EFFECTIVE 4-1-06
TRAFFIC BARRIER TERMINAL, TYPE 6B
STANDARD 631033-01**

SCALE: SHEET NO. OF SHEETS STA. TO STA.

• D-3 HIGHWAY DAMAGE REPAIR 2013				
F.A. RTE.	SECTION	COUNTY	TOTAL SHEETS	SHEET NO.
VAR.	•	VAR.	37	34
FED. ROAD DIST. NO.			ILLINOIS FED. AID PROJECT	
			CONTRACT NO. 66C18	