

# PROPOSED HIGHWAY PLANS

FAI ROUTE 57 (I-57)  
SECTION (38-5HB)BP

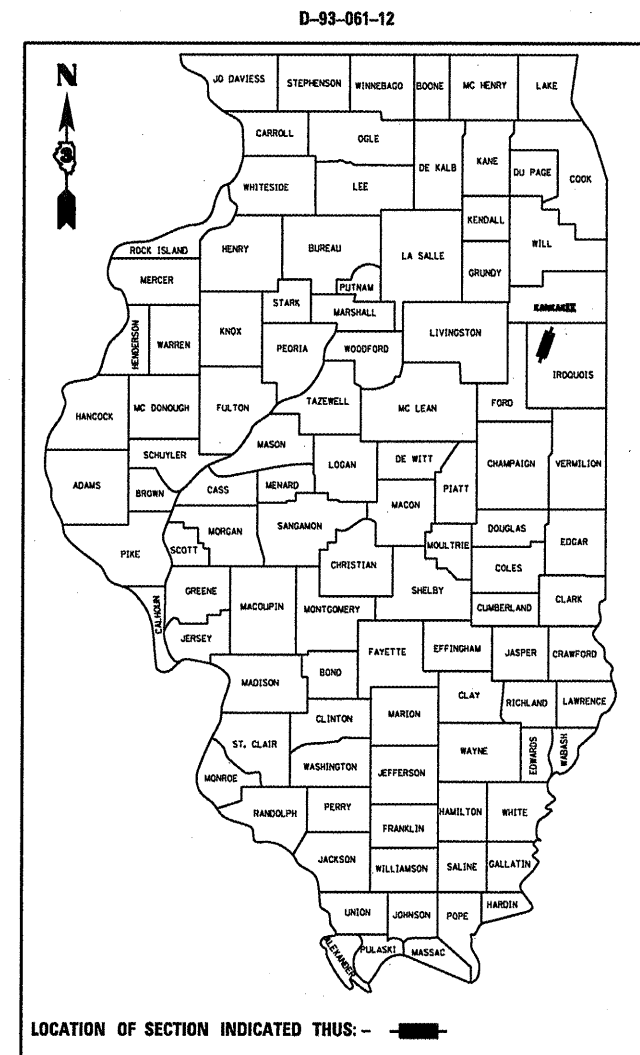
BRIDGE PAINTING  
IROQUOIS COUNTY  
SN 038-0086  
CARRYING COUNTY HIGHWAY 28  
OVER FAI 57 (I-57) 7.8 MILES SOUTH OF IL 116  
C-93-112-12

F.A.I. RTE.	SECTION	COUNTY	TOTAL SHEETS	SHEET NO.
57	(38-5HB)BP	IROQUOIS	10	1
		ILLINOIS	CONTRACT NO. 66C20	

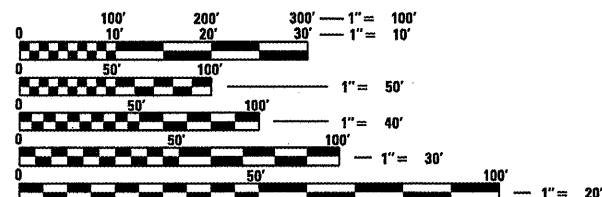
1. COVER SHEET
2. GENERAL NOTES
3. SUMMARY OF QUANTITIES
4. TYPICAL SECTION
5. SCHEDULES
6. TRAFFIC CONTROL AND PROTECTION, STANDARD 701400 (SPECIAL)
7. TRAFFIC CONTROL AND PROTECTION, STANDARD 701402 (SPECIAL)
8. TYPICAL PAVEMENT MARKING
- 9 - 10. STRUCTURE PLANS

STANDARDS

- 000001-06 STANDARD SYMBOLS, ABBREVIATIONS AND PATTERNS
- 001006 DECIMAL OF AN INCH AND OF A FOOT
- 701101-02 OFF-ROAD OPERATIONS MULTILANE, 15' (4.5 m) TO 24' (600 mm) FROM PAVEMENT EDGE
- 701201-04 LANE CLOSURE, 2L, 2W, DAY ONLY FOR SPEEDS ≥ 45 MPH
- 701901-02 TRAFFIC CONTROL DEVICES
- 704001-07 TEMPORARY CONCRETE BARRIER



LOCATION OF SECTION INDICATED THUS: - [black rectangle] -



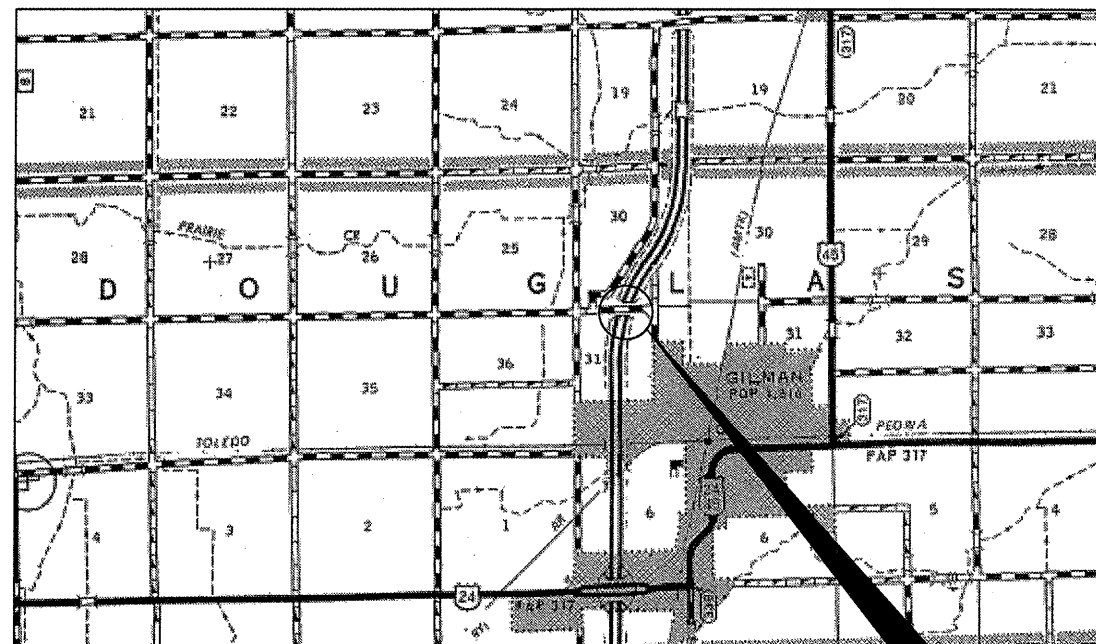
FULL SIZE PLANS HAVE BEEN PREPARED USING STANDARD ENGINEERING SCALES. REDUCED SIZED PLANS WILL NOT CONFORM TO STANDARD SCALES. IN MAKING MEASUREMENTS ON REDUCED PLANS, THE ABOVE SCALES MAY BE USED.

J.U.L.I.E.  
JOINT UTILITY LOCATION INFORMATION FOR EXCAVATION  
1-800-892-0123  
OR 811

DISTRICT 3 NO: (815) 434-6131

PROJECT ENGINEER: JOE KANNEL P.E.  
UNIT CHIEF: RON WOODSHANK  
TOWNSHIP: DOUGLAS

CONTRACT NO. 66C20



PROJECT LOCATION  
SN. 038-0086

GROSS LENGTH = 238.25 FT. = 0.045 MILE  
NET LENGTH = 238.25 FT. = 0.045 MILE

LOCATION MAP  
NOT TO SCALE

FUNCTIONAL CLASSIFICATION  
RURAL INTERSTATE  
2011 ADT = 18200  
P.V. = 74.18% S.U. = 4.67% M.U. = 21.15%

STATE OF ILLINOIS  
DEPARTMENT OF TRANSPORTATION  
DIVISION OF HIGHWAYS

SUBMITTED 3-30 2012  
Eric S. Thekkumkara  
DEPUTY DIRECTOR OF HIGHWAYS, REGION ENGINEER

May 11 2012  
John D. Baranzelli, P.E.  
ENGINEER OF DESIGN AND ENVIRONMENT

May 11 2012  
William R. Frey, Jr.  
DIRECTOR OF HIGHWAYS, CHIEF ENGINEER

PRINTED BY THE AUTHORITY  
OF THE STATE OF ILLINOIS

## GENERAL NOTES

PLAN DIMENSIONS AND DETAILS RELATIVE TO THE EXISTING PLANS ARE SUBJECT TO ROUTINE VARIATIONS. THE CONTRACTOR SHALL FIELD VERIFY EXISTING DIMENSIONS AND DETAILS AFFECTING NEW CONSTRUCTION AND MAKE NECESSARY APPROVED ADJUSTMENTS PRIOR TO CONSTRUCTION OR ORDERING OF MATERIALS. SUCH VARIATIONS SHALL NOT BE CAUSE FOR ADDITIONAL COMPENSATION FOR A CHANGE IN THE SCOPE OF THE WORK. HOWEVER, THE CONTRACTOR WILL BE PAID FOR THE QUANTITY FURNISHED BASED UPON THE UNIT BID PRICE FOR THE WORK.

THE CONTRACTOR SHALL BE RESPONSIBLE FOR PROTECTING UTILITY PROPERTY FROM CONSTRUCTION OPERATIONS AS OUTLINED IN ARTICLE 107.31 OF THE STANDARD SPECIFICATIONS. THE "JULIE" NUMBER IS 1-800-892-0123. A MINIMUM OF FORTY-EIGHT (48) HOURS ADVANCE NOTICE IS REQUIRED.

FOR STABILIZATION, ALL TYPE III BARRICADES SHALL REQUIRE A MINIMUM OF FOUR SAND BAGS PER BARRICADE.

ANY REFERENCE TO A STANDARD IN THESE PLANS SHALL BE INTERPRETED TO MEAN THE EDITION AS INDICATED BY THE SUBNUMBER SHOWN IN THE LIST OF STANDARDS OR THE COPY INCLUDED IN THESE PLANS.

THE CONTRACTOR SHALL BE REQUIRED TO SECURE WASTE CONTAINERS THAT REMAIN ON THE JOB SITE. THIS WILL ENTAIL THAT ALL WASTE CONTAINERS CAN NOT BE MOVED OR OPENED DURING NON-WORKING HOURS.

WORKING DAYS SHALL BE CHARGED UNTIL THE CONTRACTOR/SUBCONTRACTOR LICENSED TO DISPOSE OF LEAD PAINT RESIDUE HAS REMOVED THE WASTE MATERIAL FROM THE JOB SITE ACCORDING TO ALL FEDERAL, STATE AND LOCAL LAWS AND ORDINANCES.

THE EXISTING STRUCTURAL STEEL ON SN 038-0086 CONTAINS LEAD. THE CONTRACTOR SHOULD TAKE APPROPRIATE PRECAUTIONS TO DEAL WITH THE PRESENCE OF LEAD PAINT ON THIS PROJECT.

THE SSPC-QP1 AND SSPC-QP2 "PAINTING CONTRACTOR CERTIFICATIONS" WILL BE REQUIRED FOR THIS PROJECT.

## COMMITMENTS

### SN 038-0086

CLEANING AND PAINTING OF THE EXISTING STRUCTURAL STEEL SHALL BE AS SPECIFIED IN THE SPECIAL PROVISION FOR "CLEANING AND PAINTING EXISTING STEEL STRUCTURES". ALL EXTERIOR AND INTERIOR SURFACES OF THE BEAMS, DIAPHRAGMS, BEARING ASSEMBLIES AND ALL OTHER ASSOCIATED STEEL COMPONENTS SHALL BE CLEANED PER "NEAR WHITE BLAST CLEANING - SSPC-SP10". ALL EXISTING STEEL SHALL BE PAINTED ACCORDING TO THE REQUIREMENTS OF "PAINT SYSTEM 1 - OZ/E/U". THE COLOR OF THE FINAL FINISH COAT FOR ALL INTERIOR STEEL SURFACES SHALL BE "GRAY, MUNSELL NO. 5B 7/1". THE COLOR OF THE FINAL FINISH COAT FOR THE EXTERIOR AND THE BOTTOM OF THE BOTTOM FLANGE AND BEARING ASSEMBLIES OF FASCIA BEAMS SHALL BE "GREEN, MUNSELL NO. 7.5G 4/8".

DATE: 3-30-12

PREPARED BY:

*Don Beonil*

DISTRICT STUDIES & PLANS ENGINEER

EXAMINED BY:

*Herb Gray*

DISTRICT CONSTRUCTION ENGINEER

*Wayne J. Phillips*

DISTRICT MATERIALS ENGINEER

*James A. Buckner*

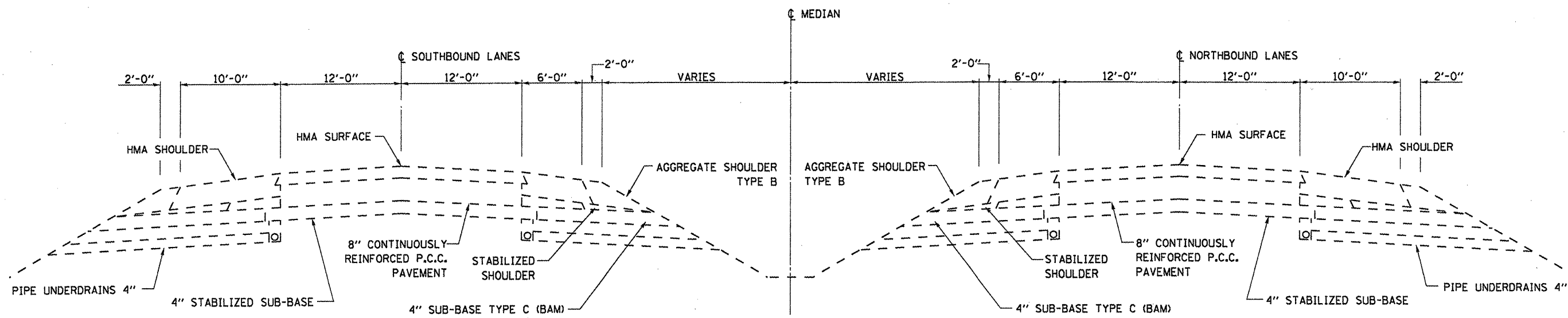
DISTRICT OPERATIONS ENGINEER

FILE NAME =	USER NAME = spurlockd	DESIGNED - DBS	REVISED -	<b>STATE OF ILLINOIS DEPARTMENT OF TRANSPORTATION</b>	<b>GENERAL NOTES</b>	F.A.I. RTE.	SECTION	COUNTY	TOTAL SHEETS	SHEET NO.
ci:\pw\work\p\p\p\spurlockd\0382743\0366C20-sht-details.dgn	DRAWN - DBS	REVISED -	57			(38-HB)BP	IROQUOIS	10	2	
PLOT SCALE = 100.0000' / 1" =	CHECKED -	REVISED -	CONTRACT NO. 66C20							
PLOT DATE = 3/30/2012	DATE - MARCH 2012	REVISED -	ILLINOIS FED. AID PROJECT							
					SCALE:	SHEET NO. 1 OF 1 SHEETS	STA.	TO STA.		

CODE NO.	ITEM	UNIT	TOTAL QUANTY	CONSTR. CODE
				STATE
				100%
				STRUCTURE
				0014
				RURAL
50606701	CLEANING AND PAINTING STRUCTURAL STEEL, LOCATION 1	L SUM	1	1
67100100	MOBILIZATION	L SUM	1	1
70100450	TRAFFIC CONTROL AND PROTECTION, STANDARD 701201	L SUM	1	1
70400100	TEMPORARY CONCRETE BARRIER	FOOT	226	226
70400200	RELOCATE TEMPORARY CONCRETE BARRIER	FOOT	678	678
* 78009006	MODIFIED URETHANE PAVEMENT MARKING - LINE 6"	FOOT	366	366
78300100	PAVEMENT MARKING REMOVAL	SQ FT	184	184
X0326880	MESSAGE BOARD VEHICLE DRIVER	HOUR	120	120
X0326907	PORTABLE, VEHICLE MOUNTED, CHANGEABLE MESSAGE BOARD	CAL MO	1	1
X5067501	BRIDGE CLEANING AND PAINTING WARRANTY NUMBER 1	L SUM	1	1
X7010208	TRAFFIC CONTROL AND PROTECTION, 701402 (SPECIAL)	EACH	1	1
Z0007101	CONTAINMENT AND DISPOSAL OF LEAD PAINT CLEANING RESIDUES NO. 1	L SUM	1	1
Z0030250	IMPACT ATTENUATORS, TEMPORARY (NON- REDIRECTIVE), TEST LEVEL 3	EACH	1	1
Z0030350	IMPACT ATTENUATORS, RELOCATE (NON- REDIRECTIVE), TEST LEVEL 3	EACH	3	3

\* SPECIALITY ITEM

FILE NAME =	USER NAME = spurlockd	DESIGNED - DBS	REVISED -	<b>STATE OF ILLINOIS DEPARTMENT OF TRANSPORTATION</b>	<b>SUMMARY OF QUANTITIES</b>	F.A.I. RTE.	SECTION	COUNTY	TOTAL SHEETS	SHEET NO.
ci:\pw\work\pwidot\spurlockd\0302743\0366C20-sht-details.dgn	DRAWN - DBS	REVISED -	57			(38-5H)BP	IROOLOIS	10	3	
PLOT SCALE = 100.0000' / in.	CHECKED -	REVISED -	CONTRACT NO. 66C20							
PLOT DATE = 3/30/2012	DATE - MARCH 2012	REVISED -	SCALE:			SHEET NO. 1 OF 1 SHEETS	STA. TO STA.	ILLINOIS FED. AID PROJECT		

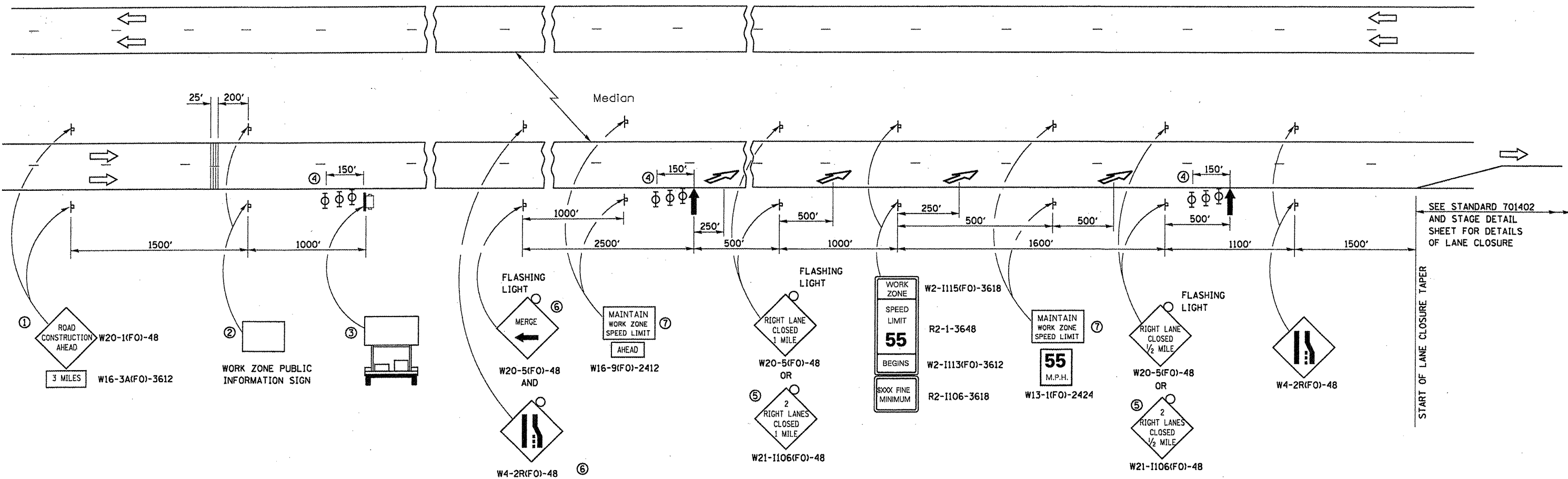


**TYPICAL SECTION**

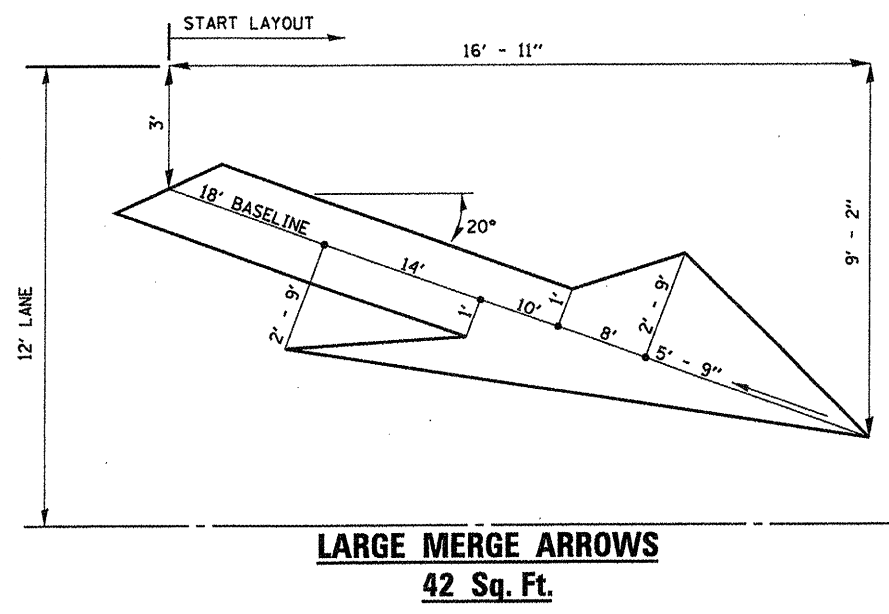
FILE NAME = c:\pwwork\pwwork\spurlock\d\382743\0366C20-eh-t-detail.dgn	USER NAME = spurlockd	DESIGNED - DBS	REVISED -	<b>STATE OF ILLINOIS DEPARTMENT OF TRANSPORTATION</b>	<b>TYPICAL SECTION</b>	F.A.I. RTE.	SECTION	COUNTY	TOTAL SHEETS	SHEET NO.
	PLOT SCALE = 1/8" = 1' / in.	DRAWN - DBS	REVISED -			57	(38-5HB)BP	IROQUOIS	10	4
	PLOT DATE = 3/30/2012	CHECKED -	REVISED -			CONTRACT NO. 66C20				
	DATE - MARCH 2012	REVISI	REVISI			ILLINOIS FED. AID PROJECT				
					SCALE:	SHEET NO. 1 OF 1 SHEETS		STA.	TO STA.	

SCHEDULE - TRAFFIC CONTROL					
LOCATION	TRAFFIC CONTROL & PROTECTION, (701402) SPECIAL	TEMPORARY CONCRETE BARRIER	RELOCATE TEMPORARY CONCRETE BARRIER	IMPACT ATTENUATORS, TEMPORARY (NON-REDIRECTIVE) TEST LEVEL 3	IMPACT ATTENUATORS, RELOCATE (NON-REDIRECTIVE) TEST LEVEL 3
	EACH	FOOT	FOOT	EACH	EACH
SN 038-0086 (SB)	0.5	226	226	1	1
SN 38-0086 (NB)	0.5		452		2
TOTAL	1	226	678	1	3

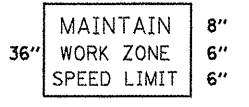
SCHEDULE - PAVEMENT MARKING		
LOCATION	PAVEMENT MARKING REMOVAL	MODIFIED URETHANE PAVEMENT MARKING - LINE 6"
	SQ FT	FOOT
SN 038-0086 (SB)	92	183
SN 38-0086 (NB)	92	183
TOTAL	184	366



SEE STANDARD 701402 AND STAGE DETAIL SHEET FOR DETAILS OF LANE CLOSURE



- ① THE ROAD CONSTRUCTION AHEAD SIGN SHALL BE LOCATED 3 MILES IN ADVANCE OF THE PROJECT LIMITS.
- ② THE MESSAGE AND SIZE OF THE WORK ZONE PUBLIC INFORMATION SIGN SHALL BE AS SPECIFIED BY THE DEPARTMENT.
- ③ TO BE PLACED IN THE MEDIAN WHEN FEASIBLE. THE MESSAGE BOARD SHALL BE USED TO DISPLAY STATUS OF LANES WITHIN THE PROJECT. THE PRIMARY MESSAGES SHALL BE:  
 "RIGHT LANE CLOSED" / " x MILES AHEAD"  
 "LEFT LANE CLOSED" / " x MILES AHEAD"  
 "ALL LANES OPEN"
- ④ THREE, TYPE II BARRICADES, DRUMS, OR VERTICAL BARRICADES AT 50' CENTERS.
- ⑤ THIS SIGN SHALL BE USED WHEN 2 LANES ARE CLOSED.
- ⑥ WHEN THE LEFT LANE IS CLOSED, SWITCH THESE TWO SIGNS AND THE DIRECTION OF THE MERGE ARROW.
- ⑦ 48"x36" FLUORESCENT ORANGE SIGN WITH BLACK LETTERS.



- ↑ ARROW BOARD
- ☐ PORTABLE CHANGEABLE MESSAGE SIGN
- ⊥ SIGN
- ⊕ TYPE II BARRICADE, DRUM, OR VERTICAL BARRICADE WITH MONODIRECTIONAL FLASHING LIGHT
- ↘ LANE DROP ARROW - SEE STANDARD 780001
- ▨ TEMPORARY THERMOPLASTIC RUMBLE STRIPS

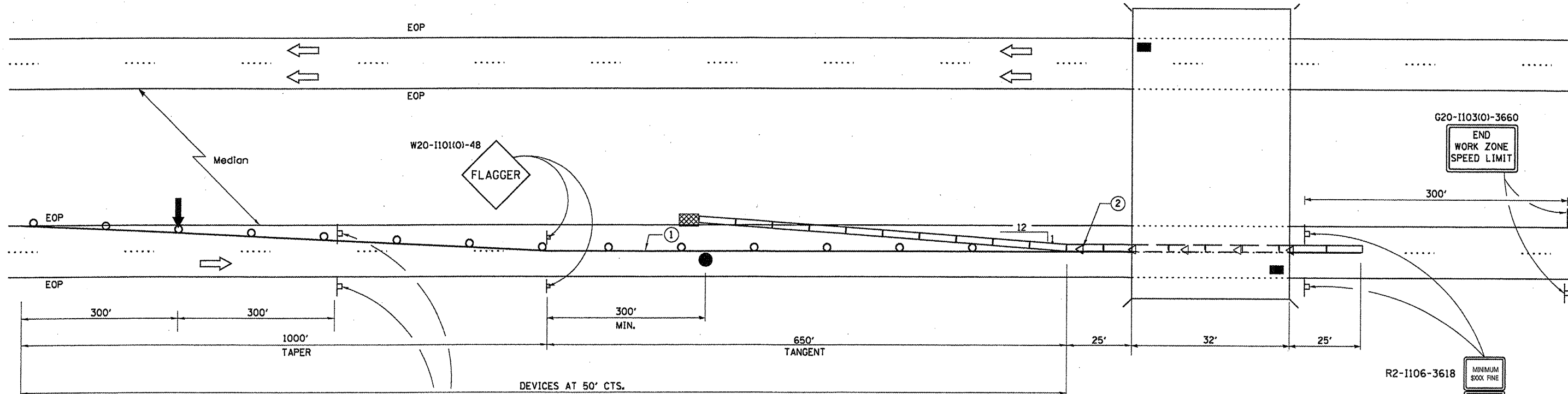
**GENERAL NOTE:**

THIS STANDARD IS USED WHERE AT ANY TIME A LANE IS CLOSED ON A FREEWAY/EXPRESSWAY.

WHEN THE LEFT LANE IS CLOSED, LEFT LANE CLOSED SIGNS SHALL BE SUBSTITUTED FOR THE RIGHT LANE CLOSED SIGNS.

THE FIRST TWO SIGNS AND THE MESSAGE BOARD ARE STATIONARY. THE OTHER SIGNS AND ARROWBOARDS SHALL BE MOVED AS NECESSARY TO MAINTAIN THE REQUIRED DISTANCE FROM THE START OF THE LANE CLOSURE TAPER(S).

SEE SPECIAL PROVISIONS.



SEE STANDARD 701400 (SPECIAL) FOR APPROACH LANE CLOSURE SIGNING

- R2-1106-3618 MINIMUM \$300 FINE
- W2-1113(0)-3612 BEGINS
- R2-1-3648 45 SPEED LIMIT
- W2-1115(0)-3618 WORK ZONE

- R2-1106-3618 MINIMUM \$300 FINE
- W2-1113(0)-3612 BEGINS
- R2-1-3648 55 SPEED LIMIT
- W2-1115(0)-3618 WORK ZONE

**SYMBOLS**

- ↑ ARROW BOARD
- ▨ WORK AREA
- ⊥ SIGN
- TRAFFIC CONTROL DRUM WITH STEADY BURN MONODIRECTIONAL LIGHT
- ▬ TEMPORARY CONCRETE BARRIER
- ◁ MONODIRECTIONAL BARRIER WALL/GUARDRAIL MARKER
- ▩ IMPACT ATTENUATOR
- AIR MONITORS
- FLAGGER

**GENERAL NOTES**

THIS STANDARD IS USED WHERE AT ANY TIME ANY VEHICLE, EQUIPMENT, WORKERS OR THEIR ACTIVITIES WILL ENCROACH ON THE PAVEMENT OR ON THE SHOULDER WITHIN 24 INCHES OF THE EDGE OF PAVEMENT FOR DAYLIGHT OPERATION EXCEEDING ONE DAY AND WHERE TEMPORARY CONCRETE BARRIER IS UTILIZED.

THIS STANDARD MUST BE USED IN COMBINATION WITH STANDARD 701400 (SPECIAL).

WHEN WORK IS BEING PERFORMED IN THE LEFT LANE, THE SET UP WOULD BE A MIRROR IMAGE TO WHAT IS SHOWN.

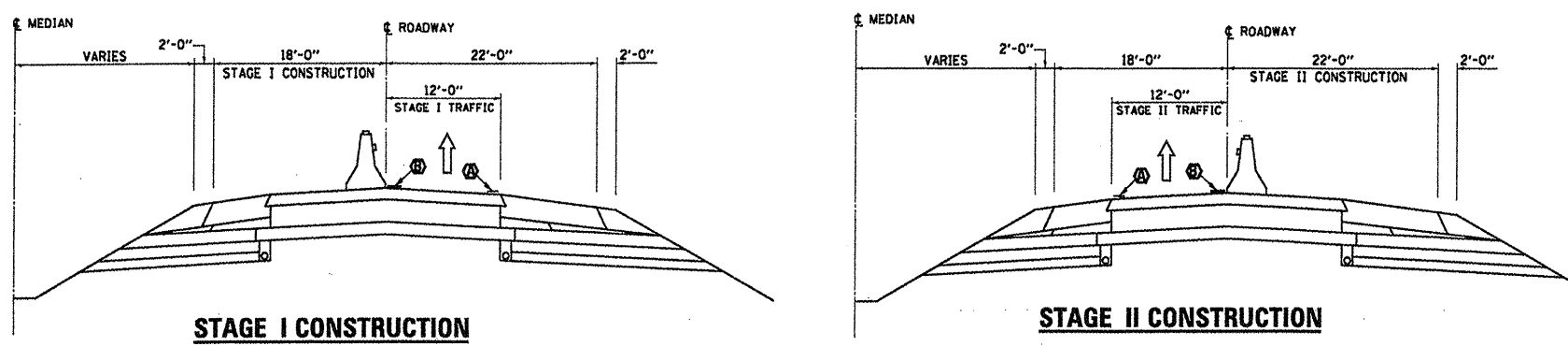
FLAGGER, FLAGGER SIGNS AND SPEED LIMIT SIGNS SHALL BE REQUIRED WHENEVER TEMPORARY CONCRETE BARRIER IS NOT IN PLACE. WHEN TEMPORARY CONCRETE BARRIER IS IN PLACE, THE FLAGGER SIGNS SHALL BE REMOVED OR COVERED AND THE FLAGGER NOT REQUIRED.

TEMPORARY CONCRETE BARRIER SHALL BE ACCORDING TO STANDARD 704001.

CALCULATE L AS FOLLOWS:

FORMULA 45 MPH OR MORE  
 $L = (W)(S)$   
 W = WIDTH OF OFFSET IN FEET  
 S = NORMAL POSTED SPEED

- ① TEMPORARY PAVEMENT MARKING TAPE OR EXISTING PAVEMENT MARKING SHALL BE PLACED THROUGHOUT THE TAPER AND ALONGSIDE THE WORK AREA. THE RIGHT EDGE LINE SHALL BE WHITE AND THE LEFT EDGE LINE SHALL BE YELLOW.
- ② BARRIER WALL/GUARDRAIL MARKERS AT 25'. MARKERS ON RIGHT SHALL BE CRYSTAL AND MARKERS ON LEFT SHALL BE AMBER. COST INCLUDED WITH TEMPORARY CONCRETE BARRIER.



NOTE: TRAFFIC CONTROL AND PROTECTION FOR TWO-LANE ROADS SHALL BE ACCORDING TO STANDARD 701201.

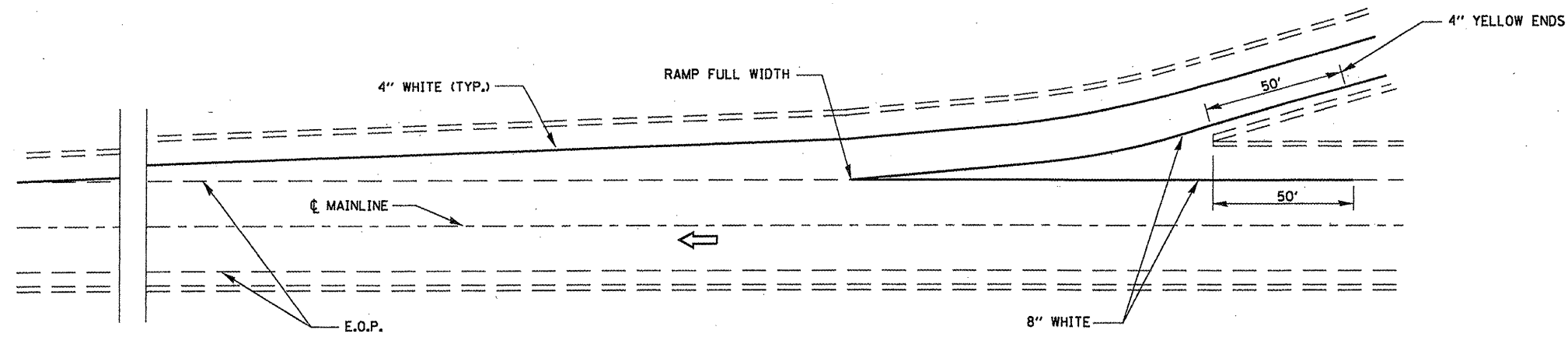
- Ⓐ EXISTING PAVEMENT MARKING
- Ⓑ TEMPORARY PAVEMENT MARKING

FILE NAME =	USER NAME = spurlookd	DESIGNED - DBS	REVISED -
en:\pwwork\pwwork\spurlookd\0302743\036620-ahd-details.dgn		DRAWN - DBS	REVISED -
PLOT SCALE = 100.0000' / 1"		CHECKED -	REVISED -
PLOT DATE = 3/28/2012		DATE - MARCH 2012	REVISED -

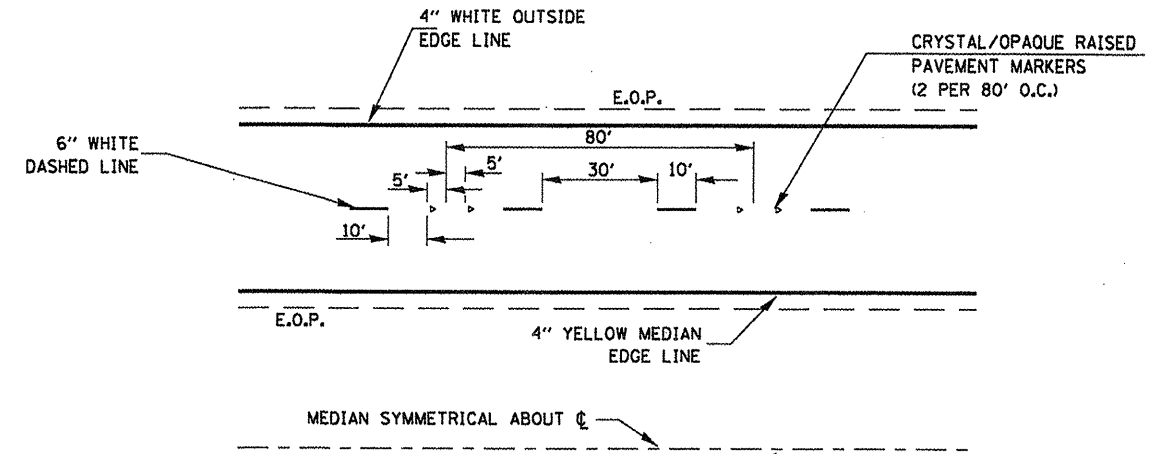
STATE OF ILLINOIS  
 DEPARTMENT OF TRANSPORTATION

TRAFFIC CONTROL AND PROTECTION,  
 STANDARD 701402 (SPECIAL)

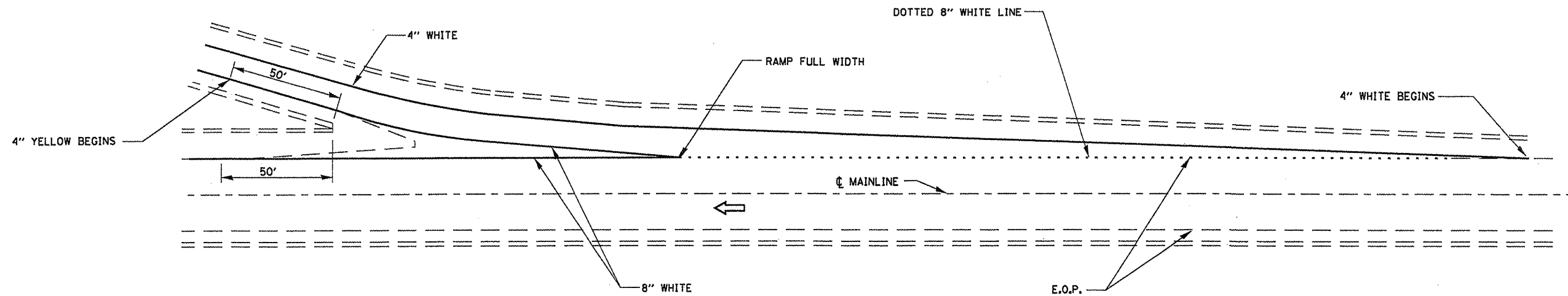
F.A.I. RTE.	SECTION	COUNTY	TOTAL SHEETS	SHEET NO.
57	(38-5HB)BP	IROQUOIS	10	7
CONTRACT NO. 66C20			ILLINOIS FED. AID PROJECT	



**TYPICAL PAVEMENT MARKING FOR ENTRANCE RAMP TERMINALS**



**TYPICAL PAVEMENT MARKINGS**



**TYPICAL PAVEMENT MARKINGS FOR EXIT RAMP TERMINALS**

FILE NAME =	USER NAME = spurlockd	DESIGNED - RLW	REVISED -
c:\pwwork\spurlockd\0302743\03	66C20-ehd-details.dgn	DRAWN - RLW	REVISED -
	PLOT SCALE = 100.0000' / 1" =	CHECKED -	REVISED -
	PLOT DATE = 3/30/2012	DATE - MARCH 2012	REVISED -

STATE OF ILLINOIS  
DEPARTMENT OF TRANSPORTATION

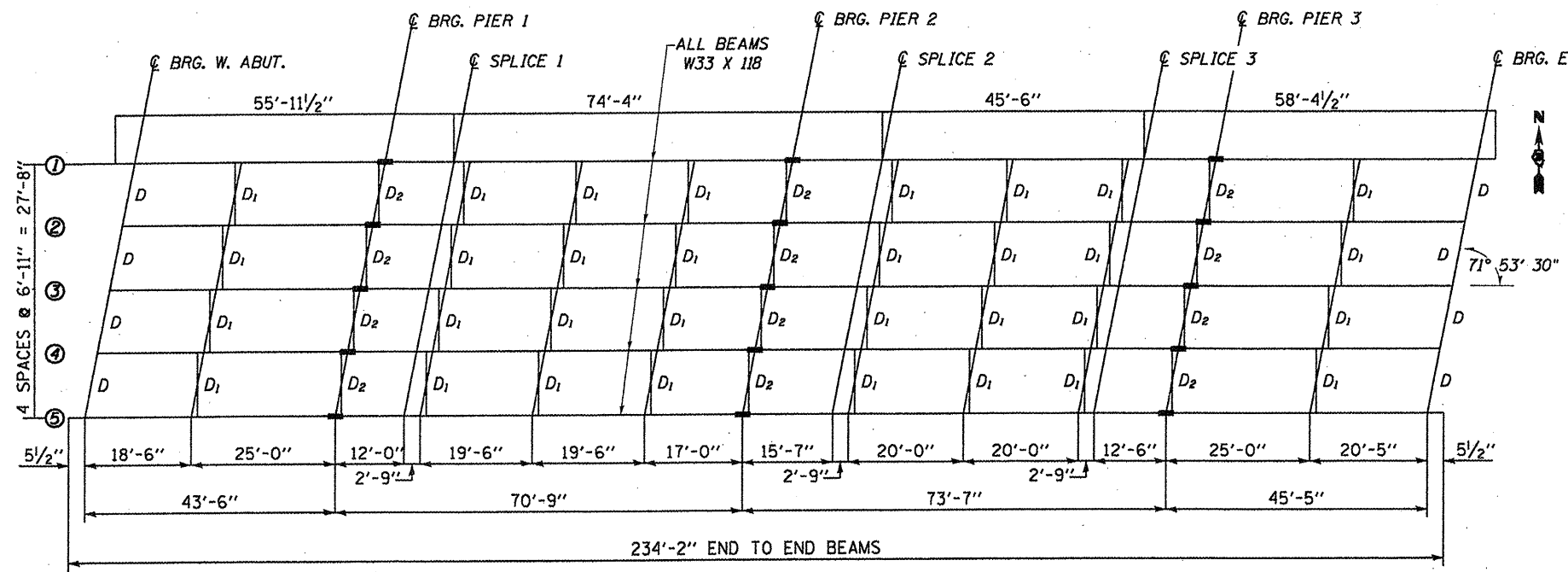
**TYPICAL PAVEMENT MARKING**

SCALE: SHEET NO. 1 OF 1 SHEETS STA. TO STA.

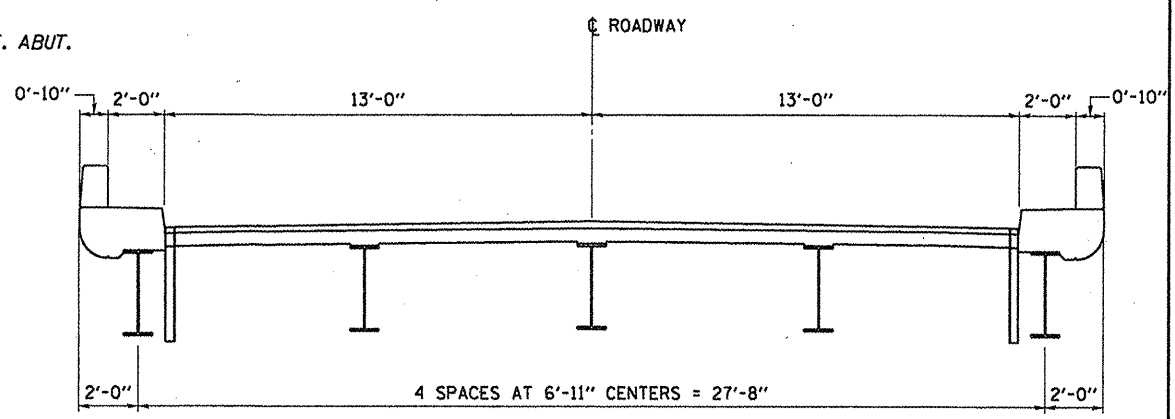
F.A.I. RTE. 57	SECTION (38-5HB)BP	COUNTY IROQUOIS	TOTAL SHEETS 10	SHEET NO. 8
CONTRACT NO. 66C20				ILLINOIS FED. AID PROJECT



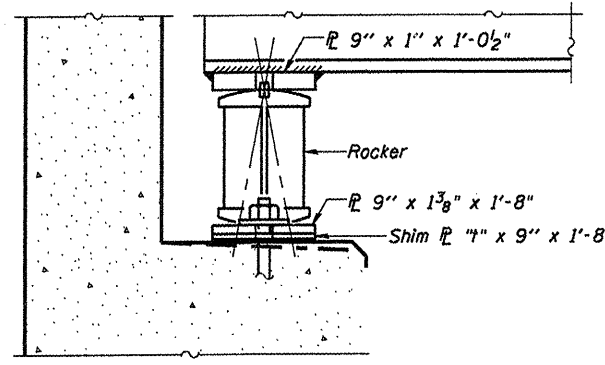




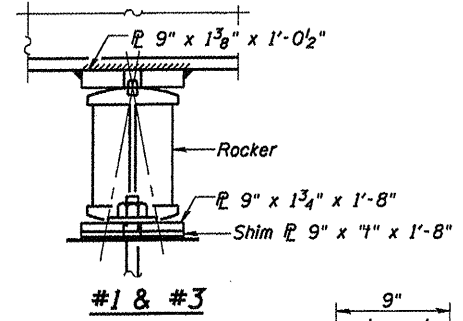
**STEEL FRAMING PLAN**



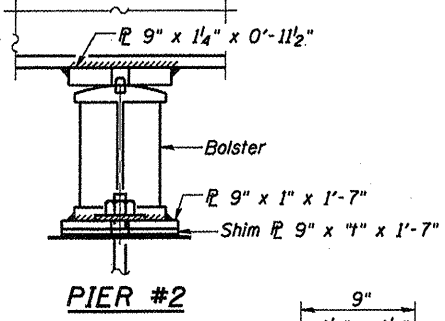
**CROSS SECTION**



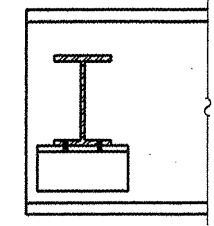
**SECTION AT ABUTMENT**



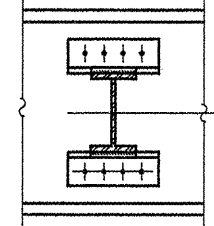
**#1 & #3**



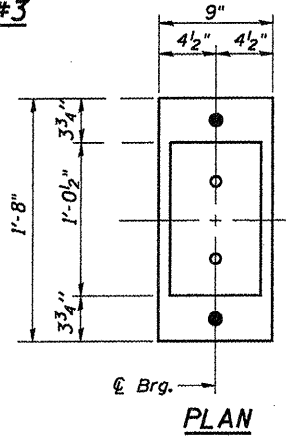
**PIER #2**



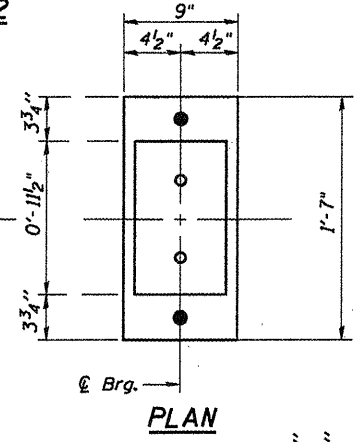
**DIAPHRAGM D**  
8 Required



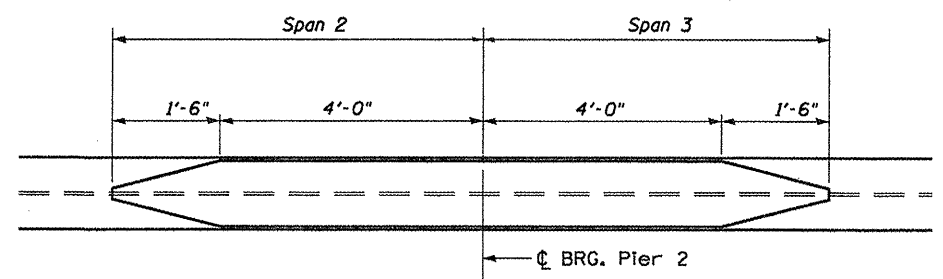
**DIAPHRAGM D1 & D2**  
32-D1 Required  
12-D2 Required



**PLAN**

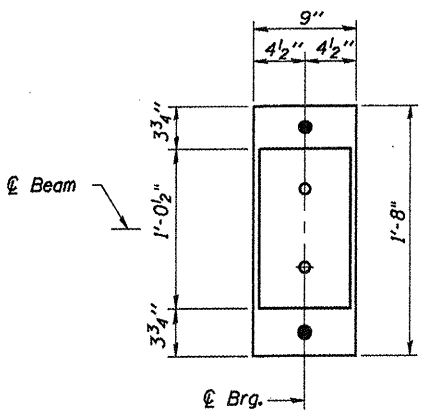


**PLAN**

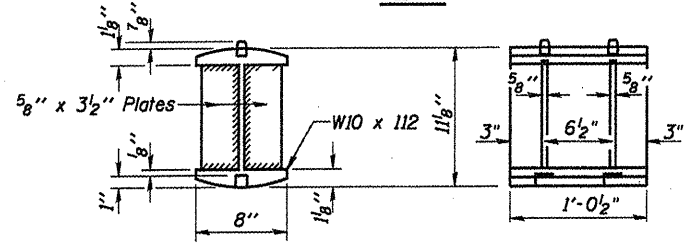


**DETAIL OF COVER PLATES**

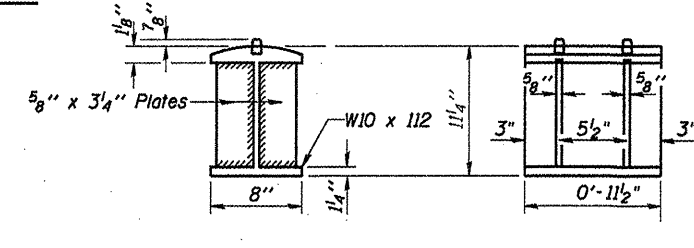
COVER PLATE  
9 1/2" x 7/16" x 11'-0"  
TOP AND BOTTOM



**PLAN**



**DETAIL OF ROCKER AT ABUTS, PIERS 1 & 3**



**DETAIL OF BOLSTER AT PIER 2**

**STRUCTURAL STEEL DETAILS**

SN 038-0086  
OVER FAI 57  
SECTION (38-5HB)BP  
IROQUOIS COUNTY  
STA. 541 + 66.36

FILE NAME =	USER NAME = spurlookd
al:\pwork\puidot\spurlookd\0382743\03828-shd-details.dgn	
PLOT SCALE = 100.0000 / 1"	
PLOT DATE = 3/30/2012	

DESIGNED - DBS	REVISED -
DRAWN - DBS	REVISED -
CHECKED -	REVISED -
DATE - MARCH 2012	REVISED -

STATE OF ILLINOIS
DEPARTMENT OF TRANSPORTATION

<b>STRUCTURAL STEEL DETAILS FOR SN 038-0086</b>	
SCALE:	SHEET NO. 2 OF 2 SHEETS STA. TO STA.

F.A.I. RTE. 57	SECTION (38-5HB)BP	COUNTY IROQUOIS	TOTAL SHEETS 10	SHEET NO. 10
			CONTRACT NO. 66C20	
ILLINOIS FED. AID PROJECT				