

STATE OF ILLINOIS
DEPARTMENT OF TRANSPORTATION
DIVISION OF HIGHWAYS
**PROPOSED
HIGHWAY PLANS**

F.A.P. RTE.	SECTION	COUNTY	TOTAL SHEETS	SHEET NO.
317	20 RS-6	IROQUOIS	14	1
		ILLINOIS	CONTRACT NO. 66C27	

INDEX OF SHEETS

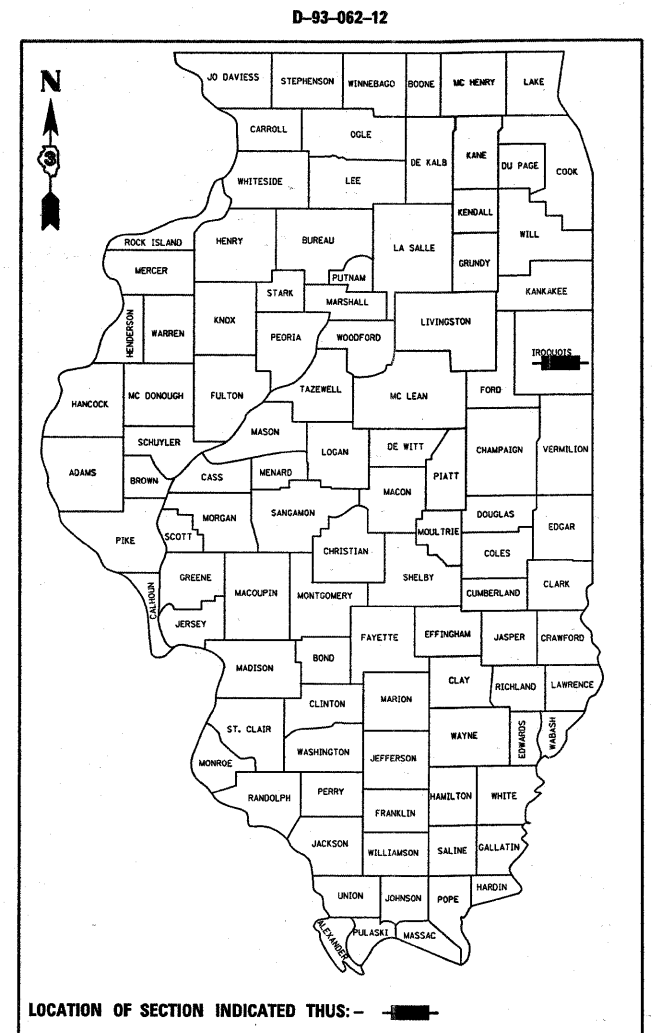
1	COVER SHEET
2	GENERAL NOTES
3-6	SUMMARY OF QUANTITIES
7-8	TYPICAL SECTIONS
9-11	SCHEDULES
12	PROJECT LAYOUT
13-14	MISCELLANEOUS DETAILS

LIST OF ILLINOIS DOT HIGHWAY STANDARDS

000001-06	STANDARD SYMBOLS, ABBREVIATIONS AND PATTERNS
001001-02	AREAS OF REINFORCEMENT BARS
001006	DECIMAL OF AN INCH AND OF A FOOT
406201-01	MAILBOX TURNOUT
424001-06	PERPENDICULAR CURB RAMPS FOR SIDEWALKS
424006	DIAGONAL CURB RAMPS FOR SIDEWALKS
424011	CORNER PARALLEL CURB RAMPS FOR SIDEWALKS
424016	MID-BLOCK CURB RAMPS FOR SIDEWALKS
424021	DEPRESSED CORNER FOR SIDEWALKS
424026	ENTRANCE / ALLEY PEDESTRIAN CROSSINGS
442201-03	CLASS C AND D PATCHES
606001-04	CONCRETE CURB TYPE B AND COMBINATION CONCRETE CURB AND GUTTER
701001-02	OFF-ROAD OPERATIONS 2L, 2W, MORE THAN 15' (4.5 m) AWAY
701006-03	OFF-ROAD OPERATIONS 2L, 2W, 15' (4.5 m) TO 24" (600 mm) FROM PAVEMENT EDGE
701201-04	LANE CLOSURE, 2L, 2W, DAY ONLY, FOR SPEEDS ≥ 45 MPH
701301-04	LANE CLOSURE, 2L, 2W, SHORT TIME OPERATIONS
701306-03	LANE CLOSURE, 2L, 2W, SLOW MOVING OPERATIONS DAY ONLY, FOR SPEEDS ≥ 45 MPH
701311-03	LANE CLOSURE, 2L, 2W, MOVING OPERATIONS - DAY ONLY
701801-05	SIDEWALK, CORNER OR CROSSWALK CLOSURE
701901-02	TRAFFIC CONTROL DEVICES
780001-03	TYPICAL PAVEMENT MARKINGS
781001-03	TYPICAL APPLICATIONS RAISED REFLECTIVE PAVEMENT MARKERS

**FAP 317 (US 24)
SECTION 20 RS-6
PROJECT : NHF-0317(093)
3P MILLING & RESURFACING
IROQUOIS COUNTY**

C-93-119-12



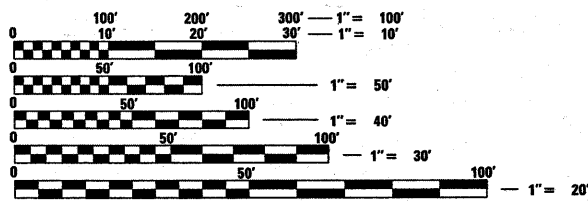
OTHER PRINCIPAL ARTERIAL
2011 ADT = 5,300
P.V. = 83.5%
S.U. = 5.2%
M.U. = 11.3%

STATE OF ILLINOIS
DEPARTMENT OF TRANSPORTATION
DIVISION OF HIGHWAYS

SUBMITTED March 23 2012
Eric S. Theriault
DEPUTY DIRECTOR OF HIGHWAYS, REGION ENGINEER

May 11 2012
John D. Baronselli, P.E.
acting ENGINEER OF DESIGN AND ENVIRONMENT

May 11 2012
William R. Freese
acting DIRECTOR OF HIGHWAYS, CHIEF ENGINEER

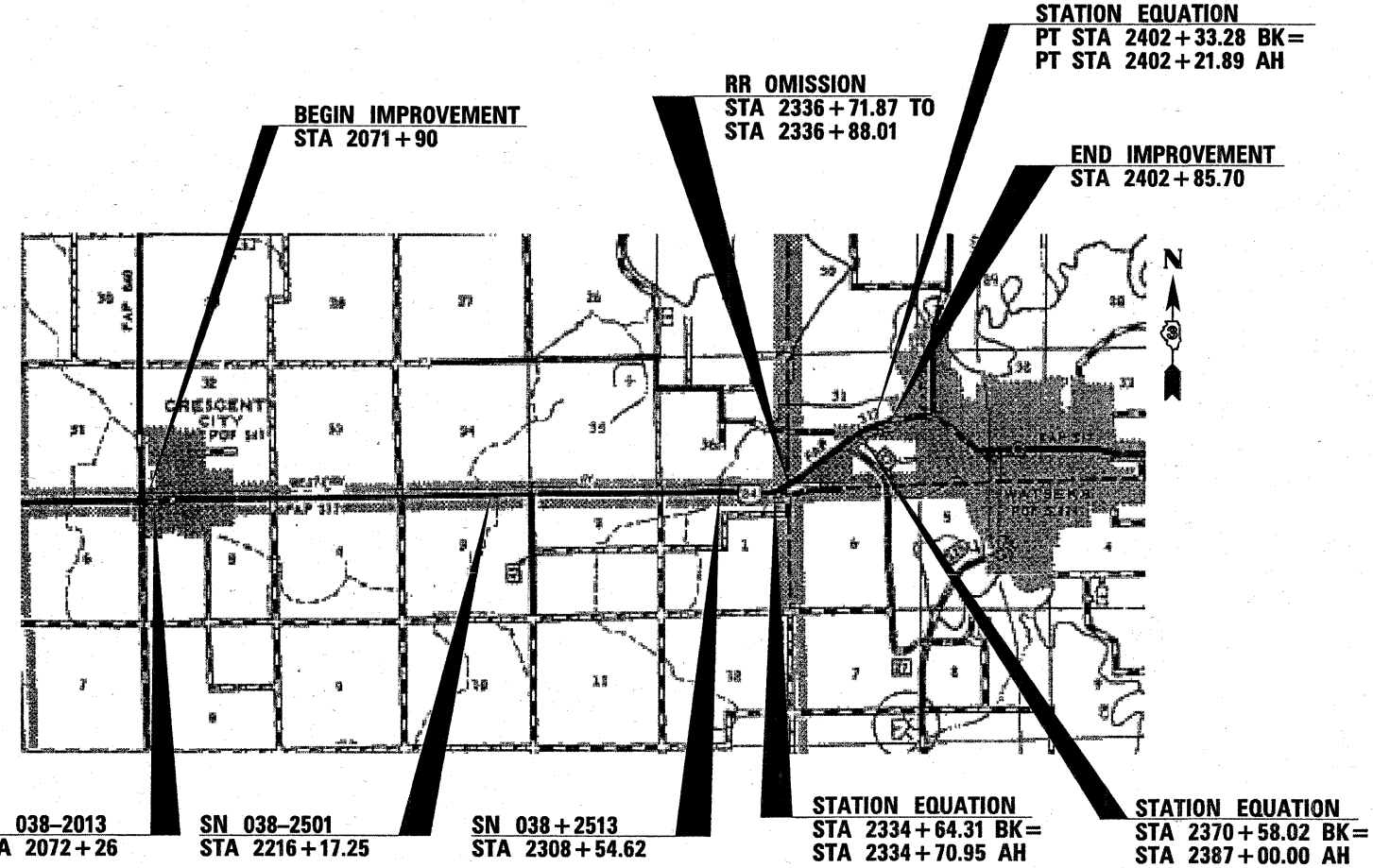


FULL SIZE PLANS HAVE BEEN PREPARED USING STANDARD ENGINEERING SCALES. REDUCED SIZED PLANS WILL NOT CONFORM TO STANDARD SCALES. IN MAKING MEASUREMENTS ON REDUCED PLANS, THE ABOVE SCALES MAY BE USED.

J.U.L.I.E.
JOINT UTILITY LOCATION INFORMATION FOR EXCAVATION
1-800-892-0123
OR 811

**PROJECT ENGINEER: JOE KANNEL, PE
UNIT CHIEF: MICHELE LINDEMANN, PE**

CONTRACT NO. 66C27



GROSS LENGTH = 31458.47 FT. = 5.958 MILE
NET LENGTH = 31442.33 FT. = 5.955 MILE

**PRINTED BY THE AUTHORITY
OF THE STATE OF ILLINOIS**