

# PROPOSED HIGHWAY PLANS

FAI ROUTE 57 (I-57)  
SECTION (38-5HB-1)BP

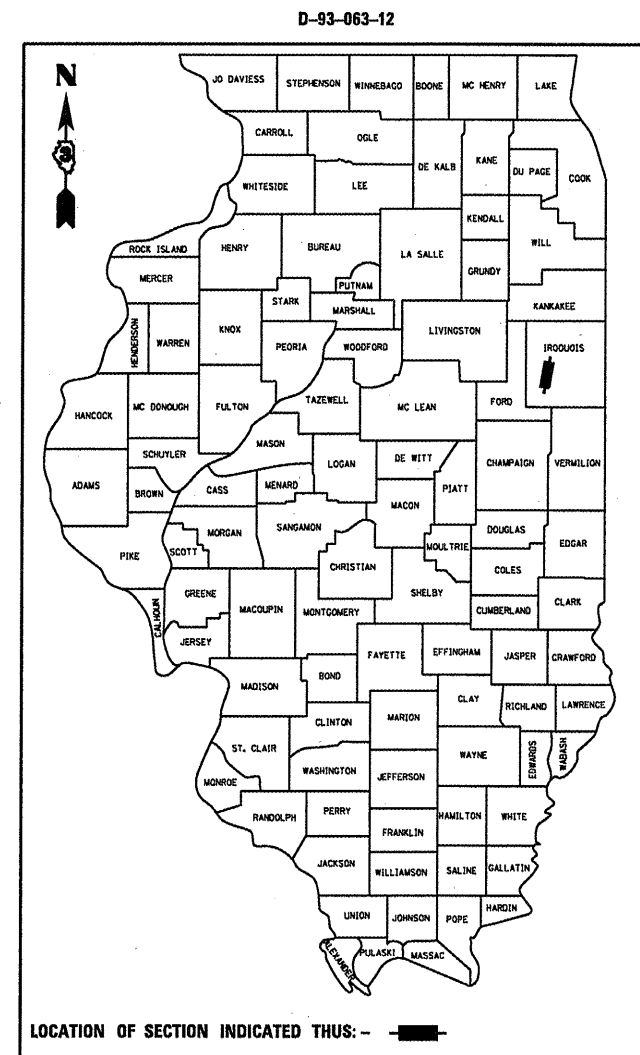
BRIDGE PAINTING  
STRUCTURE NO. 038-0007 (NB)  
STRUCTURE NO. 038-0008 (SB)  
CARRYING FAI 57 OVER W. 2nd STREET  
8.63 MILES SOUTH OF IL 116 (ASHKUM INT.)  
IROQUOIS COUNTY  
C-93-120-12

F.A.I. RTE.	SECTION	COUNTY	TOTAL SHEETS	SHEET NO.
57	(38-5HB-1)BP	IROQUOIS	10	1
		ILLINOIS	CONTRACT NO. 66C28	

1. COVER SHEET
2. GENERAL NOTES
3. SUMMARY OF QUANTITIES
4. TYPICAL SECTION
5. SCHEDULES
6. TRAFFIC CONTROL AND PROTECTION, STANDARD 701400 (SPECIAL)
7. TRAFFIC CONTROL AND PROTECTION, STANDARD 701402 (SPECIAL)
8. TYPICAL PAVEMENT MARKINGS
- 9 - 10. STRUCTURE PLANS

STANDARDS

- 701101-02 OFF-ROAD OPERATIONS MULTILANE, 15' (4.5 m) TO 24' (600 mm) FROM PAVEMENT EDGE
- 701901-02 TRAFFIC CONTROL DEVICES
- 704001-07 TEMPORARY CONCRETE BARRIER

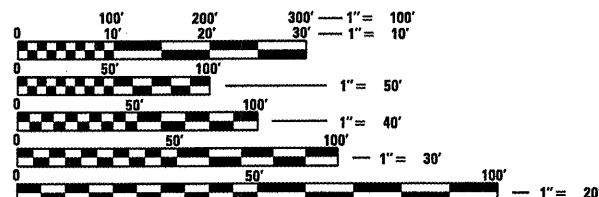


LOCATION OF SECTION INDICATED THIS: - [black bar] -

URBAN		URBAN	
INTERSTATE		INTERSTATE	
FAI 57 (I-57)		W. 2ND STREET	
2011		2011	
ADT	18200	ADT	500
P.V.	74.18%	P.V.	82.00%
S.U.	4.67%	S.U.	16.00%
M.U.	21.15%	M.U.	2.00%

PROJECT LOCATION

STRUCTURE NO. 038-0007 (NB)  
STRUCTURE NO. 038-0008 (SB)  
STA. 585 + 10.21



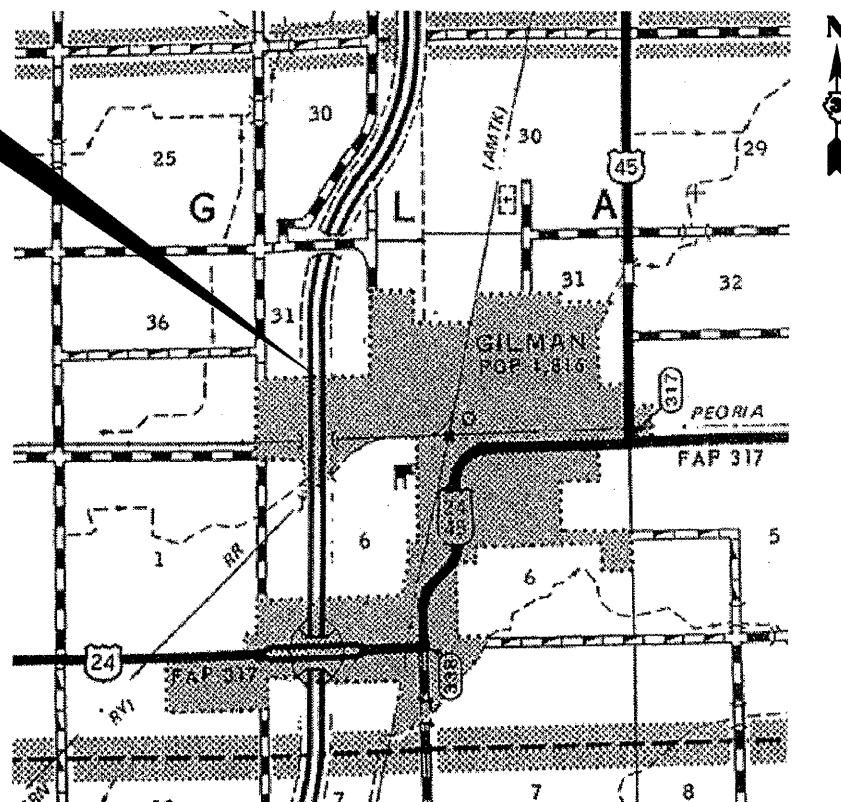
FULL SIZE PLANS HAVE BEEN PREPARED USING STANDARD ENGINEERING SCALES. REDUCED SIZED PLANS WILL NOT CONFORM TO STANDARD SCALES. IN MAKING MEASUREMENTS ON REDUCED PLANS, THE ABOVE SCALES MAY BE USED.

J.U.L.I.E.  
JOINT UTILITY LOCATION INFORMATION FOR EXCAVATION  
1-800-892-0123  
OR 811

DISTRICT 3 NO: (815) 434-6131

PROJECT ENGINEER: JOE KANNEL P.E.  
UNIT CHIEF: RON WOODSHANK  
TOWNSHIP: DOUGLAS

CONTRACT NO. 66C28



GROSS LENGTH = 107 FT. = 0.020 MILE  
NET LENGTH = 107 FT. = 0.020 MILE

STATE OF ILLINOIS  
DEPARTMENT OF TRANSPORTATION  
DIVISION OF HIGHWAYS

SUBMITTED 3-30 2012  
*Eric S. Therkelsen*  
DEPUTY DIRECTOR OF HIGHWAYS, REGION ENGINEER

May 11 2012  
*John D. Baranowski P.E.*  
ENGINEER OF DESIGN AND ENVIRONMENT

May 11 2012  
*William B. Fryer*  
DIRECTOR OF HIGHWAYS, CHIEF ENGINEER

PRINTED BY THE AUTHORITY  
OF THE STATE OF ILLINOIS

**GENERAL NOTES**

PLAN DIMENSIONS AND DETAILS RELATIVE TO THE EXISTING PLANS AND SUBJECT TO ROUTINE VARIATIONS. THE CONTRACTOR SHALL FIELD VERIFY EXISTING DIMENSIONS AND DETAILS AFFECTING NEW CONSTRUCTION AND MAKE NECESSARY APPROVED ADJUSTMENTS PRIOR TO CONSTRUCTION OR ORDERING OF MATERIALS. SUCH VARIATIONS SHALL NOT BE CAUSE FOR ADDITIONAL COMPENSATION FOR A CHANGE IN THE SCOPE OF WORK. HOWEVER, THE CONTRACTOR WILL BE PAID FOR THE QUANTITY FURNISHED BASED UPON THE UNIT BID PRICE FOR THE WORK.

THE CONTRACTOR SHALL BE RESPONSIBLE FOR PROTECTING UTILITY PROPERTY FROM CONSTRUCTION OPERATIONS AS OUTLINED IN ARTICLE 107.31 OF THE STANDARD SPECIFICATIONS. THE "JULIE" NUMBER IS 1-800-892-0123. A MINIMUM OF FORTY-EIGHT (48) HOURS ADVANCE NOTICE IS REQUIRED.

FOR STABILIZATION, ALL TYPE III BARRICADES SHALL REQUIRE A MINIMUM OF FOUR SAND BAGS PER BARRICADE.

WHERE SECTION OR SUBSECTION MONUMENTS ARE ENCOUNTERED, THE ENGINEER SHALL BE NOTIFIED BEFORE SUCH MONUMENTS ARE REMOVED. THE CONTRACTOR SHALL PROTECT AND CAREFULLY PRESERVE ALL MONUMENTS UNTIL AN AUTHORIZED SURVEYOR OR AGENT HAS WITNESSED OR OTHERWISE REFERENCED THEIR LOCATION. THE CONTRACTOR SHALL BE RESPONSIBLE FOR HAVING AN AUTHORIZED SURVEYOR REESTABLISH ANY SECTION OR SUBSECTION MONUMENTS DESTROYED BY HIS OPERATIONS.

ANY REFERENCE TO A STANDARD IN THESE PLANS SHALL BE INTERPRETED TO MEAN THE EDITION AS INDICATED BY THE SUBNUMBER SHOWN IN THE LIST OF STANDARDS OR THE COPY INCLUDED IN THESE PLANS.

THE CONTRACTOR SHALL BE REQUIRED TO SECURE WASTE CONTAINERS THAT REMAIN ON THE JOB SITE. THIS WILL ENTAIL THAT ALL WASTE CONTAINERS CANNOT BE MOVED OR OPENED DURING NON-WORKING HOURS.

WORKING DAYS SHALL BE CHARGED UNTIL THE CONTRACTOR/SUBCONTRACTOR LISCENSED TO DISPOSE OF LEAD PAINT RESIDUE HAS REMOVED THE WASTE MATERIAL FROM THE JOB SITE ACCORDING TO ALL FEDERAL, STATE AND LOCAL LAWS AND ORDINANCES.

THE EXISTING STRUCTURAL STEEL ON SN 006-0007, SN 006-0008, SN 006-0009 AND SN 006-0010 CONTAINS LEAD. THE CONTRACTOR SHOULD TAKE APPROPRIATE PRECAUTIONS TO DEAL WITH THE PRESENCE OF LEAD PAINT ON THIS PROJECT.

THE SSPC-OP1 AND SSPC-OP2 "PAINTING CONTRACTOR CERTIFICATIONS" WILL BE REQUIRED FOR THIS PROJECT.

**COMMITMENTS**

LOCATON 1: SN 038-0007 (NB)  
CLEANING AND PAINTING OF THE EXISTING STRUCTURAL STEEL SHALL BE AS SPECIFIED IN THE SPECIAL PROVISION FOR "CLEANING AND PAINTING EXISTING STEEL STRUCTURES". ALL EXTERIOR AND INTERIOR SURFACES OF THE BEAMS, DIAPHRAGMS, BEARING ASSEMBLIES AND ALL OTHER ASSOCIATED STEEL COMPONENTS SHALL BE CLEANED "NEAR WHITE BLAST CLEANING - SSPC10". ALL EXISTING STEEL SHALL BE PAINTED ACCORDING TO THE REQUIREMENTS OF "PAINT SYSTEM 1 - OZ/E/U". THE COLOR OF THE FINAL FINISH COAT FOR ALL INTERIOR STEEL SURFACES SHALL BE "GRAY, MUNSELL NO. 5B 7/1". THE COLOR OF THE FINAL FINISH COAT FOR THE EXTERIOR, BOTTOM FLANGE, AND BEARING ASSEMBLIES OF THE FASCIA BEAMS SHALL BE "GREEN, MUNSELL NO. 7.5G 4/8".

LOCATON 2: SN 038-0008 (SB)  
CLEANING AND PAINTING OF THE EXISTING STRUCTURAL STEEL SHALL BE AS SPECIFIED IN THE SPECIAL PROVISION FOR "CLEANING AND PAINTING EXISTING STEEL STRUCTURES". ALL EXTERIOR AND INTERIOR SURFACES OF THE BEAMS, DIAPHRAGMS, BEARING ASSEMBLIES AND ALL OTHER ASSOCIATED STEEL COMPONENTS SHALL BE CLEANED "NEAR WHITE BLAST CLEANING - SSPC10". ALL EXISTING STEEL SHALL BE PAINTED ACCORDING TO THE REQUIREMENTS OF "PAINT SYSTEM 1 - OZ/E/U". THE COLOR OF THE FINAL FINISH COAT FOR ALL INTERIOR STEEL SURFACES SHALL BE "GRAY, MUNSELL NO. 5B 7/1". THE COLOR OF THE FINAL FINISH COAT FOR THE EXTERIOR, BOTTOM FLANGE, AND BEARING ASSEMBLIES OF THE FASCIA BEAMS SHALL BE "GREEN, MUNSELL NO. 7.5G 4/8".

DATE: 3-30-12

PREPARED BY: Tom Bevin  
DISTRICT STUDIES & PLANS ENGINEER

EXAMINED BY: Harold Jones  
DISTRICT CONSTRUCTION ENGINEER

Wayne J. Phillips  
DISTRICT MATERIALS ENGINEER

James A. Wheeler  
DISTRICT OPERATIONS ENGINEER

FILE NAME =	USER NAME = petelyj	DESIGNED - RLW	REVISED -
ci:\pv\work\pvidot\petelyj\d0302605\036628-sht-details.dgn		DRAWN - RLW	REVISED -
		CHECKED -	REVISED -
		DATE -	REVISED -

**STATE OF ILLINOIS  
DEPARTMENT OF TRANSPORTATION**

**GENERAL NOTES**

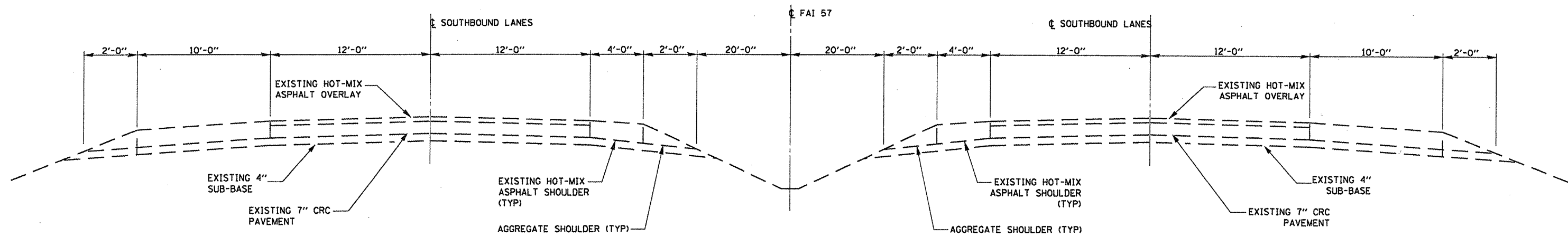
SCALE: SHEET NO. 1 OF 1 SHEETS STA. TO STA.

F.A.I. RTE.	SECTION	COUNTY	TOTAL SHEETS	SHEET NO.
57	(38-5HB-1)BP	ILROQUOIS	10	2
CONTRACT NO. 66C28				
ILLINOIS FED. AID PROJECT				

CODE NO.	ITEM	UNIT	TOTAL QUANTITY	CONSTR. CODE
				STATE FUNDS 100% STATE STRUCTURE 0014 RURAL
50606701	CLEANING AND PAINTING STRUCTURAL STEEL, LOCATION 1	L SUM	1	1
50606702	CLEANING AND PAINTING STRUCTURAL STEEL, LOCATION 2	L SUM	1	1
67100100	MOBILIZATION	L SUM	1	1
70100450	TRAFFIC CONTROL AND PROTECTION, STANDARD 701201	L SUM	1	1
70400100	TEMPORARY CONCRETE BARRIER	FOOT	313	313
70400200	RELOCATE TEMPORARY CONCRETE BARRIER	FOOT	929	929
* 78009006	MODIFIED URETHANE PAVEMENT MARKING - LINE 6"	FOOT	404	404
78300100	PAVEMENT MARKING REMOVAL	SQ FT	200	200
X0326907	PORTABLE, VEHICLE MOUNTED, CHANGEABLE MESSAGE SIGN	CAL MO	1	1
X0326880	MESSAGE BOARD VEHICLE DRIVER	HOUR	120	120
X5067501	BRIDGE CLEANING AND PAINTING WARRANTY NUMBER 1	L SUM	1	1
X5067502	BRIDGE CLEANING AND PAINTING WARRANTY NUMBER 2	L SUM	1	1
X7010208	TRAFFIC CONTROL AND PROTECTION, STANDARD 701402 (SPECIAL)	EACH	1	1
Z0007101	CONTAINMENT AND DISPOSAL OF LEAD PAINT CLEANING RESIDUES NO. 1	L SUM	1	1
Z0007102	CONTAINMENT AND DISPOSAL OF LEAD PAINT CLEANING RESIDUES NO. 2	L SUM	1	1
Z0030250	IMPACT ATTENUATORS, TEMPORARY (NON-REDIRECTIVE), TEST LEVEL 3	EACH	1	1
Z0030350	IMPACT ATTENUATORS, RELOCATE (NON-REDIRECTIVE), TEST LEVEL 3	EACH	3	3

\* SPECIALITY ITEM

FILE NAME =	USER NAME = potelyj	DESIGNED - RLW	REVISED -	<b>STATE OF ILLINOIS DEPARTMENT OF TRANSPORTATION</b>	<b>SUMMARY OF QUANTITIES</b>	F.A.I. RTE.	SECTION	COUNTY	TOTAL SHEETS	SHEET NO.	
c:\pwwork\pwwork\potelyj\d0302605\0366	28-shd-details.dgn	DRAWN - RLW	REVISED -			57	(38-5HB-1)BP	IROQUOIS	10	3	
PLOT SCALE = 100.0000' / 1"	CHECKED -	REVISOR -	REVISED -			SCALE:		SHEET NO. 1 OF 1 SHEETS		STA.	TO STA.
PLOT DATE = 3/30/2012	DATE -	REVISED -	REVISED -			[ILLINOIS] FED. AID PROJECT					
						CONTRACT NO. 66C28					



**TYPICAL SECTION**

FILE NAME =	USER NAME = petelyj	DESIGNED - RLW	REVISED -
c:\pwork\pedit\petelyj\02302605\036828-shr-details.dgn		DRAWN - RLW	REVISED -
	PLOT SCALE = 100.0000' / 1" =	CHECKED -	REVISED -
	PLOT DATE = 3/30/2012	DATE -	REVISED -

STATE OF ILLINOIS  
DEPARTMENT OF TRANSPORTATION

**TYPICAL SECTION**

SCALE: SHEET NO. 1 OF 1 SHEETS STA. TO STA.

F.A.I. RTE.	SECTION	COUNTY	TOTAL SHEETS	SHEET NO.
57	(38-5HB-1)BP	IRROUOIS	10	4
CONTRACT NO. 66C28			ILLINOIS FED. AID PROJECT	

**SCHEDULE - CLEANING AND PAINTING STRUCTURAL STEEL**

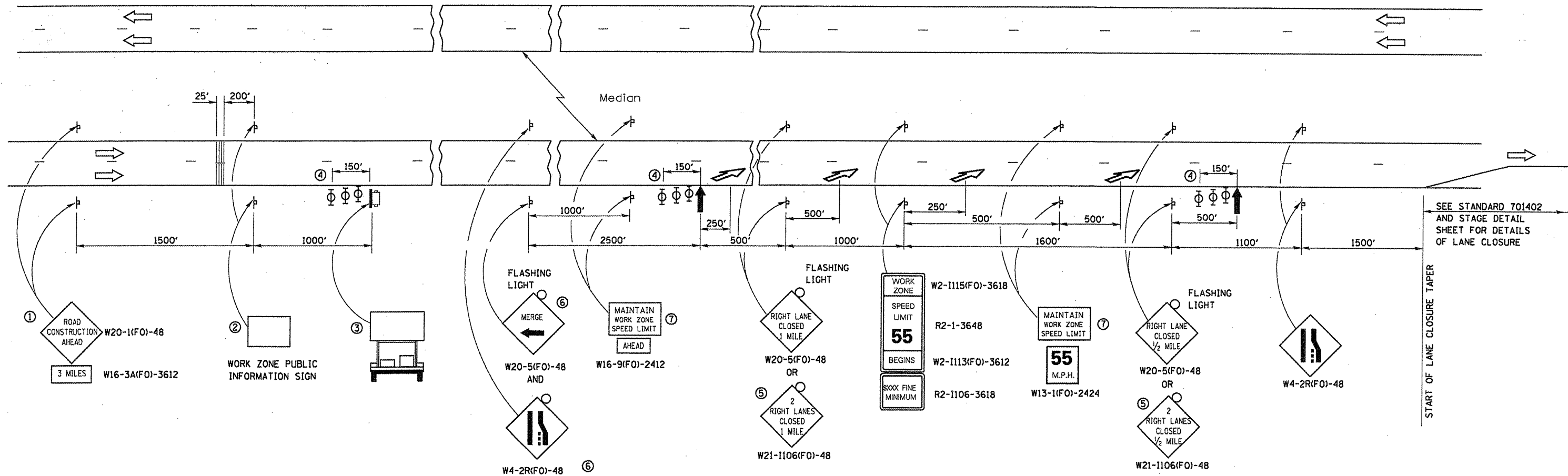
LOCATION	CLEANING & PAINTING STRUCTURAL STEEL, LOCATION 1	CLEANING & PAINTING STRUCTURAL STEEL, LOCATION 2	CONTAINMENT & DISPOSAL OF LEAD PAINT CLEANING RESIDUES NO. 1	CONTAINMENT & DISPOSAL OF LEAD PAINT CLEANING RESIDUES NO. 2	BRIDGE CLEANING & PAINTING WARRANTY NUMBER 1	BRIDGE CLEANING & PAINTING WARRANTY NUMBER 2
	L SUM	L SUM	L SUM	L SUM	L SUM	L SUM
SN 038-0007 (NB)	1		1		1	
SN 038-0008 (SB)		1		1		1
<b>TOTAL</b>	<b>1</b>	<b>1</b>	<b>1</b>	<b>1</b>	<b>1</b>	<b>1</b>

**SCHEDULE - TRAFFIC CONTROL**

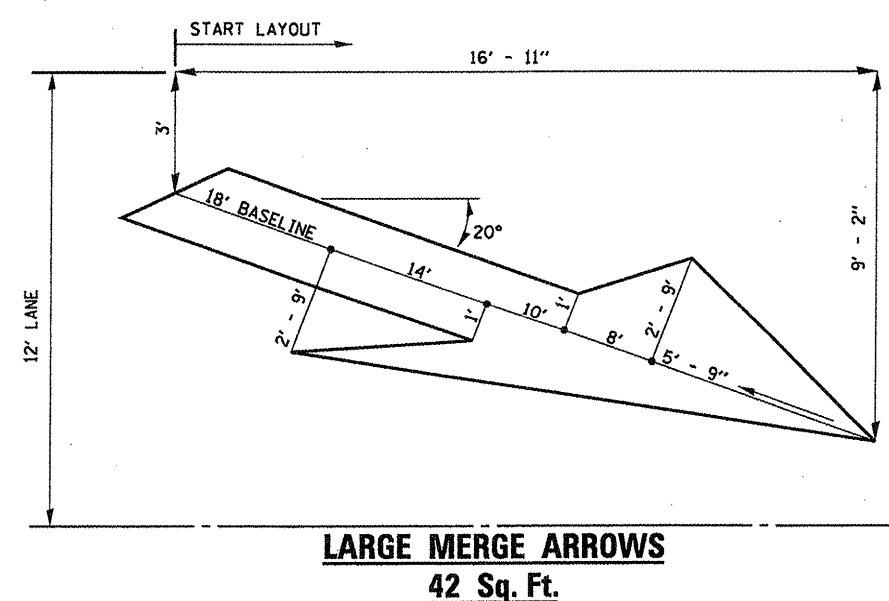
LOCATION	TRAFFIC CONTROL & PROTECTION, STANDARD 701402	TEMPORARY CONCRETE BARRIER	RELOCATE TEMPORARY CONCRETE BARRIER	IMPACT ATTENUATORS, TEMPORARY (NON-REDIRECTIVE) TEST LEVEL 3	IMPACT ATTENUATORS, RELOCATE (NON-REDIRECTIVE) TEST LEVEL 3
	EACH	FOOT	FOOT	EACH	EACH
SN 038-0007 (NB)	0.5	313	313	1	1
SN 038-0008 (SB)	0.5		616		2
<b>TOTAL</b>	<b>1</b>	<b>313</b>	<b>929</b>	<b>1</b>	<b>3</b>

**SCHEDULE - PAVEMENT MARKING**

LOCATION	PAVEMENT MARKING REMOVAL	MODIFIED URETHANE PAVEMENT MARKING LINE 6"
	EACH	FOOT
SN 038-0007 (NB)	100	202
SN 038-0008 (SB)	100	202
<b>TOTAL</b>	<b>200</b>	<b>404</b>

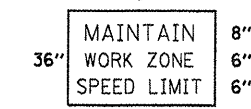


SEE STANDARD 701402 AND STAGE DETAIL SHEET FOR DETAILS OF LANE CLOSURE



**LARGE MERGE ARROWS**  
42 Sq. Ft.

- ① THE ROAD CONSTRUCTION AHEAD SIGN SHALL BE LOCATED 3 MILES IN ADVANCE OF THE PROJECT LIMITS.
- ② THE MESSAGE AND SIZE OF THE WORK ZONE PUBLIC INFORMATION SIGN SHALL BE AS SPECIFIED BY THE DEPARTMENT.
- ③ TO BE PLACED IN THE MEDIAN WHEN FEASIBLE. THE MESSAGE BOARD SHALL BE USED TO DISPLAY STATUS OF LANES WITHIN THE PROJECT. THE PRIMARY MESSAGES SHALL BE:  
"RIGHT LANE CLOSED" / " x MILES AHEAD"  
"LEFT LANE CLOSED" / " x MILES AHEAD"  
"ALL LANES OPEN"
- ④ THREE, TYPE II BARRICADES, DRUMS, OR VERTICAL BARRICADES AT 50' CENTERS.
- ⑤ THIS SIGN SHALL BE USED WHEN 2 LANES ARE CLOSED.
- ⑥ WHEN THE LEFT LANE IS CLOSED, SWITCH THESE TWO SIGNS AND THE DIRECTION OF THE MERGE ARROW.
- ⑦ 48"x36" FLUORESCENT ORANGE SIGN WITH BLACK LETTERS.



- ↑ ARROW BOARD
- ☐ PORTABLE CHANGEABLE MESSAGE SIGN
- ⊥ SIGN
- ⊕ TYPE II BARRICADE, DRUM, OR VERTICAL BARRICADE WITH MONODIRECTIONAL FLASHING LIGHT
- ↘ LANE DROP ARROW - SEE STANDARD 780001
- ▨ TEMPORARY THERMOPLASTIC RUMBLE STRIPS

**GENERAL NOTE:**

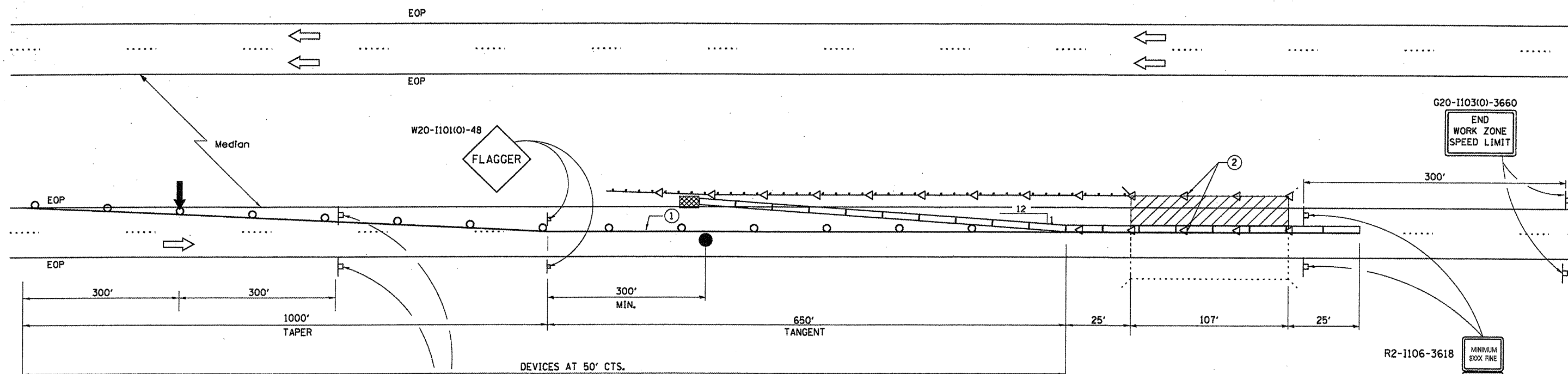
THIS STANDARD IS USED WHERE AT ANY TIME A LANE IS CLOSED ON A FREEWAY/EXPRESSWAY.

WHEN THE LEFT LANE IS CLOSED, LEFT LANE CLOSED SIGNS SHALL BE SUBSTITUTED FOR THE RIGHT LANE CLOSED SIGNS.

THE FIRST TWO SIGNS AND THE MESSAGE BOARD ARE STATIONARY. THE OTHER SIGNS AND ARROWBOARDS SHALL BE MOVED AS NECESSARY TO MAINTAIN THE REQUIRED DISTANCE FROM THE START OF THE LANE CLOSURE TAPER(S).

SEE SPECIAL PROVISIONS.

FILE NAME =	USER NAME = potelyj	DESIGNED - RLW	REVISED -	<b>STATE OF ILLINOIS DEPARTMENT OF TRANSPORTATION</b>	<b>TRAFFIC CONTROL AND PROTECTION, STANDARD 701400 (SPECIAL)</b>	F.A.I. RTE.	SECTION	COUNTY	TOTAL SHEETS	SHEET NO.
c:\pwwork\pvidot\potelyj\d8302685\036828-sh-t-details.dgn	DRAWN - RLW	REVISED -	57			(38-5HB-1)BP	IROQUOIS	10	6	
PLOT SCALE = 1/8" = 1'-0"	CHECKED -	REVISED -	CONTRACT NO. 66C28							
PLOT DATE = 3/30/2012	DATE -	REVISED -	ILLINOIS FED. AID PROJECT							
					SCALE:	SHEET NO. 1 OF 1 SHEETS		STA.	TO STA.	



SEE STANDARD 701400 (SPECIAL) FOR APPROACH LANE CLOSURE SIGNING

R2-1106-3618 MINIMUM 3000 FINE  
 W2-1113(O)-3612 BEGINS  
 R2-1-3648 45 SPEED LIMIT  
 W2-1115(O)-3618 WORK ZONE

R2-1106-3618 MINIMUM 3000 FINE  
 W2-1113(O)-3612 BEGINS  
 R2-1-3648 45 SPEED LIMIT  
 W2-1115(O)-3618 WORK ZONE

**SYMBOLS**

- ↑ ARROW BOARD
- ▨ WORK AREA
- ⊥ SIGN
- TRAFFIC CONTROL DRUM WITH STEADY BURN MONODIRECTIONAL LIGHT
- ▬ TEMPORARY CONCRETE BARRIER
- ◁ MONODIRECTIONAL BARRIER WALL/GUARDRAIL MARKER
- ▩ IMPACT ATTENUATOR
- ..... EXISTING PAVEMENT MARKING

**GENERAL NOTES**

THIS STANDARD IS USED WHERE AT ANY TIME ANY VEHICLE, EQUIPMENT, WORKERS OR THEIR ACTIVITIES WILL ENCROACH ON THE PAVEMENT OR ON THE SHOULDER WITHIN 24 INCHES OF THE EDGE OF PAVEMENT FOR DAYLIGHT OPERATION EXCEEDING ONE DAY AND WHERE TEMPORARY CONCRETE BARRIER IS UTILIZED.

THIS STANDARD MUST BE USED IN COMBINATION WITH STANDARD 701400 (SPECIAL).

WHEN WORK IS BEING PERFORMED IN THE LEFT LANE, THE SET UP WOULD BE A MIRROR IMAGE TO WHAT IS SHOWN.

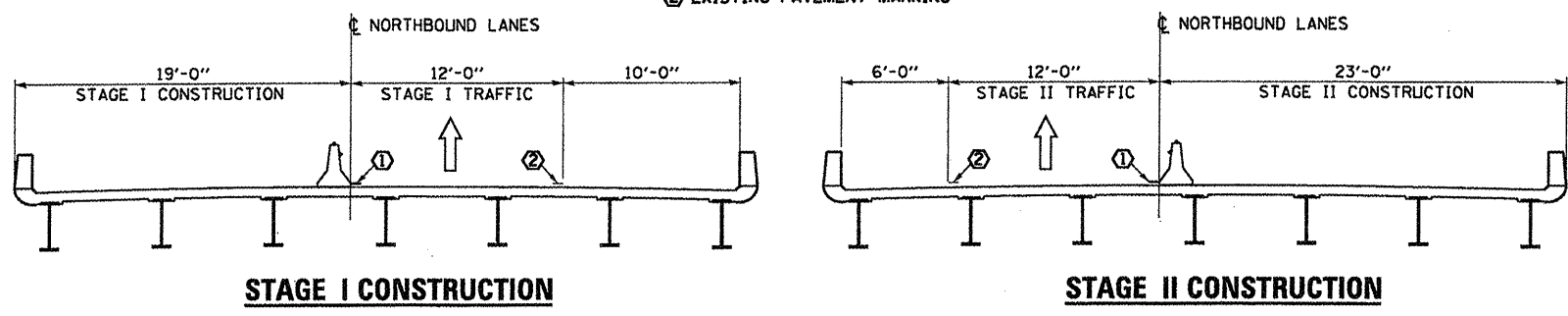
FLAGGER, FLAGGER SIGNS AND SPEED LIMIT SIGNS SHALL BE REQUIRED WHENEVER TEMPORARY CONCRETE BARRIER IS NOT IN PLACE. WHEN TEMPORARY CONCRETE BARRIER IS IN PLACE, THE FLAGGER SIGNS SHALL BE REMOVED OR COVERED AND THE FLAGGER NOT REQUIRED.

TEMPORARY CONCRETE BARRIER SHALL BE ACCORDING TO STANDARD 704001.

CALCULATE L AS FOLLOWS:

FORMULA 45 MPH OR MORE  
 $L = (W)(S)$   
 W = WIDTH OF OFFSET IN FEET  
 S = NORMAL POSTED SPEED

- ① TEMPORARY PAVEMENT MARKING
- ② EXISTING PAVEMENT MARKING



NOTE: TRAFFIC CONTROL AND PROTECTION FOR TWO-LANE ROADS SHALL BE ACCORDING TO STANDARD 701201.

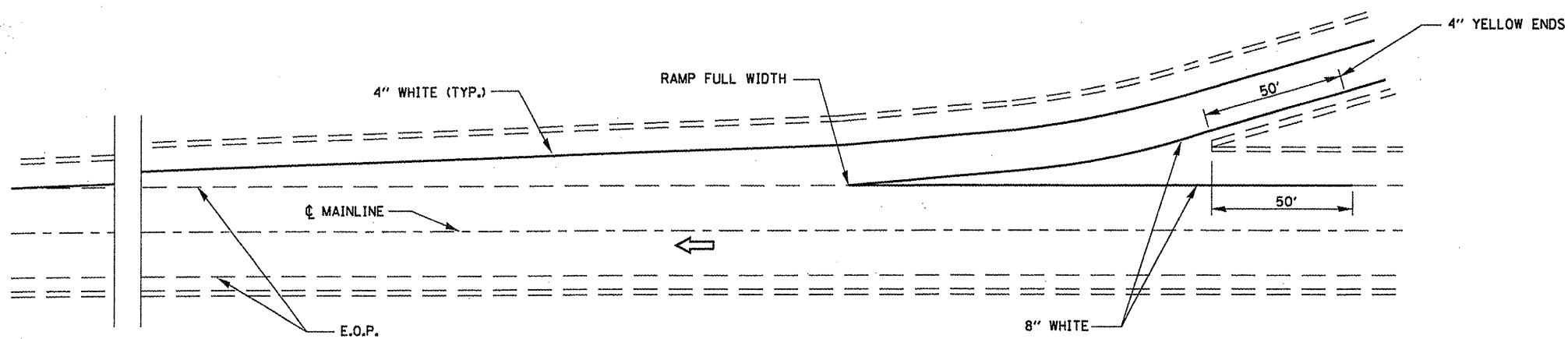
FILE NAME =	USER NAME = petelyj	DESIGNED -	REVISED -
ct:\pw_work\p\dot\petelyj\02302605\03865	28-sh1-detail.dgn	DRAWN -	REVISED -
	PLOT SCALE = 100.0000' / in.	CHECKED -	REVISED -
	PLOT DATE = 3/30/2012	DATE -	REVISED -

STATE OF ILLINOIS  
 DEPARTMENT OF TRANSPORTATION

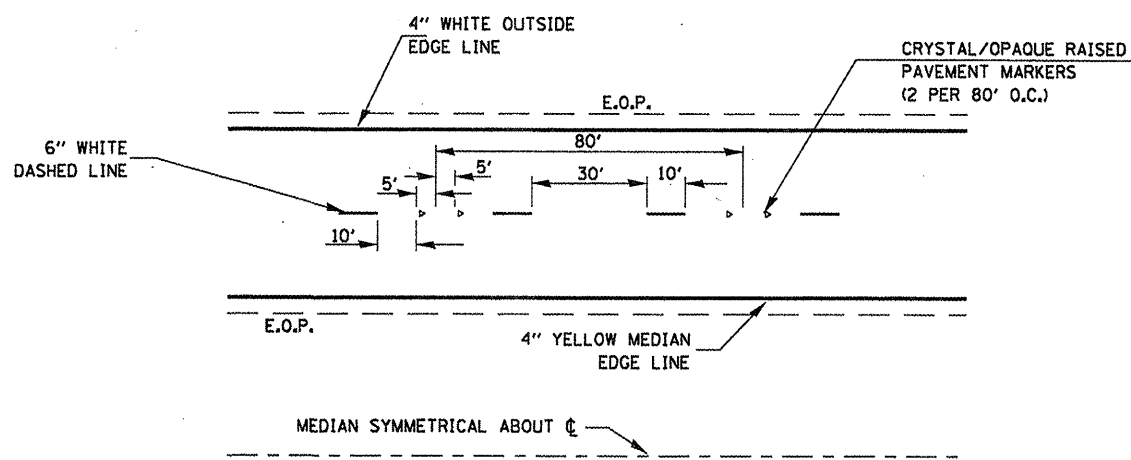
TRAFFIC CONTROL AND PROTECTION  
 STANDARD 701402 (SPECIAL)

F.A.I. RTE.	SECTION	COUNTY	TOTAL SHEETS	SHEET NO.
57	(38-5MB-1)BP	IRROQUOIS	10	7
CONTRACT NO. 66C28				
ILLINOIS FED. AID PROJECT				

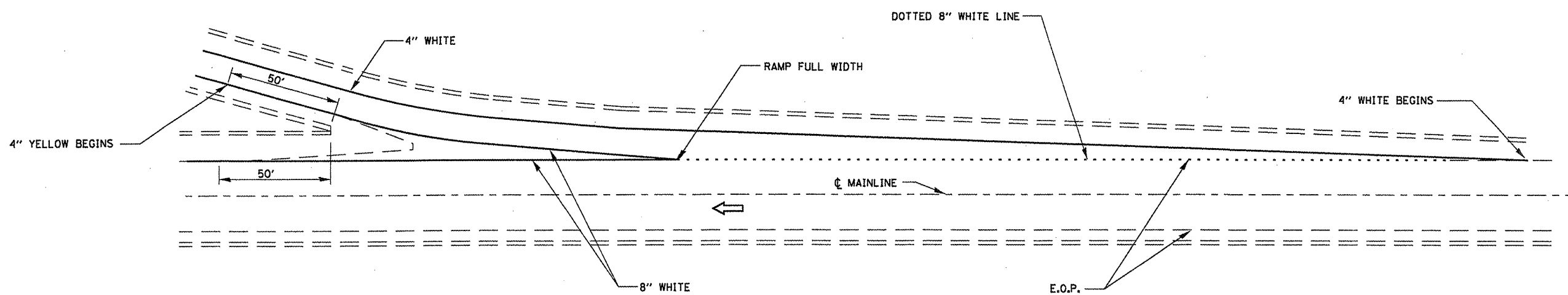
SCALE: SHEET NO. 1 OF 1 SHEETS STA. TO STA.



**TYPICAL PAVEMENT MARKING FOR ENTRANCE RAMP TERMINALS**



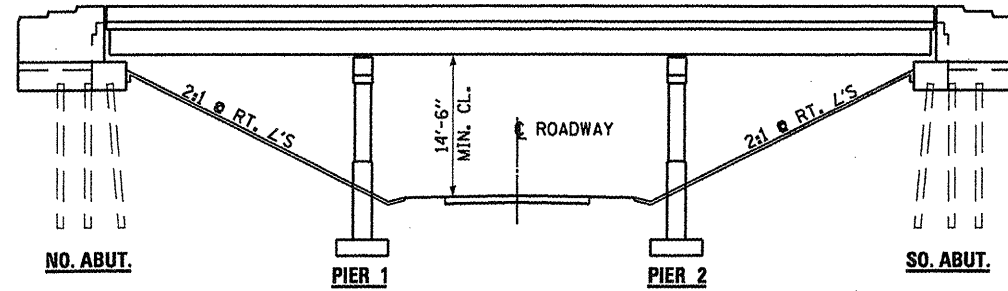
**TYPICAL PAVEMENT MARKINGS**



**TYPICAL PAVEMENT MARKINGS FOR EXIT RAMP TERMINALS**

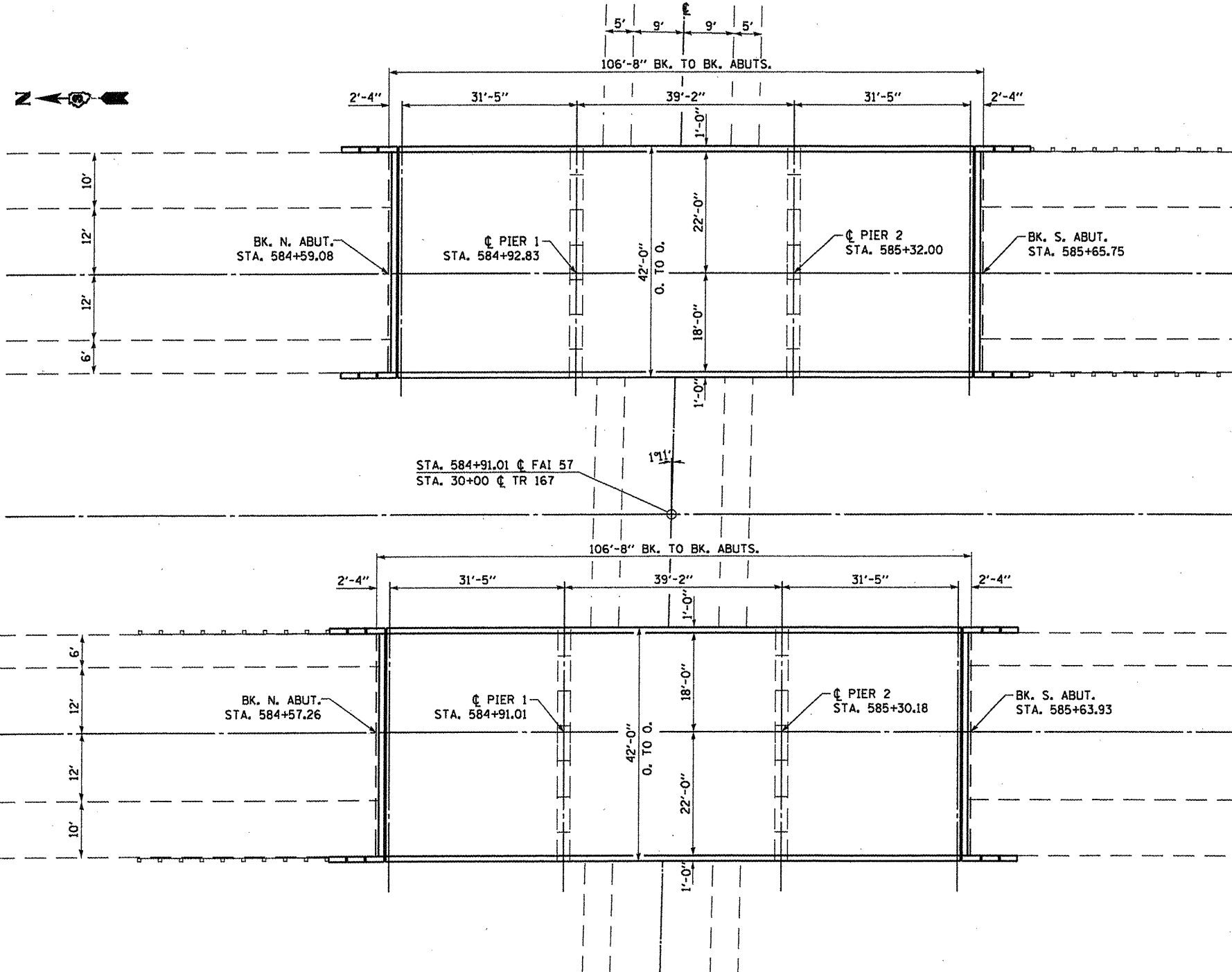
FILE NAME =	USER NAME = petelyj	DESIGNED - RLW	REVISED -	<b>STATE OF ILLINOIS DEPARTMENT OF TRANSPORTATION</b>	<b>TYPICAL PAVEMENT MARKING</b>		F.A.I. RTE.	SECTION	COUNTY	TOTAL SHEETS	SHEET NO.
cr:\pwork\pwork\petelyj\d0302605\03666	28-sht-details.dgn	DRAWN - RLW	REVISED -				57	(38-5HB-1)BP	IRODOUIS	10	8
PLOT SCALE = 100.0000' / in.	CHECKED -	REVISED -	REVISED -		SCALE: SHEET NO. 1 OF 2 SHEETS STA. TO STA.		CONTRACT NO. 66C28		ILLINOIS FED. AID PROJECT		
PLOT DATE = 3/30/2012	DATE -	REVISED -	REVISED -								





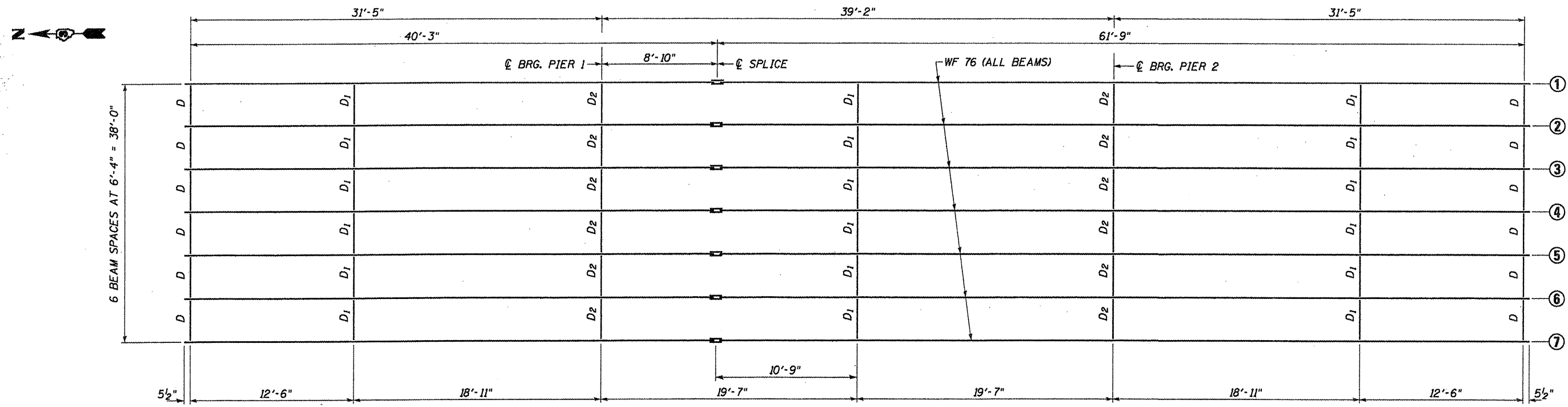
**GENERAL NOTES**

PLAN DIMENSIONS AND DETAILS RELATIVE TO EXISTING PLANS ARE SUBJECT TO NOMINAL CONSTRUCTION VARIATIONS. THE CONTRACTOR SHALL FIELD VERIFY EXISTING DIMENSIONS AND DETAILS AFFECTING NEW CONSTRUCTION AND MAKE NECESSARY APPROVED ADJUSTMENTS PRIOR TO CONSTRUCTION OR ORDERING OF MATERIALS. SUCH VARIATIONS SHALL NOT BE CAUSE FOR ADDITIONAL COMPENSATION FOR A CHANGE IN SCOPE OF THE WORK; HOWEVER, THE CONTRACTOR WILL BE PAID FOR THE QUANTITY ACTUALLY FURNISHED AT THE UNIT PRICE BID FOR THE WORK.

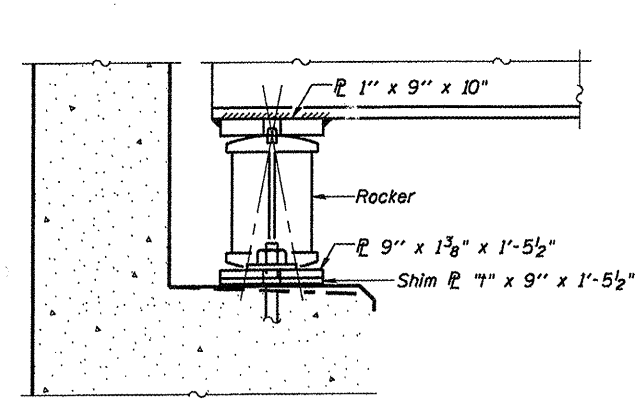


**THIS SHEET FOR INFORMATION ONLY**

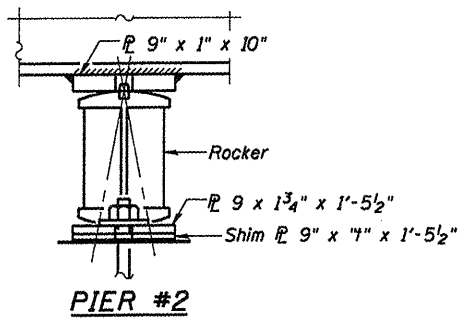
FILE NAME =	USER NAME = petelyj	DESIGNED - RLW	REVISED -	<b>STATE OF ILLINOIS DEPARTMENT OF TRANSPORTATION</b>	<b>GENERAL PLAN &amp; ELEVATION FOR STRUCTURES 038-0007 (NB) &amp; 038-0008 (SB)</b>	F.A.L. RTE.	SECTION	COUNTY	TOTAL SHEETS	SHEET NO.	
c:\pwwork\pwwork\petelyj\d0382685\03666	28-shit-details.dgn	DRAWN - RLW	REVISED -			57	(38-5HB-1)BP	IROQUOIS	10	9	
PLOT SCALE = 100.0000' / 1"	CHECKED -	REVISED -	SCALE:			SHEET NO. 1 OF 2 SHEETS	STA.	TO STA.	CONTRACT NO. 66C28		
PLOT DATE = 3/30/2012	DATE -	REVISED -	ILLINOIS FED. AID PROJECT								



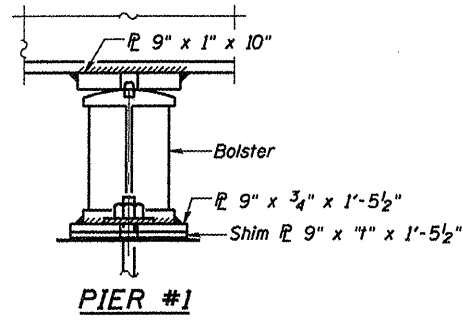
**STRUCTURAL STEEL LAYOUT**



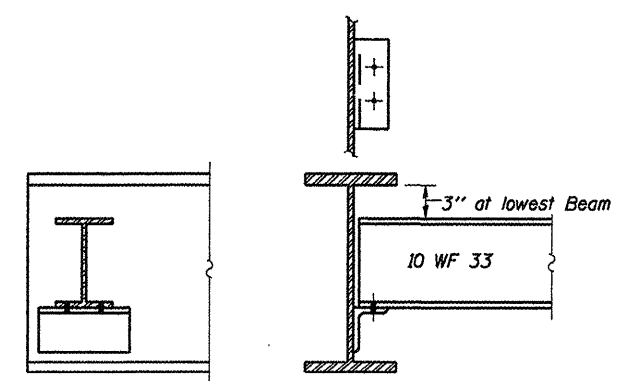
**SECTION AT ABUTMENT**



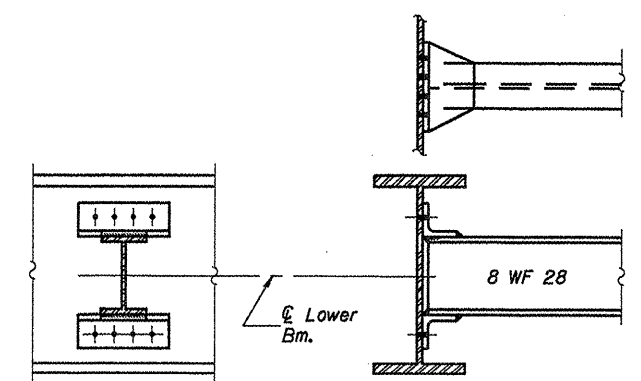
**PIER #2**



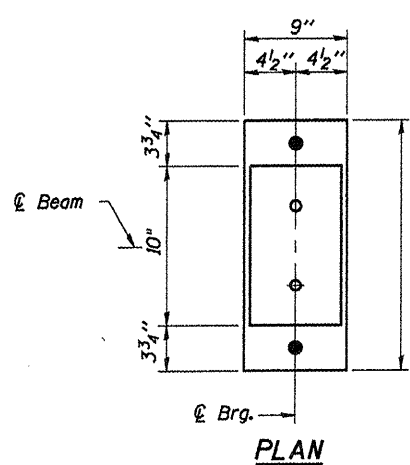
**PIER #1**



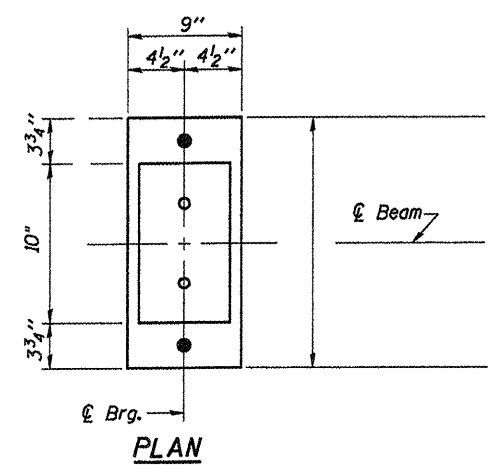
**DIAPHRAGM D**  
24 Required



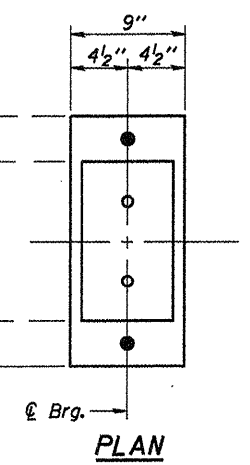
**DIAPHRAGM D1 & D2**  
36-D1 Required  
24-D2 Required



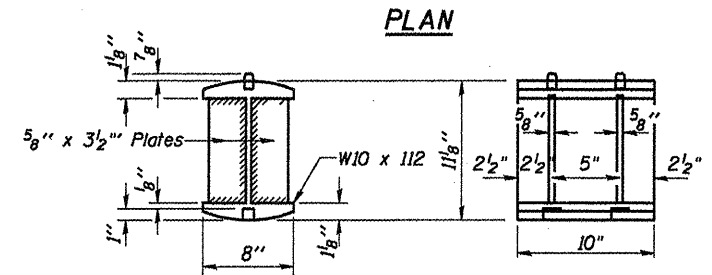
**PLAN**



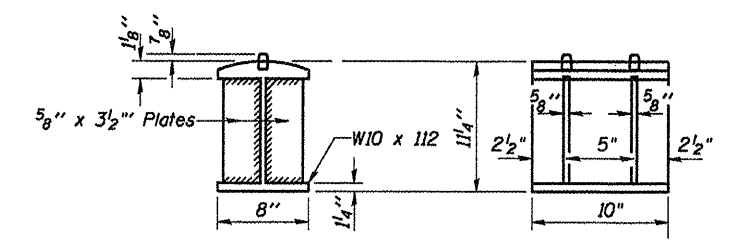
**PLAN**



**PLAN**



**DETAIL OF ROCKER AT ABUTS, PIER 2**



**DETAIL OF BOLSTER AT PIER 1**

**THIS SHEET FOR INFORMATION ONLY**

FILE NAME =	USER NAME = potelyj	DESIGNED -	REVISED -	<b>STATE OF ILLINOIS DEPARTMENT OF TRANSPORTATION</b>	<b>STRUCTURAL STEEL DETAILS FOR SN 038-0007 &amp; SN 038-0008</b>	F.A.I. RTE.	SECTION	COUNTY	TOTAL SHEETS	SHEET NO.	
c:\pwwork\pwwork\potelyj\03802605\03802608-shr-detail.dgn	PLOT SCALE = 100.0000' / in.	DRAWN -	REVISED -			57	(38-SHB-1)BP	IROQUOIS	10	10	
PLOT DATE = 3/30/2012	DATE -	CHECKED -	REVISED -			SCALE: SHEET NO. 2 OF 2 SHEETS STA. TO STA.		CONTRACT NO. 66C28			
						ILLINOIS FED. AID PROJECT					