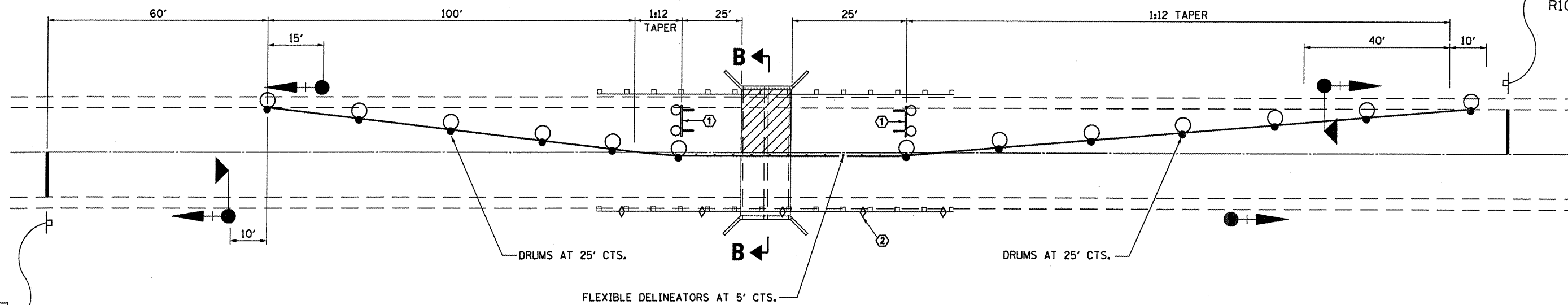


**SECTION B-B**

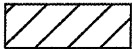
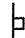




LOOKING NORTH



STOP HERE ON RED  
R10-6A-2430

STOP HERE ON RED  
R10-6A-2430

**SYMBOLS**

-  Work area
-  Sign
-  Type III barricade
-  Traffic signal with microwave detector and backplate
-  Drum with steady burning bi-directional light
-  Crystal, bidirectional guardrail marker

- ① Type III barricade to be placed when no work is being performed.
- ② Guardrail markers at 25' (7.6 m) cts. See Standard 635011
- ③ Temporary Pavement Marking
- ④ Existing pavement marking

**GENERAL NOTES**

This Detail is used where, at any time, any vehicle, equipment, workers, or their activities will encroach on one lane of a bridge. Traffic signals and a positive barrier are required.

See traffic Control and Protection, Standard 701316 for advanced signing details.

Traffic signals shall be operational only when all traffic controls are in place. When traffic signals are not in operation, flaggers shall be used and traffic control shall conform to Standard 701201.

Existing or temporary pavement markings shall be on both sides of open lane from stop bar to stop bar.

FILE NAME =	USER NAME = petelj	DESIGNED - RON WOODSHANK	REVISED -	<b>STATE OF ILLINOIS DEPARTMENT OF TRANSPORTATION</b>	<b>STAGING DETAILS FOR STAGE II CONSTRUCTION</b>	F.A.P. RTE.	SECTION	COUNTY	TOTAL SHEETS	SHEET NO.
ci\pw\work\pwidot\petelj\d0303935\036629-ah-ALL SHEETS.dgn	DRAWN - RON WOODSHANK	REVISED -	326			(126C)	FORD	9	6	
PLOT SCALE = 100.0000' / 1"	CHECKED -	REVISED -	CONTRACT NO. 66C29							
PLOT DATE = 4/5/2012	DATE -	REVISED -	ILLINOIS FED. AID PROJECT							
					SCALE:	SHEET NO. 2 OF 2 SHEETS		STA.	TO STA.	