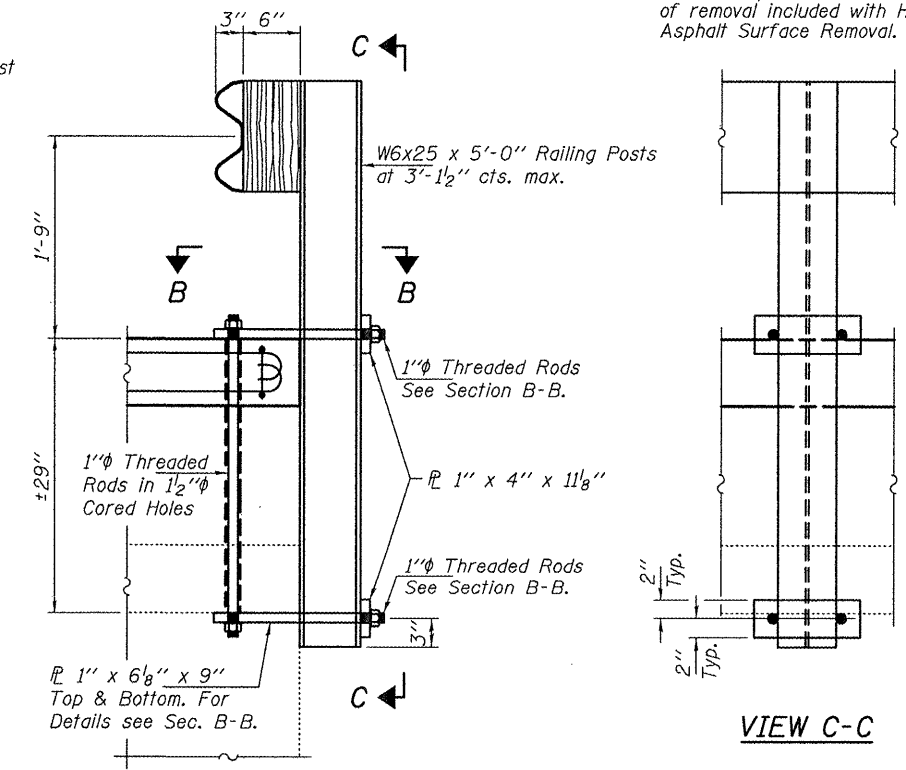
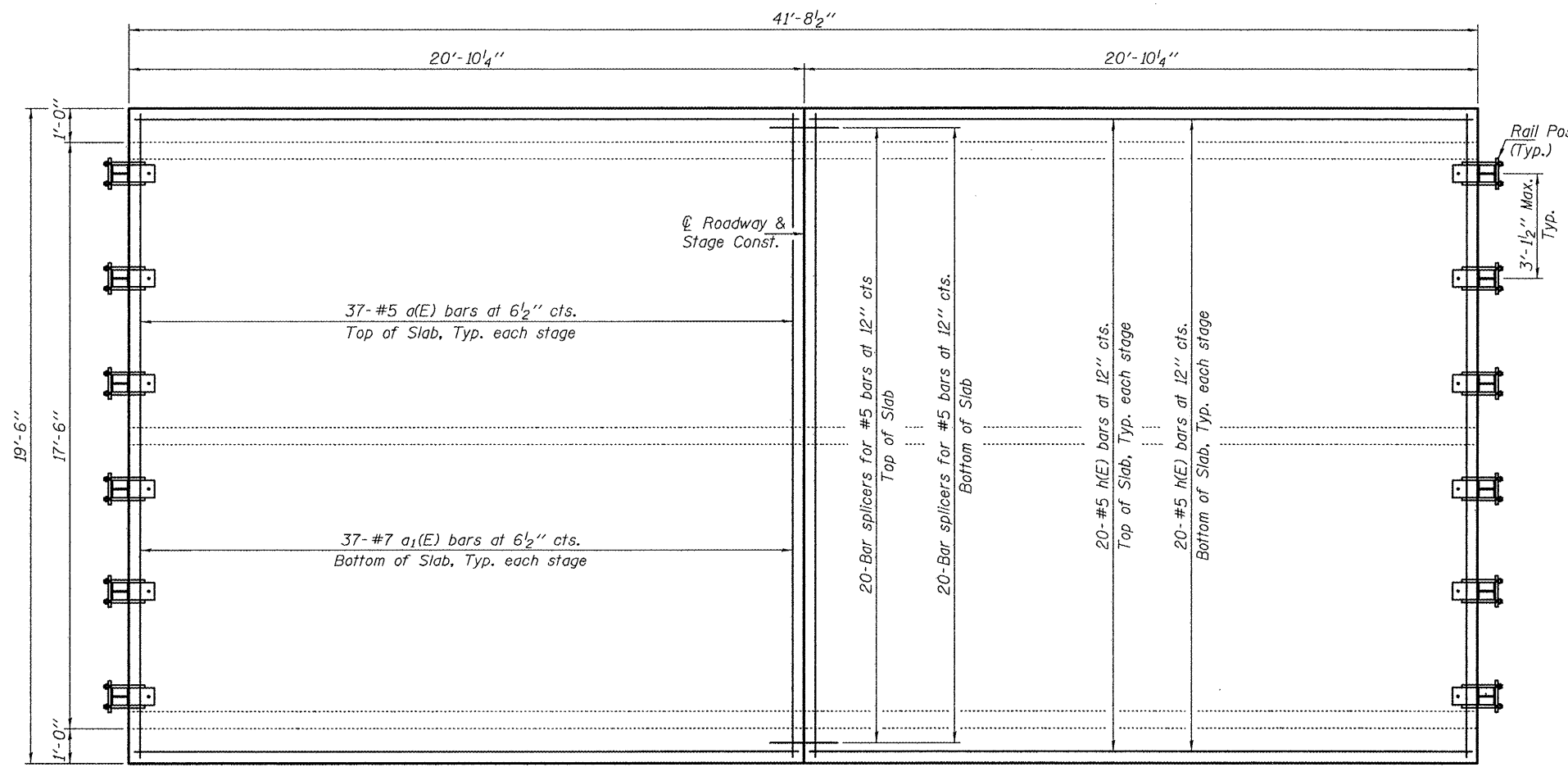


* Remove 7" of existing HMA overlay and replace with 7" concrete slab as shown. Slope to match roadway. Cost of removal included with Hot-Mix Asphalt Surface Removal.



PLAN

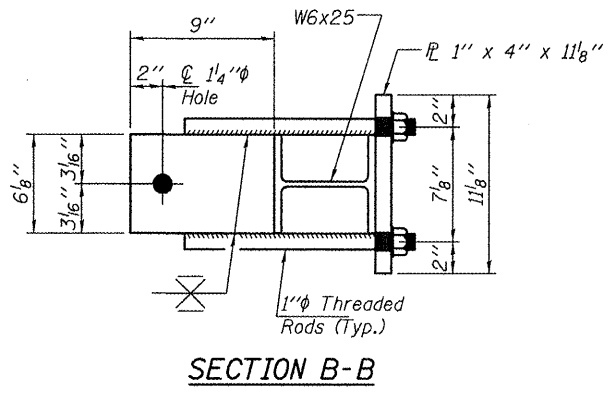
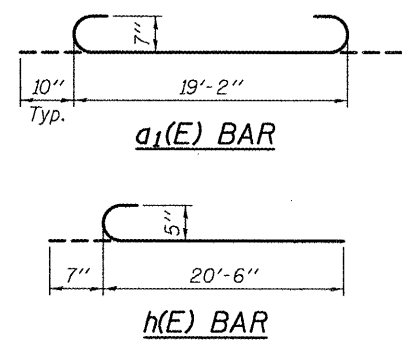
GENERAL NOTES

Plan dimensions and details relative to existing plans are subject to nominal construction variations. The Contractor shall field verify existing dimensions and details affecting new construction and make necessary approved adjustments prior to construction or ordering of materials. Such variations shall not be cause for additional compensation for a change in scope of the work, however, the Contractor will be paid for the quantity actually furnished at the unit price bid for the work.

Reinforcement bars designated (E) shall be epoxy coated.
The slab surface shall have its final finish tined according to Article 420.09(e)(1) of the Standard Specifications. Cost included with Concrete Superstructures.

DESIGN STRESSES

FIELD UNITS
f'c = 3,500 psi
fy = 60,000 psi (Reinf.)



BILL OF MATERIAL

Bar	No.	Size	Length	Shape
a(E)	74	#5	19'-2"	—
a1(E)	74	#7	20'-10"	U
h(E)	80	#5	21'-1"	—
Bar Splicers			Each	40
Hot-Mix Asphalt Surface Removal			Sq. Yds.	90.4
Reinforcement Bars, Epoxy Coated			Pound	6390
Concrete Superstructure			Cu. Yds.	17.6
SPBGR Attached to Structure (Special)			Foot	39.0



DESIGNED: <i>David Carl Puzey</i>	EXAMINED: <i>Jay F. Jolly</i>	DATE: MAY 8, 2012
CHECKED: <i>Victor H. Veliz</i>	PASSED: <i>Carl Puzey</i>	
DRAWN: <i>Kyle M. Steffen</i>		
CHECKED: <i>VP</i>		