

06-15-12 LETTING ITEM 086

FOR INDEX OF SHEETS, SEE SHEET NO. 2
FOR SUMMARY OF QUANTITIES SEE SHEET NO. 4 & 5

CURRENT TRAFFIC DATA
N/A

DESIGN DESIGNATION
N/A

STATE OF ILLINOIS
DEPARTMENT OF TRANSPORTATION
DIVISION OF HIGHWAYS
**PROPOSED
HIGHWAY PLANS**
F.A.I. ROUTE 74 (I-74)
SECTION REST AREA REPAIR 2012-2

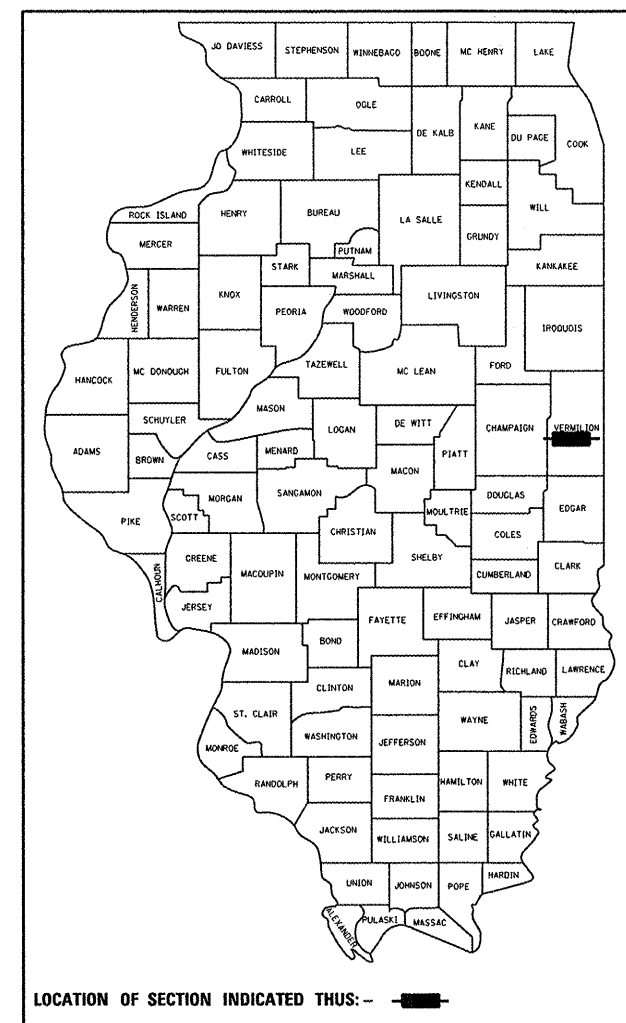
**PARKING IMPROVEMENT
VERMILION COUNTY**

C-95-006-12

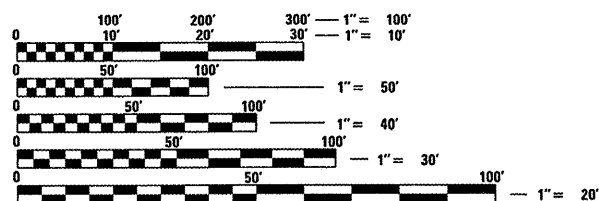
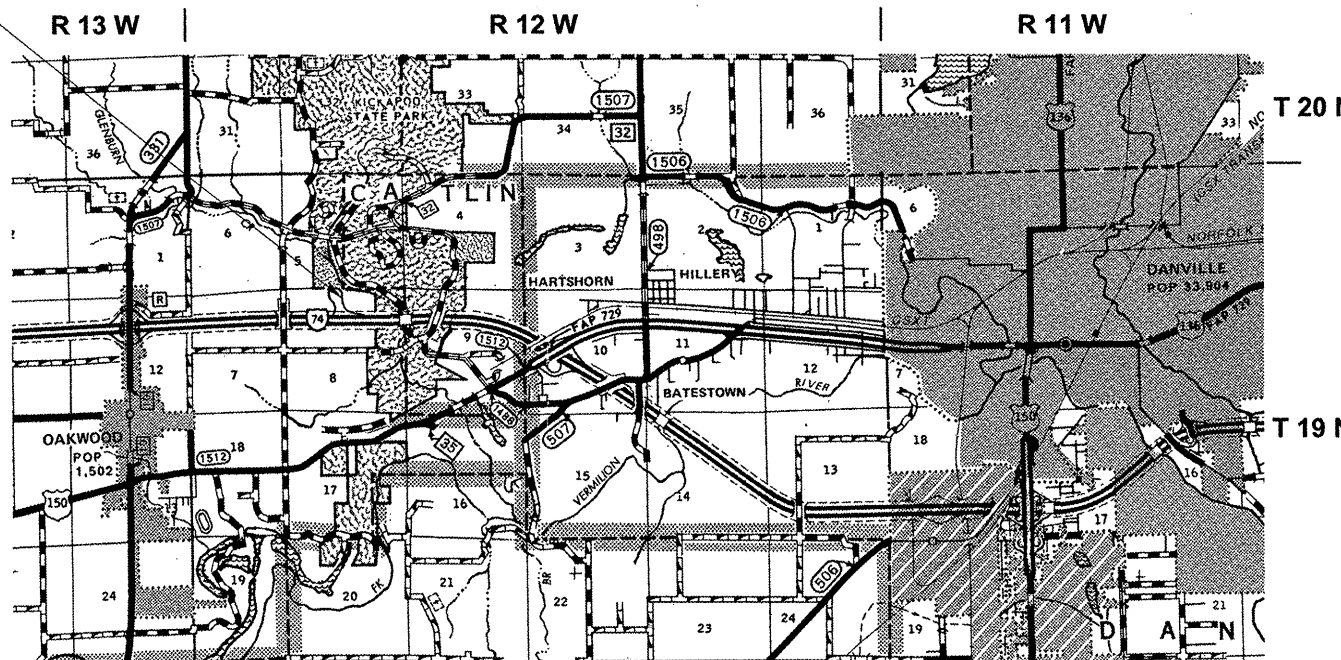
SALT KETTLE REST AREA

F.A.I. RTE.	SECTION	COUNTY	TOTAL SHEETS	SHEET NO.
74	REST AREA REPAIR 2012-2	VERMILION	19	1
		ILLINOIS	CONTRACT NO. 70969	

D-95-006-12



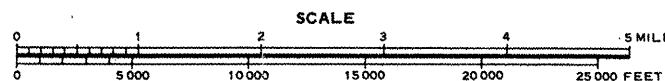
PROPOSED REST AREA REPAIR
AT SALT KETTLE REST AREA



FULL SIZE PLANS HAVE BEEN PREPARED USING STANDARD ENGINEERING SCALES. REDUCED SIZED PLANS WILL NOT CONFORM TO STANDARD SCALES. IN MAKING MEASUREMENTS ON REDUCED PLANS, THE ABOVE SCALES MAY BE USED.

J.U.L.I.E.
JOINT UTILITY LOCATION INFORMATION FOR EXCAVATION
1-800-892-0123
OR 811 OAKWOOD TOWNSHIP

PROJECT ENGINEER: NANCY FASIG
SQUAD LEADER: BRIAN J. HOGAN
DESIGNER: AMBER WEISER
(217)-465-4181



GROSS LENGTH = N/A FT. = N/A MILE
NET LENGTH = N/A FT. = N/A MILE

CONTRACT NO. 70969

STATE OF ILLINOIS
DEPARTMENT OF TRANSPORTATION
DIVISION OF HIGHWAYS

SUBMITTED 3/5 20 12
Justin R. ...
DEPUTY DIRECTOR OF HIGHWAYS, REGION ENGINEER

May 11 20 12
John D. ...
ENGINEER OF DESIGN AND ENVIRONMENT

May 11 20 12
William R. Freyler
DIRECTOR OF HIGHWAYS, CHIEF ENGINEER

**PRINTED BY THE AUTHORITY
OF THE STATE OF ILLINOIS**

INDEX OF SHEETS

<u>SHEET NO.</u>	<u>DESCRIPTION</u>
1	COVER SHEET
2	INDEX OF SHEETS
2	LIST OF HIGHWAY STANDARDS
3	GENERAL NOTES
4-5	SUMMARY OF QUANTITIES
6-7	TYPICAL CROSS SECTIONS
8-12	SCHEDULE OF QUANTITIES
13-14	PLAN SHEETS
15-17	DETAIL SHEETS
18-19	CROSS SECTION SHEETS

LIST OF HIGHWAY STANDARDS

<u>STANDARD NO.</u>	<u>DESCRIPTION</u>
000001-06	STANDARD SYMBOLS, ABBREVIATIONS AND PATTERNS
001006	DECIMAL OF AN INCH AND OF A FOOT
420001-07	PAVEMENT JOINTS
420701-02	PAVEMENT FABRIC
424006	DIAGONAL CURB RAMPS FOR SIDEWALK
424016	MID BLOCK CURB RAMPS FOR SIDEWALKS
442101-07	CLASS B PATCHES
483001-04	PCC SHOULDER
602011-02	CATCH BASIN, TYPE C
602401-03	MANHOLE, TYPE A
604001-03	FRAME AND LIDS, TYPE 1
604051-03	FRAME AND GRATE, TYPE 11
606001-04	CONCRETE CURB TYPE B AND COMBINATION CONCRETE CURB AND GUTTER
701901-02	TRAFFIC CONTROL DEVICES

FILE NAME =	USER NAME = hogenbj	DESIGNED - _____	REVISED - _____	STATE OF ILLINOIS DEPARTMENT OF TRANSPORTATION	INDEX OF SHEETS AND LIST OF HIGHWAY STANDARDS	F.A.I. RTE.	SECTION	COUNTY	TOTAL SHEETS	SHEET NO.
c:\pwork\puidot\hogenbj\00294537\0570969-shtr-gennote.dgn	PLOT SCALE = 100.0000' / 1"	DRAWN - _____	REVISED - _____		74	REST AREA REPAIR 2012-2	VERMILION	19	2	
PLOT DATE = 3/5/2012	CHECKED - _____	DATE - _____	REVISED - _____		SCALE: _____ SHEET NO. 1 OF 1 SHEETS STA. _____ TO STA. _____		CONTRACT NO. 70969			
ILLINOIS FED. AID PROJECT										

GENERAL NOTES

G.N.-100
ENGLISH UNITS OF MEASUREMENT SHALL GOVERN OVER AND SUPERSEDE ANY METRIC UNITS SHOWN IN THIS CONTRACT. WHERE INCLUDED, METRIC UNITS ARE FOR INFORMATION ONLY.

G.N.-100A
ELECTRONIC FILES AND/OR ELECTRONIC SURVEY INFORMATION INCLUDING CADD FILES WILL NOT BE AVAILABLE TO THE CONTRACTOR.

G.N.-105.09A
ALL ELEVATIONS SHOWN IN THE PLANS ARE BASED ON NORTH AMERICAN VERTICAL DATUM OF 1988. (NAVD 88)

G.N.-202
GRADING SHALL BE DONE BY HAND AROUND LIGHT POLES, UTILITY POLES, SIGN POSTS, SHRUBS, TREES OR OTHER NATURAL OR MAN-MADE OBJECTS WHERE SHALLOW FILLS OR CUTS ARE ADJACENT TO THE ITEMS. IT IS THE INTENT THAT THE LIMITS OF CONSTRUCTION BE SUCH AS TO PRESERVE IN THE ORIGINAL STATE AS MUCH AREA OF TEMPORARY EASEMENTS AS POSSIBLE. THE DECISION AS TO ITEMS TO REMAIN IN PLACE SHALL BE AS DIRECTED BY THE ENGINEER.

THIS WORK WILL NOT BE PAID FOR SEPARATELY, BUT SHALL BE CONSIDERED INCLUDED IN THE CONTRACT UNIT PRICE PER CUBIC YARD FOR EARTH EXCAVATION AND NO ADDITIONAL COMPENSATION WILL BE ALLOWED.

G.N.-280
TEMPORARY EROSION CONTROL SEEDING IS INCLUDED IN THIS CONTRACT TO SEED DISTURBED EARTH DURING TIME PERIODS WHEN PERMANENT SEEDING IS NOT ALLOWED. SOME OR ALL OF THE TEMPORARY EROSION CONTROL SEEDING WILL BE DELETED IF IT IS POSSIBLE TO PLACE PERMANENT SEEDING ON EARTH AT THE TIME OF THEIR COMPLETION.

G.N.-440B
THE EXISTING TIE BARS BETWEEN THE EXISTING PAVEMENT AND EXISTING MEDIANS, GUTTERS AND/OR COMBINATION CURB AND GUTTERS THAT ARE FOUND SUITABLE FOR REUSE SHALL BE CLEANED, STRAIGHTENED AND INCORPORATED INTO THE NEW CONSTRUCTION. ANY EXISTING TIE BARS THAT ARE FOUND UNSUITABLE TO BE INCORPORATED INTO THE PROPOSED CONSTRUCTION DUE TO EXCESSIVE RUSTING OR DISTRESS SHALL BE REMOVED FLUSH WITH THE FACE OF THE EXISTING CONCRETE AND DISPOSED OF OUTSIDE THE LIMITS OF THE RIGHT-OF-WAY IN ACCORDANCE WITH ARTICLE 202.03 OF THE STANDARD SPECIFICATIONS.

THIS WORK WILL NOT BE PAID FOR SEPARATELY BUT SHALL BE CONSIDERED INCLUDED IN THE VARIOUS REMOVAL PAY ITEMS AND NO ADDITIONAL COMPENSATION WILL BE ALLOWED.

G.N.-442B – PATCHING SCHEDULES
THE PATCHING SCHEDULES INCLUDED IN THE PLANS REPRESENT THE BEST INFORMATION AVAILABLE AT THE TIME OF COMPLETION OF THE PLANS FOR LETTING. VARIATIONS IN LOCATION AND SIZES OF BOTH FULL-DEPTH AND PARTIAL-DEPTH PATCHES MAY OCCUR.

G.N.-550
BEFORE ORDERING STORM SEWERS, THE CONTRACTOR SHALL CONSULT THE ENGINEER FOR THE EXACT LENGTHS.

G.N.-1004.01
COARSE AGGREGATE GRADATION CA-10 MAY BE USED WHENEVER COARSE AGGREGATE CA-6 IS SPECIFIED IN THE STANDARD SPECIFICATIONS.

NO COMMITMENTS

G.N.-105.07B
EXISTING STATE-OWNED AND MAINTAINED UTILITY LINES ARE SHOWN ON THE PLANS TO INDICATE THEIR PRESENCE AND APPROXIMATE LOCATION. THE CONTRACTOR SHALL SECURE AN APPROVED LOCATING FIRM TO LOCATE STATE-OWNED UTILITIES PRIOR TO COMMENCING ANY EXCAVATION IN THE VICINITY OF THESE LINES IN ACCORDANCE TO SECTION 803 OF THE STANDARD SPECIFICATIONS. SHOULD ANY OF THE LINES BE DAMAGED BY THE CONTRACTOR'S OPERATION, THE CONTRACTOR SHALL REPAIR THEM TO THE SATISFACTION OF THE ENGINEER AT NO COST TO THE STATE.

ALSO THERE MAY BE UTILITIES PRESENT WHICH WERE INSTALLED BY THE STATE BUT ARE MAINTAINED BY OTHERS (CITY, TOWN, ETC.) THE APPROXIMATE LOCATIONS OF THESE LINES ARE ALSO SHOWN ON THE PLANS ALONG WITH THE NAME OF THE MAINTAINING AGENCY. THE CONTRACTOR SHALL COORDINATE THE LOCATION OF THESE LINES WITH THE LOCAL AGENCY PRIOR TO COMMENCING ANY EXCAVATION OR BORING IN THEIR VICINITY. SHOULD THESE LINES BE DAMAGED BY THE CONTRACTOR'S OPERATIONS, THE CONTRACTOR SHALL REPAIR THEM TO THE SATISFACTION OF, AND AT NO COST TO, THE LOCAL AGENCY AND THE STATE.

G.N.-107.37
UTILITY LINES WERE PLOTTED FROM INFORMATION FURNISHED BY THE VARIOUS UTILITY COMPANIES INVOLVED (QUALITY LEVEL C &/OR QUALITY LEVEL D) AND THE ACCURACY SHOULD BE CONSIDERED APPROXIMATE ONLY.

UTILITY COMPANIES MAY BE ADJUSTING THEIR FACILITIES DURING CONSTRUCTION. THE CONTRACTOR SHALL COOPERATE WITH THESE ORGANIZATIONS WHILE THESE ADJUSTMENTS ARE BEING PERFORMED. J.U.L.I.E. - JOINT UTILITY LOCATION INFORMATION FOR EXCAVATORS SYSTEM (800) 892-0123 OR 811.

FILE NAME =	USER NAME = hoganbj	DESIGNED - _____	REVISED - BJH 4/5/2012	STATE OF ILLINOIS DEPARTMENT OF TRANSPORTATION	GENERAL NOTES	F.A.I. RTE.	SECTION	COUNTY	TOTAL SHEETS	SHEET NO.	
oz:\pwork\puidot\hoganbj\08294537\057069-sht-gennote.dgn		DRAWN - _____	REVISED - _____			74	REST AREA REPAIR 2012-2	VERMILION	19	3	
PLOT SCALE = 100.0000' / in.		CHECKED - _____	REVISED - _____			CONTRACT NO. 70969					
PLOT DATE = 4/9/2012		DATE - _____	REVISED - _____			ILLINOIS FED. AID PROJECT					
				SCALE: _____ SHEET NO. 1 OF 1 SHEETS STA. _____ TO STA. _____							

LOCATION OF WORK: FAI 74
RURAL INTERSTATE
REST AREA REPAIR
AT SALT KETTLE REST AREA
VERMILION COUNTY
FUNDING BREAKOUT: 100% STATE
CONSTRUCTION TYPE CODE: 0021

LOCATION OF WORK: FAI 74
RURAL INTERSTATE
REST AREA REPAIR
AT SALT KETTLE REST AREA
VERMILION COUNTY
FUNDING BREAKOUT: 100% STATE
CONSTRUCTION TYPE CODE: 0021

CODE NO.	ITEM	UNIT	TOTAL QUANTITY
*X0327464	DRINKING FOUNTAIN REMOVAL AND REPLACEMENT	EACH	2.0
20200100	EARTH EXCAVATION	CU YD	240.0
20800150	TRENCH BACKFILL	CU YD	35.0
25000110	SEEDING, CLASS 1A	ACRE	0.25
25000400	NITROGEN FERTILIZER NUTRIENT	POUND	25.0
25000500	PHOSPHORUS FERTILIZER NUTRIENT	POUND	25.0
25000600	POTASSIUM FERTILIZER NUTRIENT	POUND	25.0
25100115	MULCH, METHOD 2	ACRE	0.25
28000250	TEMPORARY EROSION CONTROL SEEDING	POUND	25.0
31101200	SUBBASE GRANULAR MATERIAL, TYPE B 4"	SQ YD	1,065.0
35400500	PORTLAND CEMENT CONCRETE BASE COURSE WIDENING 10"	SQ YD	180.0
42400200	PORTLAND CEMENT CONCRETE SIDEWALK 5 INCH	SQ FT	4,685.0
42400800	DETECTABLE WARNINGS	SQ FT	60.0
44000500	COMBINATION CURB AND GUTTER REMOVAL	FOOT	425.0

* DENOTES SPECIALTY ITEM

CODE NO.	ITEM	UNIT	TOTAL QUANTITY
44000600	SIDEWALK REMOVAL	SQ FT	4,685.0
44004250	PAVED SHOULDER REMOVAL	SQ YD	180.0
44200970	CLASS B PATCHES, TYPE II, 10 INCH	SQ YD	1,000.0
44200974	CLASS B PATCHES, TYPE III, 10 INCH	SQ YD	25.0
44200976	CLASS B PATCHES, TYPE IV, 10 INCH	SQ YD	405.0
44201299	DOWEL BARS 1 1/2"	EACH	2,865.0
44213100	PAVEMENT FABRIC	SQ YD	430.0
44213198	TIE BARS 1/2"	EACH	545.0
44213200	SAW CUTS	FOOT	7,160.0
48101500	AGGREGATE SHOULDERS, TYPE B 6"	SQ YD	25.0
48300500	PORTLAND CEMENT CONCRETE SHOULDERS 10"	SQ YD	290.0
54248510	CONCRETE COLLAR	CU YD	0.5
550A0050	STORM SEWERS, CLASS A, TYPE 1 12"	FOOT	100.0
55100500	STORM SEWER REMOVAL 12"	FOOT	100.0

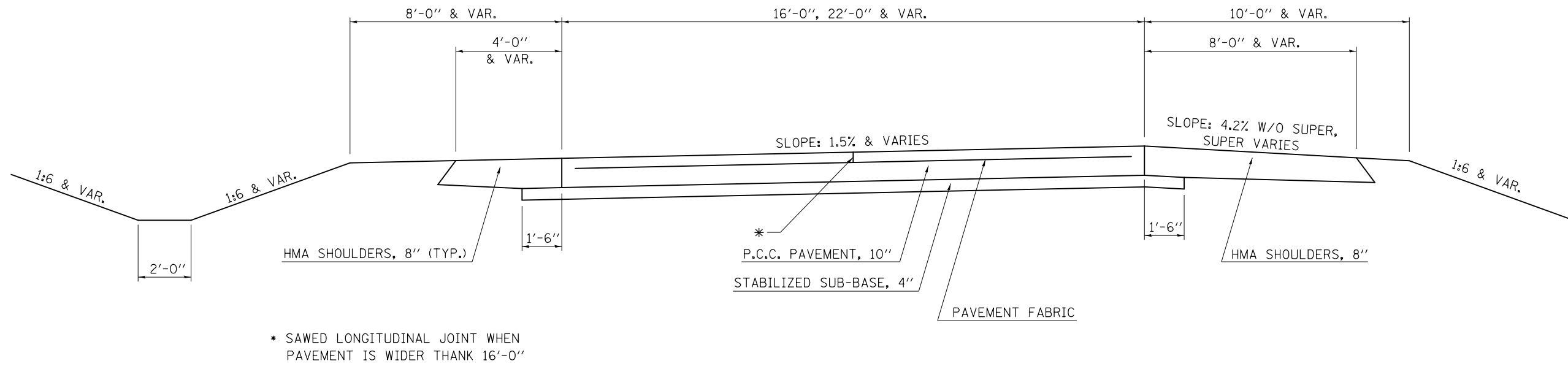
* DENOTES SPECIALTY ITEM

LOCATION OF WORK: FAI 74
RURAL INTERSTATE
REST AREA REPAIR
AT SALT KETTLE REST AREA
VERMILION COUNTY
FUNDING BREAKOUT: 100% STATE
CONSTRUCTION TYPE CODE: 0021

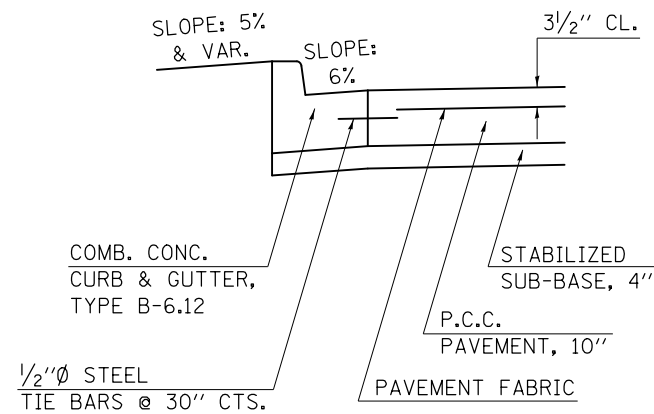
CODE NO.	ITEM	UNIT	TOTAL QUANTITY
60207905	CATCH BASINS, TYPE C, TYPE 11 FRAME AND GRATE	EACH	2.0
60218400	MANHOLES, TYPE A, 4' -DIAMETER, TYPE 1 FRAME, CLOSED LID	EACH	1.0
60500050	REMOVING CATCH BASINS	EACH	2.0
60603800	COMBINATION CONCRETE CURB AND GUTTER, TYPE B-6.12	FOOT	398.0
67100100	MOBILIZATION	L SUM	1.0
X7010216	TRAFFIC CONTROL AND PROTECTION, (SPECIAL)	L SUM	1.0
* XX004101	ORNAMENTAL METAL FENCE	FOOT	186.0
Z0022800	FENCE REMOVAL	FOOT	186.0
* DENOTES SPECIALTY ITEM			

1 EXISTING TYPICAL CROSS SECTION

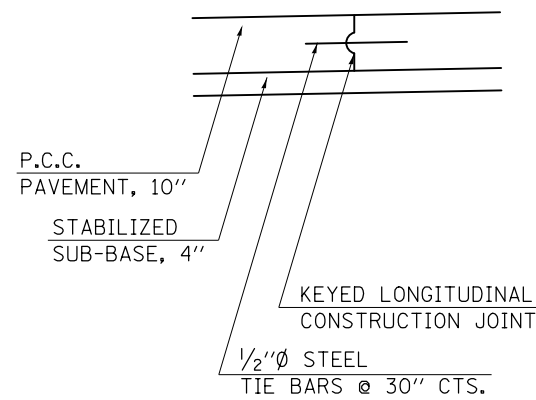
STATION	TO	STATION
100+00.00		160+80.55 (TRUCK)
207+88.89		222+43.72 (AUTO)



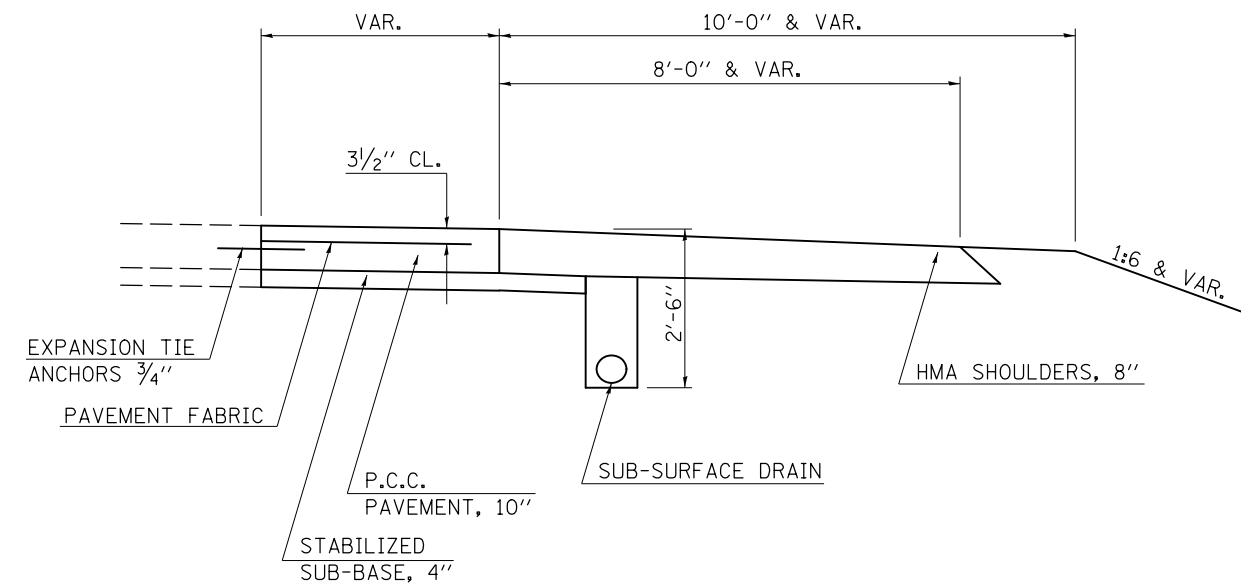
DETAIL OF P.C.C. PAVEMENT ADJACENT TO COMB. CONC. CURB & GUTTER TYPE B-6.12



DETAIL OF TRUCK RAMP ABUTTING PARKING PAVEMENT



DETAIL OF PREVIOUSLY WIDENED P.C.C. PAVEMENT



FILE NAME =	USER NAME = hogenbj	DESIGNED - BJM	REVISED -
et:\pwork\pwork\hogenbj\d0294537\0570169-sht-typicals.dgn		DRAWN -	REVISED -
	PLOT SCALE = 40.0000' / in.	CHECKED -	REVISED -
	PLOT DATE = 3/5/2012	DATE - 02/14/12	REVISED -

STATE OF ILLINOIS
DEPARTMENT OF TRANSPORTATION

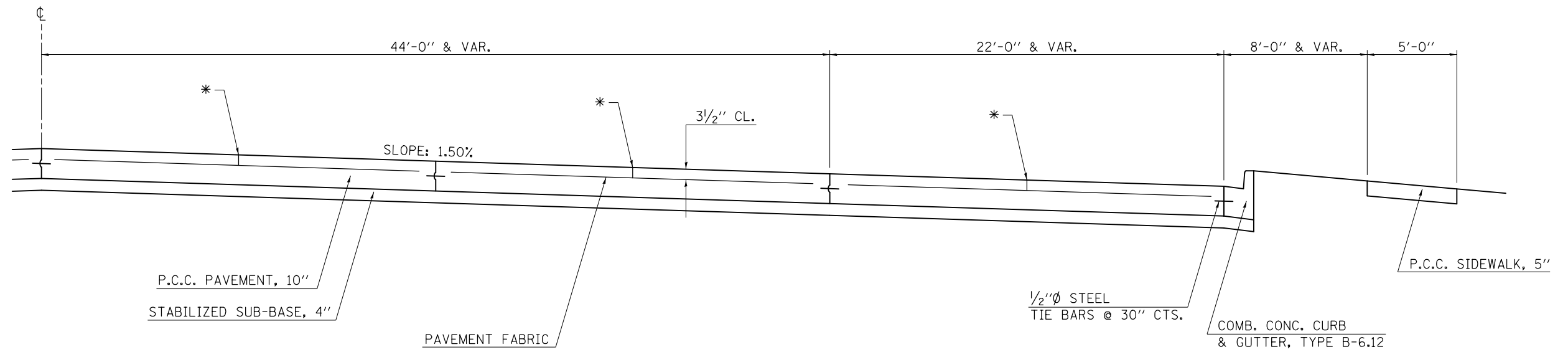
TYPICAL CROSS SECTIONS			
SCALE:	SHEET 1	OF 2 SHEETS	STA. TO STA.

F.A.I. RTE.	SECTION	COUNTY	TOTAL SHEETS	SHEET NO.
74	REST AREA REPAIR 2012-2	VERMILION	19	6
CONTRACT NO. 70969				
ILLINOIS FED. AID PROJECT				

② EXISTING TYPICAL CROSS SECTION

TRUCK PARKING AREAS

EAST OF CENTERLINE

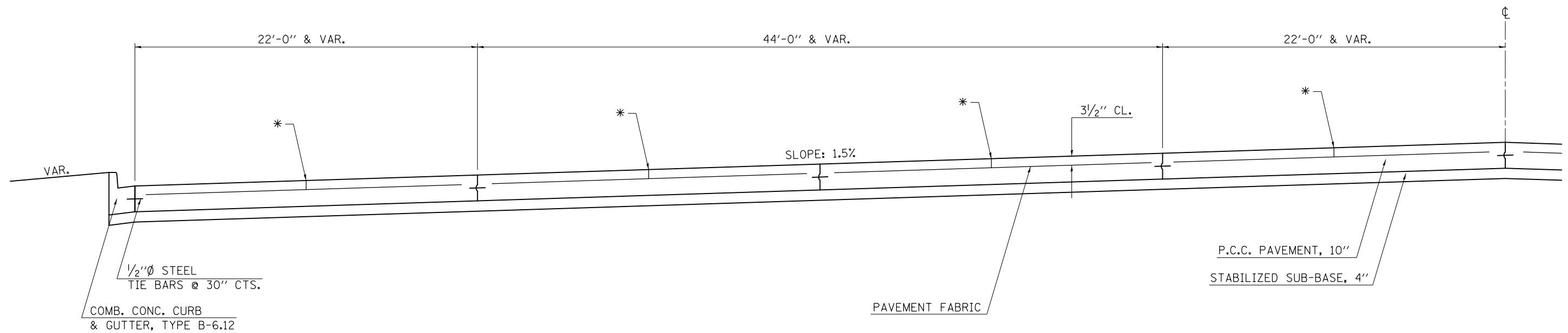


LEGEND

* SAWED LONGITUDINAL JOINT

{ KEYED LONGITUDINAL JOINT

WEST OF CENTERLINE



FILE NAME =	USER NAME = hogenbj	DESIGNED - BJM	REVISED -	STATE OF ILLINOIS DEPARTMENT OF TRANSPORTATION	TYPICAL CROSS SECTIONS			F.A.I. RTE.	SECTION	COUNTY	TOTAL SHEETS	SHEET NO.
et:\pwork\pwork\hogenbj\d0294537\0570169-sht-typical.s.dgn	PLOT SCALE = 40.0000' / in.	DRAWN -	REVISED -		74	REST AREA REPAIR 2012-2	VERMILION	19	7			
PLOT DATE = 3/5/2012	DATE - 02/14/12	CHECKED -	REVISED -		SCALE: SHEET 2 OF 2 SHEETS STA. TO STA.			CONTRACT NO. 70969				
		DATE -	REVISED -		ILLINOIS FED. AID PROJECT							

SCHEDULES OF QUANTITIES

EARTH EXCAVATION AND SEEDING BY LOCATION

LOCATION NUMBER	EARTH EXCAVATION (CU YD) 20200100	Seeding, Class 1A (ACRE) 25000110	Nitrogen Fert. Nutr. (POUNDS) 25000400	Phosphorous Fert. Nutr. (POUNDS) 25000500	Potassium Fert. Nutr. (POUNDS) 25000600	Mulch Method 2 (ACRE) 25100115	Temp. Eros. Contr. Seeding (POUNDS) 28000250
LOCATION #1	21.8	0.00000	0.00000	0.00000	0.00000	0.00000	0.00000
LOCATION #2	24.5	0.00344	0.30960	0.30960	0.30960	0.00344	0.34400
LOCATION #3	0.5	0.00114	0.10260	0.10260	0.10260	0.00114	0.11400
LOCATION #4	11.3	0.00921	0.82890	0.82890	0.82890	0.00921	0.92100
LOCATION #5	0.9	0.00126	0.11340	0.11340	0.11340	0.00126	0.12600
LOCATION #6	0.6	0.00171	0.15390	0.15390	0.15390	0.00171	0.17100
LOCATION #7	0.3	0.00201	0.18090	0.18090	0.18090	0.00201	0.20100
LOCATION #8	59.6	0.00263	0.23670	0.23670	0.23670	0.00263	0.26300
LOCATION #9	0.1	0.00122	0.10980	0.10980	0.10980	0.00122	0.12200
LOCATION #10	0.2	0.00177	0.15930	0.15930	0.15930	0.00177	0.17700
LOCATION #11	0.6	0.00000	0.00000	0.00000	0.00000	0.00000	0.00000
LOCATION #12	108.7	0.05840	5.25600	5.25600	5.25600	0.05840	5.84000
LOCATION #13	9.3	0.00670	0.60300	0.60300	0.60300	0.00670	0.67000
TOTALS	238.4	0.08949	8.0541	8.0541	8.0541	0.08949	8.949
ROUND TO	240.0	0.25	25	25	25	0.25	25

SUB-BASE AND SIDEWALK BY LOCATION

LOCATION NUMBER	SUBBASE GRAN MATL, TYPE B 4" (SQ YD) 31101200	PCC SIDEWALK 5" (SQ FT) 42400200	DETECT. WARNINGS (SQ FT) 42400800	SIDEWALK REMOVAL (SQ FT) 44000600	DRINKING FOUNTAIN REM. & REPL. (EACH) #5000500
LOCATION #1	196.9	1769.3	12.0	1769.3	1.0
LOCATION #2	220.8	1998.6	12.0	1998.6	1.0
LOCATION #3	4.4	36.6	12.0	36.6	0.0
LOCATION #4	102.0	752.0	12.0	752.0	0.0
LOCATION #5	7.5	64.8	0.0	64.8	0.0
LOCATION #6	4.8	40.2	12.0	40.2	0.0
LOCATION #7	2.3	18.8	0.0	18.8	0.0
LOCATION #8	236.3	0.0	0.0	0.0	0.0
LOCATION #9	1.0	0.0	0.0	0.0	0.0
LOCATION #10	1.9	0.0	0.0	0.0	0.0
LOCATION #11	5.1	0.0	0.0	0.0	0.0
LOCATION #12	247.1	0.0	0.0	0.0	0.0
LOCATION #13	33.0	0.0	0.0	0.0	0.0
TOTALS	1063.1	4680.3	60.0	4680.3	2.0
ROUND TO	1065.0	4685.0	60.0	4685.0	2.0

SCHEDULES OF QUANTITIES

WIDENING, SHOULDERS, AND CURB & GUTTER BY LOCATION

LOCATION NUMBER	PCC BASE COURSE WIDENING 10" (SQ YD) 35400500	COMBINATION CURB AND GUTTER REM. (FOOT) 44000500	PAVED SHOULDER REMOVAL (SQ YD) 44004250	AGGREGATE SHOULDERS, TYPE B 6" (SQ YD) 48101500	PCC SHOULDERS, 10" (SQ YD) 48300500	CCC&G TYPE B-6.12 (FOOT) 60603800
LOCATION #1	0.0	0.0	0.0	0.0	0.0	0.0
LOCATION #2	0.0	0.0	0.0	0.0	0.0	0.0
LOCATION #3	0.0	0.0	0.0	0.0	0.0	0.0
LOCATION #4	0.0	103.0	0.0	0.0	0.0	103.0
LOCATION #5	0.0	0.0	0.0	0.0	0.0	0.0
LOCATION #6	0.0	0.0	0.0	0.0	0.0	0.0
LOCATION #7	0.0	0.0	0.0	0.0	0.0	0.0
LOCATION #8	0.0	0.0	116.2	0.0	236.3	0.0
LOCATION #9	0.0	6.0	0.0	0.0	0.0	6.0
LOCATION #10	0.0	11.0	0.0	0.0	0.0	11.0
LOCATION #11	0.0	29.0	0.0	0.0	0.0	29.0
LOCATION #12	153.6	268.0	0.0	0.0	0.0	248.9
LOCATION #13	22.0	0.0	61.1	21.5	50.9	0.0
TOTALS	175.6	417.0	177.3	21.5	287.2	397.9
ROUND TO	180.0	425.0	180.0	25.0	290.0	398.0

DRAINAGE STRUCTURES

ITEM	STATION	OFFSET	TOM ELEVATION	TOP PAD ELEVATION	OUTLET INVERT ELEVATION	DEPTH (FT)	CATCH BASINS, TYPE C, TYPE 11 FRAME & GRATE (EACH) 60207905	MANHOLES, TYPE A, 4'-DIAMETER, TYPE 1 FRAME, CLOSED LID (EACH) 60218400	REMOVING CATCH BASINS (EACH) 60500050
CATCH BASIN #1	220+01	22.69' LT	641.81	636.75	638.00	5.06	1.0		1.0
MANHOLE #1	220+01	17.55' LT	642.01	637.77	637.94	4.24		1.0	
CATCH BASIN #2	221+16	22.96' LT	642.28	637.30	638.55	4.98	1.0		1.0
TOTALS:							2.0	1.0	2.0

STORM SEWER

STATION	OFFSET	INVERT ELEVATION	TO	STATION	OFFSET	INVERT ELEVATION	STORM SEWERS, CLASS A, TYPE 1 12" (FOOT) 550A0050	STORM SEWER REMOVAL, 12" (FOOT) 5510050	TRENCH BACKFILL (CU YD) 20800150
220+01	17.55' LT	637.94		219+96	15.5' LT	637.92	4.0	4.0	2.9
220+01	22.69' LT	638.00		220+01	17.55' LT	637.98	3.0	0.0	2.2
220+05	12.80' LT	UNKNOWN		220+01	17.55' LT	UNKNOWN	4.0	4.0	2.9
221+16	22.96' LT	638.55		220+01	17.55' LT	638.02	88.0	92.0	24.0
TOTALS:							99.0	100.0	32.0
ROUND TO:							100.0	100.0	35.0

SCHEDULES OF QUANTITIES

CLASS B PATCHING, 10"

STATION	DIRECTION	LENGTH (ft)	WIDTH (ft)	PATCH AREA				DOWEL BARS 44201299 (each)	SAW CUTS 44213200 (ft)	TIE BARS 1/2" 44213198 (each)	PAVEMENT FABRIC 44213100 (sq. yd)
				TYPE I 10" (sq. yd)	TYPE II 10" (sq. yd)	TYPE III 10" (sq. yd)	TYPE IV 10" (sq. yd)				
108+38.00	Middle Truck	6	16	0.0	10.7	0.0	0.0	28	60.0	0	0.0
108+80.00	Middle Truck	6	16	0.0	10.7	0.0	0.0	28	60.0	0	0.0
109+59.00	Middle Truck	6	16	0.0	10.7	0.0	0.0	28	60.0	0	0.0
109+93.00	Middle Truck	6	16	0.0	10.7	0.0	0.0	28	60.0	0	0.0
110+37.00	Middle Truck	6	16	0.0	10.7	0.0	0.0	28	60.0	0	0.0
110+81.00	Middle Truck	6	16	0.0	10.7	0.0	0.0	28	60.0	0	0.0
111+20.00	Middle Truck	6	16	0.0	10.7	0.0	0.0	28	60.0	0	0.0
111+99.00	Middle Truck	6	16	0.0	10.7	0.0	0.0	28	60.0	0	0.0
112+37.00	Middle Truck	6	16	0.0	10.7	0.0	0.0	28	60.0	0	0.0
113+17.00	Middle Truck	6	16	0.0	10.7	0.0	0.0	28	60.0	0	0.0
113+80.00	Middle Truck	6	16	0.0	10.7	0.0	0.0	28	60.0	0	0.0
113+91.00	Middle Truck	6	16	0.0	10.7	0.0	0.0	28	60.0	0	0.0
114+15.00	Middle Truck	6	8	0.0	5.3	0.0	0.0	12	36.0	0	0.0
114+33.00	Middle Truck	6	8	0.0	5.3	0.0	0.0	12	36.0	0	0.0
114+54.00	Middle Truck	6	8	0.0	5.3	0.0	0.0	12	36.0	0	0.0
114+75.00	Middle Truck	6	8	0.0	5.3	0.0	0.0	12	36.0	0	0.0
114+94.00	Middle Truck	6	8	0.0	5.3	0.0	0.0	12	36.0	0	0.0
114+96.00	Middle Truck	162	6	0.0	0.0	0.0	108.0	48	342.0	162	108.0
115+12.00	Middle Truck	6	8	0.0	5.3	0.0	0.0	12	36.0	0	0.0
115+90.00	Middle Truck	6	16	0.0	10.7	0.0	0.0	28	60.0	0	0.0
116+13.00	Middle Truck	6	12	0.0	8.0	0.0	0.0	20	48.0	0	0.0
116+47.00	Middle Truck	6	11	0.0	7.3	0.0	0.0	18	45.0	0	0.0
116+89.00	Middle Truck	6	16	0.0	10.7	0.0	0.0	28	60.0	0	0.0
117+12.00	Middle Truck	6	11	0.0	7.3	0.0	0.0	18	45.0	0	0.0
117+49.00	Middle Truck	6	11	0.0	7.3	0.0	0.0	18	45.0	0	0.0
119+31.00	Middle Truck	6	11	0.0	7.3	0.0	0.0	18	45.0	0	0.0
119+50.00	Middle Truck	6	12	0.0	8.0	0.0	0.0	20	48.0	0	0.0
119+74.00	Middle Truck	6	12	0.0	8.0	0.0	0.0	20	48.0	0	0.0
119+91.00	Middle Truck	6	12	0.0	8.0	0.0	0.0	20	48.0	0	0.0
120+11.00	Middle Truck	6	12	0.0	8.0	0.0	0.0	20	48.0	0	0.0
120+47.00	Middle Truck	6	12	0.0	8.0	0.0	0.0	20	48.0	0	0.0
121+00.00	Middle Truck	6	11	0.0	7.3	0.0	0.0	18	45.0	0	0.0
121+24.00	Middle Truck	6	12	0.0	8.0	0.0	0.0	20	48.0	0	0.0
121+47.00	Middle Truck	6	11	0.0	7.3	0.0	0.0	18	45.0	0	0.0
121+48.00	Middle Truck	6	11	0.0	7.3	0.0	0.0	18	45.0	0	0.0
121+13.00	Middle Truck	6	13	0.0	8.7	0.0	0.0	22	51.0	0	0.0
121+65.00	Middle Truck	6	13	0.0	8.7	0.0	0.0	22	51.0	0	0.0
121+79.00	Middle Truck	6	22	0.0	14.7	0.0	0.0	40	78.0	0	0.0
122+30.00	Middle Truck	6	8	0.0	5.3	0.0	0.0	12	36.0	0	0.0
122+94.00	Middle Truck	6	8	0.0	5.3	0.0	0.0	12	36.0	0	0.0
122+94.00	Middle Truck	6	8	0.0	5.3	0.0	0.0	12	36.0	0	0.0
122+73.00	Middle Truck	6	8	0.0	5.3	0.0	0.0	12	36.0	0	0.0
122+73.00	Middle Truck	6	8	0.0	5.3	0.0	0.0	12	36.0	0	0.0
122+54.00	Middle Truck	6	8	0.0	5.3	0.0	0.0	12	36.0	0	0.0
122+54.00	Middle Truck	6	8	0.0	5.3	0.0	0.0	12	36.0	0	0.0
122+79.00	Middle Truck	98	6	0.0	0.0	0.0	65.3	32	214.0	98	65.3

SCHEDULES OF QUANTITIES

CLASS B PATCHING, 10" (CONTINUED)

STATION	DIRECTION	LENGTH (ft)	WIDTH (ft)	PATCH AREA				DOWEL BARS 44201299 (each)	SAW CUTS 44213200 (ft)	TIE BARS 1/2" 44213198 (each)	PAVEMENT FABRIC 44213100 (sq. yd)
				TYPE I 10" (sq. yd)	TYPE II 10" (sq. yd)	TYPE III 10" (sq. yd)	TYPE IV 10" (sq. yd)				
123+13.00	Middle Truck	6	7.5	0.0	5.0	0.0	0.0	11	34.5	0	0.0
123+13.00	Middle Truck	8	8	0.0	7.1	0.0	0.0	12	40.0	0	0.0
123+35.00	Middle Truck	44	6	0.0	0.0	0.0	29.3	16	106.0	44	29.3
124+05.00	Middle Truck	6	16	0.0	10.7	0.0	0.0	28	60.0	0	0.0
124+27.00	Middle Truck	6	16	0.0	10.7	0.0	0.0	28	60.0	0	0.0
125+16.00	Middle Truck	6	16	0.0	10.7	0.0	0.0	28	60.0	0	0.0
125+54.00	Middle Truck	6	16	0.0	10.7	0.0	0.0	28	60.0	0	0.0
125+96.00	Middle Truck	6	16	0.0	10.7	0.0	0.0	28	60.0	0	0.0
126+40.00	Middle Truck	6	16	0.0	10.7	0.0	0.0	28	60.0	0	0.0
128+85.00	Middle Truck	6	16	0.0	10.7	0.0	0.0	28	60.0	0	0.0
129+79.00	Middle Truck	6	16	0.0	10.7	0.0	0.0	28	60.0	0	0.0
130+18.00	Middle Truck	6	16	0.0	10.7	0.0	0.0	28	60.0	0	0.0
130+66.00	Middle Truck	6	16	0.0	10.7	0.0	0.0	28	60.0	0	0.0
131+11.00	Middle Truck	6	16	0.0	10.7	0.0	0.0	28	60.0	0	0.0
131+49.00	Middle Truck	6	16	0.0	10.7	0.0	0.0	28	60.0	0	0.0
131+71.00	Middle Truck	6	16	0.0	10.7	0.0	0.0	28	60.0	0	0.0
131+86.00	Middle Truck	6	16	0.0	10.7	0.0	0.0	28	60.0	0	0.0
132+21.00	Middle Truck	6	16	0.0	10.7	0.0	0.0	28	60.0	0	0.0
132+33.00	Middle Truck	6	16	0.0	10.7	0.0	0.0	28	60.0	0	0.0
133+12.00	Middle Truck	6	16	0.0	10.7	0.0	0.0	28	60.0	0	0.0
133+33.00	Middle Truck	6	16	0.0	10.7	0.0	0.0	28	60.0	0	0.0
133+95.00	Middle Truck	6	16	0.0	10.7	0.0	0.0	28	60.0	0	0.0
136+68.00	Middle Truck	6	16	0.0	10.7	0.0	0.0	28	60.0	0	0.0
137+03.00	Middle Truck	6	16	0.0	10.7	0.0	0.0	28	60.0	0	0.0
137+20.00	Middle Truck	6	16	0.0	10.7	0.0	0.0	28	60.0	0	0.0
137+40.00	Middle Truck	6	16	0.0	10.7	0.0	0.0	28	60.0	0	0.0
137+59.00	Middle Truck	6	16	0.0	10.7	0.0	0.0	28	60.0	0	0.0
137+80.00	Middle Truck	6	16	0.0	10.7	0.0	0.0	28	60.0	0	0.0
137+98.00	Middle Truck	6	16	0.0	10.7	0.0	0.0	28	60.0	0	0.0
138+33.00	Middle Truck	6	16	0.0	10.7	0.0	0.0	28	60.0	0	0.0
138+54.00	Middle Truck	6	16	0.0	10.7	0.0	0.0	28	60.0	0	0.0
138+71.00	Middle Truck	6	16	0.0	10.7	0.0	0.0	28	60.0	0	0.0
138+91.00	Middle Truck	6	16	0.0	10.7	0.0	0.0	28	60.0	0	0.0
139+11.00	Middle Truck	6	16	0.0	10.7	0.0	0.0	28	60.0	0	0.0
139+33.00	Middle Truck	6	16	0.0	10.7	0.0	0.0	28	60.0	0	0.0
139+88.00	Middle Truck	6	16	0.0	10.7	0.0	0.0	28	60.0	0	0.0
140+07.00	Middle Truck	6	16	0.0	10.7	0.0	0.0	28	60.0	0	0.0
140+26.00	Middle Truck	6	16	0.0	10.7	0.0	0.0	28	60.0	0	0.0
140+43.00	Middle Truck	6	16	0.0	10.7	0.0	0.0	28	60.0	0	0.0
140+64.00	Middle Truck	6	16	0.0	10.7	0.0	0.0	28	60.0	0	0.0
117+31.00	Right Truck	6	22	0.0	14.7	0.0	0.0	40	78.0	0	0.0
117+71.00	Right Truck	6	12	0.0	8.0	0.0	0.0	20	48.0	0	0.0
118+06.00	Right Truck	6	8	0.0	5.3	0.0	0.0	12	36.0	0	0.0
118+06.00	Right Truck	6	8	0.0	5.3	0.0	0.0	12	36.0	0	0.0
118+30.00	Right Truck	83	6	0.0	0.0	0.0	55.3	28	184.0	83	55.3
118+31.00	Right Truck	6	8	0.0	5.3	0.0	0.0	12	36.0	0	0.0
118+51.00	Right Truck	6	8	0.0	5.3	0.0	0.0	12	36.0	0	0.0

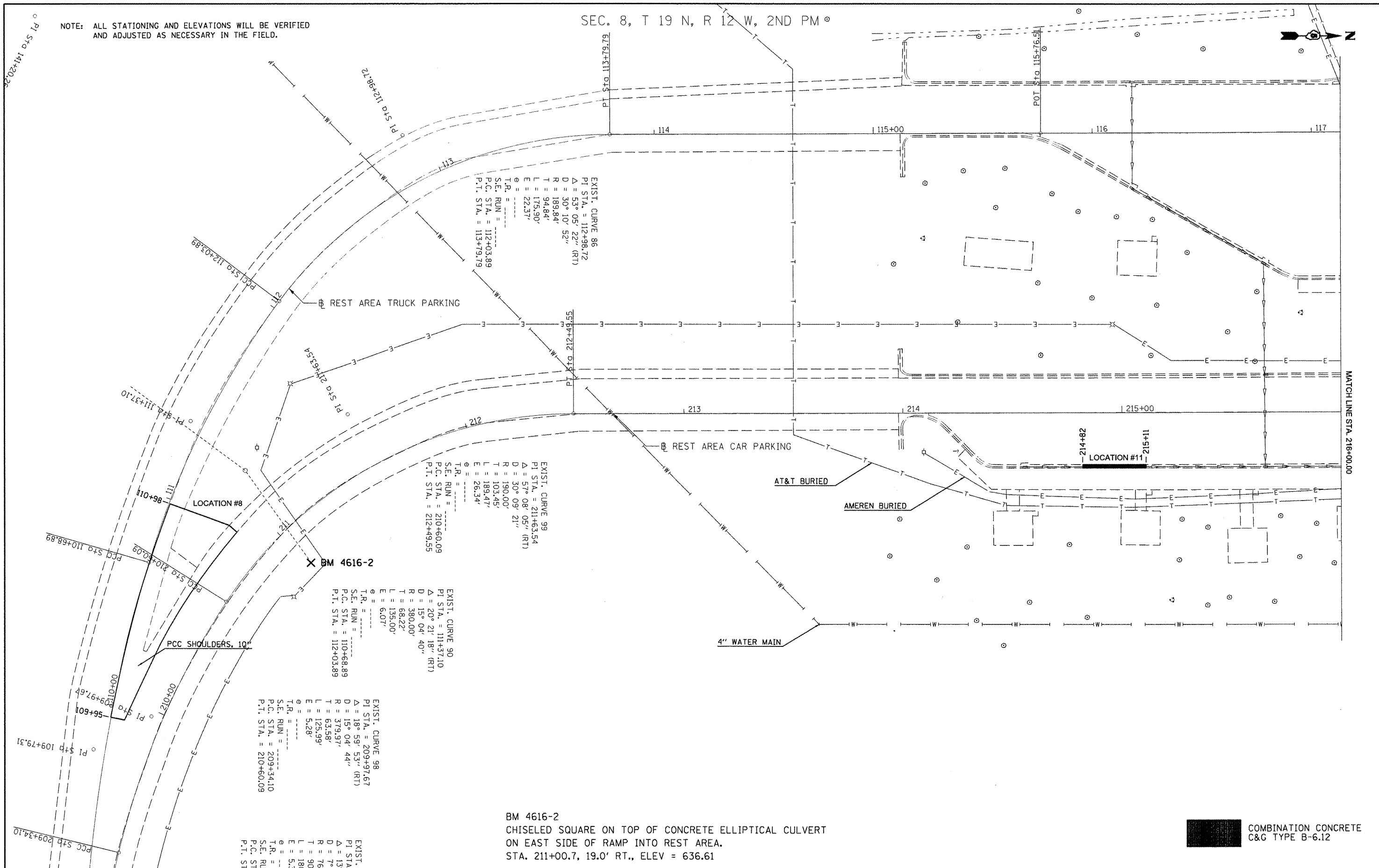
SCHEDULES OF QUANTITIES

CLASS B PATCHING, 10" (CONTINUED)

STATION	DIRECTION	LENGTH (ft)	WIDTH (ft)	PATCH AREA				DOWEL BARS 44201299 (each)	SAW CUTS 44213200 (ft)	TIE BARS 1/2" 44213198 (each)	PAVEMENT FABRIC 44213100 (sq. yd)
				TYPE I 10" (sq. yd)	TYPE II 10" (sq. yd)	TYPE III 10" (sq. yd)	TYPE IV 10" (sq. yd)				
118+52.00	Right Truck	6	8	0.0	5.3	0.0	0.0	12	36.0	0	0.0
118+90.00	Right Truck	6	11	0.0	7.3	0.0	0.0	18	45.0	0	0.0
119+05.00	Right Truck	6	11	0.0	7.3	0.0	0.0	18	45.0	0	0.0
119+29.00	Right Truck	6	22	0.0	14.7	0.0	0.0	40	78.0	0	0.0
119+71.00	Right Truck	6	22	0.0	14.7	0.0	0.0	40	78.0	0	0.0
120+02.00	Right Truck	6	11	0.0	7.3	0.0	0.0	18	45.0	0	0.0
120+07.00	Right Truck	6	11	0.0	7.3	0.0	0.0	18	45.0	0	0.0
120+48.00	Left Truck	6	22	0.0	14.7	0.0	0.0	40	78.0	0	0.0
120+90.00	Right Truck	10	39	0.0	0.0	0.0	43.3	74	137.0	0	43.3
121+11.00	Right Truck	6	22	0.0	14.7	0.0	0.0	40	78.0	0	0.0
121+14.00	Right Truck	6	22	0.0	14.7	0.0	0.0	40	78.0	0	0.0
120+88.00	Left Truck	6	22	0.0	14.7	0.0	0.0	40	78.0	0	0.0
209+90.00	Car	6	16	0.0	10.7	0.0	0.0	28	60.0	0	0.0
217+30.00	Car	6	16	0.0	10.7	0.0	0.0	28	60.0	0	0.0
218+76.00	Car	6	16	0.0	10.7	0.0	0.0	28	60.0	0	0.0
219+18.00	Car	6	16	0.0	10.7	0.0	0.0	28	60.0	0	0.0
219+55.00	Car	6	16	0.0	10.7	0.0	0.0	28	60.0	0	0.0
220+00.00	Car	20	16	0.0	0.0	0.0	35.6	42	88.0	20	35.6
221+16.00	Car	8	16	0.0	14.2	0.0	0.0	28	64.0	0	0.0
118+52.00	Truck Lot	103	2	0.0	0.0	22.9	0.0	0	212.0	103	22.9
123+49.00	Exit Lane	34	18	0.0	0.0	0.0	68.0	64	122.0	34	68.0
GRAND TOTALS				0.0	999.0	22.9	404.9	2861.0	7156.5	544.0	427.8
ROUND TO				0.0	1000.0	25.0	405.0	2865.0	7160.0	545.0	430.0
				(sq. yd)	(sq. yd)	(sq. yd)	(sq. yd)	(each)	(ft)	(each)	(sq. yd)

NOTE: ALL STATIONING AND ELEVATIONS WILL BE VERIFIED AND ADJUSTED AS NECESSARY IN THE FIELD.

SEC. 8, T 19 N, R 12 W, 2ND PM



EXIST. CURVE 86
 PI STA. = 112+98.72
 $\Delta = 53^\circ 05' 22''$ (RT)
 $D = 30^\circ 10' 52''$
 $R = 189.84'$
 $T = 94.84'$
 $L = 175.90'$
 $E = 22.37'$
 $\theta = \dots$
 T.R. = \dots
 S.E. RUN = \dots
 P.C. STA. = 112+03.89
 P.T. STA. = 113+79.79

EXIST. CURVE 99
 PI STA. = 211+63.54
 $\Delta = 30^\circ 09' 21''$
 $D = 30^\circ 09' 21''$
 $R = 190.00'$
 $T = 103.45'$
 $L = 189.47'$
 $E = 26.34'$
 $\theta = \dots$
 T.R. = \dots
 S.E. RUN = \dots
 P.C. STA. = 210+60.09
 P.T. STA. = 212+49.55

EXIST. CURVE 90
 PI STA. = 111+37.10
 $\Delta = 20^\circ 21' 18''$ (RT)
 $D = 15^\circ 04' 40''$
 $R = 380.00'$
 $T = 68.22'$
 $L = 135.00'$
 $E = 6.07'$
 $\theta = \dots$
 T.R. = \dots
 S.E. RUN = \dots
 P.C. STA. = 110+68.89
 P.T. STA. = 112+03.89

EXIST. CURVE 98
 PI STA. = 209+97.67
 $\Delta = 18^\circ 59' 53''$ (RT)
 $D = 15^\circ 04' 44''$
 $R = 379.97'$
 $T = 63.58'$
 $L = 125.99'$
 $E = 5.28'$
 $\theta = \dots$
 T.R. = \dots
 S.E. RUN = \dots
 P.C. STA. = 209+34.10
 P.T. STA. = 210+60.09

EXIST. CURVE 97
 PI STA. = 110+68.89
 $\Delta = 15^\circ 04' 44''$
 $D = 15^\circ 04' 44''$
 $R = 760'$
 $T = 90.4'$
 $L = 180'$
 $E = 5.3'$
 $\theta = \dots$
 T.R. = \dots
 S.E. RUN = \dots
 P.C. STA. = 110+68.89
 P.T. STA. = 112+03.89

BM 4616-2
 CHISELED SQUARE ON TOP OF CONCRETE ELLIPTICAL CULVERT
 ON EAST SIDE OF RAMP INTO REST AREA.
 STA. 211+00.7, 19.0' RT., ELEV = 636.61

COMBINATION CONCRETE
 C&G TYPE B-6.12

FILE NAME =	USER NAME = hogenbj	DESIGNED = BJH 2/9/2012	REVISED = BJH 4/9/2012	STATE OF ILLINOIS DEPARTMENT OF TRANSPORTATION	PLAN SHEET	F.A.L. RTE. =	SECTION =	COUNTY =	TOTAL SHEETS =	SHEET NO. =	
ct:\pwork\pwork\hogenbj\8294537\057669-sht-plan.dgn	PLOT SCALE = 40.0000' / 1"	DRAWN =	REVISED =			74	REST AREA REPAIR 2012-2	VERMILION	19	13	
PLOT DATE = 4/9/2012	CHECKED =	DATE =	REVISED =			CONTRACT NO. 70969					
						ILLINOIS FED. AID PROJECT					

SCALE: SHEET 1 OF 2 SHEETS STA. 209+24.04 TO STA. 216+00

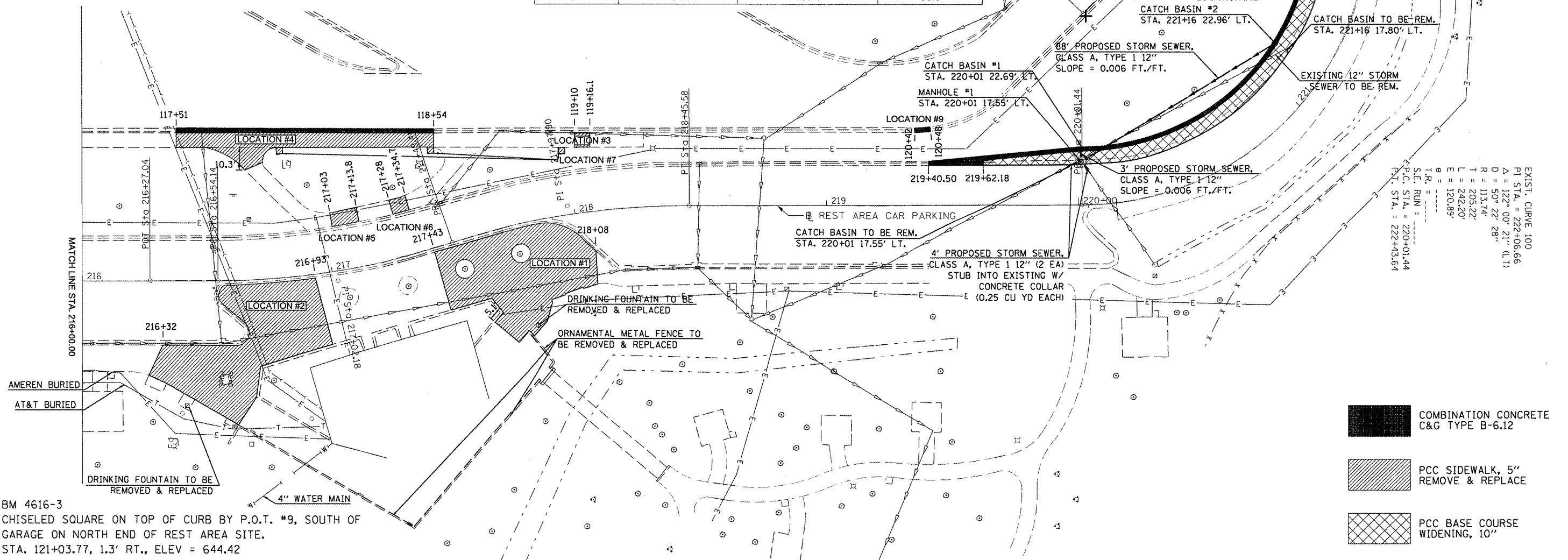
NOTE: ALL STATIONING AND ELEVATIONS WILL BE VERIFIED AND ADJUSTED AS NECESSARY IN THE FIELD.

SEC. 8, T 19 N, R 12 W, 2ND PM



ITEM	STATION	OFFSET	TOM ELEVATION	TOP PAD ELEVATION	OUTLET INVERT ELEVATION	DEPTH (FT)	CATCH BASINS, TYPE C, TYPE 11 FRAME & GRATE (EACH)	MANHOLES, TYPE A, 4'-DIAMETER, TYPE 1 FRAME, CLOSED LID (EACH)	REMOVING CATCH BASINS (EACH)
CATCH BASIN #1	220+01	22.69' LT	641.81	636.75	638.00	5.06	60207905	60218400	60500050
MANHOLE #1	220+01	17.55' LT	642.01	637.77	637.94	4.24		1.0	
CATCH BASIN #2	221+16	22.96' LT	642.28	637.30	638.55	4.98	1.0		1.0
TOTALS:							2.0	1.0	2.0

STATION	OFFSET	INVERT ELEVATION	TO	STATION	OFFSET	INVERT ELEVATION	STORM SEWERS, CLASS A, TYPE 1 12" (FOOT)	STORM SEWER REMOVAL, 12" (FOOT)	TRENCH BACKFILL (CU YD)
220+01	17.55' LT	637.94		219+96	15.5' LT	637.92	4.0	4.0	2.9
220+01	22.69' LT	638.00		220+01	17.55' LT	637.98	3.0	0.0	2.2
220+05	12.80' LT	UNKNOWN		220+01	17.55' LT	UNKNOWN	4.0	4.0	2.9
221+16	22.96' LT	638.55		220+01	17.55' LT	638.02	88.0	92.0	24.0
TOTALS:							99.0	100.0	32.0
ROUND TO:							100.0	100.0	35.0



BM 4616-3
CHISELED SQUARE ON TOP OF CURB BY P.O.T. #9, SOUTH OF GARAGE ON NORTH END OF REST AREA SITE.
STA. 121+03.77, 1.3' RT., ELEV = 644.42

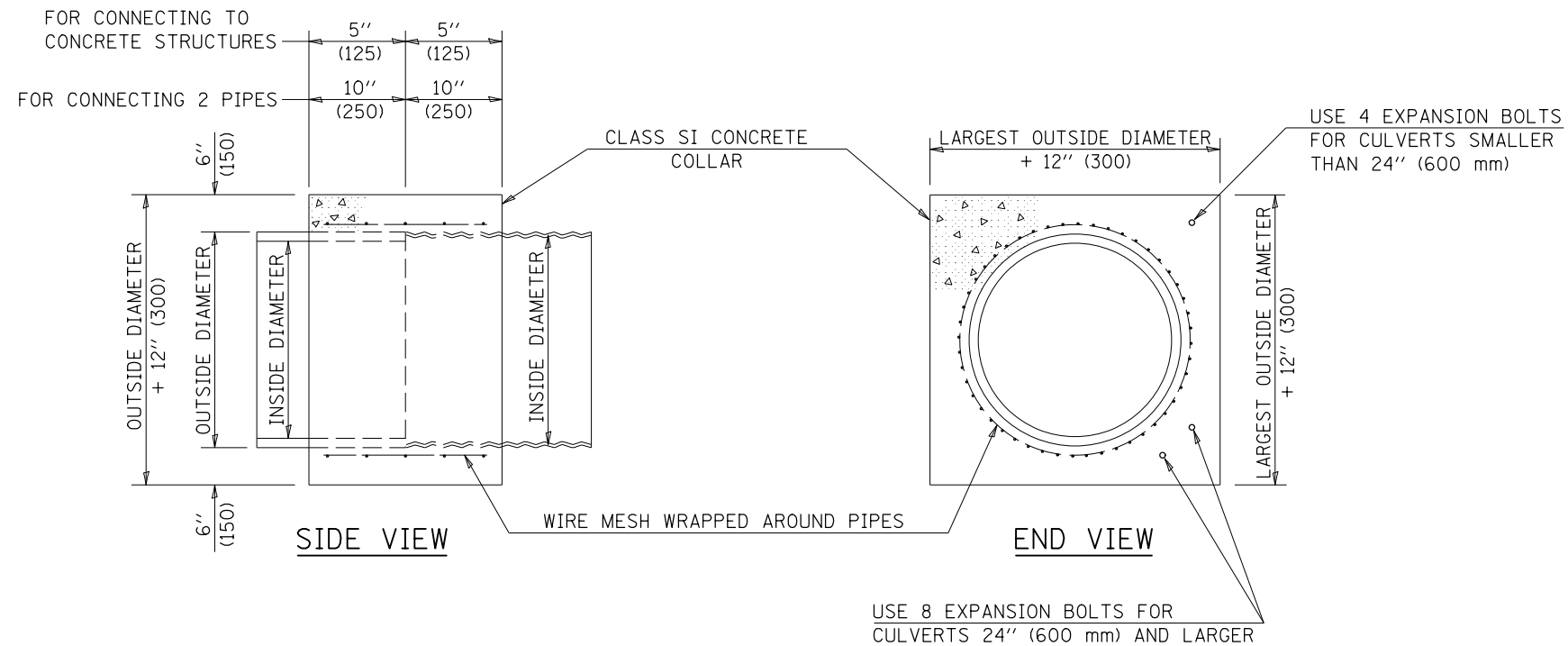
FILE NAME =	USER NAME = hoganbj	DESIGNED - BJH 2/9/2012	REVISED - BJH 4/9/2012
DRAWN -	CHECKED -	DATE -	REVISED -
PLOT SCALE = 40.0000' / in.			
PLOT DATE = 4/9/2012			

STATE OF ILLINOIS
DEPARTMENT OF TRANSPORTATION

PLAN SHEET

SCALE: _____ SHEET 2 OF 2 SHEETS STA. 216+00 TO STA. 222+43.64

F.A.I. RTE.	SECTION	COUNTY	TOTAL SHEETS	SHEET NO.
74	REST AREA REPAIR 2012-2	VERMILION	19	14
CONTRACT NO. 70969				ILLINOIS FED. AID PROJECT



GENERAL NOTES

1. CLASS SI CONCRETE SHALL BE USED THROUGHOUT.
2. WHEN CONCRETE COLLARS ARE USED TO CONNECT PIPES OF DIFFERENT OUTSIDE DIAMETERS, THE CONCRETE COLLAR SHALL BE FORMED USING THE LARGEST OUTSIDE DIAMETER (SEE END VIEW).
3. THE WIRE MESH SHALL WEIGH NOT LESS THAN 54#/100 SQ. FT. (2.63 kg/m²).
4. WHEN CONCRETE COLLARS ARE CONSTRUCTED ADJACENT TO AN EXISTING CONCRETE STRUCTURE (HEADWALLS, ETC.) EXPANSION BOLTS, SHALL BE USED AND WILL BE PAID FOR AT THE CONTRACT UNIT PRICE, EACH, FOR EXPANSION BOLTS OF THE SIZE SPECIFIED IN THE PLANS.
5. CONCRETE COLLARS WILL BE PAID FOR AT THE CONTRACT UNIT PRICE, PER CUBIC YARD (CUBIC METER), FOR CONCRETE COLLARS INCLUDING ALL MATERIAL AND LABOR SPECIFIED TO COMPLETE THE WORK IN PLACE.

QUANTITIES FOR CONCRETE PIPES	
INSIDE DIAMETER OF PIPE	ESTIMATED CLASS SI CONCRETE REQUIRED
INCH (mm)	20" (500 mm) WIDTH CU. YD. (m ³)
4" (100)	0.14 (0.11)
6" (150)	0.16 (0.12)
8" (200)	0.19 (0.14)
10" (250)	0.22 (0.17)
12" (300)	0.25 (0.19)
15" (375)	0.30 (0.23)
18" (450)	0.35 (0.27)
24" (600)	0.45 (0.35)
30" (750)	0.57 (0.43)
36" (900)	0.69 (0.53)
42" (1050)	0.83 (0.63)
48" (1200)	0.97 (0.74)
54" (1350)	1.12 (0.86)
60" (1500)	1.28 (0.98)

QUANTITIES FOR METAL PIPES	
INSIDE DIAMETER OF PIPE	ESTIMATED CLASS SI CONCRETE REQUIRED
INCH (mm)	20" (500 mm) WIDTH CU. YD. (m ³)
4" (100)	0.12 (0.09)
6" (150)	0.14 (0.11)
8" (200)	0.16 (0.12)
10" (250)	0.19 (0.14)
12" (300)	0.21 (0.16)
15" (375)	0.25 (0.19)
18" (450)	0.29 (0.22)
24" (600)	0.38 (0.29)
30" (750)	0.47 (0.36)
36" (900)	0.59 (0.45)
42" (1050)	0.69 (0.53)
48" (1200)	0.81 (0.62)
54" (1350)	0.93 (0.71)
60" (1500)	1.05 (0.81)

Note: All dimensions are in INCHES (millimeters) unless otherwise shown.

FILE NAME =	USER NAME = hogenbj	DESIGNED -	REVISED - 12/06
et:\pw\work\p\dot\hogenbj\d0294537\057069-sht-detail.dgn		DRAWN -	REVISED -
	PLOT SCALE = 48.0000' / in.	CHECKED -	REVISED -
	PLOT DATE = 3/5/2012	DATE -	REVISED -

STATE OF ILLINOIS
DEPARTMENT OF TRANSPORTATION

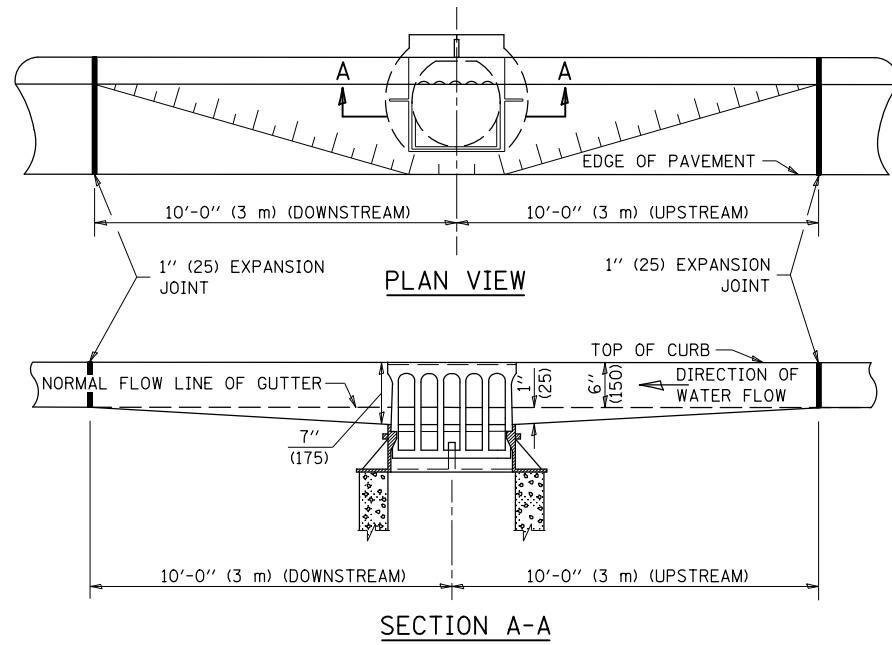
CONCRETE COLLAR

SCALE: _____ SHEET NO. ____ OF ____ SHEETS STA. _____ TO STA. _____

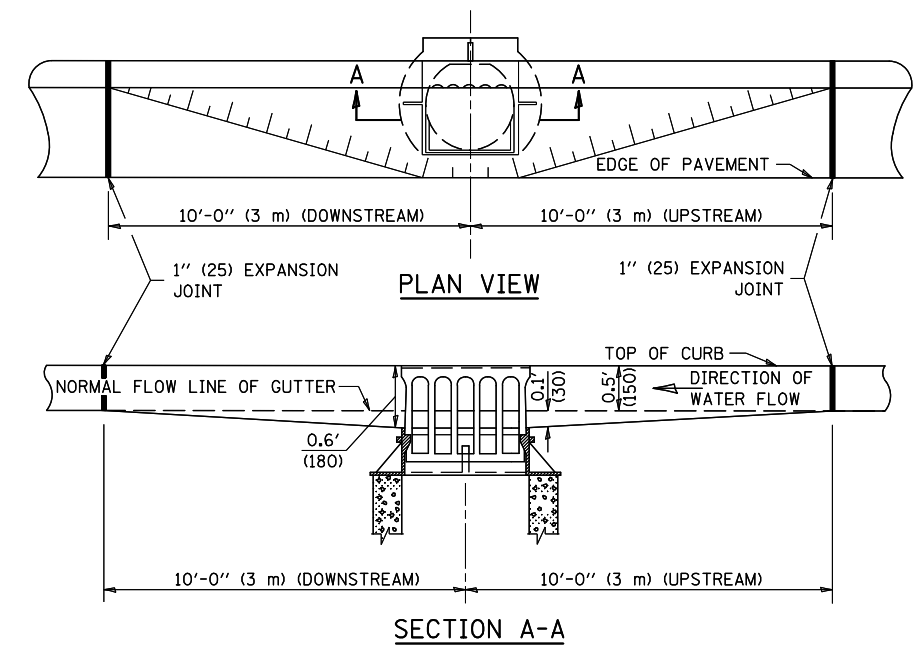
DISTRICT 5 DETAIL NO. 54248510

F.A.I. RTE.	SECTION	COUNTY	TOTAL SHEETS	SHEET NO.
74	REST AREA REPAIR 2012-2	VERMILION	19	15
				CONTRACT NO. 70969
FED. ROAD DIST. NO. - ILLINOIS FED. AID PROJECT				

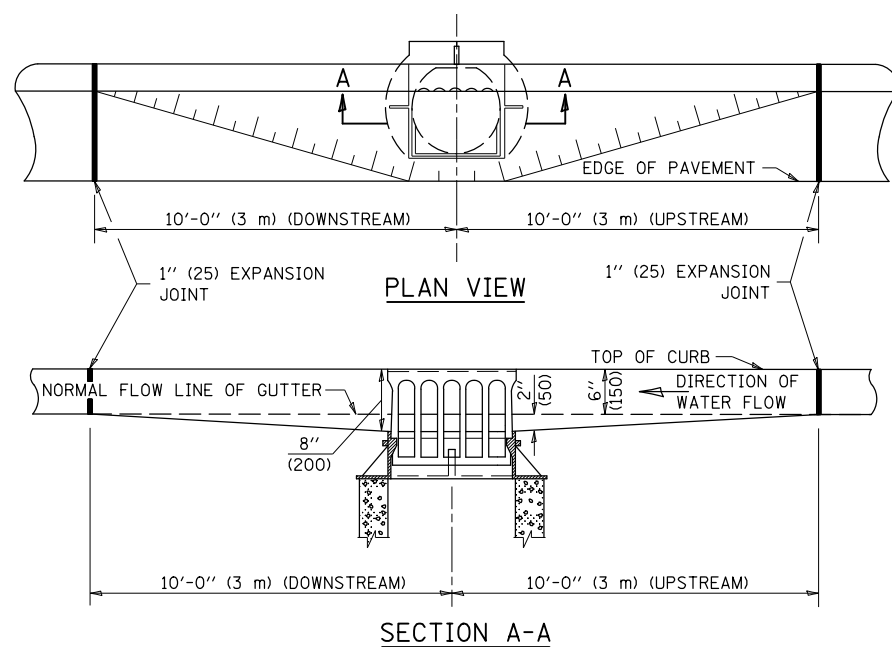
GUTTER DEPRESSION 1" (25mm)



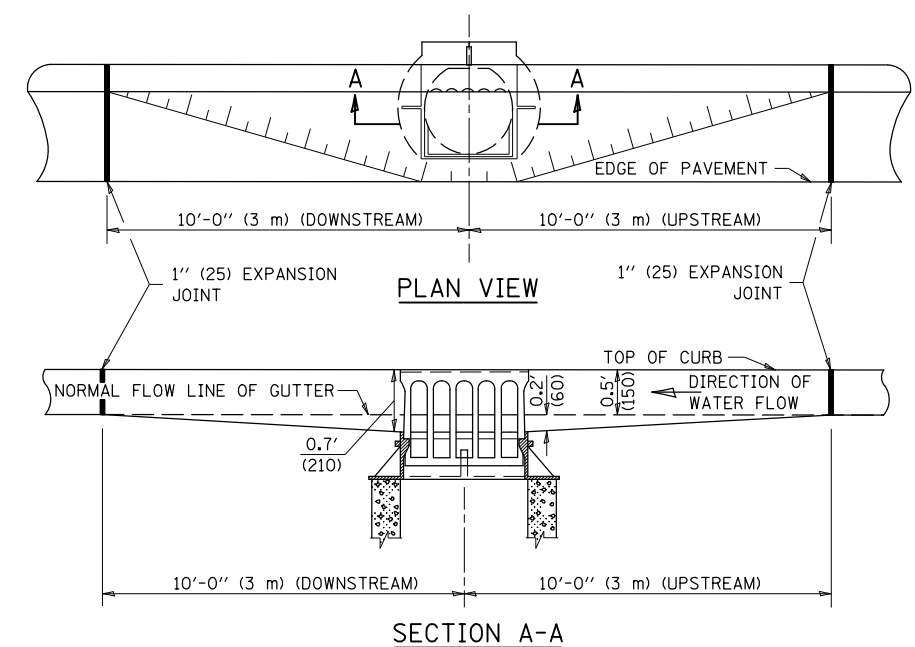
GUTTER DEPRESSION 0.1 FOOT (30mm)



GUTTER DEPRESSION 2" (50mm)



GUTTER DEPRESSION 0.2 FOOT (60mm)



GENERAL NOTES

1. THE TWO EXPANSION JOINTS SHALL BE PLACED AS SHOWN IN STANDARD 606001.
2. THE GUTTER GRADE SHALL BE DEPRESSED AT ALL INLETS, CATCH BASINS AND MANHOLES UNLESS OTHERWISE SPECIFIED IN THE PLANS.
3. THE COST OF THIS WORK SHALL BE INCLUDED IN THE COST OF THE VARIOUS PAY ITEMS OF WORK INVOLVED.

Note: All dimensions are in INCHES (millimeters) unless otherwise shown.

DISTRICT 5 DETAIL NO. 606AAAAA

FILE NAME =	USER NAME = hoganbj	DESIGNED -	REVISD - 11/06
et:\pw\work\p\id\hoganbj\d0294537\0570169-sht-detail.dgn		DRAWN -	REVISD -
	PLOT SCALE = 48.0000' / in.	CHECKED -	REVISD -
	PLOT DATE = 3/5/2012	DATE -	REVISD -

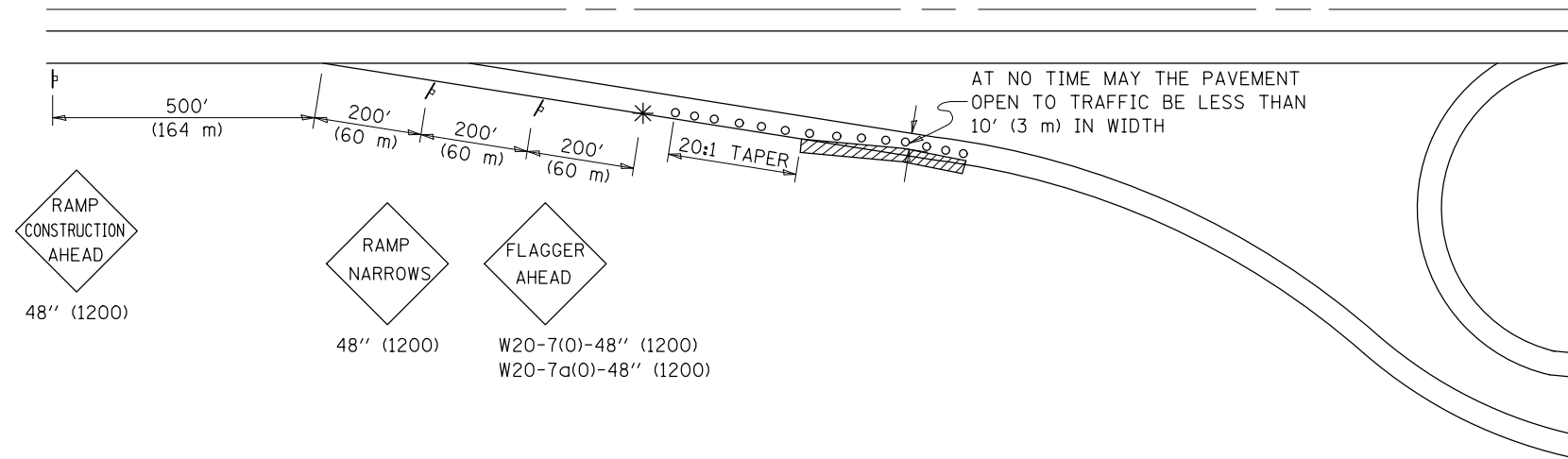
**STATE OF ILLINOIS
DEPARTMENT OF TRANSPORTATION**

GUTTER DEPRESSION AT INLETS, CATCH BASINS AND MANHOLES

SCALE: _____ SHEET NO. ____ OF ____ SHEETS STA. _____ TO STA. _____

F.A.I. RTE.	SECTION	COUNTY	TOTAL SHEETS	SHEET NO.
74	REST AREA REPAIR 2012-2	VERMILION	19	16
				CONTRACT NO. 70969
FED. ROAD DIST. NO. - ILLINOIS FED. AID PROJECT				

**APPLICATION NO. 1
DAY OPERATION ONLY
PARTIAL RAMP CLOSURE**



GENERAL NOTES

CONSTRUCTION OPERATIONS SHALL BE CONFINED TO AN AREA NARROW ENOUGH THAT A MINIMUM OF 10' (3 m) OF PAVEMENT SHALL BE OPEN TO TRAFFIC AT ALL TIMES.

FULL WIDTH PAVEMENT ON THE RAMPS SHALL BE OPEN TO TRAFFIC AT NIGHT.

WHEN NO WORK IS BEING PERFORMED, THE FLAGGER WILL NOT BE REQUIRED. IF THE FLAGGER IS NOT PRESENT, THE FLAGGER SIGNS SHALL BE REMOVED OR COVERED.

ALL SIGNS SHALL BE POST MOUNTED IF WORK IN THE AREA EXCEEDS FOUR DAYS OF DAYTIME OPERATIONS.

LONGITUDINAL DIMENSIONS MAY BE ADJUSTED SLIGHTLY TO FIT FIELD CONDITIONS.

ALL VEHICLES, EQUIPMENT, WORKERS (EXCEPT FLAGGER) AND THEIR ACTIVITIES ARE RESTRICTED AT ALL TIMES TO ONE SIDE OF THE PAVEMENT UNLESS OTHERWISE AUTHORIZED BY THE DISTRICT ENGINEER.

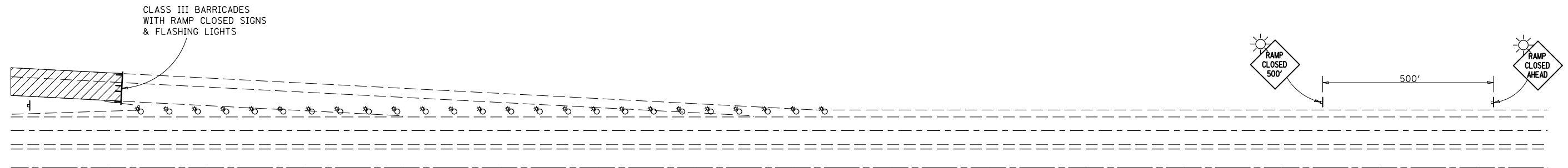
SYMBOLS

- (APPLICATION NO. 1) TYPE I OR II BARRICADES OR DRUMS @ 50' (15 m) CTS.
- ⊗ (APPLICATION NO. 2) TYPE I OR II BARRICADES OR DRUMS @ 25' (7.5 m) CTS. W/STEADY BURNING LIGHTS
- * (APPLICATION NO. 1) FLAGGER PLACED AS DIRECTED BY THE ENGINEER
- ‡ SIGN ON PORTABLE OR PERMANENT SUPPORT
- ▨ WORK AREA

TYPICAL APPLICATIONS

- PAVEMENT PATCHING
- PIPE UNDERDRAINS
- HMA RESURFACING

**APPLICATION NO. 2
RAMP CLOSURE**



GENERAL NOTES

STEADY BURN LIGHTS ARE NOT REQUIRED FOR DAYTIME OPERATIONS.

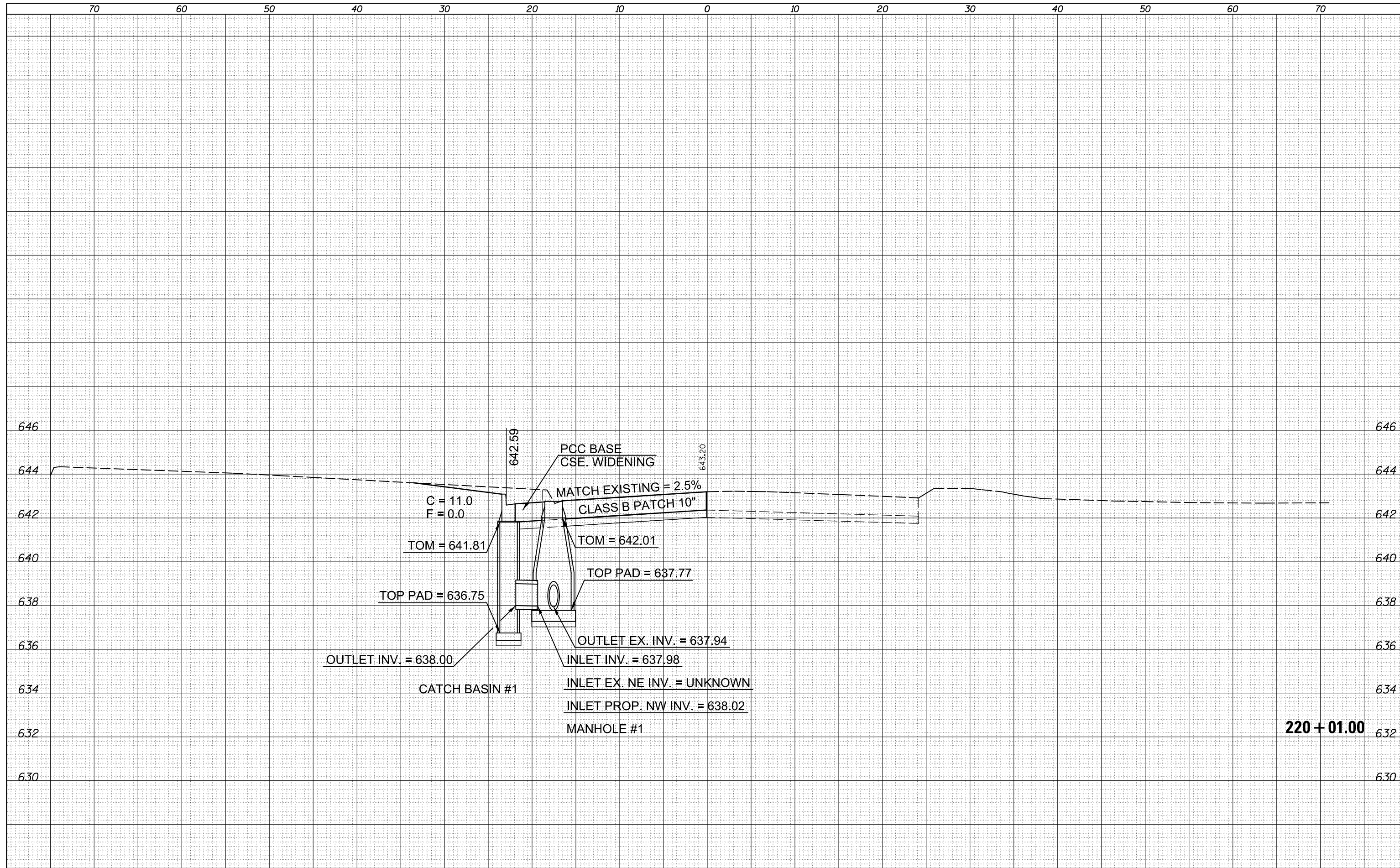
CONTACT THE DISTRICT TRAFFIC OPERATIONS ENGINEER AT 217-465-4181, ONE WEEK PRIOR TO CLOSING THE RAMP.

Note: All dimensions are in INCHES (millimeters) unless otherwise shown.

FILE NAME =	USER NAME = hogenbj	DESIGNED -	REVISED - 11/06	STATE OF ILLINOIS DEPARTMENT OF TRANSPORTATION	TRAFFIC CONTROL AND PROTECTION, (SPECIAL)	F.A.I. RTE.	SECTION	COUNTY	TOTAL SHEETS	SHEET NO.
et:\pwork\pwork\hogenbj\d0294537\0570169-sht-detail.dgn	DRAWN -	REVISED - BJH 3/5/2012	74			REST AREA REPAIR 2012-2	VERMILION	19	17	
PLOT SCALE = 48.0000' / in.	CHECKED -	REVISED -	CONTRACT NO. 70969							
PLOT DATE = 3/5/2012	DATE -	REVISED -	FED. ROAD DIST. NO. - ILLINOIS FED. AID PROJECT							

DATE	
BY	
SURVEYED	
PLOTTED	
TEMPLATE	
AREAS	
CHECKED	
FINAL SURVEY	
NOTE BOOK	
NO.	

DATE	
BY	
SURVEYED	
PLOTTED	
TEMPLATE	
AREAS	
CHECKED	
ORIGINAL SURVEY	
NOTE BOOK	
NO.	



FILE NAME =	USER NAME = hoganbj	DESIGNED -	REVISED -
es:\pw_work\pwidot\hoganbj\d0294537\0570969-sh	XS-Cor_1ot.dgn	DRAWN -	REVISED -
		CHECKED -	REVISED -
		DATE -	REVISED -

**STATE OF ILLINOIS
DEPARTMENT OF TRANSPORTATION**

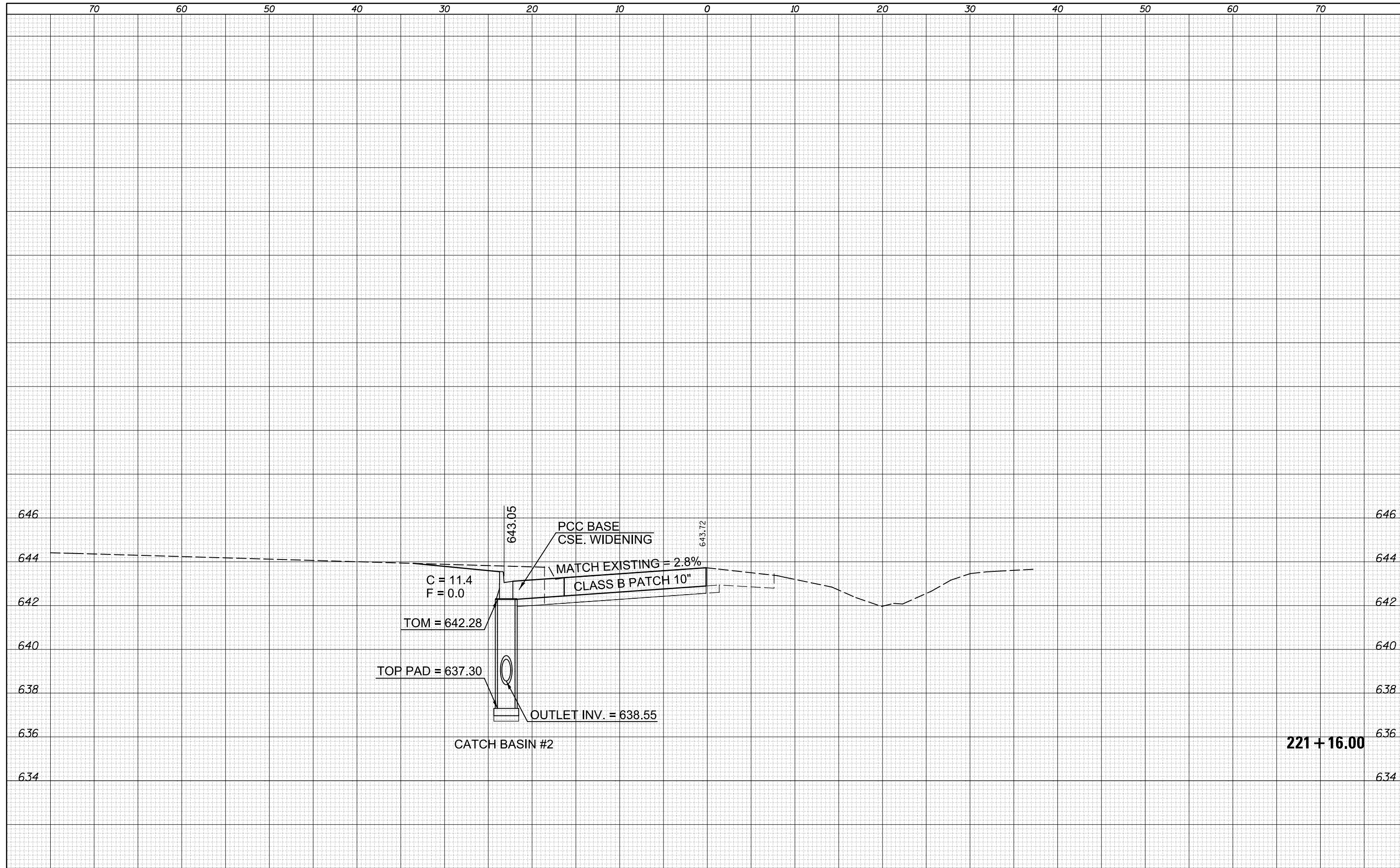
CROSS SECTIONS			
SCALE:	SHEET	OF	SHEETS
		STA.	TO STA.

F.A.I. RTE.	SECTION	COUNTY	TOTAL SHEETS	SHEET NO.
74	REST AREA REPAIR 2012-2	VERMILION	19	18
			CONTRACT NO. 70969	
ILLINOIS FED. AID PROJECT				

220 + 01.00

DATE	
BY	
FINAL SURVEY	SURVEYED
NOTE BOOK	PLOTTED
NO.	TEMPLATE
	AREAS CHECKED
	AREAS CHECKED

DATE	
BY	
ORIGINAL SURVEY	SURVEYED
NOTE BOOK	PLOTTED
NO.	TEMPLATE
	AREAS CHECKED
	AREAS CHECKED



FILE NAME =	USER NAME = hoganbj	DESIGNED -	REVISED -
es:\pw_work\pwidot\hoganbj\d0294537\0570969-sh	t-XS-Car_lot.dgn	DRAWN -	REVISED -
	PLOT SCALE = 10.0000' / in.	CHECKED -	REVISED -
	PLOT DATE = 3/5/2012	DATE -	REVISED -

**STATE OF ILLINOIS
DEPARTMENT OF TRANSPORTATION**

CROSS SECTIONS			
SCALE:	SHEET	OF	SHEETS
	STA.		TO STA.

F.A.I. RTE.	SECTION	COUNTY	TOTAL SHEETS	SHEET NO.
74	REST AREA REPAIR 2012-2	VERMILION	19	19
			CONTRACT NO. 70969	
ILLINOIS FED. AID PROJECT				

221 + 16.00