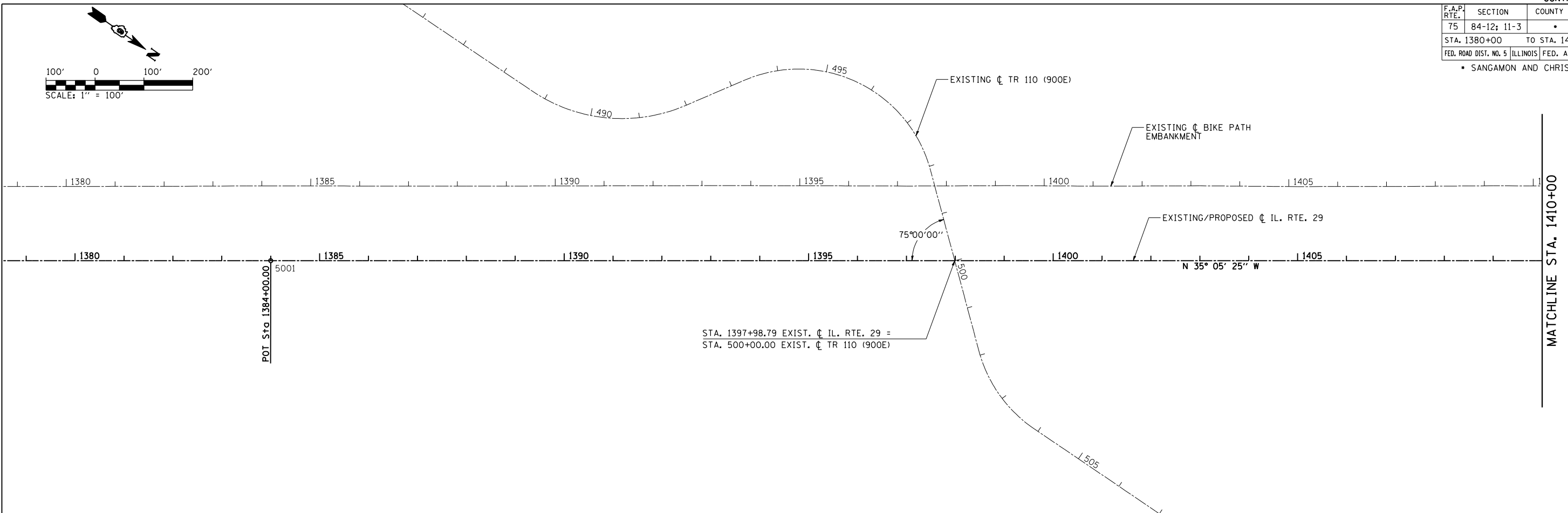
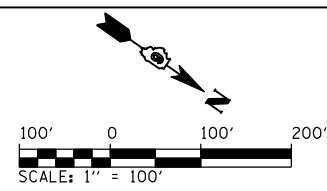
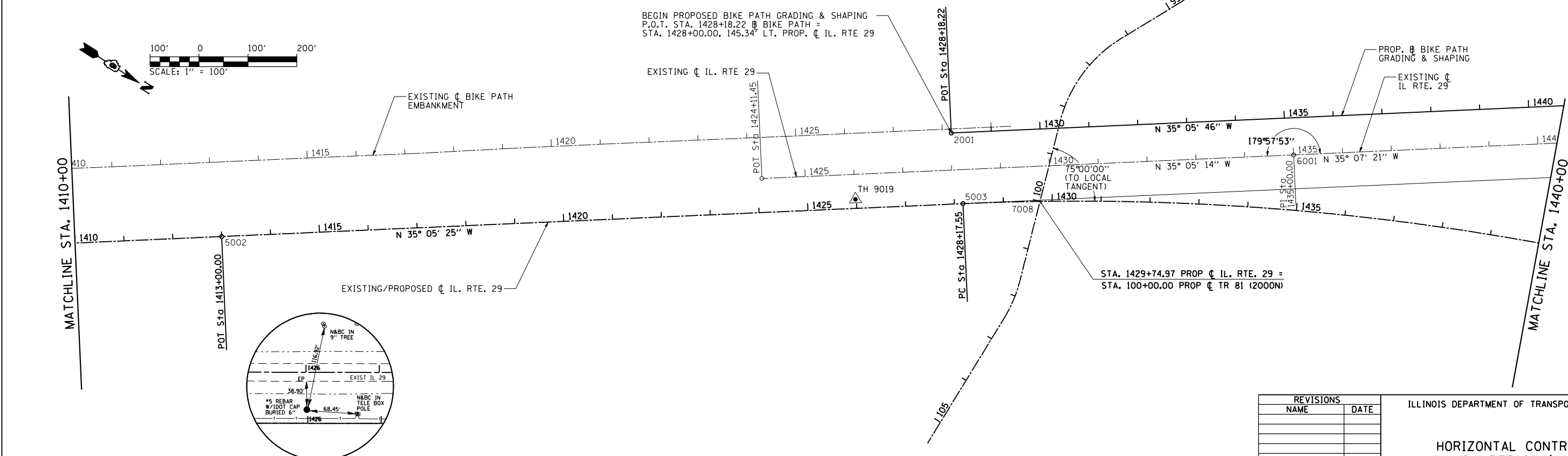
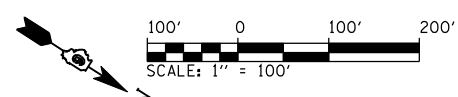


F.A.P. RTE.	SECTION	COUNTY	TOTAL SHEETS	SHEET NO.
75	84-12; 11-3	•	729	63
STA. 1380+00		TO STA. 1440+00		
FED. ROAD DIST. NO. 5 ILLINOIS FED. AID PROJECT				
• SANGAMON AND CHRISTIAN				



STA. 1397+98.79 EXIST. ϕ IL. RTE. 29 =
 STA. 500+00.00 EXIST. ϕ TR 110 (900E)

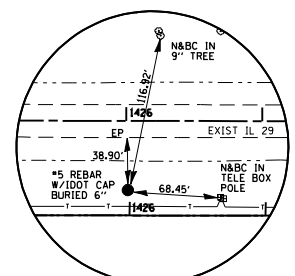
MATCHLINE STA. 1410+00



BEGIN PROPOSED BIKE PATH GRADING & SHAPING
 P.O.T. STA. 1428+18.22 ϕ BIKE PATH =
 STA. 1428+00.00, 145.34° LT. PROP. ϕ IL. RTE 29

STA. 1429+74.97 PROP ϕ IL. RTE. 29 =
 STA. 100+00.00 PROP ϕ TR 81 (2000N)

MATCHLINE STA. 1440+00



DOT HORIZONTAL CONTROL - TH 9019
 STATION 1425+98.26, 18.54' LT.
 N: 1083497.730
 E: 2519724.384

REVISIONS	
NAME	DATE

ILLINOIS DEPARTMENT OF TRANSPORTATION

**HORIZONTAL CONTROL
 IL. RTE 29 ϕ**

SCALE: 1" = 100'
 DATE: 03/06/2012

DRAWN BY: R.A.H.
 CHECKED BY: J.M.M.

Default L:\DOT\030600\Draw\Sheets\030600\Draw\72829-sht-ATB-ALC-001.dgn 3/6/2012