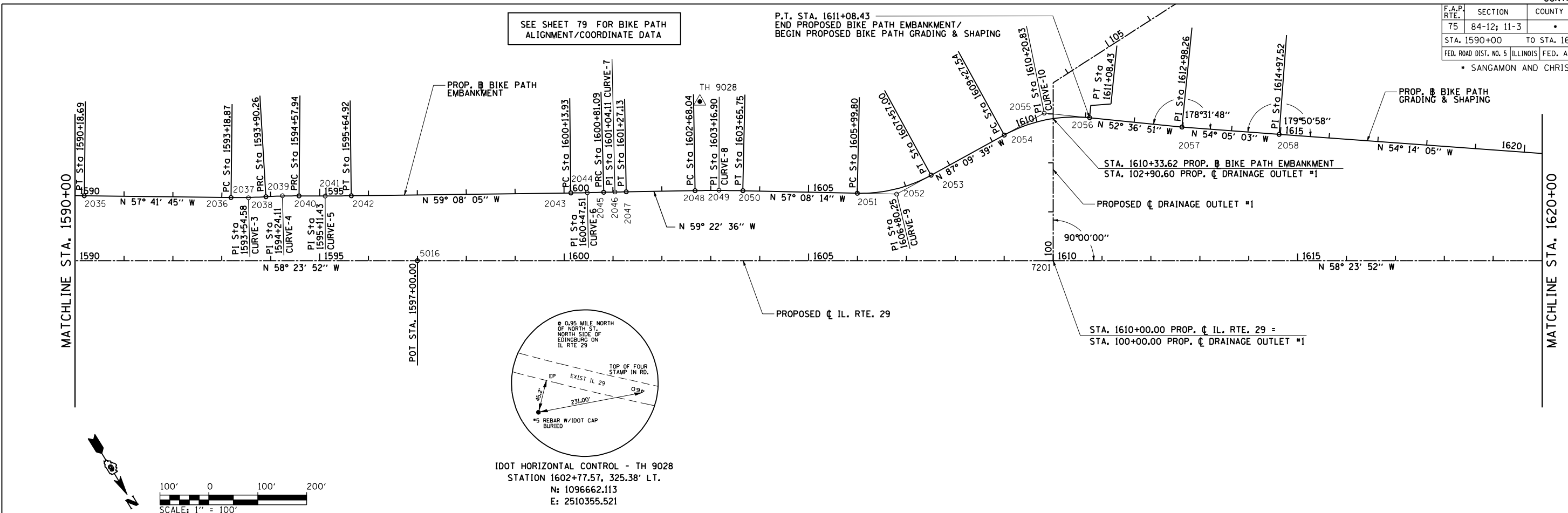


F.A.P. RTE.	SECTION	COUNTY	TOTAL SHEETS	SHEET NO.
75	84-12; 11-3		729	67
STA. 1590+00		TO STA. 1650+00		
FED. ROAD DIST. NO. 5 ILLINOIS FED. AID PROJECT				
• SANGAMON AND CHRISTIAN				

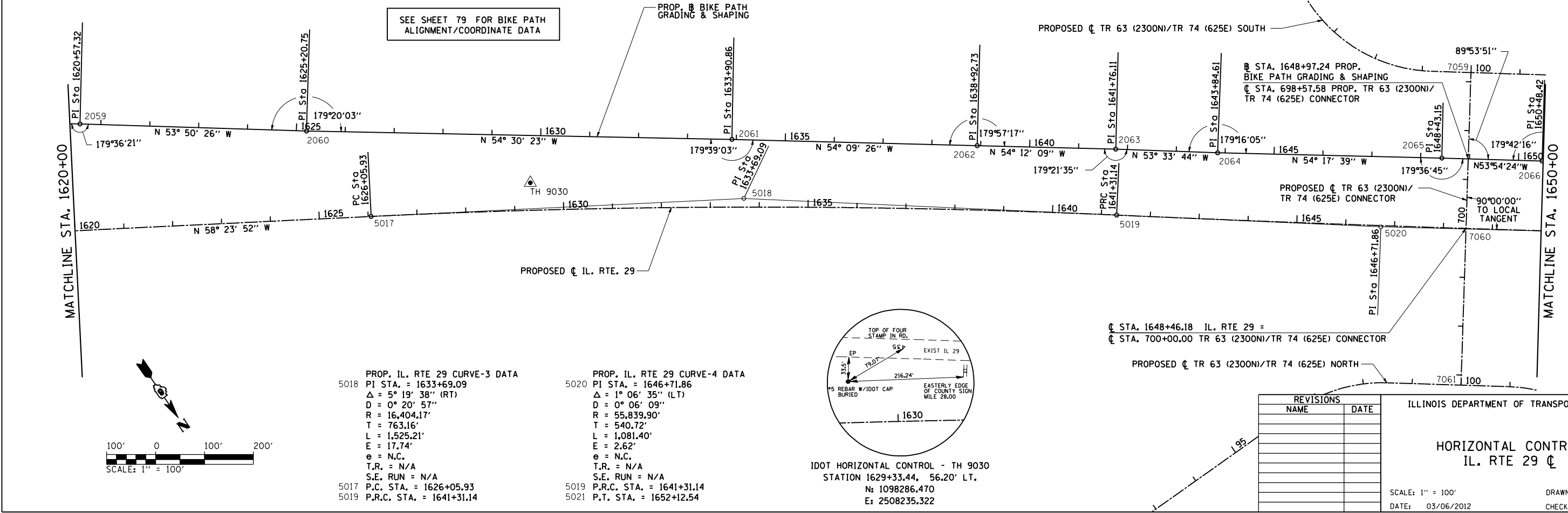
SEE SHEET 79 FOR BIKE PATH ALIGNMENT/COORDINATE DATA

P.T. STA. 1611+08.43
END PROPOSED BIKE PATH EMBANKMENT/
BEGIN PROPOSED BIKE PATH GRADING & SHAPING



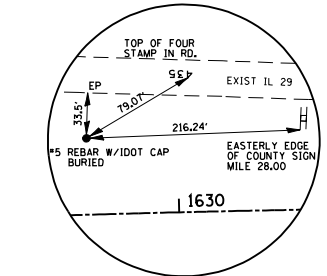
SEE SHEET 79 FOR BIKE PATH ALIGNMENT/COORDINATE DATA

PROP. BIKE PATH GRADING & SHAPING



PROP. IL. RTE 29 CURVE-3 DATA
5018 PI STA. = 1633+69.09
Δ = 5° 19' 38" (RT)
D = 0° 20' 57"
R = 16,404.17'
T = 763.16'
L = 1,525.21'
E = 17.74'
e = N.C.
T.R. = N/A
S.E. RUN = N/A
5017 P.C. STA. = 1626+05.93
5019 P.R.C. STA. = 1641+31.14

PROP. IL. RTE 29 CURVE-4 DATA
5020 PI STA. = 1646+71.86
Δ = 1° 06' 35" (LT)
D = 0° 06' 09"
R = 55,839.90'
T = 540.72'
L = 1,081.40'
E = 2.62'
e = N.C.
T.R. = N/A
S.E. RUN = N/A
5019 P.R.C. STA. = 1641+31.14
5021 P.T. STA. = 1652+12.54



REVISIONS	
NAME	DATE

ILLINOIS DEPARTMENT OF TRANSPORTATION
HORIZONTAL CONTROL
IL. RTE 29 CL
SCALE: 1" = 100'
DATE: 03/06/2012
DRAWN BY: R.A.H.
CHECKED BY: J.M.M.