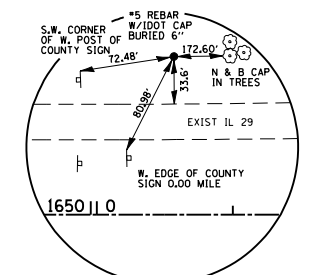
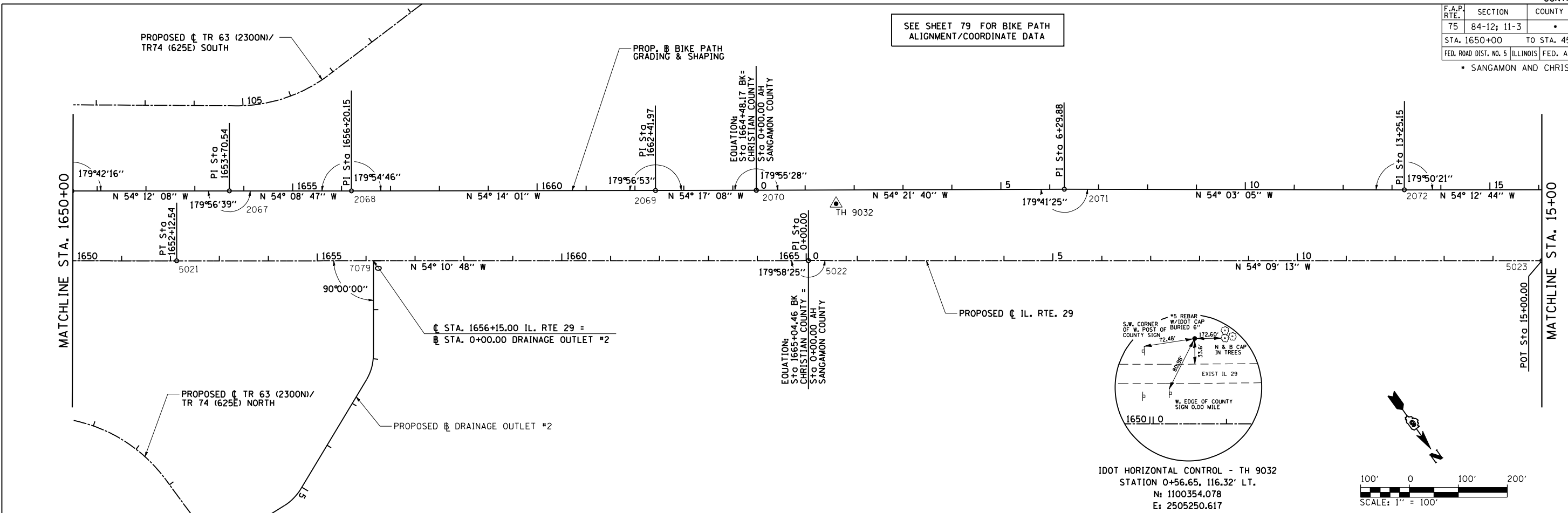
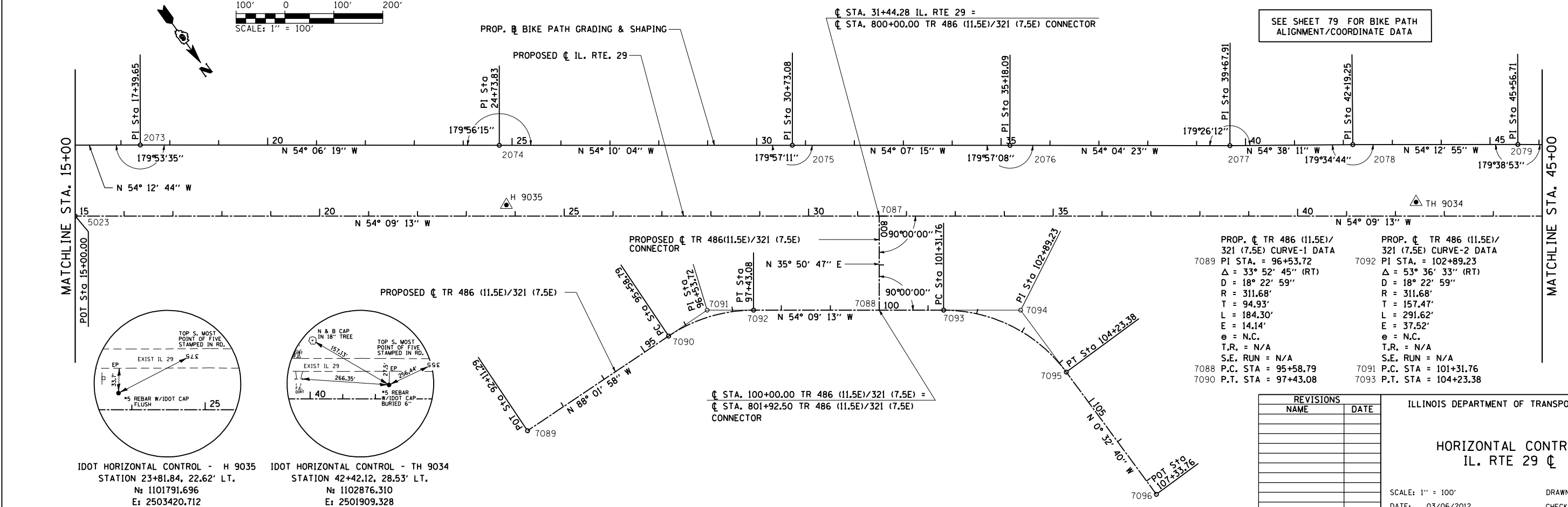
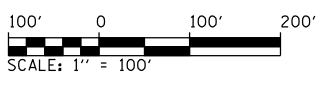


F.A.P. RTE.	SECTION	COUNTY	TOTAL SHEETS	SHEET NO.
75	84-12; 11-3	•	729	68
STA. 1650+00		TO STA. 45+00		
FED. ROAD DIST. NO. 5 ILLINOIS FED. AID PROJECT				
• SANGAMON AND CHRISTIAN				

SEE SHEET 79 FOR BIKE PATH ALIGNMENT/COORDINATE DATA



IDOT HORIZONTAL CONTROL - TH 9032
STATION 0+56.65, 116.32' LT.
N: 1100354.078
E: 2505250.617



SEE SHEET 79 FOR BIKE PATH ALIGNMENT/COORDINATE DATA

<p>PROP. CL TR 486 (11.5E)/321 (7.5E) CURVE-1 DATA</p> <p>7089 PI STA. = 96+53.72 Δ = 33° 52' 45" (RT) D = 18° 22' 59" R = 311.68' T = 94.93' L = 184.30' E = 14.14' e = N.C. T.R. = N/A S.E. RUN = N/A</p> <p>7088 P.C. STA = 95+58.79 7090 P.T. STA = 97+43.08</p>	<p>PROP. CL TR 486 (11.5E)/321 (7.5E) CURVE-2 DATA</p> <p>7092 PI STA. = 102+89.23 Δ = 53° 36' 33" (RT) D = 18° 22' 59" R = 311.68' T = 157.47' L = 291.62' E = 37.52' e = N.C. T.R. = N/A S.E. RUN = N/A</p> <p>7091 P.C. STA = 101+31.76 7093 P.T. STA = 104+23.38</p>
--	--

IDOT HORIZONTAL CONTROL - H 9035
STATION 23+81.84, 22.62' LT.
N: 1101791.696
E: 2503420.712

IDOT HORIZONTAL CONTROL - TH 9034
STATION 42+42.12, 28.53' LT.
N: 1102876.310
E: 2501909.328

REVISIONS	
NAME	DATE

ILLINOIS DEPARTMENT OF TRANSPORTATION

HORIZONTAL CONTROL
IL. RTE. 29 CL

SCALE: 1" = 100'
DATE: 03/06/2012

DRAWN BY: R.A.H.
CHECKED BY: J.M.M.

Default L:\DOT\0306601\Draw\Sheets\1672829-sht-ATB-ALC-006.dgn 3/6/2012