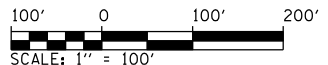
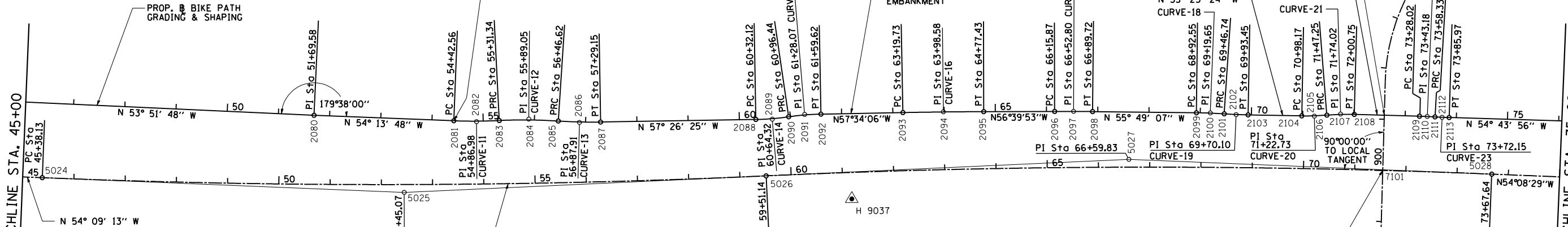


| F.A.P. RTE. | SECTION | COUNTY | TOTAL SHEETS | SHEET NO. |
|-------------|-------------|--------|--------------|-----------|
| 75 | 84-12; 11-3 | • | 729 | 69 |

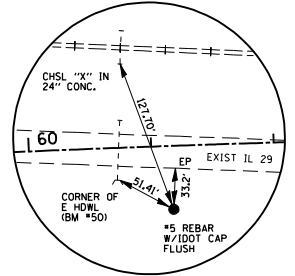
STA. 45+00 TO STA. 105+00
ILLINOIS FED. AID PROJECT
SANGAMON AND CHRISTIAN



SEE SHEET 80 FOR BIKE PATH ALIGNMENT/COORDINATE DATA



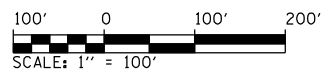
PROP. IL. RTE 29 CURVE-5 DATA
 5025 PI STA. = 52+45.07
 Δ = 4° 56' 07" (LT)
 D = 0° 20' 57"
 R = 16,404.17'
 T = 706.94'
 L = 1,413.01'
 E = 15.23'
 e = N.C.
 T.R. = N/A
 S.E. RUN = N/A
 5024 P.C. STA. = 45+38.13
 5026 P.R.C. STA. = 59+51.14



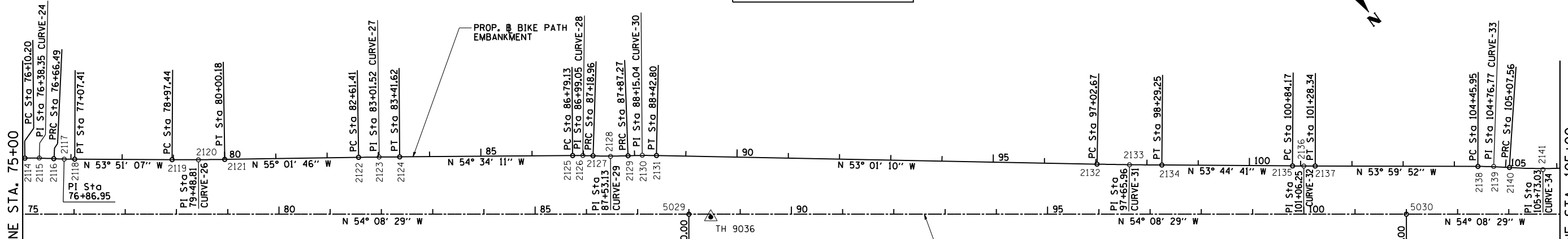
IDOT HORIZONTAL CONTROL - H 9037
 STATION 61+16.64, 51.78' RT.
 N: 1103979.832
 E: 2500392.007

PROP. IL. RTE 29 CURVE-6 DATA
 5027 PI STA. = 66+59.83
 Δ = 4° 56' 51" (RT)
 D = 0° 20' 57"
 R = 16,404.16'
 T = 708.69'
 L = 1,416.50'
 E = 15.30'
 e = N.C.
 T.R. = N/A
 S.E. RUN = N/A
 5026 P.R.C. STA. = 59+51.14
 5028 P.T. STA. = 73+67.64

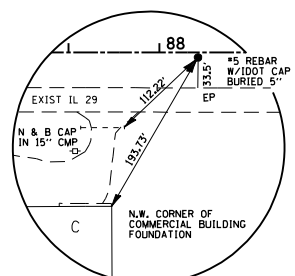
STA. 71+54.74 PROP. CL. RTE 29
 STA. 900+00.00 PROP. CL. TR 299 (7S) AH. =
 STA. 900+00.00 PROP. CL. ELM ST. BK.
 STA. 903+76.20 PROP. CL. TR 299 (7S) =
 STA. 100+00.00 PROP. CL. TR 299 N. FRONTAGE ROAD



SEE SHEET 81 FOR BIKE PATH ALIGNMENT/COORDINATE DATA



PROP. IL. RTE 29 CURVE-24 DATA
 2118 PI STA. = 76+86.95
 Δ = 4° 56' 07" (LT)
 D = 0° 20' 57"
 R = 16,404.17'
 T = 706.94'
 L = 1,413.01'
 E = 15.23'
 e = N.C.
 T.R. = N/A
 S.E. RUN = N/A
 2114 P.C. STA. = 76+10.20
 2116 P.R.C. STA. = 76+66.49



IDOT HORIZONTAL CONTROL - TH 9036
 STATION 88+42.69, 5.62' RT.
 N: 1105497.768
 E: 2498131.943

| REVISIONS | |
|-----------|------|
| NAME | DATE |
| | |
| | |
| | |
| | |
| | |
| | |
| | |
| | |
| | |
| | |

ILLINOIS DEPARTMENT OF TRANSPORTATION
 HORIZONTAL CONTROL
 IL. RTE 29 CL
 SCALE: 1" = 100'
 DATE: 03/06/2012
 DRAWN BY: R.A.H.
 CHECKED BY: J.M.M.