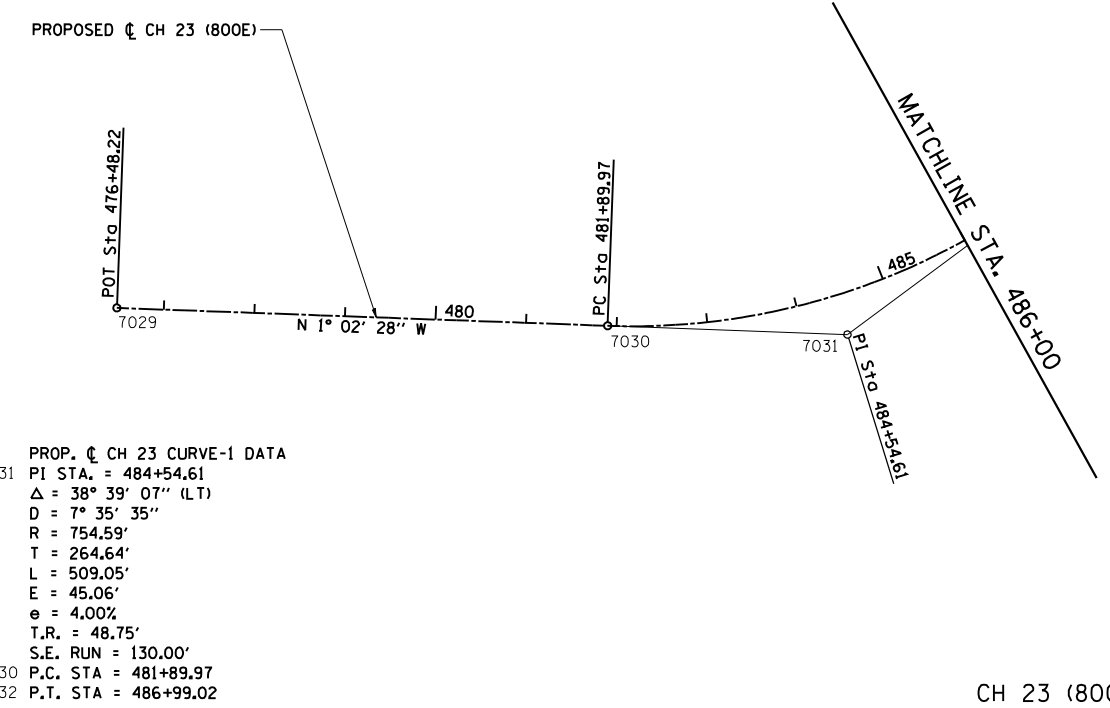
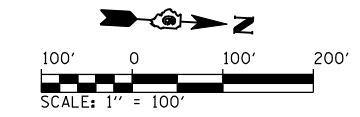
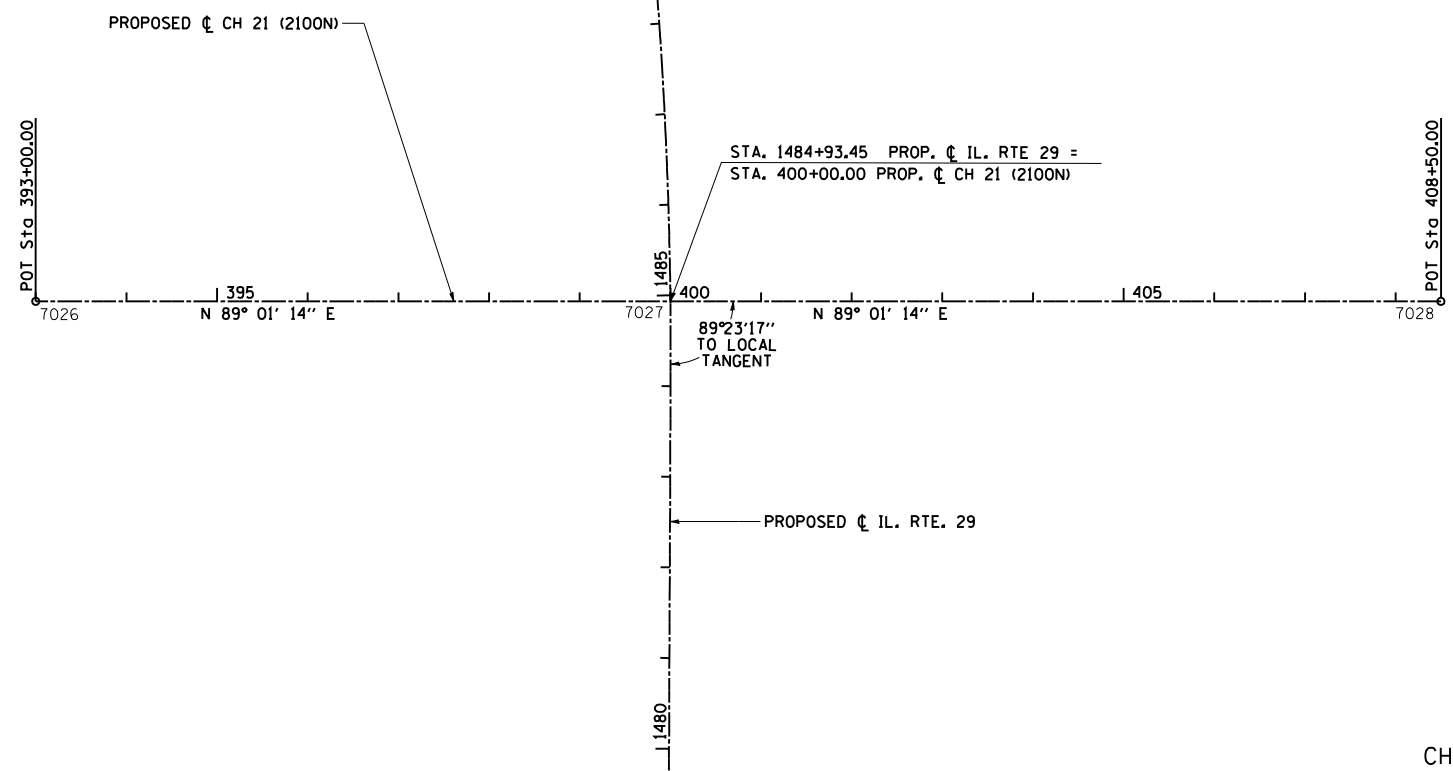
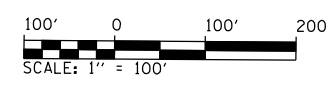


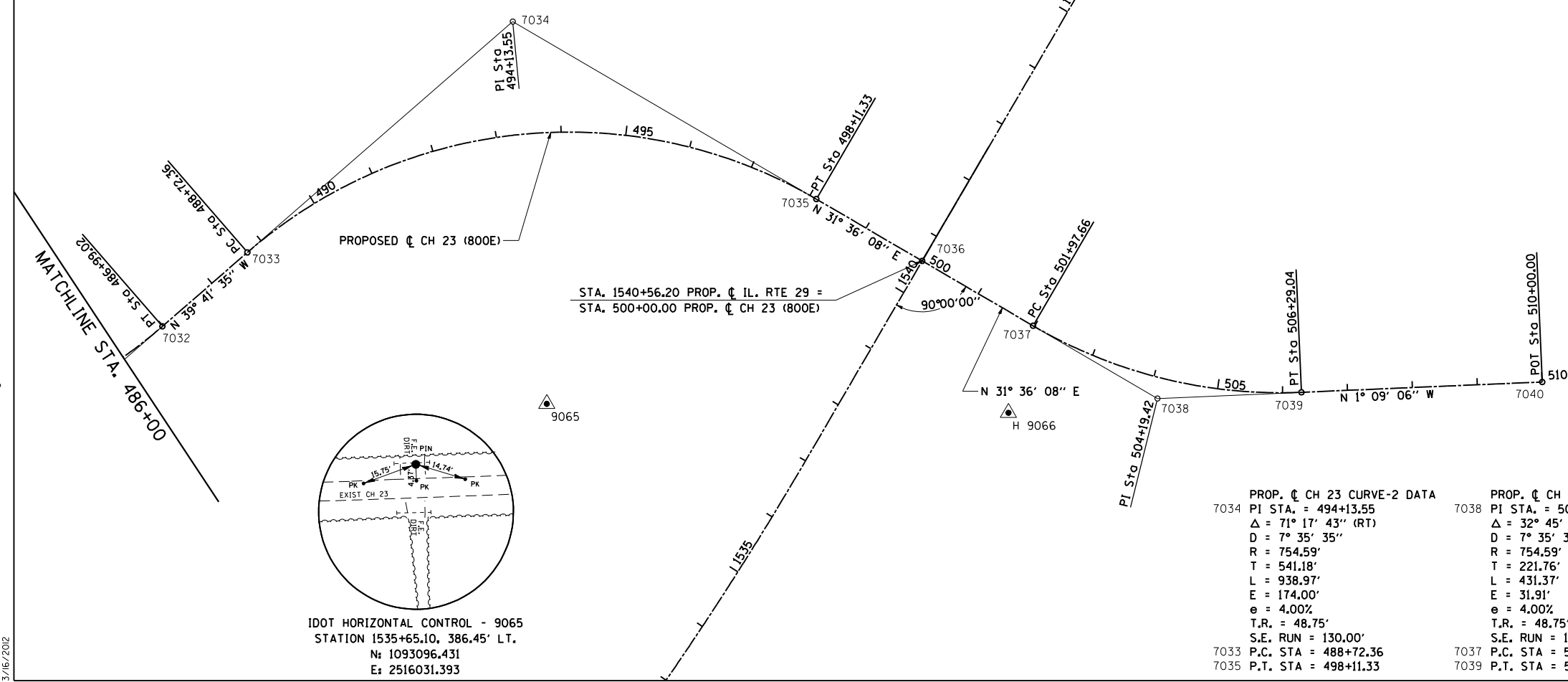
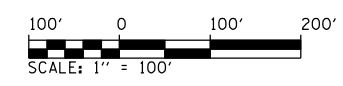
F.A.P. RTE.	SECTION	COUNTY	TOTAL SHEETS	SHEET NO.
75	84-12; 11-3		729	73
STA. N/A		TO STA. N/A		
FED. ROAD DIST. NO. 5 ILLINOIS FED. AID PROJECT				
• SANGAMON AND CHRISTIAN				



PROP. CH 23 CURVE-1 DATA  
 7031 PI STA. = 484+54.61  
 Δ = 38° 39' 07" (LT)  
 D = 7° 35' 35"  
 R = 754.59'  
 T = 264.64'  
 L = 509.05'  
 E = 45.06'  
 e = 4.00%  
 T.R. = 48.75'  
 S.E. RUN = 130.00'  
 7030 P.C. STA = 481+89.97  
 7032 P.T. STA = 486+99.02

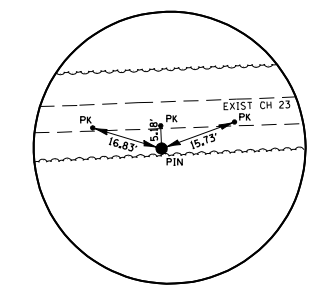
CH 21 (2100N)

CH 23 (800E)



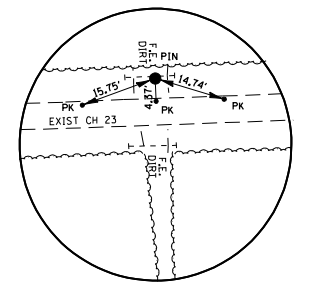
PROP. CH 23 CURVE-2 DATA  
 7034 PI STA. = 494+13.55  
 Δ = 71° 17' 43" (RT)  
 D = 7° 35' 35"  
 R = 754.59'  
 T = 541.18'  
 L = 938.97'  
 E = 174.00'  
 e = 4.00%  
 T.R. = 48.75'  
 S.E. RUN = 130.00'  
 7033 P.C. STA = 488+72.36  
 7035 P.T. STA = 498+11.33

PROP. CH 23 CURVE-3 DATA  
 7038 PI STA. = 504+19.42  
 Δ = 32° 45' 14" (LT)  
 D = 7° 35' 35"  
 R = 754.59'  
 T = 221.76'  
 L = 431.37'  
 E = 31.91'  
 e = 4.00%  
 T.R. = 48.75'  
 S.E. RUN = 130.00'  
 7037 P.C. STA = 501+97.66  
 7039 P.T. STA = 506+29.04



IDOT HORIZONTAL CONTROL - 9066  
 STATION 1539+21.46, 232.54' RT.  
 N: 1093096.431  
 E: 2516031.393

CH 23 (800E)



IDOT HORIZONTAL CONTROL - 9065  
 STATION 1535+65.10, 386.45' LT.  
 N: 1093096.431  
 E: 2516031.393

REVISIONS	
NAME	DATE

ILLINOIS DEPARTMENT OF TRANSPORTATION  
**HORIZONTAL CONTROL**  
 CH 21 (2100N) & CH 23 (800E)  
 SCALE: 1" = 100'  
 DATE: 03/06/2012  
 DRAWN BY: R.A.H.  
 CHECKED BY: J.M.M.

Default L:\DOT\0306601\Draw\Sheets\0306601\Draw\72829-sht-ATB-ALC-01.dgn 3/6/2012