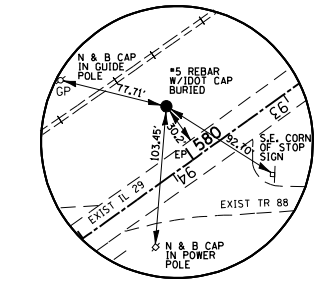
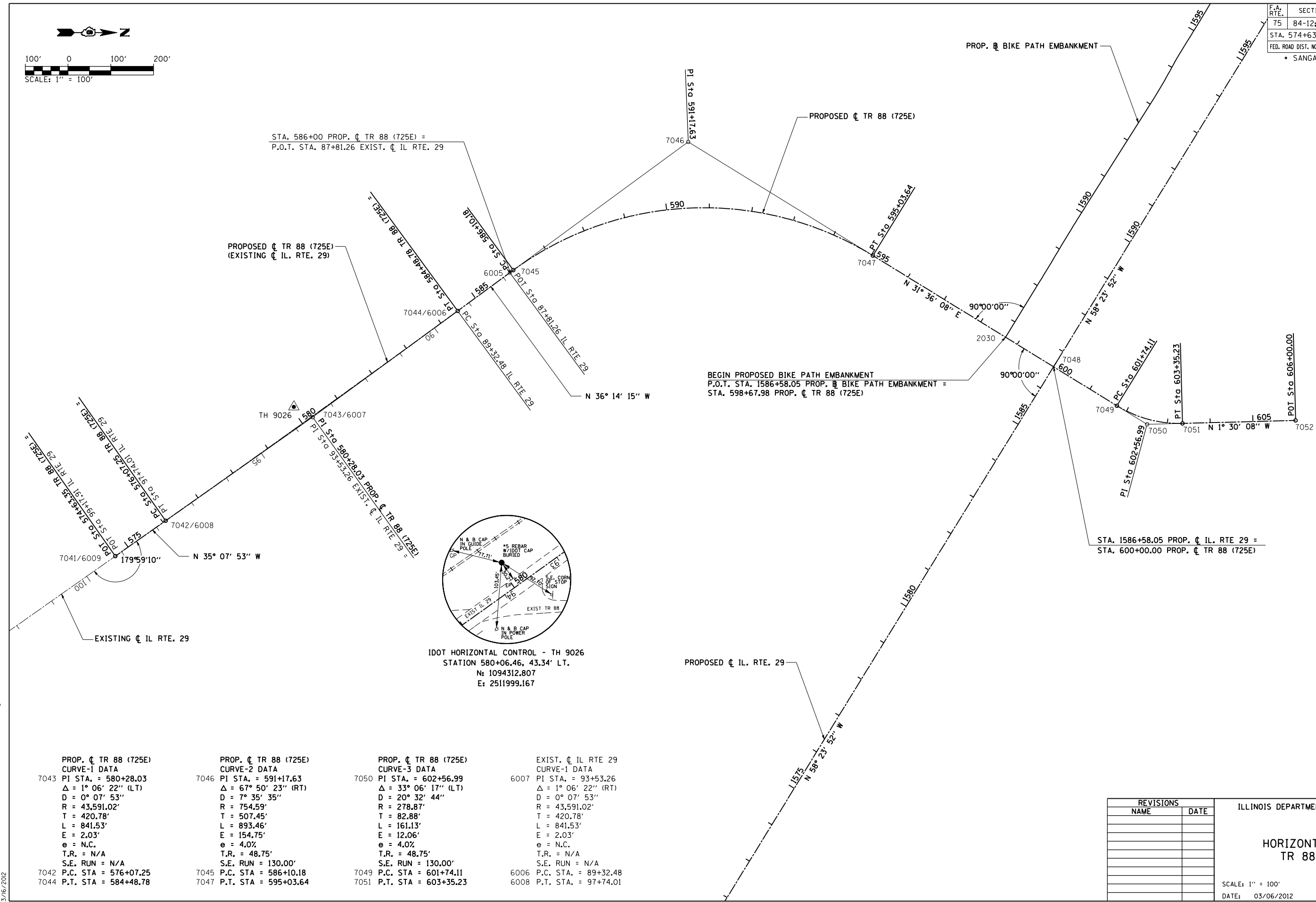
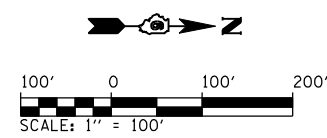


F.A. RTE.	SECTION	COUNTY	TOTAL SHEETS	SHEET NO.
75	84-12; 11-3	•	729	74
STA. 574+63.35 TO STA. 606+00				
FED. ROAD DIST. NO. 5 ILLINOIS FED. AID PROJECT				
• SANGAMON AND CHRISTIAN				



IDOT HORIZONTAL CONTROL - TH 9026  
 STATION 580+06.46, 43.34' LT.  
 N: 1094312.807  
 E: 2511999.167

PROP. CL TR 88 (725E) CURVE-1 DATA	PROP. CL TR 88 (725E) CURVE-2 DATA	PROP. CL TR 88 (725E) CURVE-3 DATA	EXIST. CL IL RTE 29 CURVE-1 DATA
7043 PI STA. = 580+28.03 Δ = 1° 06' 22" (LT) D = 0° 07' 53" R = 43,591.02' T = 420.78' L = 841.53' E = 2.03' e = N.C. T.R. = N/A S.E. RUN = N/A	7046 PI STA. = 591+17.63 Δ = 67° 50' 23" (RT) D = 7° 35' 35" R = 754.59' T = 507.45' L = 893.46' E = 154.75' e = 4.0% T.R. = 48.75' S.E. RUN = 130.00'	7050 PI STA. = 602+56.99 Δ = 33° 06' 17" (LT) D = 20° 32' 44" R = 278.87' T = 82.88' L = 161.13' E = 12.06' e = 4.0% T.R. = 48.75' S.E. RUN = 130.00'	6007 PI STA. = 93+53.26 Δ = 1° 06' 22" (RT) D = 0° 07' 53" R = 43,591.02' T = 420.78' L = 841.53' E = 2.03' e = N.C. T.R. = N/A S.E. RUN = N/A
7042 P.C. STA = 576+07.25 7044 P.T. STA = 584+48.78	7045 P.C. STA = 586+10.18 7047 P.T. STA = 595+03.64	7049 P.C. STA = 601+74.11 7051 P.T. STA = 603+35.23	6006 P.C. STA. = 89+32.48 6008 P.T. STA. = 97+74.01

REVISIONS	
NAME	DATE

ILLINOIS DEPARTMENT OF TRANSPORTATION

**HORIZONTAL CONTROL  
 TR 88 (725E) CL**

SCALE: 1" = 100'  
 DATE: 03/06/2012

DRAWN BY: R.A.H.  
 CHECKED BY: J.M.M.

Default L:\DOT\030601\Draw\Sheets\030601\Draw\72829-sht-ATB-ALG-01.dwg 3/6/2012