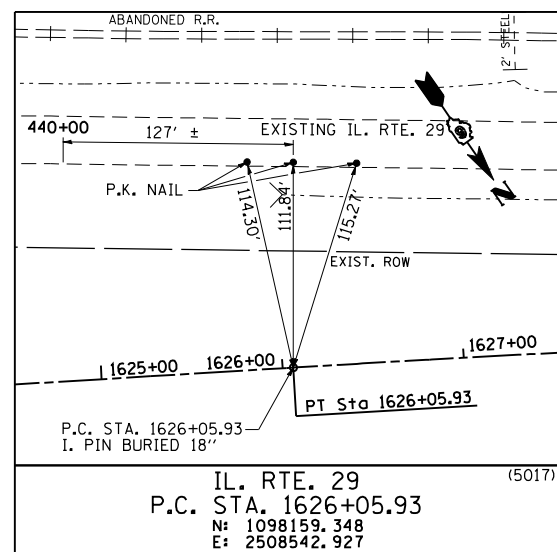
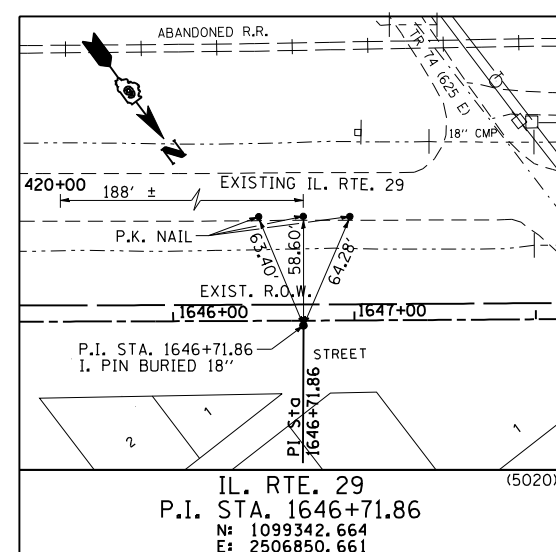


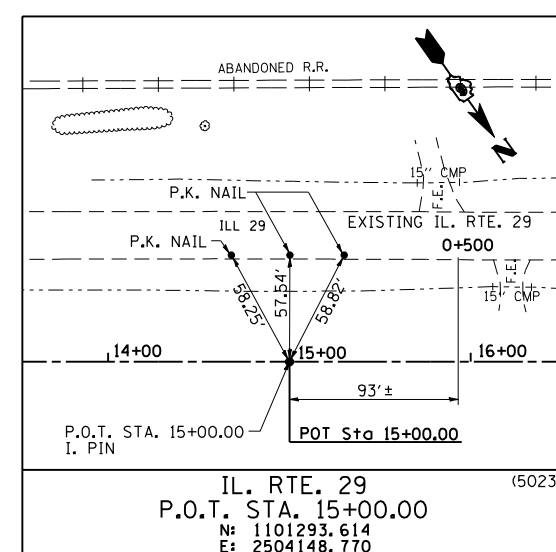
F.A. RTE.	SECTION	COUNTY	TOTAL SHEETS	SHEET NO.
75	84-12; 11-3	•	729	83
STA. N/A		TO STA. N/A		
FED. ROAD DIST. NO. 5 ILLINOIS FED. AID PROJECT				
• SANGAMON AND CHRISTIAN				



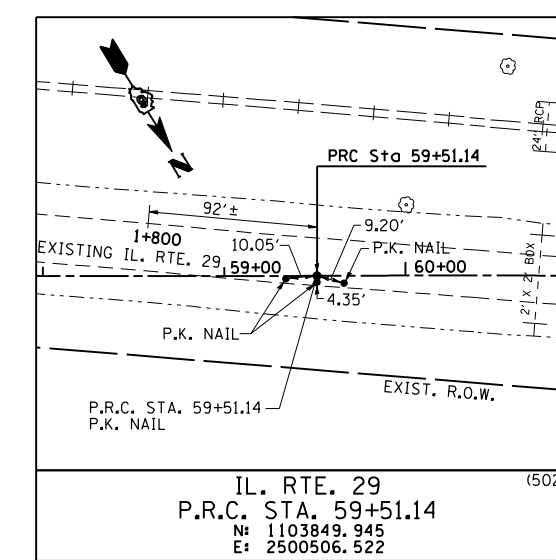
IL. RTE. 29
P.C. STA. 1626+05.93
N: 1098159.348
E: 2508542.927



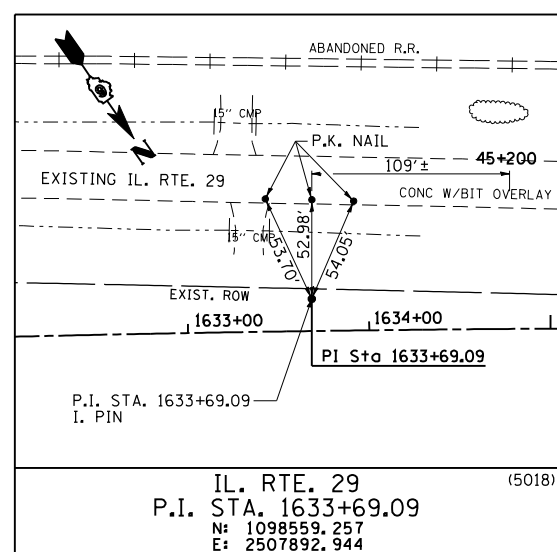
IL. RTE. 29
P.I. STA. 1646+71.86
N: 1099342.664
E: 2506850.661



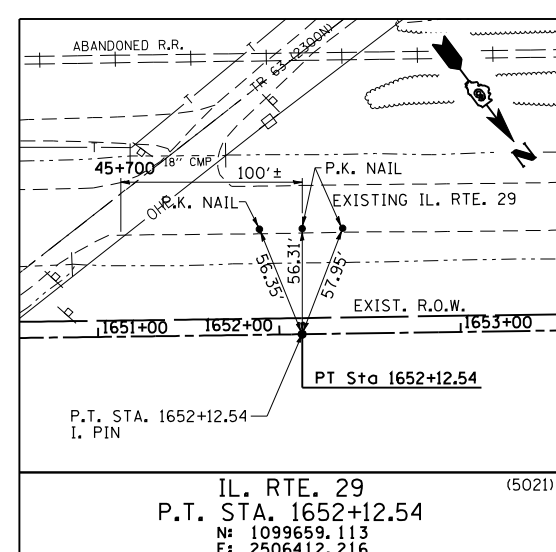
IL. RTE. 29
P.O.T. STA. 15+00.00
N: 1101293.614
E: 2504148.770



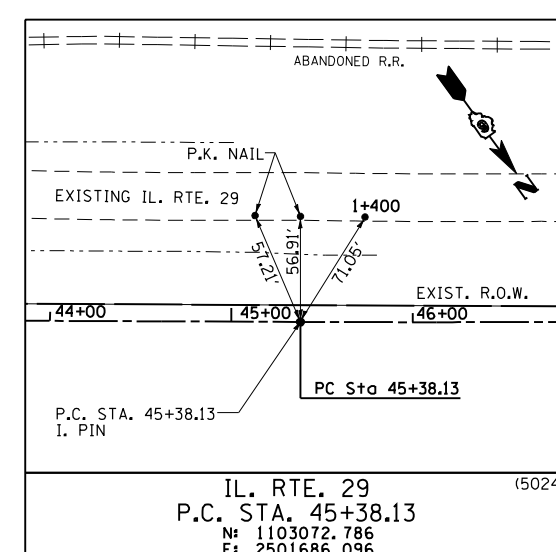
IL. RTE. 29
P.R.C. STA. 59+51.14
N: 1103849.945
E: 2500506.522



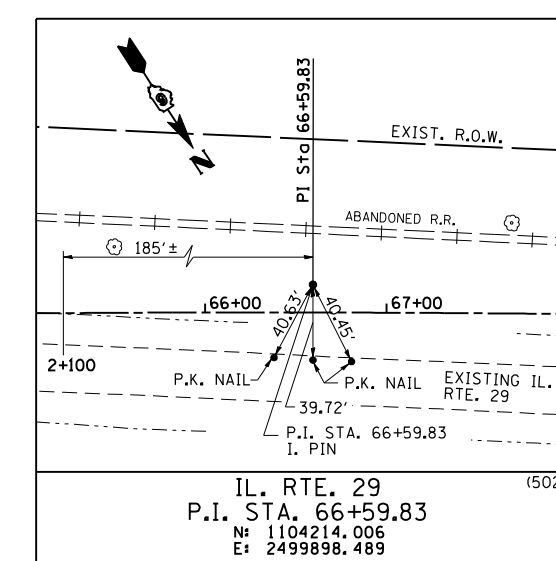
IL. RTE. 29
P.I. STA. 1633+69.09
N: 1098559.257
E: 2507892.944



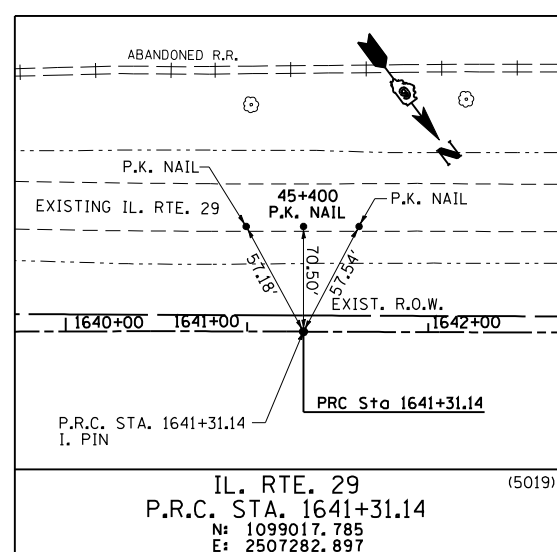
IL. RTE. 29
P.T. STA. 1652+12.54
N: 1099659.113
E: 2506412.216



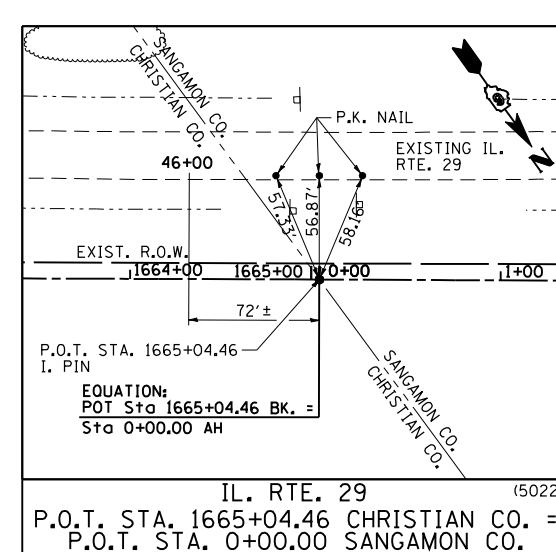
IL. RTE. 29
P.C. STA. 45+38.13
N: 1103072.786
E: 2501686.096



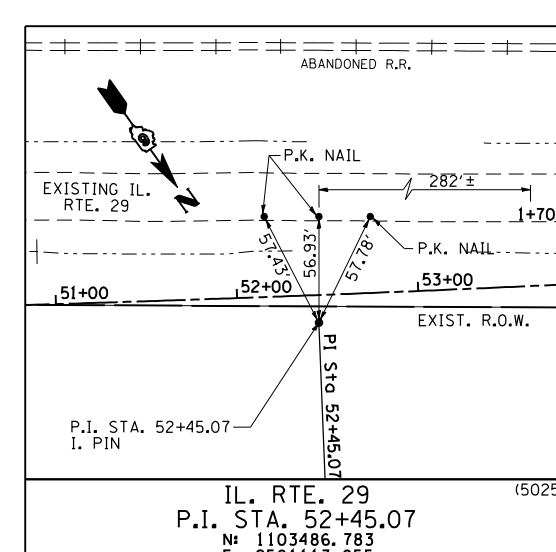
IL. RTE. 29
P.I. STA. 66+59.83
N: 1104214.006
E: 2499898.489



IL. RTE. 29
P.R.C. STA. 1641+31.14
N: 1099017.785
E: 2507282.897



IL. RTE. 29
P.O.T. STA. 1665+04.46
P.O.T. STA. 0+00.00 SANGAMON CO. =
P.O.T. STA. 0+00.00 CHRISTIAN CO. =
N: 1100415.192 E: 2505364.654



IL. RTE. 29
P.I. STA. 52+45.07
N: 1103486.783
E: 2501113.055

REVISIONS		ILLINOIS DEPARTMENT OF TRANSPORTATION
NAME	DATE	
		REFERENCE TIES IL. RTE. 29

SCALE: NONE
DATE: 03/06/2012
DRAWN BY: M.V.S.
CHECKED BY: J.M.M.

L:\DOT\030600\Draw\Sheets\030600\Draw\72829-sht-ATB_TIE5002.dgn
3/6/2012