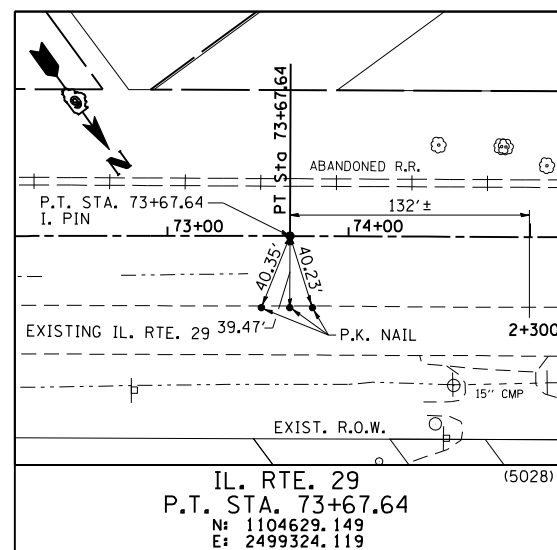
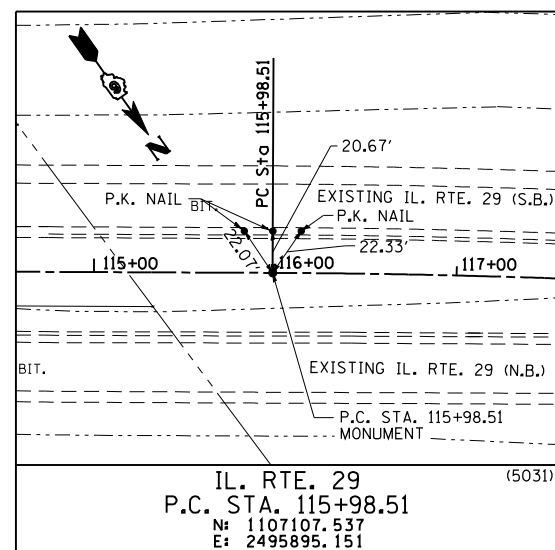


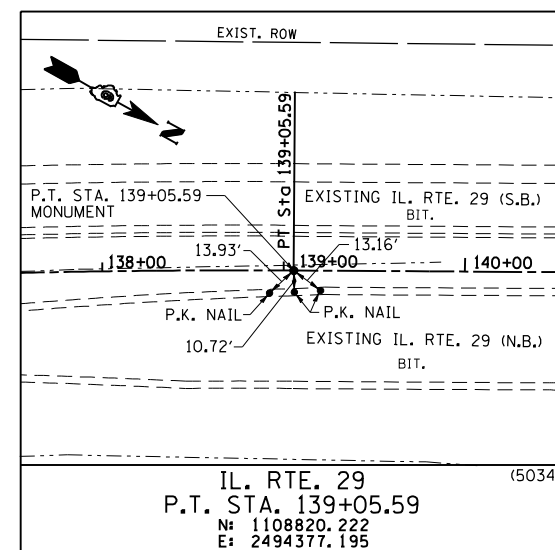
F.A. RTE.	SECTION	COUNTY	TOTAL SHEETS	SHEET NO.
75	84-12; 11-3	•	729	84
STA. N/A		TO STA. N/A		
FED. ROAD DIST. NO. 5 ILLINOIS FED. AID PROJECT				
• SANGAMON AND CHRISTIAN				



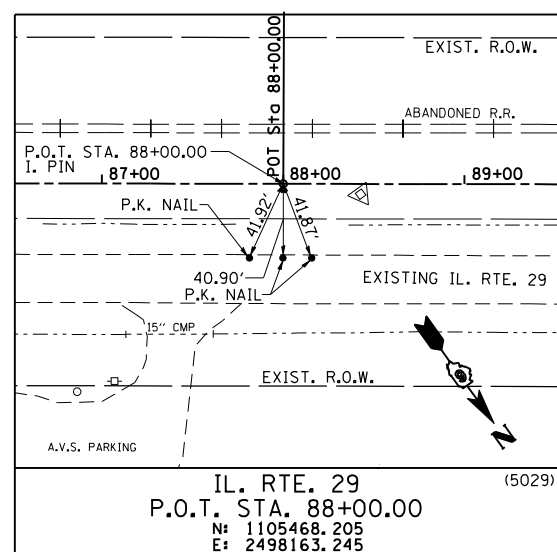
IL. RTE. 29
 P.T. STA. 73+67.64
 N: 1104629.149
 E: 2499324.119



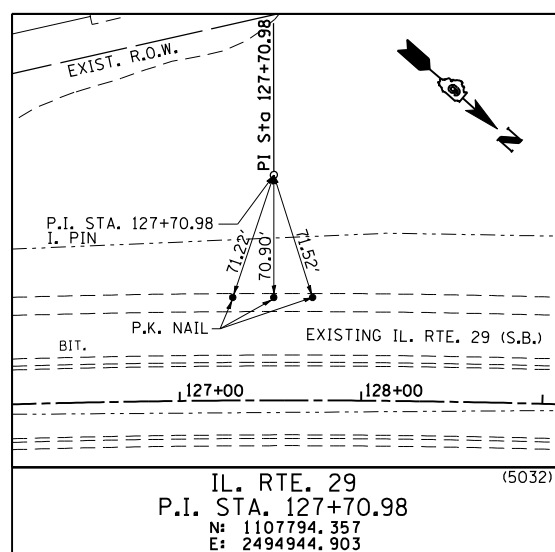
IL. RTE. 29
 P.C. STA. 115+98.51
 N: 1107107.537
 E: 2495895.151



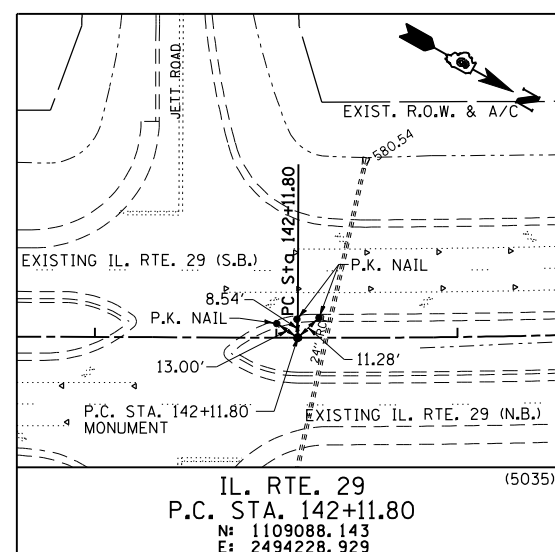
IL. RTE. 29
 P.T. STA. 139+05.59
 N: 1108820.222
 E: 2494377.195



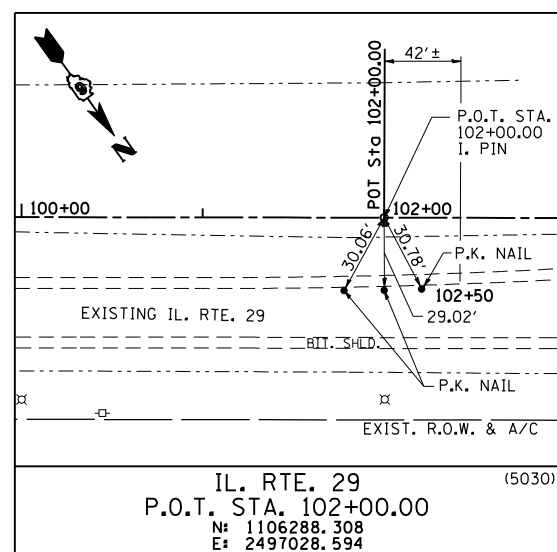
IL. RTE. 29
 P.O.T. STA. 88+00.00
 N: 1105468.205
 E: 2498163.245



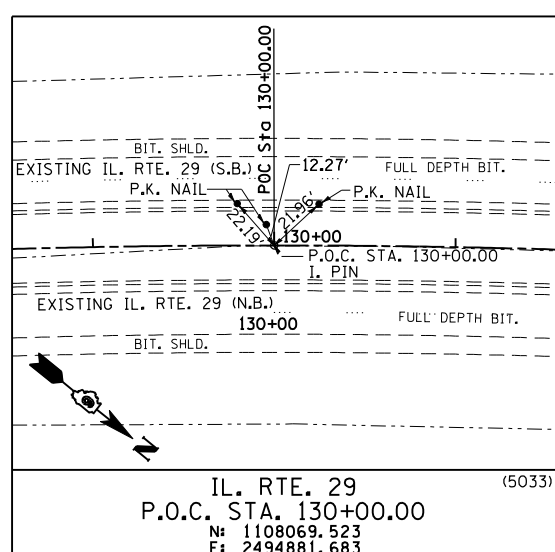
IL. RTE. 29
 P.I. STA. 127+70.98
 N: 1107794.357
 E: 2494944.903



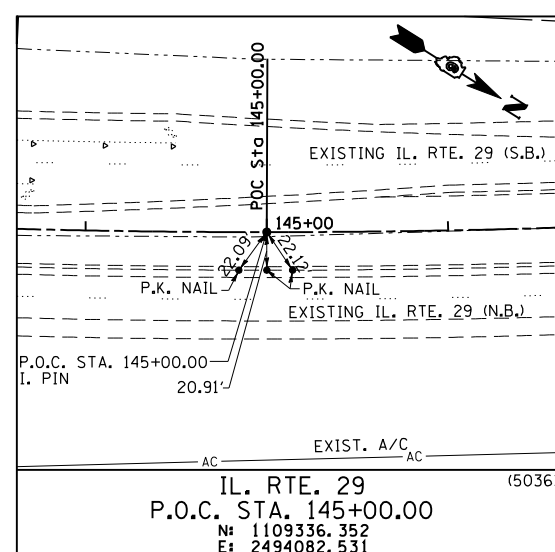
IL. RTE. 29
 P.C. STA. 142+11.80
 N: 1109088.143
 E: 2494228.929



IL. RTE. 29
 P.O.T. STA. 102+00.00
 N: 1106288.308
 E: 2497028.594



IL. RTE. 29
 P.O.C. STA. 130+00.00
 N: 1108069.523
 E: 2494881.683



IL. RTE. 29
 P.O.C. STA. 145+00.00
 N: 1109336.352
 E: 2494082.531

REVISIONS	
NAME	DATE

ILLINOIS DEPARTMENT OF TRANSPORTATION

REFERENCE TIES
 IL. RTE. 29

SCALE: NONE
 DATE: 03/06/2012

DRAWN BY: M.V.S.
 CHECKED BY: J.M.M.

Default L:\DOT\030601\Draw\Sheets\0672829-sht-ATB_TIE5003.dgn
 3/6/2012