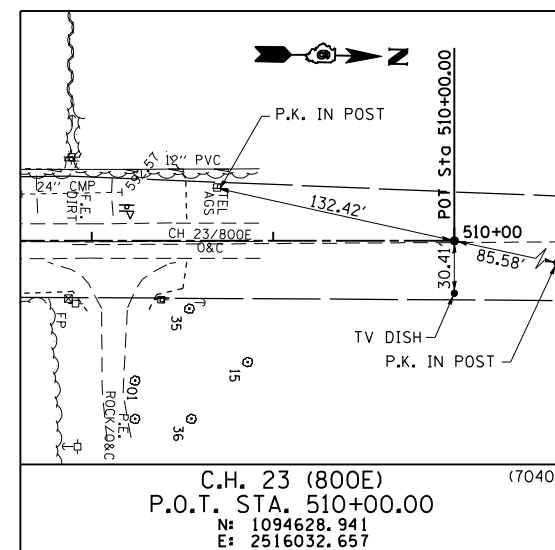
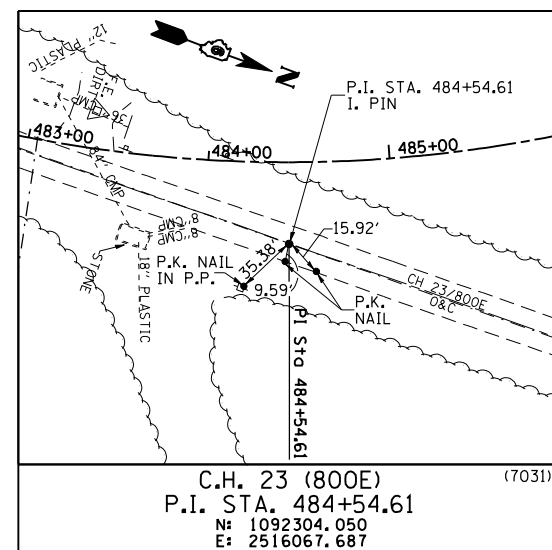
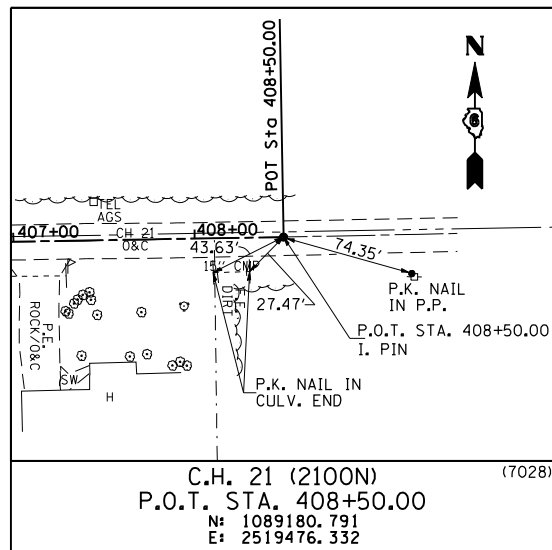
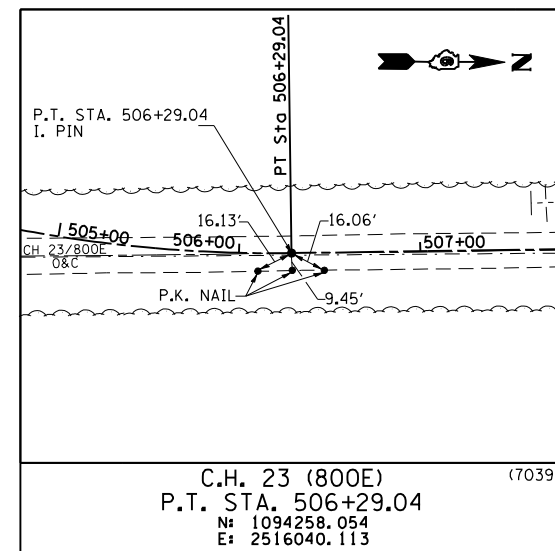
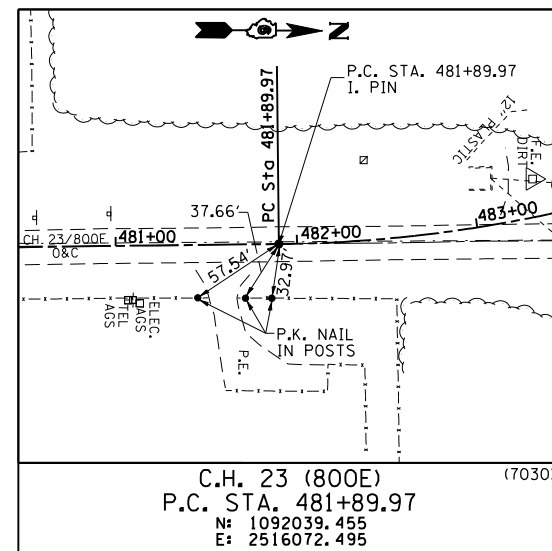
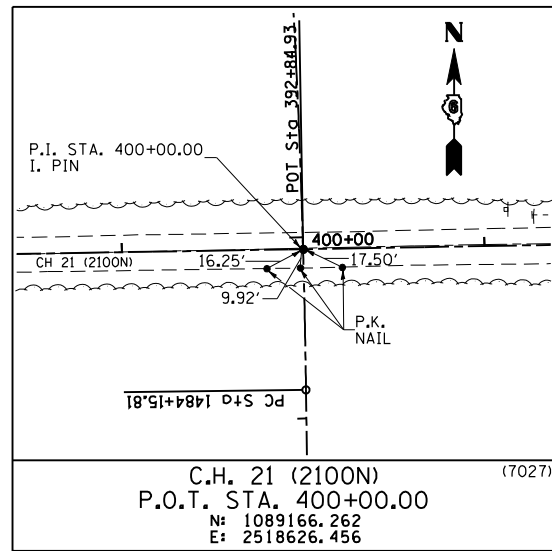
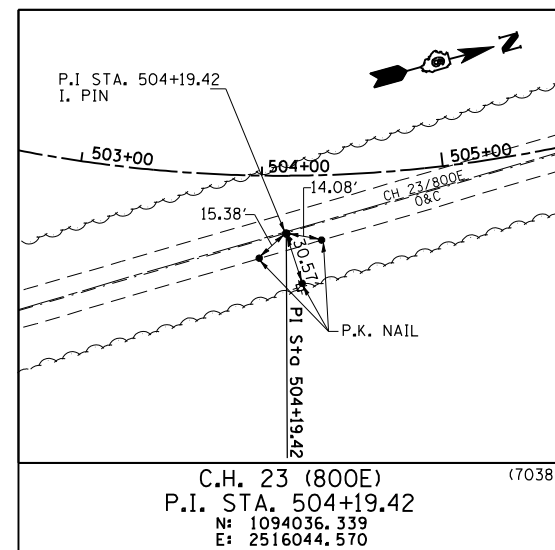
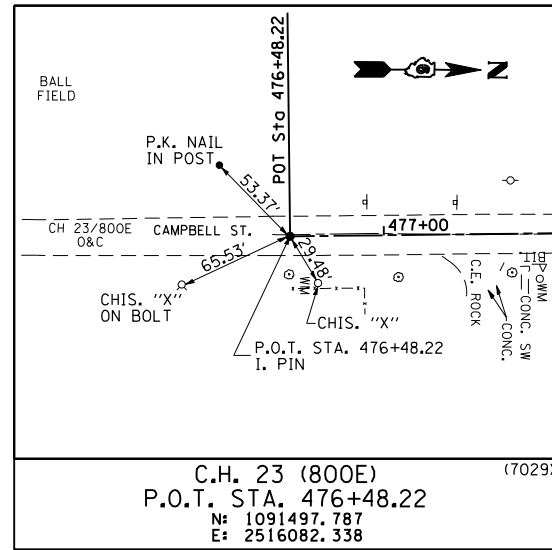
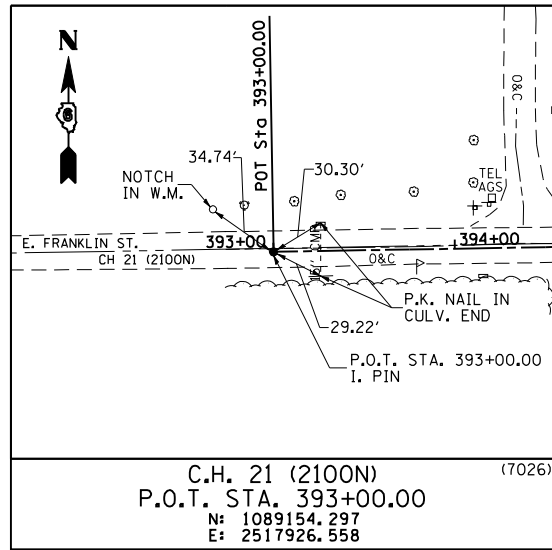


F.A. RTE.	SECTION	COUNTY	TOTAL SHEETS	SHEET NO.
75	84-12; 11-3	•	729	87
STA. N/A		TO STA. N/A		
FED. ROAD DIST. NO. 5		ILLINOIS FED. AID PROJECT		
• SANGAMON AND CHRISTIAN				



COORDINATE TIES

PROP. CH 23 (800E) STATION	NORTHING	EASTING
(7032) P. T. 486+99.02	1092507.683	2515898.670
(7033) P. C. 488+72.36	1092641.063	2515787.964
(7034) P. I. 494+13.55	1093057.491	2515442.324
(7035) P. T. 498+11.33	1093123.000	2516368.606
(7036) P. O. T. 500+00.00	1093679.114	2515824.783
(7037) P. C. 501+97.66	1093847.466	2515928.364

NOTE: POINTS ARE AT LOCATIONS WHERE EXISTING TIE MONUMENTS ARE NOT AVAILABLE FOR REFERENCE.

REVISIONS		ILLINOIS DEPARTMENT OF TRANSPORTATION
NAME	DATE	
		REFERENCE TIES C.H. 21 (2100N) C.H. 23 (800E)

SCALE: NONE
DATE: 03/06/2012
DRAWN BY: M.V.S.
CHECKED BY: J.M.M.

REFERENCE TIES: CH 21 (2100N)-CH 23 (800E)