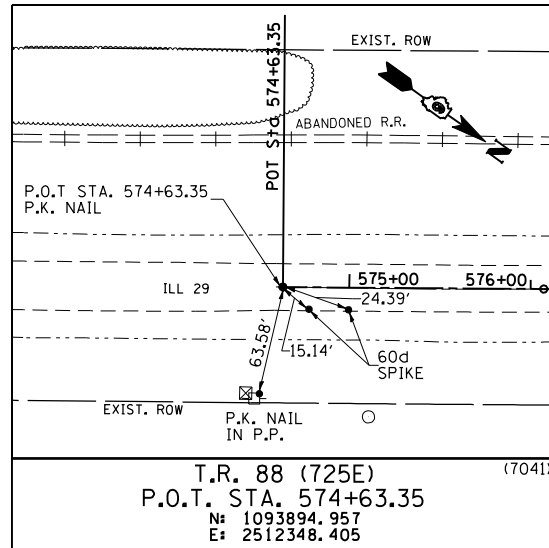
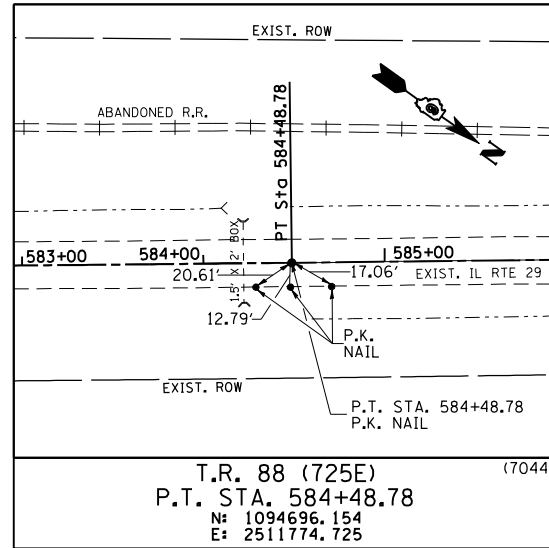


F.A. RTE.	SECTION	COUNTY	TOTAL SHEETS	SHEET NO.
75	84-12; 11-3	•	729	88
STA. N/A		TO STA. N/A		
FED. ROAD DIST. NO. 5 ILLINOIS FED. AID PROJECT				
• SANGAMON AND CHRISTIAN				



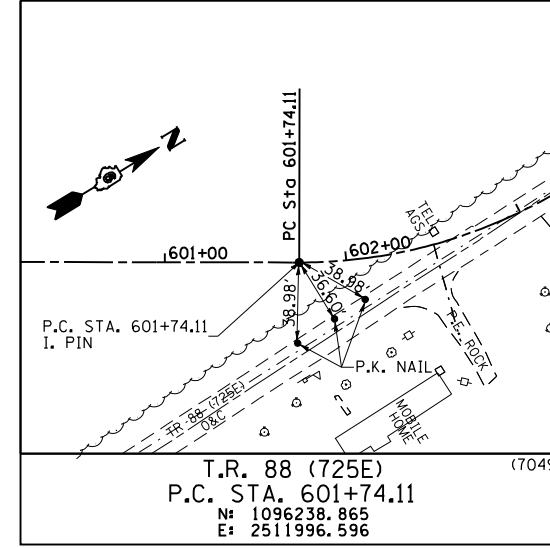
T.R. 88 (725E)  
 P.O.T. STA. 574+63.35  
 N: 1093894.957  
 E: 2512348.405

(7041)



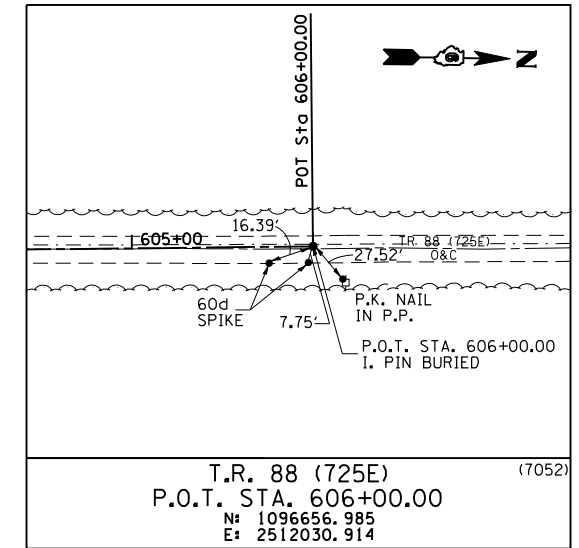
T.R. 88 (725E)  
 P.T. STA. 584+48.78  
 N: 1094696.154  
 E: 2511774.725

(7044)



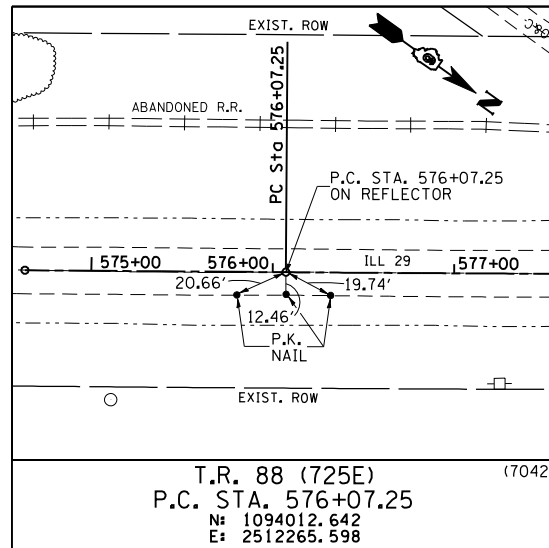
T.R. 88 (725E)  
 P.C. STA. 601+74.11  
 N: 1096238.865  
 E: 2511996.596

(7049)



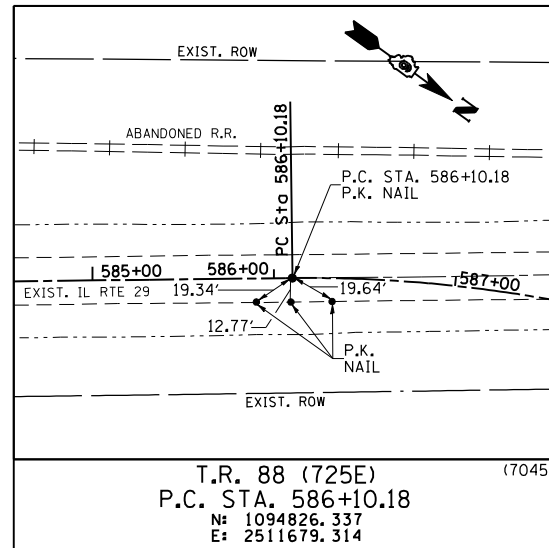
T.R. 88 (725E)  
 P.O.T. STA. 606+00.00  
 N: 1096656.985  
 E: 2512030.914

(7052)



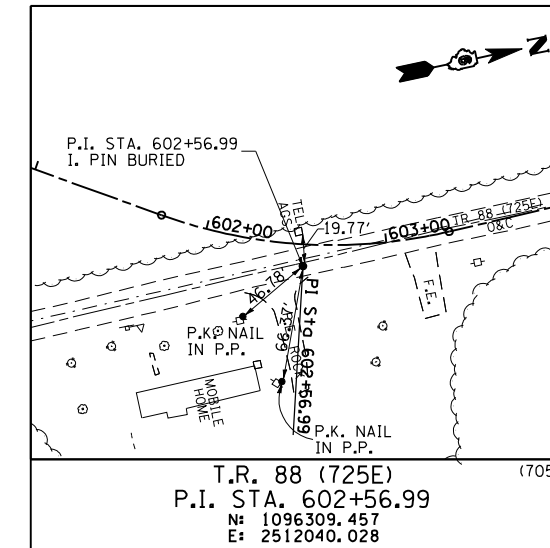
T.R. 88 (725E)  
 P.C. STA. 576+07.25  
 N: 1094012.642  
 E: 2512265.598

(7042)



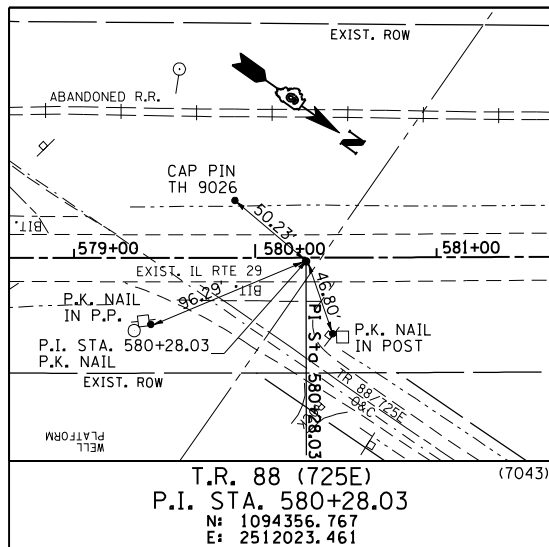
T.R. 88 (725E)  
 P.C. STA. 586+10.18  
 N: 1094826.337  
 E: 2511679.314

(7045)



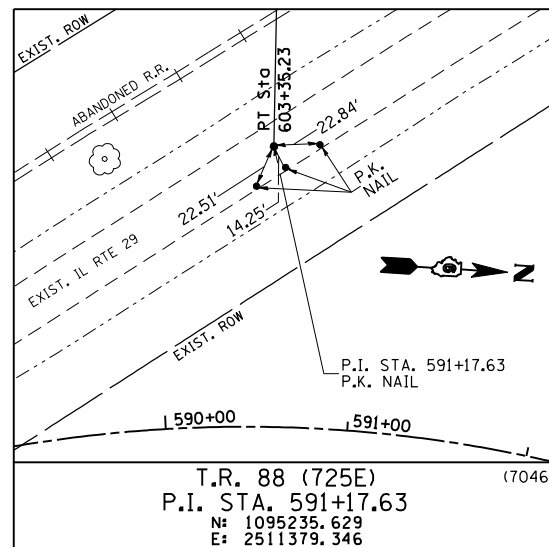
T.R. 88 (725E)  
 P.I. STA. 602+56.99  
 N: 1096309.457  
 E: 2512040.028

(7050)



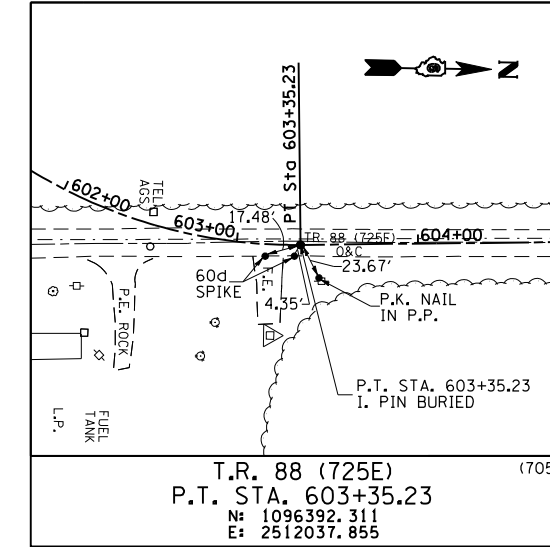
T.R. 88 (725E)  
 P.I. STA. 580+28.03  
 N: 1094356.767  
 E: 2512023.461

(7043)



T.R. 88 (725E)  
 P.I. STA. 591+17.63  
 N: 1095235.629  
 E: 2511379.346

(7046)



T.R. 88 (725E)  
 P.T. STA. 603+35.23  
 N: 1096392.311  
 E: 2512037.855

(7051)

COORDINATE TIES

PROP. TR 88 (725E) STATION	NORTHING	EASTING
(7047) P. T. 595+03.64	1095667.824	2511645.257
(7048) P. O. T. 600+00.00	1096090.577	2511905.361

NOTE: POINTS ARE AT LOCATIONS WHERE EXISTING TIE MONUMENTS ARE NOT AVAILABLE FOR REFERENCE.

REVISIONS	
NAME	DATE

ILLINOIS DEPARTMENT OF TRANSPORTATION

REFERENCE TIES  
 T.R. 88 (725E)

SCALE: NONE  
 DATE: 03/06/2012

DRAWN BY: M.V.S.  
 CHECKED BY: J.M.M.

REFERENCE TIES: TR 88 (725E)