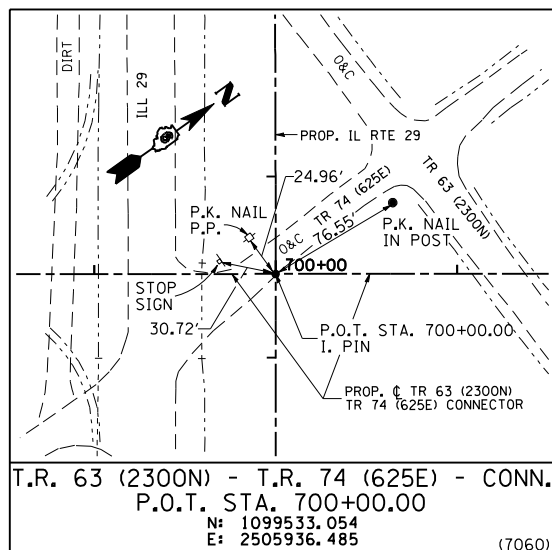
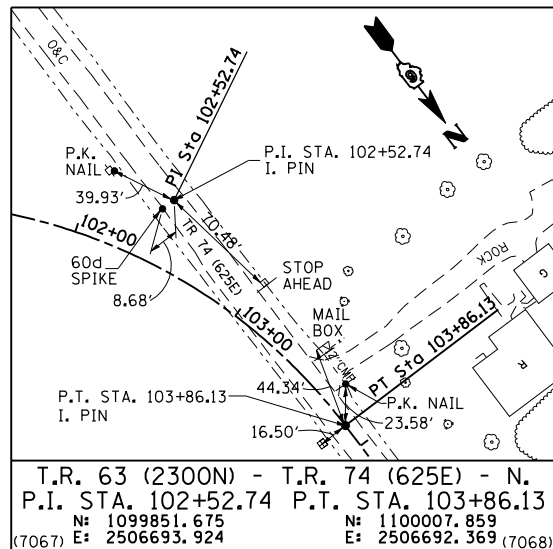


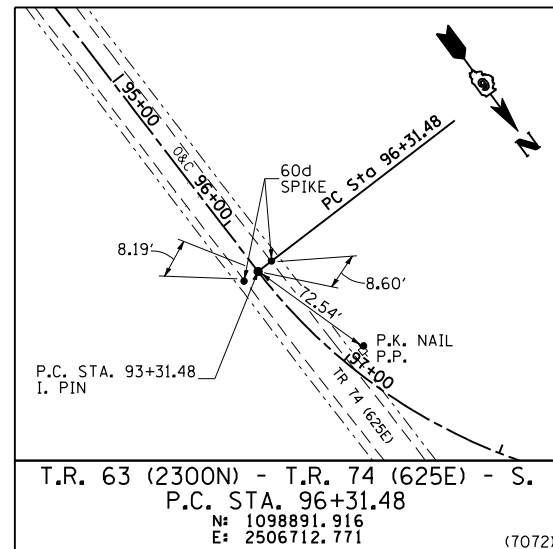
F.A. RTE.	SECTION	COUNTY	TOTAL SHEETS	SHEET NO.
75	84-12; 11-3	•	729	89
STA. N/A TO STA. N/A				
FED. ROAD DIST. NO. 5 ILLINOIS FED. AID PROJECT				
• SANGAMON AND CHRISTIAN				



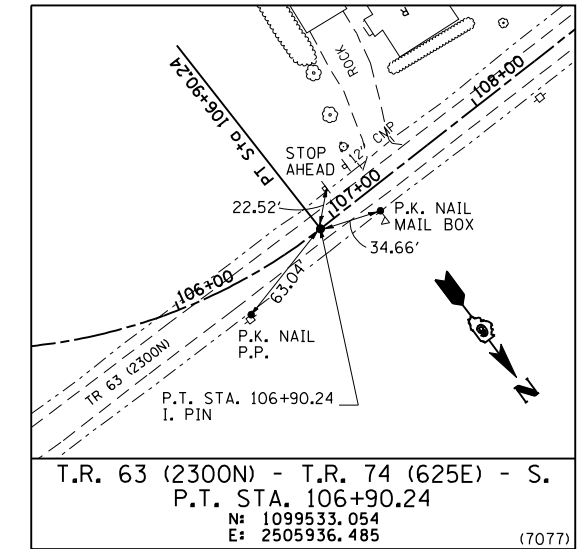
T.R. 63 (2300N) - T.R. 74 (625E) - CONN.
P.O.T. STA. 700+00.00
N: 1099533.054
E: 2505936.485 (7060)



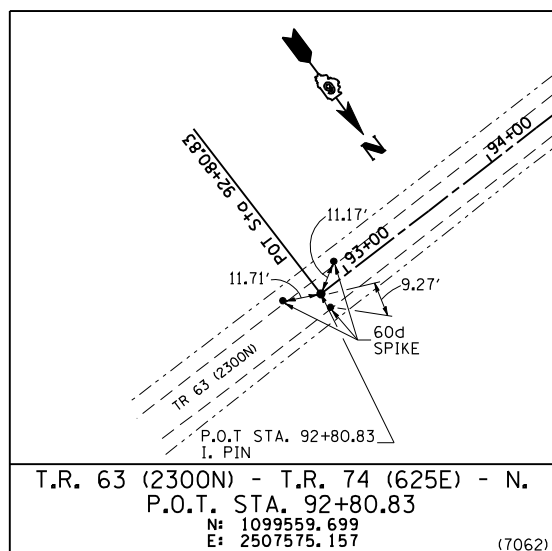
T.R. 63 (2300N) - T.R. 74 (625E) - N.
P.I. STA. 102+52.74 P.T. STA. 103+86.13
N: 1099851.675 E: 2506693.924
N: 1100007.859 E: 2506692.369 (7067)



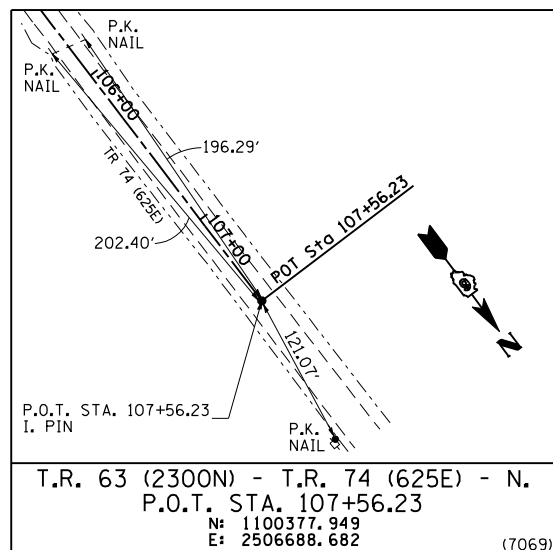
T.R. 63 (2300N) - T.R. 74 (625E) - S.
P.C. STA. 96+31.48
N: 1098891.916
E: 2506712.771 (7072)



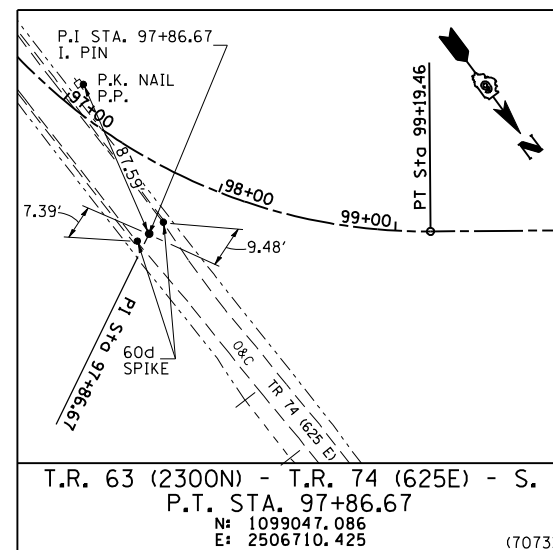
T.R. 63 (2300N) - T.R. 74 (625E) - S.
P.T. STA. 106+90.24
N: 1099533.054
E: 2505936.485 (7077)



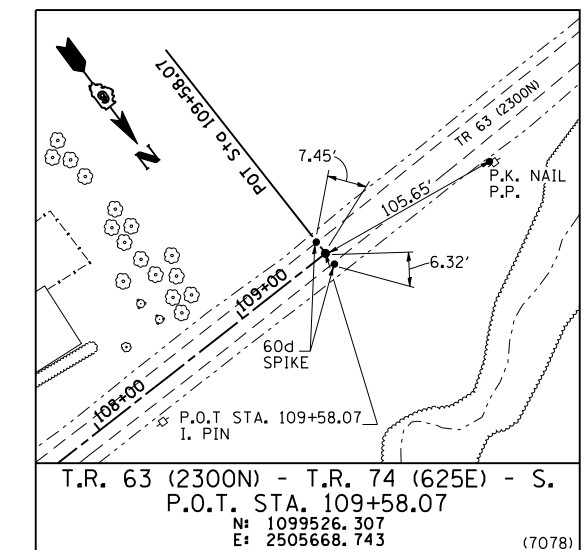
T.R. 63 (2300N) - T.R. 74 (625E) - N.
P.O.T. STA. 92+80.83
N: 1099559.699
E: 2507575.157 (7062)



T.R. 63 (2300N) - T.R. 74 (625E) - N.
P.O.T. STA. 107+56.23
N: 1100377.949
E: 2506688.682 (7069)



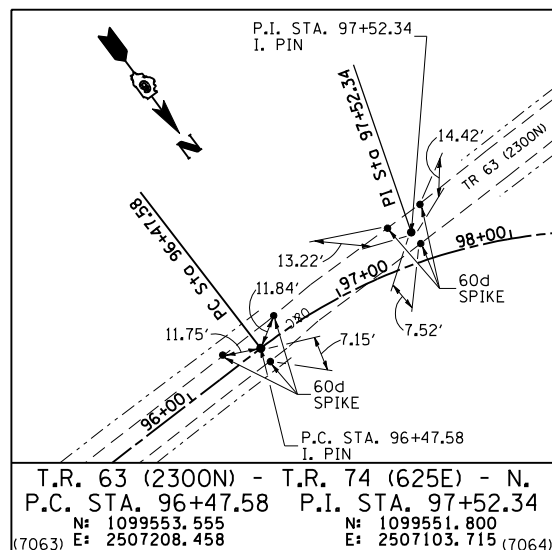
T.R. 63 (2300N) - T.R. 74 (625E) - S.
P.T. STA. 97+86.67
N: 1099047.086
E: 2506710.425 (7073)



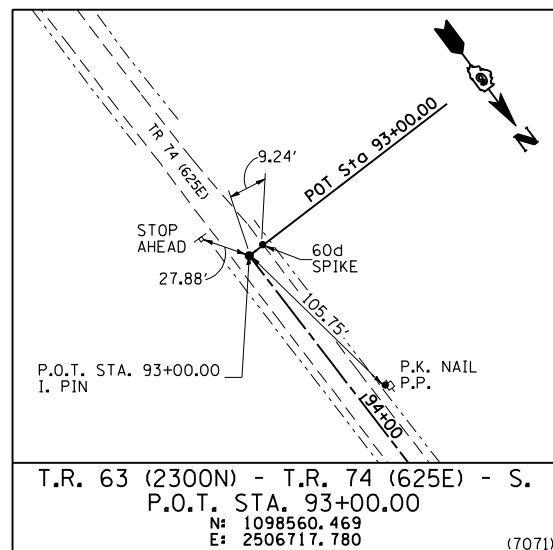
T.R. 63 (2300N) - T.R. 74 (625E) - S.
P.O.T. STA. 109+58.07
N: 1099526.307
E: 2506668.743 (7078)

COORDINATE TIES

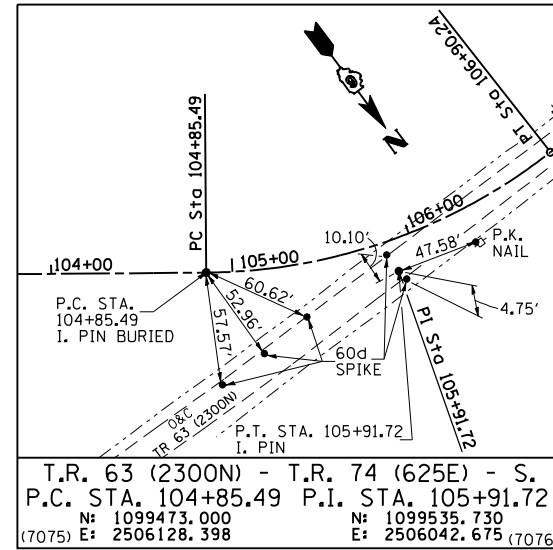
PROP. TR 63 (2300N) TR 74 (625E) STATION	NORTHING	EASTING
(7059) P. O. T. 696+81.00 CONN.	1099186.294	2506520.192
(7061) P. O. T. 703+20.56 CONN.	1099702.423	2506897.883
(7065) P. T. 98+49.70 N.	1099613.664	2507019.175
(7066) P. C. 100+96.54 N.	1099759.437	2506819.971
(7074) P. T. 99+19.46 S.	1099138.731	2506585.188



T.R. 63 (2300N) - T.R. 74 (625E) - N.
P.C. STA. 96+47.58 P.I. STA. 97+52.34
N: 1099553.555 E: 2507208.458
N: 1099551.800 E: 2507103.715 (7063)



T.R. 63 (2300N) - T.R. 74 (625E) - S.
P.O.T. STA. 93+00.00
N: 1098560.469
E: 2506717.780 (7071)



T.R. 63 (2300N) - T.R. 74 (625E) - S.
P.C. STA. 104+85.49 P.I. STA. 105+91.72
N: 1099473.000 E: 2506128.398
N: 1099535.730 E: 2506042.675 (7075)

NOTE: POINTS ARE AT LOCATIONS WHERE EXISTING TIE MONUMENTS ARE NOT AVAILABLE FOR REFERENCE.

REVISIONS		ILLINOIS DEPARTMENT OF TRANSPORTATION
NAME	DATE	

REFERENCE TIES
T.R. 63 (2300N)
T.R. 74 (625E)

SCALE: NONE
DATE: 03/06/2012
DRAWN BY: M.V.S.
CHECKED BY: J.M.M.

REFERENCE TIES: TR 63 (2300N)/TR74 (625E)

Default L:\DOT\030600\Draw\Sheets\030600\Draw\72829-sht-ATB-TIES008.dgn 3/6/2012