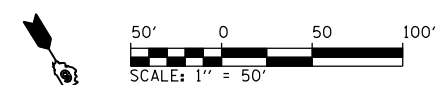


F.A.P. RTE.	SECTION	COUNTY	TOTAL SHEETS	SHEET NO.
75	84-12; 11-3		729	102
STA. 1538+00 TO STA. 1553+00				
FED. ROAD DIST. NO. 5 (ILLINOIS) FED. AID PROJECT				
• SANGAMON AND CHRISTIAN				



PLAN	DATE	BY
SURVEYED		
PLOTTED		
CHECKED		
NOTE BOOK NO.		
FILE NAME		

PROFILE	DATE	BY
SURVEYED		
PLOTTED		
CHECKED		
NOTE BOOK NO.		
STRUCTURE NOTATIONS CHFD		

PinProfShts01  
L:\DOT\303660\Draw Sheets\Draw Sheets\72829-sht-PinProfShts01.dgn  
3/16/2012

