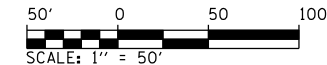
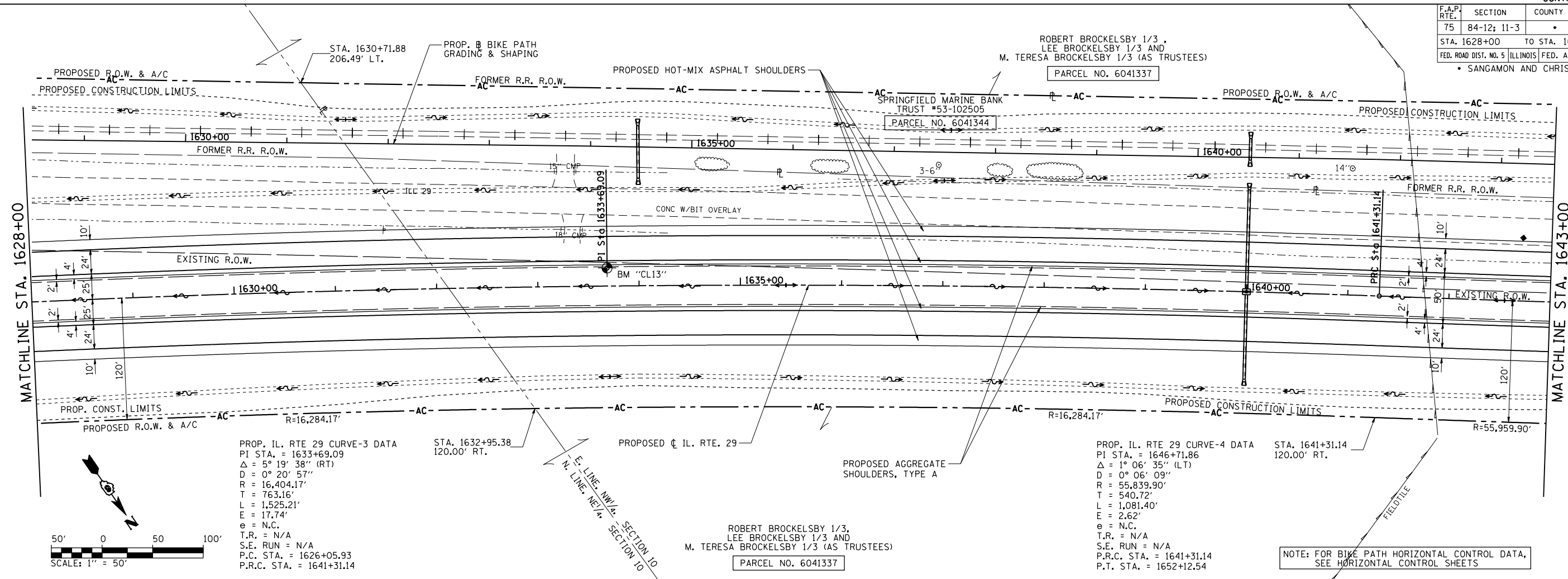


F.A.P. RTE.	SECTION	COUNTY	TOTAL SHEETS	SHEET NO.
75	84-12: 11-3		729	108
STA. 1628+00 TO STA. 1643+00				
FED. ROAD DIST. NO. 5 ILLINOIS FED. AID PROJECT				
• SANGAMON AND CHRISTIAN				

PLAN	SURVEYED	BY	DATE
NOTE BOOK NO.	PLotted		
	Checked		
	By		
	File Name		

PROFILE	SURVEYED	BY	DATE
NOTE BOOK NO.	Plotted		
	Checked		
	By		
	File Name		

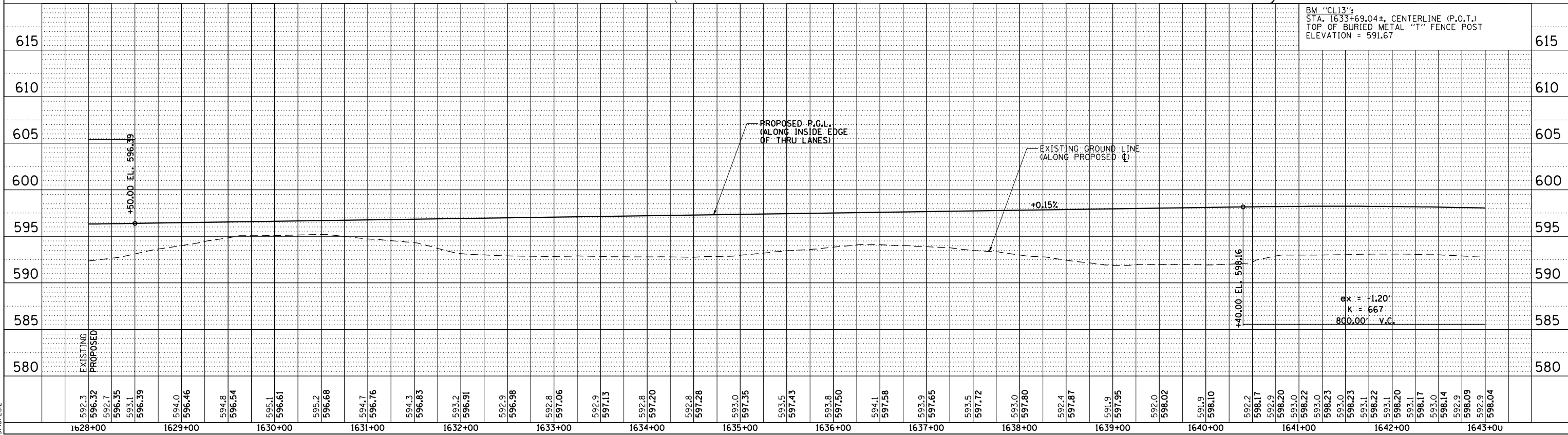
PinPrOfShts017
L:\DOT\030660\Draw Sheets\0672829-sht-PinPrOfShts017.dgn
3/16/2012



PROP. IL RTE 29 CURVE-3 DATA
 PI STA. = 1633+69.09
 Δ = 5° 19' 38'' (RT)
 D = 0° 20' 57''
 R = 16,404.17'
 T = 763.16'
 L = 1,525.21'
 E = 17.74'
 e = N.C.
 T.R. = N/A
 S.E. RUN = N/A
 P.C. STA. = 1626+05.93
 P.R.C. STA. = 1641+31.14

PROP. IL RTE 29 CURVE-4 DATA
 PI STA. = 1646+71.86
 Δ = 1° 06' 35'' (LT)
 D = 0° 06' 09''
 R = 55,839.90'
 T = 540.72'
 L = 1,081.40'
 E = 2.62'
 e = N.C.
 T.R. = N/A
 S.E. RUN = N/A
 P.R.C. STA. = 1641+31.14
 P.T. STA. = 1652+12.54

NOTE: FOR BIKE PATH HORIZONTAL CONTROL DATA, SEE HORIZONTAL CONTROL SHEETS



BM "CL13":
 STA. 1633+69.04+, CENTERLINE (P.O.T.)
 TOP OF BURIED METAL "T" FENCE POST
 ELEVATION = 591.67

G = -1.20'
 K = 667
 800.00' V.C.

PLAN & PROFILE: IL RTE 29 - STA. 1628+00 TO STA. 1643+00