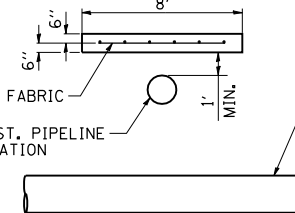
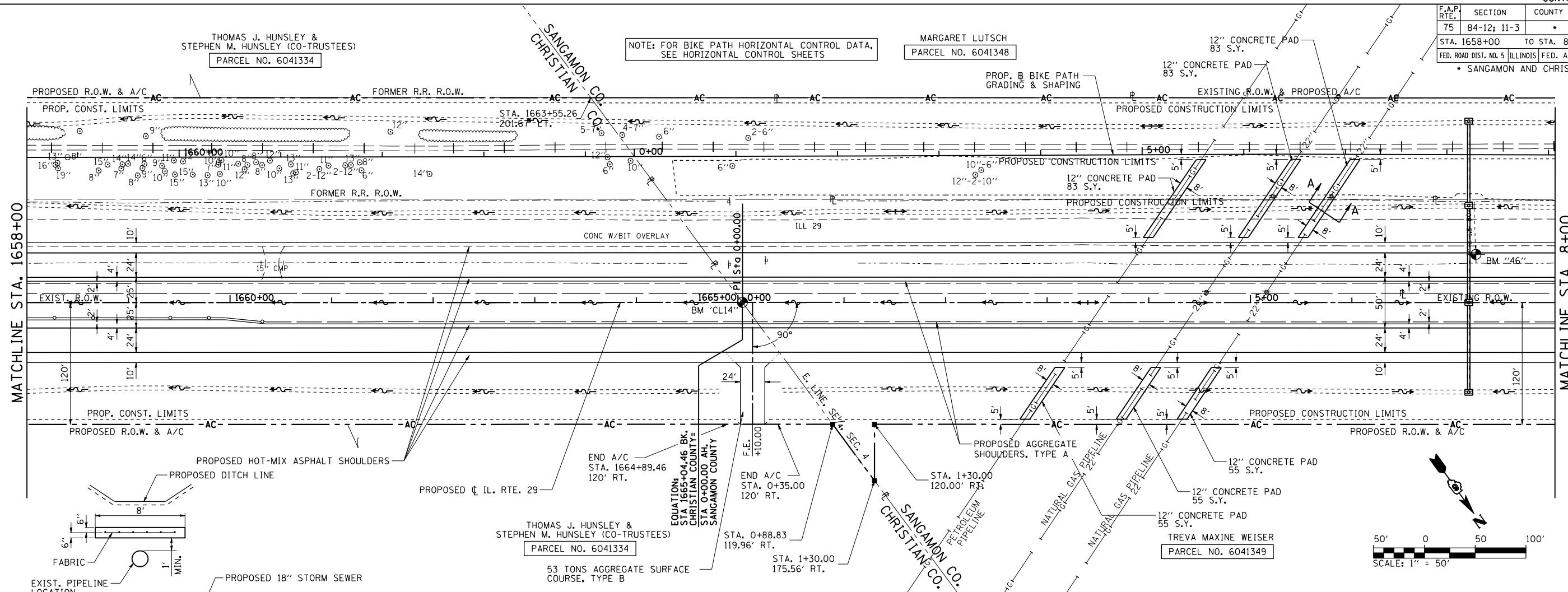


| F.A.P. RTE. | SECTION | COUNTY | TOTAL SHEETS | SHEET NO. |
|---|------------|--------|--------------|-----------|
| 75 | 84-12-11-3 | | 729 | 110 |
| STA. 1658+00 TO STA. 8+00 | | | | |
| FED. ROAD DIST. NO. 5 (ILLINOIS) FED. AID PROJECT | | | | |
| • SANGAMON AND CHRISTIAN | | | | |

| | | |
|------|-----------|------|
| PLAN | SURVEYED | DATE |
| | PLotted | |
| | Checked | |
| | By | |
| | File Name | |

| | | |
|---------|-----------|------|
| PROFILE | SURVEYED | DATE |
| | Plotted | |
| | Checked | |
| | By | |
| | File Name | |

PinPr of Shts 019
L:\DOT\030600\Draw Sheets\84-12-11-3-72829-sht-PinPr of Shts 019.dgn
3/16/2012



NOTE 1. WELDED WIRE FABRIC SHALL BE 6x6 - W4.0xW4.0 WEIGHT 58 LBS PER 100 FT.
2. THE UTILITY COMPANY SHALL BE NOTIFIED PRIOR TO FOR CONSTRUCTION OF CONCRETE PADS.

