

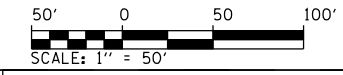
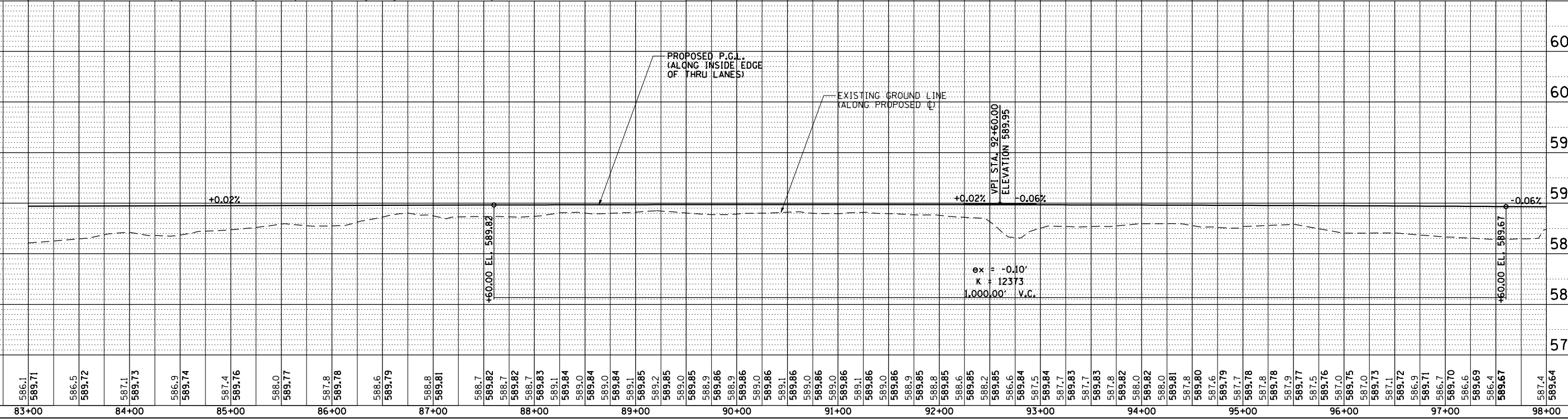
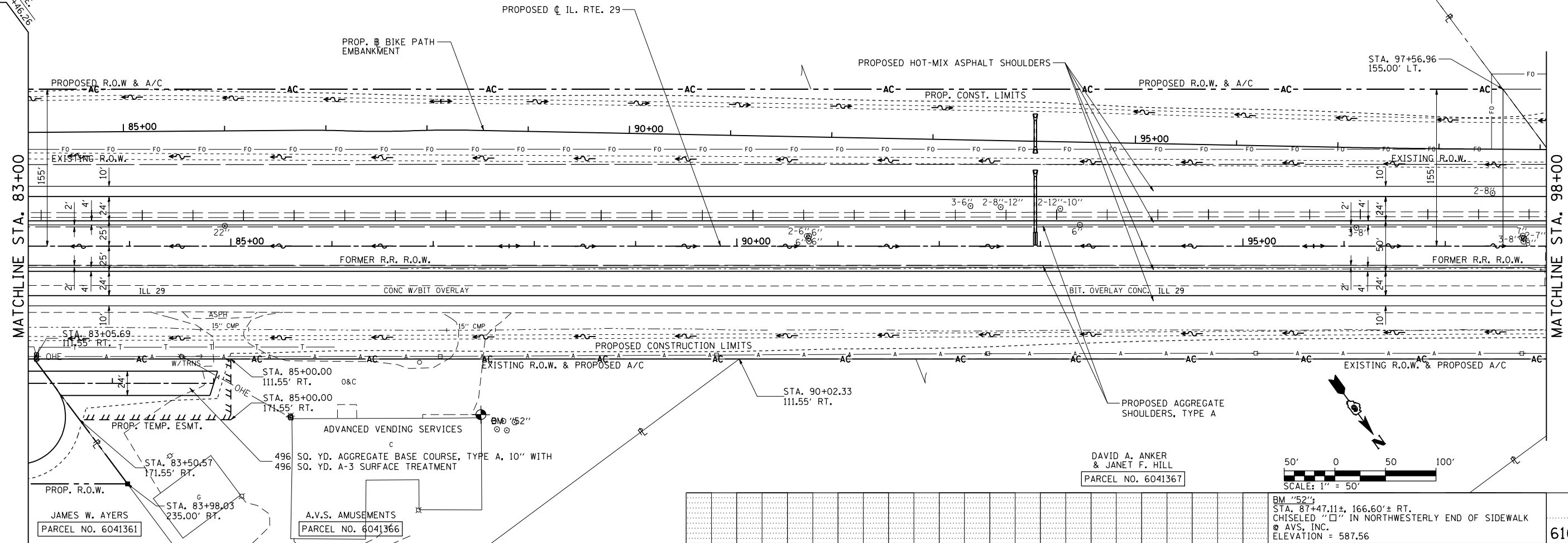
F.A.P. RTE.	SECTION	COUNTY	TOTAL SHEETS	SHEET NO.
75	84-12: 11-3	•	729	116
STA. 83+00 TO STA. 98+00		FED. ROAD DIST. NO. 5 (ILLINOIS) FED. AID PROJECT		
• SANGAMON AND CHRISTIAN				

NOTE: FOR BIKE PATH HORIZONTAL CONTROL DATA, SEE HORIZONTAL CONTROL SHEETS

DAVID A. ANKER & JANET F. HILL
PARCEL NO. 6041365

PLAN	DATE
SURVEYED	
PLotted	
NOTE BOOK	
NO.	

PROFILE	DATE
SURVEYED	
PLotted	
NOTE BOOK	
NO.	



DAVID A. ANKER & JANET F. HILL
PARCEL NO. 6041367

BM "52"
STA. 87+47.11±, 166.60± RT.
CHISELED "□" IN NORTHWESTERLY END OF SIDEWALK
@ AVS, INC.
ELEVATION = 587.56

PinProfShts025
L:\DOT\0306601\Draw Sheets\672829-sht-PinProfShts04.dgn
3/26/2012