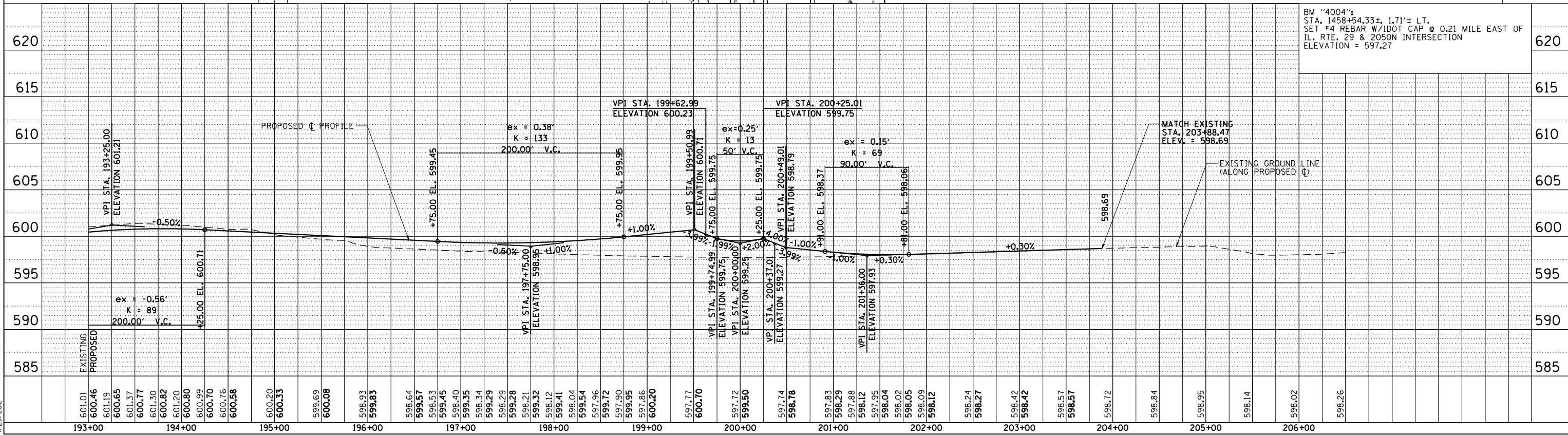
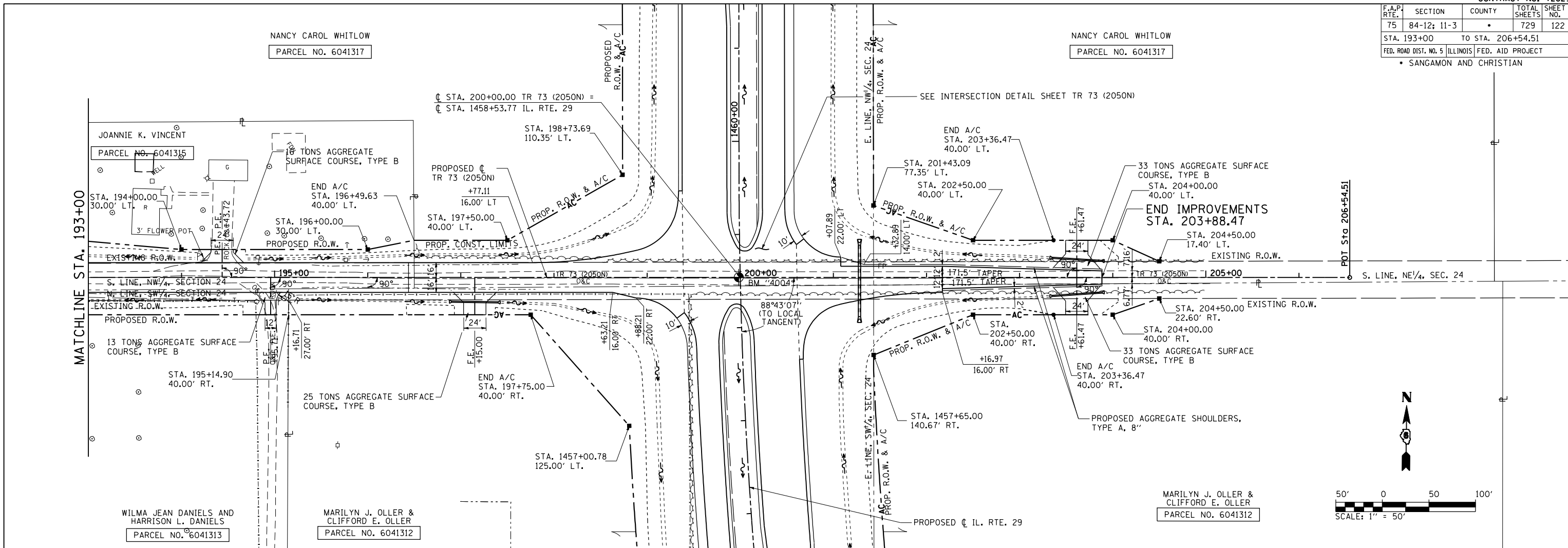


F.A.P. RTE.	SECTION	COUNTY	TOTAL SHEETS	SHEET NO.
75	84-12; 11-3	•	729	122
STA. 193+00		TO STA. 206+54.51		
FED. ROAD DIST. NO. 5 ILLINOIS FED. AID PROJECT				
• SANGAMON AND CHRISTIAN				

PLAN	SURVEYED	BY	DATE
	NOTED		
	CHECKED		
	BY		
	NO.		

PROFILE	SURVEYED	BY	DATE
	NOTED		
	CHECKED		
	BY		
	NO.		

PinPrOfShts033
L:\DOT\10306601\Draw Sheets\672829-sht-PinPrOfShts030.dgn
4/25/2012



PLAN & PROFILE: TR 73 (2050N) - STA. 193+00 TO STA. 206+54.51