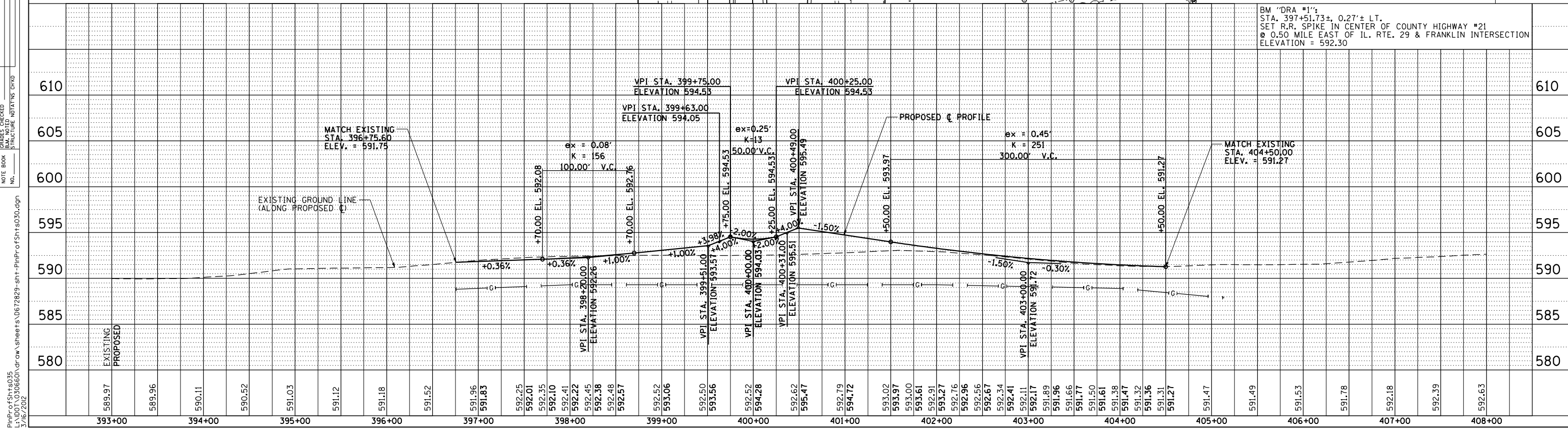
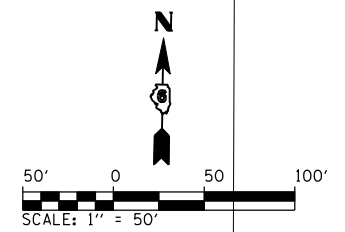
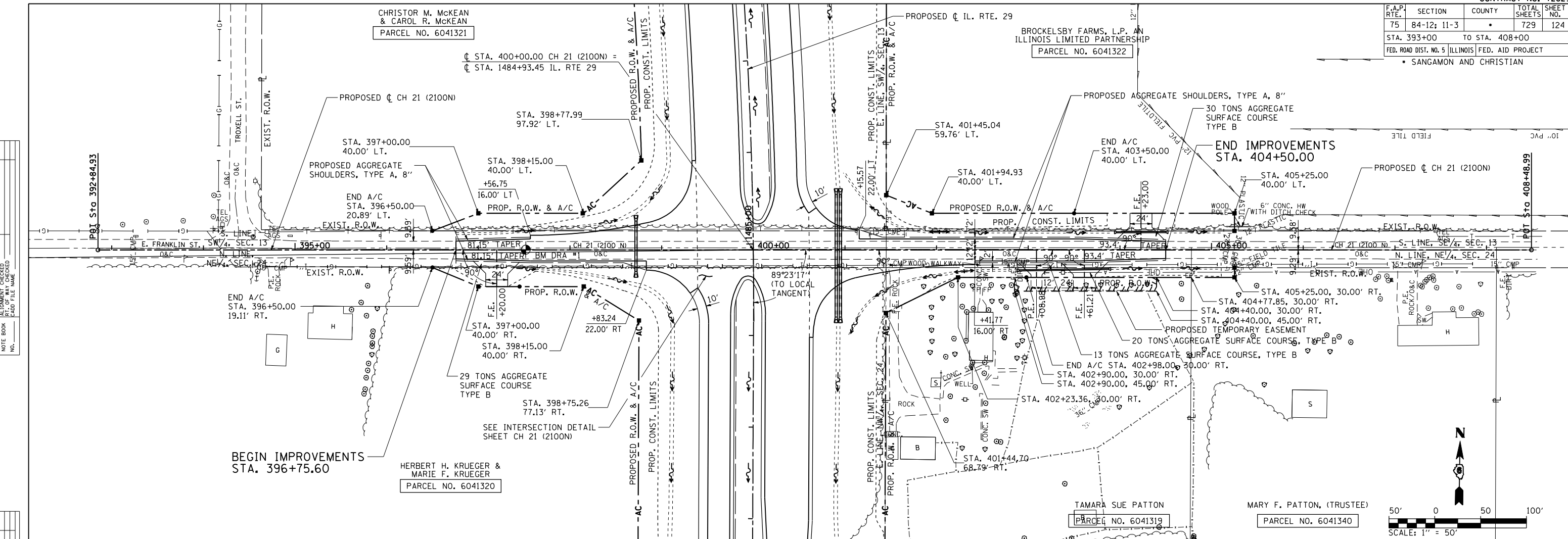


F.A.P. RTE.	SECTION	COUNTY	TOTAL SHEETS	SHEET NO.
75	84-12: 11-3	•	729	124
STA. 393+00 TO STA. 408+00		FED. ROAD DIST. NO. 5 ILLINOIS FED. AID PROJECT		
• SANGAMON AND CHRISTIAN				

PLAN	DATE
SURVEYED	
PLOTTED	
CHECKED	
BY	
NO.	

PROFILE	DATE
SURVEYED	
PLOTTED	
CHECKED	
BY	
NO.	



PLAN & PROFILE: CH 21 (2100N) - STA. 393+00 TO STA. 408+00

P:\P\04\5hts035
 L:\DOT\0306600\Draw\Sheet.s\0672829-sht-PlanProfile.sht.dgn
 3/16/2012