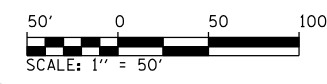


F.A.P. RTE.	SECTION	COUNTY	TOTAL SHEETS	SHEET NO.
75	84-12: 11-3		729	128

STA. 577+00 TO STA. 592+50
 FED. ROAD DIST. NO. 5 (ILLINOIS) FED. AID PROJECT
 • SANGAMON AND CHRISTIAN

PROP. TR 88 CURVE-1 DATA
 PI STA. = 580+28.03
 $\Delta = 1^\circ 06' 22''$ (LT)
 $D = 0^\circ 07' 53''$
 $R = 43,591.02'$
 $T = 420.78'$
 $L = 841.53'$
 $E = 2.03'$
 $e = N/A$
 $T.R. = N/A$
 $S.E. RUN = N/A$
 $P.C. STA. = 576+07.25$
 $P.T. STA. = 584+48.78$

PROP. TR 88 CURVE-2 DATA
 PI STA. = 591+17.63
 $\Delta = 67^\circ 50' 23''$ (RT)
 $D = 7^\circ 35' 35''$
 $R = 754.59'$
 $T = 507.45'$
 $L = 893.46'$
 $E = 154.75'$
 $e = 4.0\%$
 $T.R. = 48.75'$
 $S.E. RUN = 130.00'$
 $P.C. STA. = 586+10.18$
 $P.T. STA. = 595+03.64$

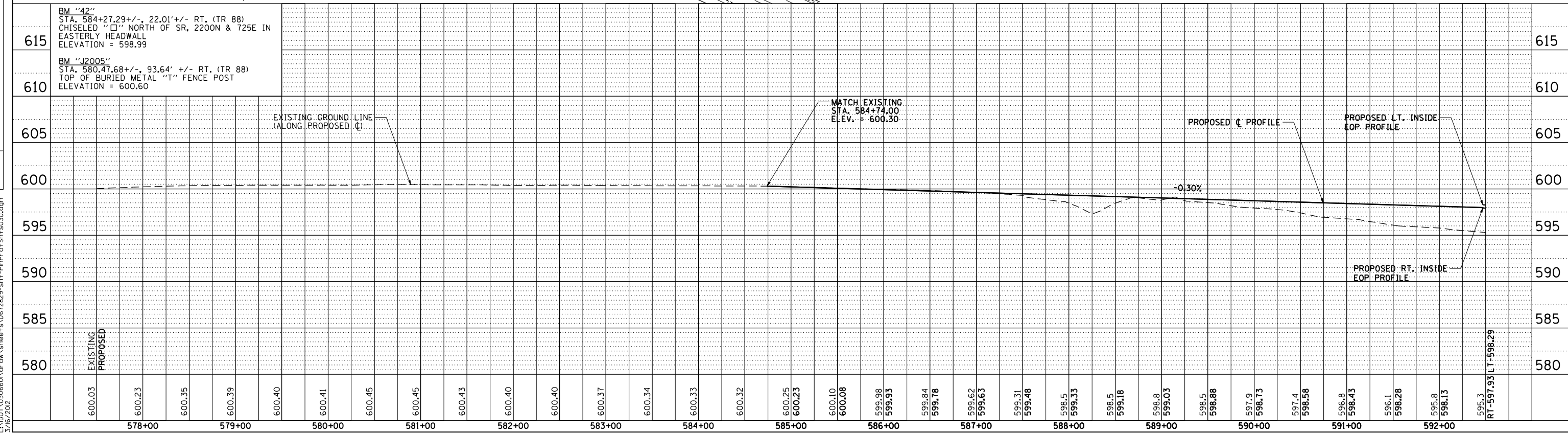
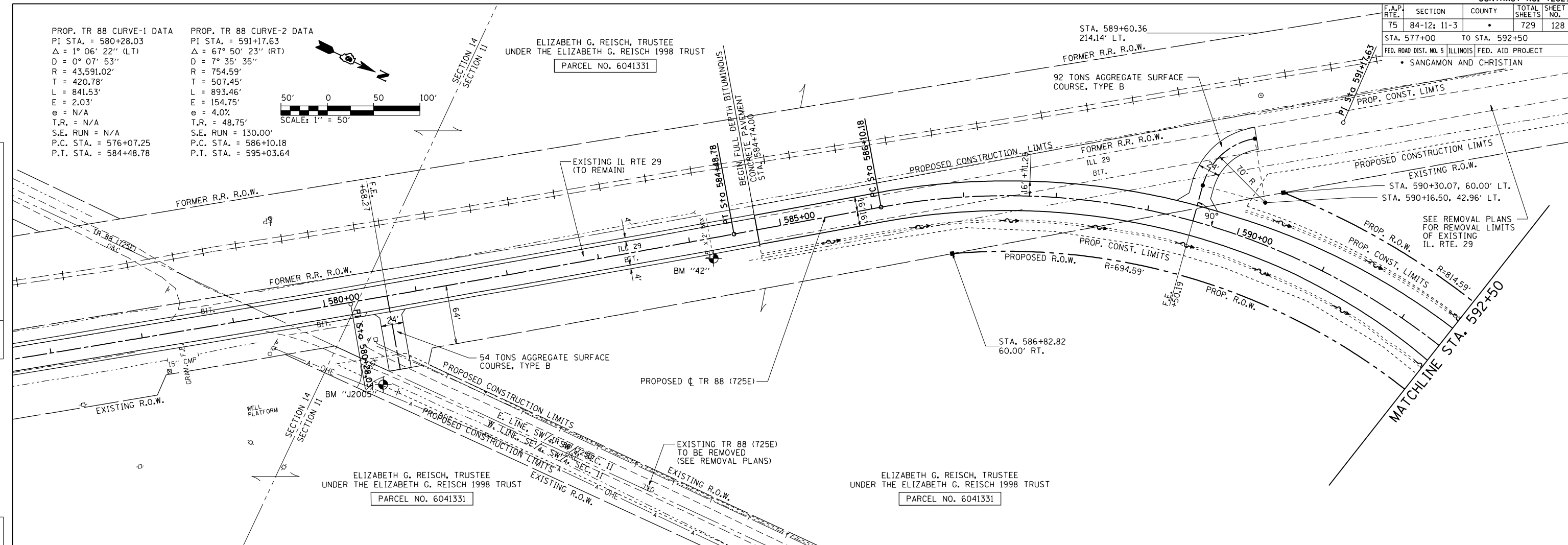


DATE	BY

PLAN
 SURVEYED
 PLOTTED
 CHECKED
 RT. OF WAY CHECKED
 NO. _____
 NO. _____
 NO. _____

DATE	BY

PROFILE
 SURVEYED
 PLOTTED
 CHECKED
 B.M. NOTED
 STRUCTURE NOTATIONS CHKD
 NO. _____
 NO. _____
 NO. _____



PinPror5hts039
 L:\N001\0306601.dwg sheet.s.d672829-sht-PinPror5hts030.dgn
 3/16/2012