

F.A.P. RTE.	SECTION	COUNTY	TOTAL SHEETS	SHEET NO.
75	84-12-11-3		729	132

STA. 94+50 TO STA. 109+50
FED. ROAD DIST. NO. 5 ILLINOIS FED. AID PROJECT
SANGAMON AND CHRISTIAN

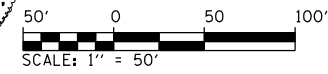
PROP. C TR74-63S CURVE-1 DATA
 PI STA. = 97+86.67
 $\Delta = 52^\circ 56' 18''$ (LT)
 $D = 18^\circ 22' 59''$
 $R = 311.68'$
 $T = 155.19'$
 $L = 287.98'$
 $E = 36.50'$
 $e = N/C$
 $T.R. = N.A.$
 $S.E. RUN = N.A.$
 $P.C. STA. = 96+31.48$
 $P.T. STA. = 99+19.46$

PROP. C TR74-63S CURVE-1 DATA
 PI STA. = 105+91.82
 $\Delta = 37^\circ 38' 22''$ (LT)
 $D = 18^\circ 22' 59''$
 $R = 311.68'$
 $T = 106.22'$
 $L = 204.75'$
 $E = 17.60'$
 $e = N/C$
 $T.R. = N.A.$
 $S.E. RUN = N.A.$
 $P.C. STA. = 104+85.49$
 $P.T. STA. = 106+90.24$

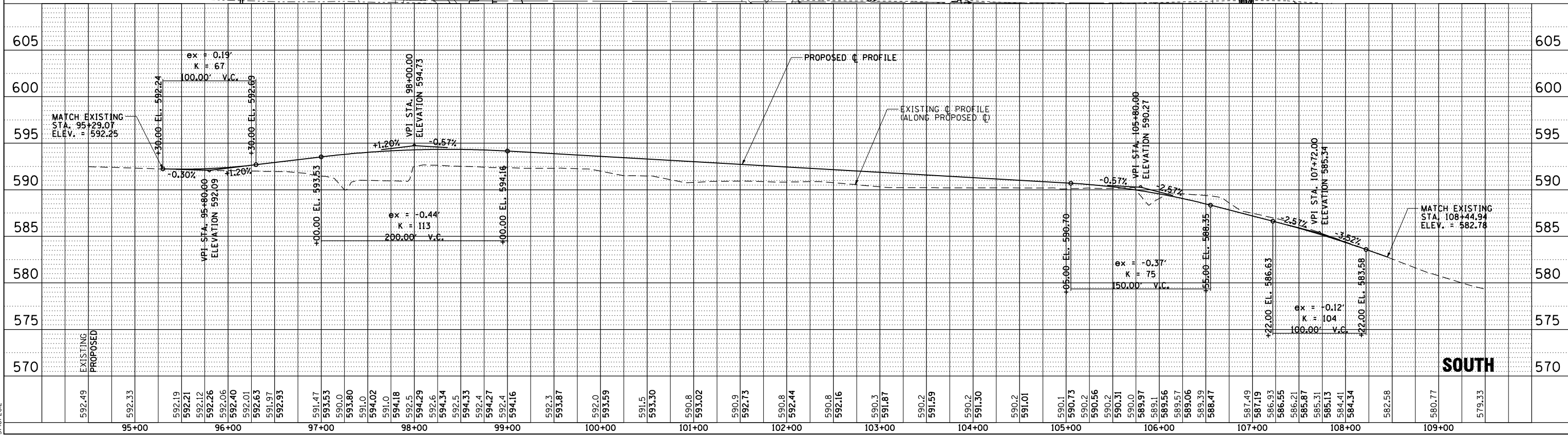
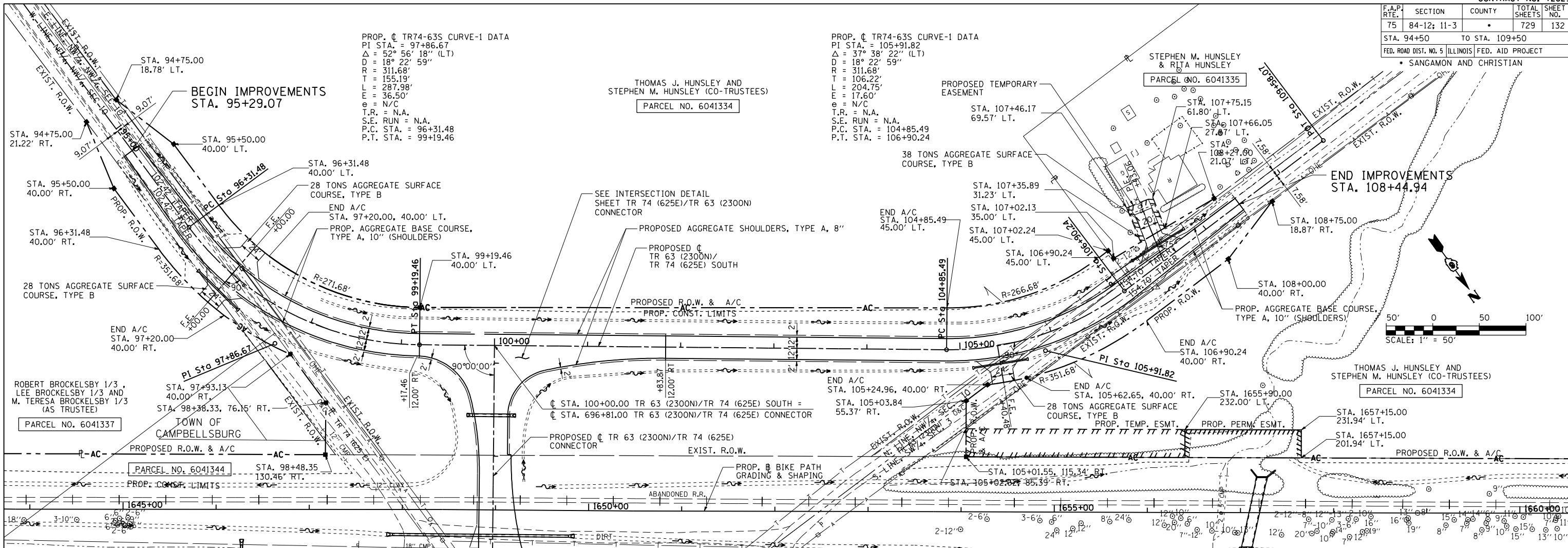
THOMAS J. HUNSLEY AND
 STEPHEN M. HUNSLEY (CO-TRUSTEES)
 PARCEL NO. 6041334

STEPHEN M. HUNSLEY
 & RIJA HUNSLEY
 PARCEL NO. 6041335

END IMPROVEMENTS
 STA. 108+44.94



THOMAS J. HUNSLEY AND
 STEPHEN M. HUNSLEY (CO-TRUSTEES)
 PARCEL NO. 6041334



PLAN

DATE	BY	REVISION

DATE: _____ BY: _____

REVISIONS:

NO.	DESCRIPTION

PROFILE

DATE	BY	REVISION

DATE: _____ BY: _____

REVISIONS:

NO.	DESCRIPTION

PinProrofShts045
 L:\DOT\0306001\dr-aw\sheet.s\672829-sht-PinProrofShts030.dgn
 3/16/2012