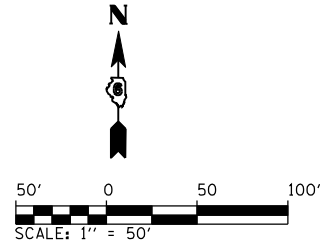
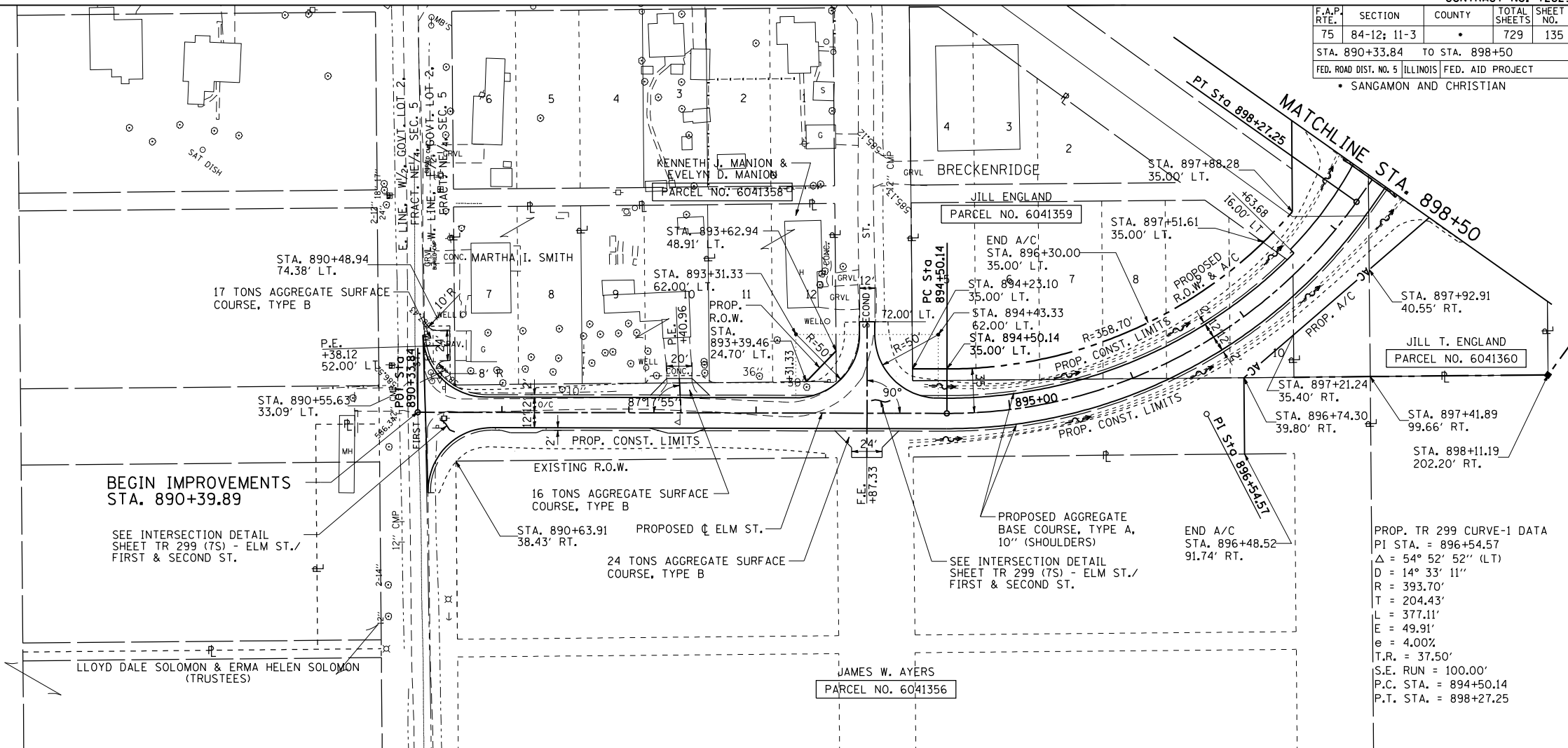


F.A.P. RTE.	SECTION	COUNTY	TOTAL SHEETS	SHEET NO.
75	84-12: 11-3	•	729	135
STA. 890+33.84 TO STA. 898+50				
FED. ROAD DIST. NO. 5 [ILLINOIS] FED. AID PROJECT				
• SANGAMON AND CHRISTIAN				

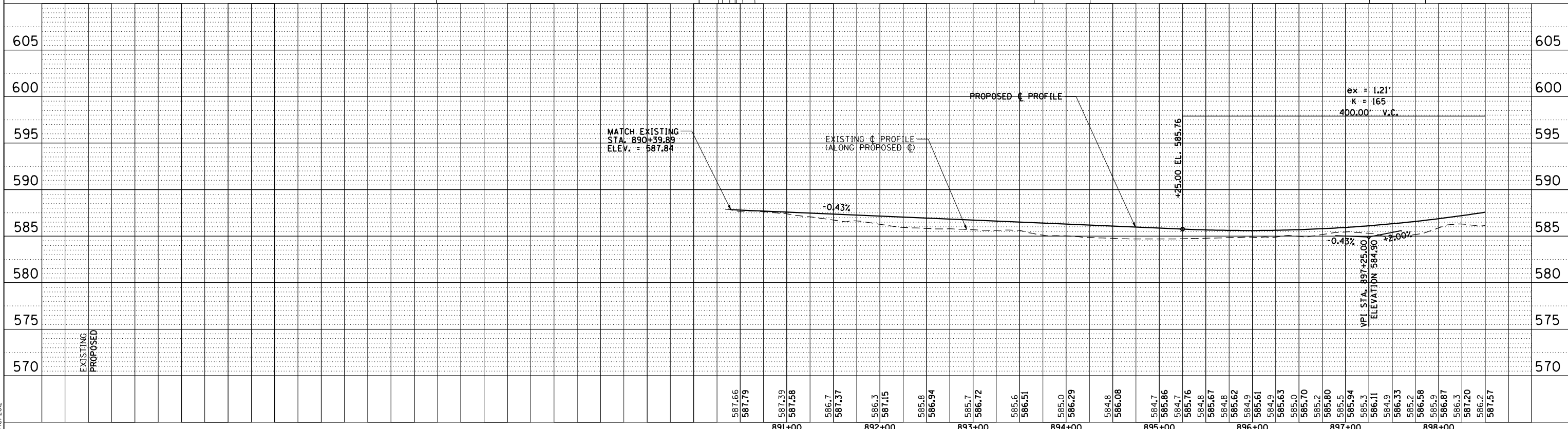


PLAN	SURVEYED	BY	DATE
	PLOTTED		
	CHECKED		
	BY		
	NO. OF WAY CHECKED		
	NO.		

PROFILE	SURVEYED	BY	DATE
	PLOTTED		
	CHECKED		
	BY		
	NO. OF STRUCTURE NOTATIONS CHKD		
	NO.		



PROP. TR 299 CURVE-1 DATA
 PI STA. = 896+54.57
 $\Delta = 54^\circ 52' 52''$ (LT)
 $D = 14^\circ 33' 11''$
 $R = 393.70'$
 $T = 204.43'$
 $L = 377.11'$
 $E = 49.91'$
 $e = 4.00\%$
 $T.R. = 37.50'$
 $S.E. RUN = 100.00'$
 $P.C. STA. = 894+50.14$
 $P.T. STA. = 898+27.25$



PinProf5hts048
 L:\DOT\0306001\draw\sheet.s\d672829-sht-PinProf5hts030.dgn
 3/16/2012