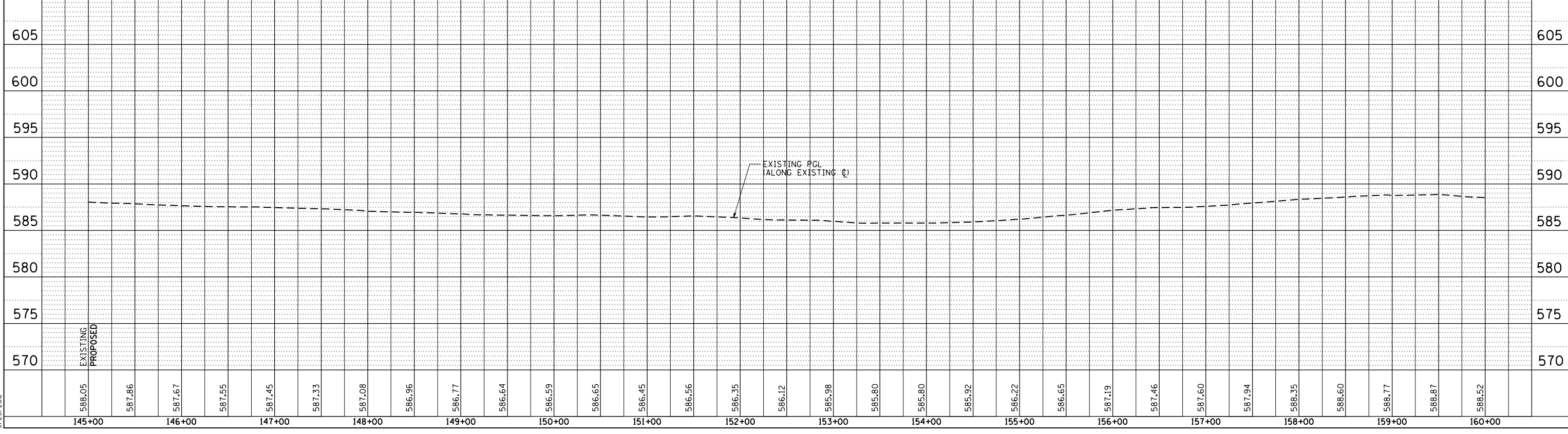
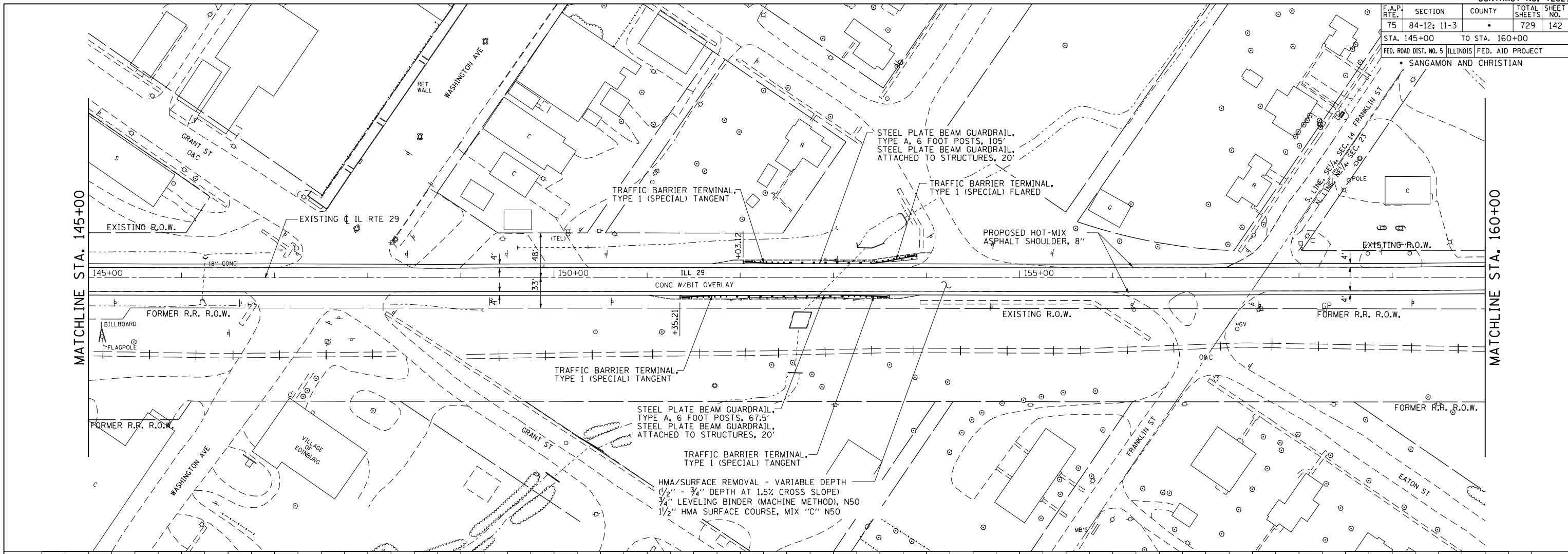


F.A.P. RTE.	SECTION	COUNTY	TOTAL SHEETS	SHEET NO.
75	84-12: 11-3		729	142
STA. 145+00		TO STA. 160+00		
FED. ROAD DIST. NO. 5 ILLINOIS FED. AID PROJECT				
• SANGAMON AND CHRISTIAN				

PLAN	SURVEYED	BY	DATE
NOTED	PLOTTED		
CHECKED	CHECKED		
NO.	NO.		

PROFILE	SURVEYED	BY	DATE
NOTED	PLOTTED		
CHECKED	CHECKED		
NO.	NO.		

PinProf5hts068
 L:\DOT\0306001\draw\sheet.s\672829-sht-PinProf5hts030.dgn
 3/23/2012



PLAN & PROFILE: EXISTING IL RTE 29 - STA. 145+00 TO STA. 160+00