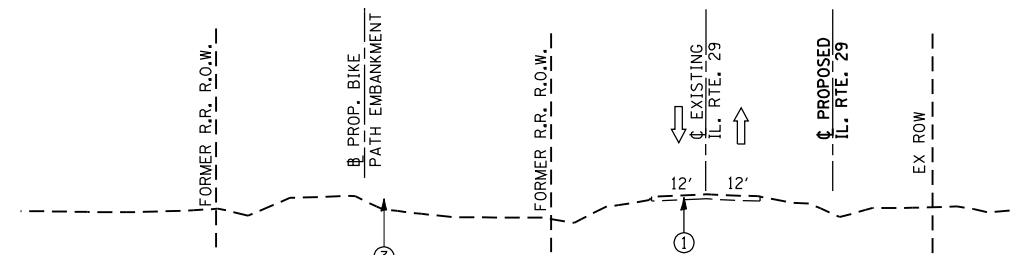
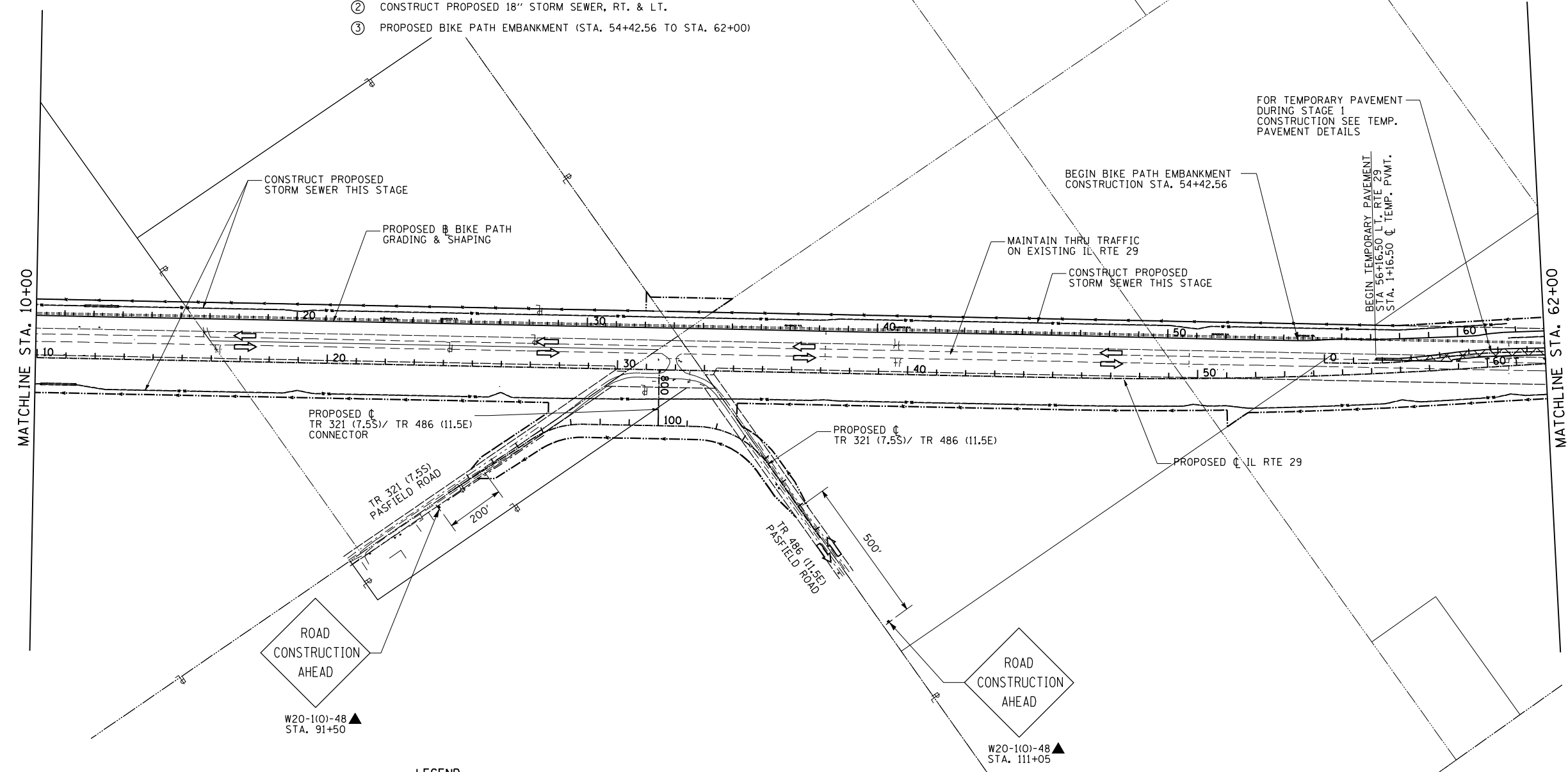
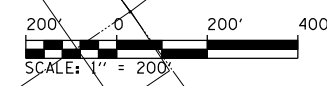


F.A. RTE.	SECTION	COUNTY	TOTAL SHEETS	SHEET NO.
75	84-12; 11-3	•	729	160
STA. 10+00		TO STA. 62+00		
FED. ROAD DIST. NO. 5 ILLINOIS FED. AID PROJECT				
• SANGAMON AND CHRISTIAN				



- ① MAINTAIN NORTHBOUND & SOUTHBOUND TRAFFIC ON EXISTING LANES
- ② CONSTRUCT PROPOSED 18" STORM SEWER, RT. & LT.
- ③ PROPOSED BIKE PATH EMBANKMENT (STA. 54+42.56 TO STA. 62+00)



**LEGEND**

- DIRECTION OF TRAFFIC FLOW
- WORK ZONE (STAGE AS SPECIFIED)
- TEMPORARY PAVEMENT
- WORK ZONE EARTHWORK AND DRAINAGE ACTIVITIES ONLY (STAGE AS SPECIFIED)
- COMPLETED STAGE
- TYPE III BARRICADE
- SIGN PANEL/BARRICADE ASSEMBLY (INCLUDED IN THE COST FOR TRAFFIC CONTROL & PROTECTION (SPECIAL), LUMP SUM)
- DRUM WITH STEADY BURNING MONODIRECTIONAL LIGHT
- CONSTRUCTION SIGN
- VERTICAL PANEL

REVISIONS	
NAME	DATE

ILLINOIS DEPARTMENT OF TRANSPORTATION  
**CONSTRUCTION STAGING PLAN  
 STAGE 1  
 ILLINOIS RTE. 29**  
 SCALE: 1" = 200'  
 DATE: 03/06/2012  
 DRAWN BY: R.A.H.  
 CHECKED BY: J.M.M.

Sheet#006  
 L:\DOT\030601\Draw\Sheets\030601.dwg  
 sheets\030601\Draw\Sheets\030601.dwg  
 snt-ConsFig\_AllSheets.dgn  
 3/6/2012